

ANNUAL REPORT 2023

TABLE OF CONTENTS

REPORTS

LEAD PASTOR.....	3
ELDERS.....	4
DIRECTOR OF OPERATIONS.....	5
DEACONS.....	6
PASTOR OF MINISTRIES.....	7
CHILDREN'S MINISTRY.....	12
COMMUNITY & WOMEN'S MINISTRIES.....	15
KITCHEN.....	25
MISSIONS.....	26
YOUTH & YOUNG ADULTS.....	29

APPENDICES

FAMILY LIFE.....	33
LEADERSHIP TEAM (AS OF DEC 2023).....	34
2023 AGM MINUTES.....	35

FINANCIALS

TREASURER REPORT.....	42
FINANCIAL STATEMENTS.....	44
2024 BUDGET.....	60

REPORTS

LEAD PASTOR

Submitted by Dr. Paul Brushaber



Dear Bethany family,

Another year has past, and God has been good. For the first time in many years, our discussion here has nothing to do with COVID - although I did just write the word...sorry. We are back to normal and moving forward. By every objective standard, we had a great 2023. Our church grew about 35% as we moved from just over 300 to just over 400 in weekend attendance. We are now running much higher than that on most Sundays. Our online presence and expanding influence are encouraging in an increasingly secular world with an increasingly wayward church culture. Numbers represent lives that we influence, people that need Jesus, and people that we help to grow in their faith. And these people are showing up at other ministries as well, from Tuesday and Thursday mornings to Friday family nights.

With the significant growth, we have experienced a lot of change as well, much of it very exciting. We hit our offering target for the first time in many years, allowing us to move forward with confidence as we hire more staff, expand missions funding, and continue the renovation of our facilities. Speaking of renovations, we renovated the basement into a very useable and inviting youth space, creating a great long-term spot for teens. We also moved to a new funding model for missions, guaranteeing 15% of our General Fund target go to missions from every dollar given. We are in a very healthy place financially. Our staff continued to grow as we added Rachael (children), Will (youth and young adults), Jen (women), and Kelly (food services). Mary has moved to Care and Community as we enter 2024, leaving us almost fully staffed. We will be replacing Lorne as soon as possible, and Louise Prefontaine when she retires in July. I am excited about the team we have assembled, and believe the future is bright.

The coming year should be a little quieter on the change front, but ambitious on the growth front. While we have added many people to our congregation, we are still a little behind in connecting them. Connecting groups will be a 2024 emphasis. We will also try to get a broader understanding of the entirety of our future building renovations, a significant but needed step for financial planning purposes. We want to create a church for the next 30 years...that is every generation's role, and the building is part of it. And we will try to grow 10% in every area of ministry, including weekends, which is our stated goal in the strategic plan that is overseen by the elders.

Bethany, like any church, is a unique and special place. While there are things that have needed change and adaptation to be more effective, there are things in the culture that one would never want to see changed or diluted in any way. One of those is the level of commitment and involvement by the elders. I have never seen anything like it anywhere in my experience. We have a great working dynamic between the elders and the staff. They are constantly involved in people's lives, available to answer my questions, and wanting to lead toward a better future for Bethany. They have been one of the best surprises for me here at Bethany. Thanks, men!

Thanks to all of you who volunteer and serve out of the goodness of your hearts and your love for Jesus and others around you. Thank you, DeDe, for making it possible for us to be in another country while your children and grandchildren are in the USA.

ELDERS

Submitted by Aaron Mackie, Chair



As believers, we all yearn to be a part of something that can only be explained by the hand of God. We furthermore enjoy the blessing of unity in Christ as we see God work in His church. Over this past year, Bethany has seen exceptional growth across multiple domains. In addition to the clear growth in numbers, we have witnessed growth in children attending Sunday School, Awana, and Youth, growth in prayer, and growth in ministries, to name a few.

Our ministry team grew in 2023, with the addition of Rachael Stewart as our Children's Ministry Coordinator, Will Moran as our Youth Pastor, and Jen Brum as our Coordinator of Women's Ministries. All three of these gifted individuals have brought fresh energy and excitement to the team, with expanded opportunities to minister to the people of Bethany. Additionally, Mary Dyck moved to overseeing Pastoral Care, a role that God has clearly gifted her for. Kelly Poirier joined the team as the Kitchen Coordinator and has helped to support many ministries that rely on an organized and smooth-functioning kitchen.

The Elders grew with the addition of Jay Somers, and his presence has been such a blessing to the group. Jay, along with his wife Julie, have quickly become very active in visitations to the sick. As a group, the Elders also chose to avail themselves on a weekly basis for prayer for healing and anointing at the conclusion of each Sunday service, a four-fold increase from the previous monthly pattern. This has given us greater opportunities to pray for our congregation, and to meet with people during their time of need.

Our worship teams also grew significantly over the past year, with the addition of many new volunteer musicians. Bethany is blessed to have a music worship ministry that is composed entirely of a volunteer team of musicians. Most of the new musicians that joined in the last year are in their teens or twenties, giving us a glimpse of the next generation of worship leaders!

Over the past year, we have also enjoyed a growth in relationship among the Deacons and Elders. We have forged opportunities for greater interaction both formally and informally, with regular joint meetings, improved communication among leadership, and collaborative work on budgeting and policy. We continue to operate under an elder-led governance model as laid out in our constitution, and continue to trust in God's Word, upon which our constitution and policies are based.

We look ahead to 2024 with eager anticipation, humbly seeking God's will and guidance, and rejoicing as we see His hand at work in our lives and the life of Bethany.

DIRECTOR OF OPERATIONS

Submitted by Lorne MacDonald



2023 was anything but uneventful as the year commenced with the infamous data breach and the restoration of seven months of records and documents. Greatest lesson learned is to ensure that data back-ups are frequent and successful. Grateful thanks to all those involved in restoring the lost data whilst maintaining the day-to-day operations of the church, particularly Louise Prefontaine. A special thanks as well to Sheila Jepps for her volunteer work during this difficult time.

Another lesson learned had us install a satellite on the roof, combined with our old Telus infrastructure, to give us sufficient bandwidth to back-up our data while we await the trenching of high-speed internet into the building (scheduled Spring of 2024). In addition to the high-speed internet, we are getting new phones, as our current handsets are circa 1988. They have given us good service over the years however it is time to join the twenty-first century.

2023 also saw the replacement of the Foyer Doors. Years of heavy usage and extreme weather took its toll on the doors and frames. The basement classrooms have been transitioned to a large Youth Room which is greatly appreciated by the Youth and is seeing frequent use. The transition of that space is remarkable, and if you haven't visited it, I encourage you to do so.

Computer hardware has been updated as the old hardware has long passed its best before date.

DEACONS

Submitted by Andrew McCausland, Chair



There is a lot to celebrate at Bethany Chapel for 2023. God is working through our church and making an impact in the lives of people in the local community, around our city, and even in various places around the world through our missions support. Attendance grew more than 35% year-over-year in 2023, accelerating the trajectory seen in 2022. Capital improvements were completed and other renovation projects are in the planning stages in response to the need to renew our building and to accommodate our growing congregation. We modernized our I.T. systems to better serve church needs, with the final piece of this project set for completion in the first half of 2024. A renewed focus on missions, highlighted by a leadership trip to Thailand to build stronger relationships with our Kingdom Friendship initiative, resulted in exciting missions trip plans and more predictable missions funding. Missions funding is now set at 15% of contributions and any unspent funds out of this amount are carried over to subsequent years.

Within our elder-led governance model, detailed by the Bethany Chapel constitution, we seized the opportunity to further improve collaboration among the deacons, elders, and staff leadership. As a result, we have regular quarterly scheduled joint elder and deacon meetings in addition to the regular monthly meetings. We have jointly identified and started an initiative to renew and rationalize Bethany Chapel's organizational policies to better align with the constitution and to improve communication. We plan to accelerate this effort in 2024 to ensure a solid foundation of clear, consistent, and God-honoring governance.

We expect 2024 will bring continued growth, and that will require us to navigate challenges and opportunities different from what we've seen in recent years. The 2024 budget reflects what we as deacons, elders, and staff agree is necessary to both meet the needs of our church in 2024 and to set a solid foundation for the future. Some highlights of the 2024 budget include increased staff spending to better serve their needs, increases in ministry spending to account for growth in attendance, and increased capital contributions to allow for planned improvements in addition to asset replacement as our building ages.

We are so grateful to be blessed with staff that have the enthusiasm, talent, and energy to take on special projects in addition to the regular demands of their roles. We also want to recognize the important contributions of our many volunteers who make the vibrant programs in our church possible.



PASTOR OF MINISTRIES

Submitted by Brennan Dyck



2023 was an incredibly busy year at Bethany Chapel, and I wanted to take a second to thank each one of our volunteers for the multitude ways they have supported our ministries. Each volunteer blesses our programs, our people, and contributes to the Kingdom, so thank you!

Our ministries saw a tremendous amount of change this past year as Bethany continued to grow. In 2023, we went through several job searches. We were blessed to bring on board Rachael Stewart as our full-time Children's Coordinator, William Moran as our full-time Youth Pastor, Kelley Poirier as our Kitchen Coordinator, and as the year came to a close, Jen Brum as our Woman's Coordinator. This meant we were able to begin transitioning Mary Dyck into her new role as our Director of Care & Community. One of my strongest beliefs in ministry is the need to put people in a position they are passionate about and can succeed in. With our ministry staff settled, I believe we are now moving into a different stage as a staff - one where we can support the congregation and each other. As we enter 2024, I am thrilled with our team, I know God has amazing plans in store in the years ahead.

To those who are new to our congregation, or those who have taken a break from serving, I would extend an invitation to serve in the coming year. The backbone of any church is those who serve in it, and with our ministries growing, we need support more than ever before. We are all part of one community and we need each other to give back and commit our time and talents to further the Kingdom.



There is one body, but it has many parts. But all its many parts make up one body.

- 1 Corinthians 12:12



Here are some additional highlights from a busy year of ministry.

Pastoral Care

A highlight of this past year was walking four different couples through premarital counselling and another three couples through their wedding day. It was a wonderful opportunity to spend time with so many Bethany families and congregants. We also supported a dozen families through memorial services. I was also able to sit down and connect with dozens of Bethany attendees and refer many to counsellors, supporting many of these individuals through our Care Fund. Our prayer newsletter continues to highlight those in our church community who are struggling and allows our church community to support them in both spiritual and practical ways.



As Mary Dyck takes over much of our care ministries, I want to thank her for her passion and support. Mary was instrumental in assisting me with so many of our congregation and I know she will make a significant impact in this area of ministry in the coming years.

Connecting Ministry

As our church continues amid many transitions, our Connecting Group ministry has been impacted. Several long-running groups are no longer meeting and we have a large need for new group leaders. Despite these struggles, we were able to connect nearly 34 different individuals to existing connecting groups and are so thankful for those who open their homes and provide a wonderful opportunity for relationship development and biblical discipleship.

Missions

While the Missions Committee will provide a larger update with our missionaries, I wanted to share that we have been busy working through plans to send our Grade 12 youth on a trip to Thailand this spring. This is being done in partnership with Wycliffe Canada & Wycliffe Thailand, and we are excited to continue working with Pastor Wat and his team overseas. While this will be a smaller-scale trip, we continue to put plans in place for a larger youth missions strategy that will support youth discipleship and our growing youth ministry. This work is being done in conjunction with the Missions Committee and Will Moran. Thank you to Lyle Simpson, Chelsea Thiessen, Tom Ramsay, Bruce Raddatz, Kirstyn Mackie, and Gerald Grasmeyer (Deacon liaison), for all their work on this committee.



*Go, therefore,
and make disciples
of all nations...*
- Matthew 28:19



Men's Ministry

It's been a blessing to be involved with the Men's Ministry and support them in the Men's Breakfasts. We have seen some wonderful growth at our Men's Breakfasts with 60+ men regularly showing up on Saturday mornings to encourage, challenge, and grow with one another. A huge shout out to Jay Somers for his tireless commitment to seeing these breakfasts happen, as well as David Macphail, Tom Ramsay, Fred Schuman, & Steve Simpson.

Our Men's Discipleship Group also continues to meet faithfully every Thursday morning for a time of prayer, study, and discussion. Thanks to Fred Schuman and Gary Baradoy for heading up this group.



Technology & Communications

As a staff, we have been hard at work in 2023 behind the scenes to improve many aspects of our ministries and the way we communicate with our congregation. We began this work in the spring by starting to replace or update much of our technology in the building and by making plans to bring in high-speed. We've continued this work by planning for a new website and several new communication pieces based on feedback that we have heard. Many of these changes take considerable time to plan and execute and we are excited to share this work in the coming months. A special thanks to Lisa Hicks who has been instrumental in helping much of this work come to fruition.

Sound & Multimedia Teams

Our Sound and Multimedia teams continue to support Sunday Service and our ministries overall in a massive behind-the-scenes capacity. Without this tireless group of volunteers ensuring our service runs smoothly both in-person and online Sunday mornings, helping respond to technical issues, preparing slides or supporting ministry events, we would lose much of what makes everything come together. Thank you to Peter Menzes, Dave D'Amico, Carmen Dool, Alvin Tan, & Bob Clarke for their efforts in this area.

Seniors' Ministry

We held four Senior Socials this past year, each of which was extremely well attended. We have individuals that come in from all over the city, including from Chartwell Royal Park, right beside us. It is wonderful to be able to welcome many who might not attend church otherwise. I know from a pastoral point of view, we always enjoy participating or sharing at these events. A big thank you to Wendy Pelletier and Kerry Davidson for their work in this ministry area, as well as the many faithful volunteers who help with registrations, check-in, set-up, music, and clean-up each event. We are grateful for your dedication in creating such a welcoming and warm environment.



**Legacy
Grandparenting Summit:**
"Helping to Build
a Spiritual Legacy"

Grandparenting Ministry

Our Grandparenting Ministry continued to thrive in 2023 under the direction of DeDe Brushaber. DeDe manages our Grandparenting email for Bethany, recruits volunteers, liaises with the Legacy Coalition Legacy Board, and leads a group of six grandmas that pray together for an hour each Friday morning for the mission field of the grandchildren of the world.

We are thankful for some new volunteers this past year who helped facilitate *Equipping Intentional Grandparents* classes - Margaret Blackburn, Mel Dow, and Steve and Vicky Simpson.

Throughout the summer, a number of Bethany grandparents were blessed through the GrandCamps that Legacy Coalition offers. Camps were hosted across Canada, allowing for various opportunities for connection with grandchildren around the country.

For the third year running, we also held a simulcast of the Legacy Grandparenting Summit at Bethany. This two-day event was well-attended and featured world-renowned speakers such as Tony Evans, Ann E. Gillies, and Michael Singletary. We also helped three other churches in the area host, leading to Alberta being host to six of the 11 sites across Canada. Many thanks to Meg Thoutenhoofd for her leadership in running the summit this year.



Legacy Grandparenting Summit 2023

SIMULCAST LEGACY GRANDPARENTING SUMMIT 2023

October 20-21, 2023
9:00 am - 4:30 pm
Bethany Chapel

2 days of inspiration from world-renowned speakers, including:

- Tony Evans**
Senior Pastor,
Oak Cliff Bible Fellowship
- Ann E. Gillies**
Author & Founder of
Restoring the Mosaic
- Michael Singletary**
Speaker &
Former NFL Athlete

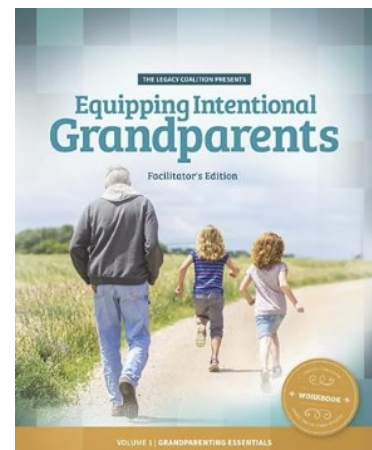
...and more!

Cost

- Use Promo Code **CANADA23** to receive 25% off all rates
- Early Bird rate of \$49 USD until Sept 18
- \$59 USD Sept 19-Oct 19
- \$69 USD at the door
- Visit Bethany's website below for more info and to register

Act now to avoid paying more!

BETHANY chapel bethanychapel.com/grandparenting-summit-2023



Plan-to-Protect

We began training all our staff, and volunteers, across our Awana, Kids, Youth & Seniors ministries this past year. We have seen a tremendous response to this training and are evaluating additional ways to support our volunteers and provide them with materials on a more consistent basis. This past year, we had 187 volunteers complete our Plan-to-Protect training.

In Closing

God is at work here at Bethany, with many ministries growing and new families routinely walking through our doors. We continue to see many transitions in our volunteers, those participating in our programs, and our staff. Thank you to those who are supporting us in this difficult work and for your patience as we come up short.

All the Glory to God



...to Him be glory in the church and in Christ Jesus throughout all generations, for ever and ever! Amen.

- Ephesians 3:21



CHILDREN'S MINISTRY

Submitted by Rachael Stewart

Bethany Kids saw some incredible growth over the last year. Age groups that were combined at the beginning of the year, such as the Grades 1-4, as well as the 4 and 5 year-olds, outgrew the combined spaces, so we set up new classrooms better suited for larger numbers. With the growth in children, the need for additional volunteers also grew. We were thankful for 19 new volunteers who stepped forward to help with our growing classrooms. Two of these volunteers are willing and able to teach, giving me the flexibility to float between classrooms.

The closure of our preschool also allowed us to move our Bethany Kids preschool group to that wing. These classrooms are larger and much brighter after being in the basement. They are also closer to an exit without stairs in case of an emergency. With this move, we invested in two extra large carpets to aid with circle time. One carpet has a circle of sheep and the other has the Bible ABCs around the border, which helps get children sitting and ready to listen much faster as they can see exactly where they will sit.

When I started as the Children's Ministry Coordinator, there was a four-week rotation for Sunday School volunteers. This left us scrambling to find a team when there were five Sundays in a month. I asked some keen volunteers and spares to step in for when we have this extra week, and now it is far less stressful when the fifth Sunday rolls around as there is a schedule in place.





Easter was the first big holiday I was leading the Kids Ministry for, and we had so much fun with the 86 children who were in attendance. We had

a separate egg hunt and lesson for the preschool, grades 1-4 and BLAST students. The preschool children had their egg hunt in the backyard then went to the classrooms for their lessons, while the grades 1-4 had the lesson first then the egg hunt. After the BLAST students finished their lesson, they got a special church-wide scavenger hunt that included finding hints on specific pages of the Bible, word searches, anagrams and much more. As for the egg hunts, we decided to invest in reusable plastic eggs with crosses on them as a visual to keep the focus on Christ. In addition to the usual chocolate and stickers, each age group got to find special eggs. The preschool students found mini bubble blowers and the grade school children found mini skateboards with Christian puns printed on them; such as “I roll with Jesus,” and “Move with the Spirit.”



In July, we held a drama camp that was facilitated by Fire Exit Theatre. Registration filled up so quickly that had to reach out to the theatre company to see if we could accept more children, and we were able! Over 30 young people participated in a five-day camp. The kids learned about the story of Job and pulled off three performances of the story – one as a musical, one a dramatic mystery, and the other, a comedy. It was a lot of fun and many families enjoyed the performances.



Christmas was a joyful time for Bethany Kids. We made some seasonal crafts, including cinnamon stick cross ornaments. Christmas Eve we had 80 children in attendance. This year's Christmas play was lots of fun for everyone involved. We kept it low-key, with optional costumes and fewer rehearsals than last year as we wanted to ensure the kids weren't too stressed. “The Rehearsal Before Christmas Eve” is a play within a play, which allowed for some grace around errors and more opportunity for comedy. We also sang a song in French to recognize a few students who speak French at home and a song in German for the many grandparents who speak the language. I received feedback from several seniors who attended, saying this was the “best Christmas pageant” they had ever seen. Very thankful for all those who participated and volunteered this year.

We held four dodgeball tournaments for the grades 3-7 students in 2023. These have provided a great opportunity for the students to form friendships and invite those who don't attend a church.

Kenzy and I have enjoyed being creative with the bulletin boards this year. Some boards we decorate with a Bible verse and correlating visuals, but we recently started using them to communicate updates. Now in the preschool wing, as well as the grades 1-4 hallway, there is a bulletin board with important information, upcoming events and info about the Children's Ministry weekly emails. We have also added two boards, (one for each wing), displaying the current Bible story pictures.



Awana

We are incredibly grateful for the leadership of Kirstyn Mackie, Sarah Chung, Anhelia Buhler and Jamie Storsley, who are the backbone of the Awana Ministry. This year, to better support our Awana program and to have a ministry staff member on site, I have been assisting with check-ins and teaching, as needed. It's been great to see so many kids enjoying themselves and learning the Scriptures, in addition to what they learn at Bethany Kids Sunday mornings.

Operation Christmas Child

Thanks to the leadership of Nada and Robert Kusche again this past year, we were a drop-off site for Operation Christmas Child. We collected a total of 536 boxes in 2023, with 172 of them coming from Bethany members/attendees. Although our overall total was less than the previous year, Bethany's contribution was higher year-over-year by 15 boxes. We are grateful for Bethany Chapel's commitment to sharing God's message through Operation Christmas Child.



Sunday Morning Volunteers

I'm thankful for the number of new volunteers who have stepped forward this year in answer to our calls to serve and for all the volunteers' timeliness in responding to the scheduling for Sunday mornings. Thank you to our worship teams who lead us in songs of worship, and to our prayer teams for supporting our congregants with various needs through prayer. I look forward to continuing to work with you in 2024.

I'm excited to see how God continues to grow these ministries in 2024 and am honoured to be able to serve Him in this way.



COMMUNITY & WOMEN

Submitted by Mary Dyck

He has shown you what is good. And what does the Lord require of you? To act justly and to love mercy and to walk humbly with your God. Micah 6:8

It is time again to reflect on the year that was 2023. As I ponder all that was and all that we walked through, I have to wonder what the Lord has taught me in and through it all. Acts of God's unfailing faithfulness always come to mind. There is not anything that He has not known before, or ordained, or set in motion, or helped us journey through. He is always before us, behind us and encompasses us in everything we do. The words that come to mind for the past year were embrace, serve and team.

In 2022 we were encouraged to engage. Come to church, get involved, dig in. Join us in something new.

Looking back at 2023, we wanted to *embrace* the year; we were encouraged to *serve*, and it seemed as though it would be so much better to do it as a *team*. Psalm 100:2 tells us to, *Serve the Lord with gladness, and come into His presence with joyful songs*. After COVID, it was so nice that people had a yearning to meet together again. Be in close vicinity of each other again. Eat together. Learn to serve together again.

Building Team in Women's Ministry

At the beginning of 2023, we began **Women Together** meeting live and "in person." The ladies were excited to get back at it and study God's Word. One of the studies was, "Loving Like Jesus" – a 1 Corinthians 13 study that took them through the entire year. The other studies were "Women of the Old Testament" and "Questions God Asks". Each session, (May and December) was concluded with a great brunch that was very much enjoyed by all who were able to attend. At the end of May, we sadly bid farewell to Lynn Marston, who stepped down from chairing and also leading studies, for I believe it was, 16 years. I want to take the opportunity here to thank her for her diligent leadership, her dedication to her fellow team members, and for her care and concern for all the ladies that came to the studies over the years. She was organized and prepared every single week. It would be very difficult to replace her. We also had to say farewell to many of the group leaders - Jane Leslie, Michelle McCarthy (who led worship and led a study class), Darlene Forgues, and Connie Lappin. It is always difficult to lose amazing leaders and friends. We want to thank them all for their leadership and commitment for many years to Women Together Bible studies.

We were committed to keep Women Together going as it was such a viable ministry. So, with some new willing ladies, we gathered in the summer months to build a new ministry team to restart in September. Thank you to Carol Ann Kiriaka and Laura Nauta for beginning each morning with a wonderful worship time. We had enough leaders to offer four study groups and we had a group of ladies committed to putting the tea and coffee on each week. In no particular order, I



would like to thank Sheri Webb, Kerry Davidson, Laura Higgins, Val Andrusiak, Mariette Chuang, Shawntel Brooks, Jen Brum, Carol Ann Kiriaka, Denae Lappin, and Hope Collar for leading the studies each week. And we can't forget all the ladies that put on the coffee for us. We thank you Hope Collar, Laura Wickstrom and Jennifer Frank. There has been a really great response, with more ladies coming back or beginning the study for the first time in each session. We are so very grateful that we could build a new team and re-commit our Thursday mornings for God's glory. Our fall session went very well and we wrapped up that season with a Christmas Brunch in December. At that brunch, Jen Brum was introduced as the new Women's Ministry Coordinator.



The women have fun at the Christmas Brunch

We were eager to start **Tuesday Cheer** again and were encouraged by the number of registrants that came. We began each morning with refreshments and a "Thought for the Day." Our ELL (English Language Learning) class has been very well attended and they have great instructors that are totally committed to these students to help them learn and become more comfortable with the English language. Thank you Steve and Vicky Simpson, Sonja Douglas, Paul Thunberg, He-Leng Lam, Kathy Wood and Ferne Watson. They make the classes fun and keep the students engaged.

Sheryl Grasmeyer taught the Cardmaking class, Jacqueline Winter led the Sewing group and Pam Carvey led a new Art class this year. And thank you Kathy Wood, Tammy Peters and Lori Antpoebler for helping me get the refreshments out throughout the year. It was also wonderful to show The Chosen series for the first half of the year. We concluded each episode with a great Q and A time. I have been very encouraged by all our volunteers and all the attendees of the program. We have met so many new people this past year and we trust they too have enjoyed the program.



The cardmaking class



Steve instructing the ELL class



Tuesday mornings are busy at Bethany Chapel. We also offer a “**Tot Time**” class for parents with children from birth to kindergarten ages. Teja Dyck leads this class. She took over when Kendra Rendall finished in the summer months. On Tuesday mornings, they start in the gym where the kids can have a good play time while the moms engage with each other and are still able to see their kids. They then go off to the nursery area for story, craft and snack time. When it is warmer weather, they will go outside to a playground nearby, and in the summer months, try to meet at different parks. They have met new parents at the playgrounds and invite them to the program. They have a great attendance and have met many new parents with their young children in the past year.

Teja reports: “Our aim is to create a space that is welcoming to all, and to grow friendships and relationships through those connections while engaging our young children in age-appropriate activities and fostering social skills. We usually see between 8-12 parents per week, and around 15-20 children, with a core group of about 6 parents and caregivers that come most weeks, and many others who attend more sporadically.

We have seen a healthy level of engagement and interest, and at least one new family has started regularly attending Bethany on Sundays from their involvement with Tot Time. Bethany is well set up to host this type of group, and we receive many comments on how wonderful the space is. We see families coming from all over the city.

We have also seen the program facilitation grow from one volunteer leading all aspects to a more cooperative model. Since January, each family has had the opportunity to sign up to lead story, song, snack, or craft for the following week. This sense of co-leadership has been empowering for many of the regular families and makes the program more sustainable long-term. Tot Time has been a joy to run, and seeing the children grow through the program and new little faces enter each season is truly rewarding.”



This year, at the end of November, we concluded our Tuesday Cheer mornings with what has now become our annual **Christmas Market**. We drew about 30 vendors and we welcomed well over 100 visitors. It was a great morning. Our guests thoroughly enjoyed the variety of goods made available to them and our vendors were all very happy with the great response. Many of the vendors very generously donated their proceeds to our Care Fund. Our Community Pantry was quite low and needed replenishing. With the generous donations, we were able to make quite a large shop to fill our pantry in time for Christmas.



Last year's **Ladies' ReConnect** events always brought so much joy. In February, our theme was "**ReWrite**." We had a panel of ladies that shared their stories in various seasons of life. No matter the challenge, they shared how God was able to rewrite the trajectory of their lives and shape it into something far better than they could have hoped for. It being the Valentine's season, the ladies were given a vase and fresh flowers to arrange and take home to enjoy. In June, our theme was "**ReAlign**." Pam Carvey came to share how they could be leaders in any and every aspect or season of their lives. In October, we changed the theme a bit and our event was entitled, "**Fall on Your Knees**," – an evening devoted to the theme of prayer. We again invited a panel of ladies to speak about how God had met them in the various seasons of their lives. As a young mother, as a woman abiding in the everyday, as a mother having lost a young child, as a grandmother undergirding her family in prayer. It was a powerful evening. We challenged the ladies to create a "prayer journal" and to be more intentional in their prayer life.



*"The King will reply, "Truly I tell you, whatever you did for one of the least of these brothers and sisters of mine, you did for me."
- Matthew 25:40*

We invited ladies to join us for a movie event in November called **The War Room**. This was a great way to finish the year after the Prayer event in October. Each of these events were meant to encourage ladies to bring friends and neighbours. We prepared a craft or an activity as a takeaway, there was always great food to enjoy, and we hope that the ladies that attended felt welcome and were able to connect. I have thoroughly enjoyed working with the ladies on the Reconnect planning team. They are (and in no particular order): Chrissy Cossette, Alicia Cossette, Susie Rollings, Teja Dyck, Angela Spencer, Leah Lambert, Mer Yang, Vanessa Kordupel, Carey Abrey-Iliuani, Sheryl Grasmeyer, Kelly Hernandez Garcia, Rachael Stewart and Jen Brum. I am so very grateful for this team that helps put these events together with each of their amazing personalities and giftings. That time of planning and preparing has always been fun and a great blessing. The time with them has always been my cup filler. A time of true joy. Jen Brum has graciously stepped up as the new Women's Ministry leader. With such a great team to support her, I wish her all the best in this new ministry position.

Serving our Community/Neighbourhood

I really do love this work. I spend a lot of time here and in the surrounding community of Bethany. I love meeting new people and hearing their stories. We are called to be salt and light. We are called to be the hands and feet of Jesus. That means, go; get up and go and do. I meet a lot of people and I love the partnerships we have made with various organizations in the city. I am continually grateful for the wonderful partnership and financial support from the **I Can for Kids** and the **Brown Bagging** organizations. With the cost of food steadily increasing, I Can for Kids donated funds to the amount of \$22,500 in grocery gift cards for families, and Brown Bag donated funds to purchase the lunch supplements to the amount of \$12,050. We are currently serving 40 families and over 100 children from the generous donations from these organizations. I am grateful for Nada and Robert Kusche that volunteer to do the shopping every other Monday so we can compile the packages for the families. Thank you to Ken and Kathy Grandia, Sadhana Sah, Ann Sowiak and her daughters Karen and Kim for their help putting them together. It is a great blessing to serve together to give these families a "help up" with food security for their families.



Our **Community Pantry** continues to be a much-visited source of hope for some Bethany families, as well as the surrounding neighbourhood of Bethany. The price of groceries, as you know, continues to increase, and we constantly hear how grateful those accessing the pantry are for the help. Thank you to all that help keep the pantry stocked. God truly bless you for your generosity. The visits and encounters in that hallway are always a 2-fold blessing. And we have seen many check out our church programs from the welcome they have received. We also have received the occasional hamper from the Food Bank that often helps just the right person on that particular day.



Our **Good Food Box** program remains to be quite popular as food prices continue to increase. Bethany Chapel is a depot for Good Food Boxes. Approximately once a month, boxes of fresh produce are delivered to us for pick-up by those who have ordered a box. They contain both fruits and vegetables that are very reasonably priced. On average, we serve about 50 families each month through this ministry. These boxes are available to all people to access healthy food that they might not otherwise be able to afford. Orders are paid for in advance at the office and we facilitate the pick-up after delivery. Many thanks to our custodial team for set-up and take-down for the boxes, and to our office staff for all the admin. work. A great team effort!

Last March, we were able to again partner with some CPA Alberta accountants that graciously came out to prepare tax returns for low-income families at our **Tax Clinic**. We have been fortunate to have returning accountants that have come to know the clients that access the program. It is nice that trust and an understanding has been formed. It was again a great success with very grateful clients.

We love our **Lincoln Park Community**. The City of Calgary has given us a unit (#36) in the Lincoln Park area to use as a resource space to engage community families; to bring them out of isolation, make friends and to build trust. It's been a great year of reconnecting with many and meeting many new families in the community.

We meet about every other Wednesday as a "**Touch Base**" group. Refreshments are served and we either plan an educational topic to discuss or have an open conversation together. The ladies genuinely love to gather. They bring their children, some play independently, and the smaller ones are passed around and cuddled by all. Occasionally I partner with the community liaison, Pat Dube. The area property manager will pop by every now and then. They see this as an advantage to get to know some of the neighbourhood ladies in a more casual environment. A new partner has also joined us in Unit 36; **WINS** have also set up an office and are there two days a week. They have occasionally brought by store donations for the ladies to take as a gift.



In the summer months, we were again able to offer **Camp Sponsorship** to families that wanted to send their children to camp. Thank you to the Camp Okotoks Society for awarding us a grant that helped us sponsor 16 children to go to Salem Acres this summer. I know it is always a bit of a break for the parents and the kids really enjoy their camp experiences.

We also implemented a **Back to School Supplies** project this summer and asked the church to help donate school supplies for low-income families. Thank you again for all the generous donations! With the supplies that were donated, we put together **84 complete school kits**. The parents were so grateful; it really helped their family budgets.

Great Treasures Preschool

The Great Treasures Preschool opened its doors on September 11, 2002. It had 21 years of great success. We shared space with amazing teachers, parents, and children for all those years. We have heard countless stories of wonderful memories made in those years. We are grateful to have been a part of Heather Webber's vision and the school board that supported her to get it up and running. Thank you to last year's teachers that finished so well and assisted us in cleaning up the space and liquidating all the school's supplies. It went incredibly well. Thank you, Joanne Neilson, Caroline Felker and Leah Lambert. The final graduation program and farewell was a lovely event and was very well attended. God bless the final preschool class of 2023.





Embracing Visitors

In the summer months, we planned and prepared for the **September Kickoff week**. With much planning and booking and volunteer requests, we were able to host one Sunday (Sept. 10) after-service event as our welcome and Kickoff day, and one Friday Open House (Sept. 15) evening event as our invitation to come and see what Bethany had to offer for programs. Sunday was very successful. We had many visitors to church that day and many from the community came by as well. We had bounce houses, face painters, a balloon clown, a petting zoo, food trucks, and food provided by Bethany. Friday's event went well and gave opportunity for people to connect and meet our program leaders. We had more of a café environment with live music. It made for a great Kickoff week, ready to launch a new church season.

Autumn programs began and we had many people attending and plugging in. All our ministries were full and thriving.

Christmas seemed to come quickly. The church was decorated for the season by staff. We would like to take this opportunity to thank Cathy Cochrane and Carol Stinton for the lovely sanctuary décor they provided for many, many years. They have both retired from their volunteer position and we wish them God's blessing for their many years of service.

We hosted a **Senior's Christmas Coffee** morning, a **Merry and Bright** carol evening, a **Young Adults Christmas Meal**, a **Youth Christmas Banquet**, as well as the **Children's Christmas pageant**. They were all well attended. And our church was full on Christmas Eve. Thank you to all the volunteers that made these Christmas events possible and made Bethany an inviting place to come.



Serving our Community with Hospitality

We truly want to thank our many volunteers that help in so many ways here at Bethany. It takes a village to make everything come together. We are grateful to the Greeters that warmly welcome our guests each week. Thank you to the Ushers that serve so diligently each Sunday and to our Connect Centre teams who cheerfully answer any questions people may have. We are thankful for our Library teams who are there to help you and/or your families choose books or videos and for our Coffee Connections teams. That coffee or a special snack really helps with the connections being made each week. We are trying to form culinary teams for funerals, youth events, church-wide events, seniors' teas, men's and ladies' events. We called on a number of you to help form a team to prep and serve at a number of our events this year. Thank you. We are grateful for you.



Our helpful Connect Centre

We are also grateful for our staff and our custodial team. With the constant set-ups and take-downs that happen, we don't take you for granted. You are all integral to making everything come together each week.

We had to bid farewell to some of our beloved staff this year. We grow to build great trust and relationships and so those are always difficult farewells. Farewell to Hazel Jones, our former Pastoral Care Nurse, who served so lovingly and diligently for many years. And we wish Mer Yang and Lorne MacDonald our best wishes also. We gained new staff members as well. I am so grateful to Kelly Poirier who was hired as our new Kitchen Coordinator. She quickly became a valued part of our team as she took on all that is required to keep our kitchen clean and stocked, and is a key team member as she partners with all of us and our needs with the many events we host at Bethany. We also welcomed Jen Brum who has started as our new Women's Ministry Coordinator. I am excited to see her lead and direct and bring new energy to our Women's Ministries. We have a wonderful staff team. All have amazing giftings in each of their respective roles. I love serving our church family together with them. Praying we walk together into this year extending Jesus' love to our church and the community around us.



*You are the body of Christ.
Each one of you is a part of it.
- 1 Corinthians 12:27*

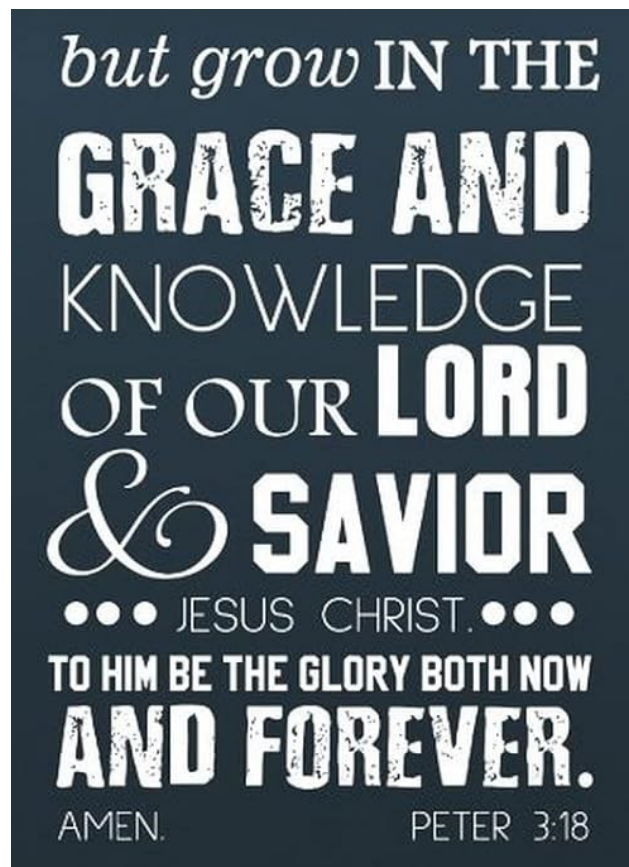


And now for something different ...

With church growth comes change. I can only speak for myself, and so with discussion about how the church has been growing and the workload increasing due to that reality, we were looking at the obvious needs of our church.

Along with my regular duties, I was also making many visitations. There did not seem to be enough hours in a day. And so Kelly Poirier and Jen Brum were hired, giving me space to devote more of my time to Community and Pastoral Care work. Going forward, that will be my focus. I am truly enjoying this new role. I will continue to work with the community, and I look forward to meeting many of you in the coming year. I know God is a good God and I pray for His equipping as I walk into this new position. He tells us to be strong and courageous and walk in His ways. I pray we can be an encouragement to each other as we walk into this new year.

Serving together with you and embracing what God has in store ...



KITCHEN

Submitted by Kelly Poirier



I would like to thank you for the warm welcome I received since starting my new position as the Kitchen Coordinator on November 6, 2023. All the staff and volunteers have been so kind and welcoming as I began this new role.

As we all know, people come together when food is involved, and I am honoured to be a part of that blessing in this church. One of my gifts is to serve, which is why this role is perfectly suited for me! My role is to serve and support all the ministries in the church (Seniors, Women, Men, Young Adults, Youth, Children and community events). I serve through providing coffee, treats and food for Sunday morning coffee, Tuesday Cheer, Women Together, Youth nights, community outreach and AWANA. Food is a way we can show God's love to each other and our community. I am honoured to provide food services to this church so we can grow the Kingdom of God's people.

My role is to plan with the different ministries to determine what is required for the event. I shop and order all the food items and supplies required. I ensure all items are labelled and everything is ready and available on the date of the event. For larger events, and as required, I am in the kitchen working all sides with the staff and volunteers as we serve our congregation and community.

A large portion of my role is to ensure there is a fully stocked, clean and organized kitchen. This ensures we can carry our mission to serve the congregation at Bethany Chapel as well as reach new people to show them the Love of Christ.



*So whether you eat or drink or
whatever you do, do it all for
the glory of God.*

1 Corinthians 10:31





MISSIONS

Submitted by Lyle Simpson

Thank you for praying for Bethany Chapel mission workers and mission initiatives. While our mission workers are not as many as Bethany once had, the initiatives from Bethany Chapel that reach out for the sake of the gospel continue to be many. The Missions Committee is a small aspect of this at Bethany and we would like to acknowledge the tremendous work done by those on the ESL team, community outreach team, youth and children's ministries, pastoral care, men's ministry and women's ministry, to name some of Bethany's missional efforts. Continue to pray that missions will engage the hearts of our Bethany members.

COMMENDED WORKERS *(financially supported)*

Amy O.

Together with local teammates, and under the leadership of the local fellowship, Amy is the general director of a ministry training program in the Middle East. She is passionate about the health of the church and is involved in counselling and inner healing prayer ministry. She feels privileged to also be able to help train others in these areas, not only in Turkey, but also in several neighbouring nations. She loves worship, mentoring, and anything to do with developing leaders. She is excited about what is coming out of the church in the Middle East, which will enrich and add greatly to the global church family.

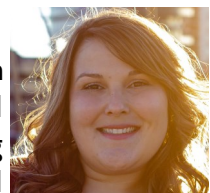
Jorge and Gail Atiencia - Latin America Mission, Ecuador

Jorge and Gail serve with Latin America Mission. Their primary ministry continues to be the formation of Bible expositors on a variety of fronts. The "escuelitas" (mini preaching schools), where pastors as well as lay people receive training and mentoring over a three-year cycle, continue to thrive and multiply in Colombia, Ecuador, Peru, Bolivia, Argentina, Cuba and Central America, with initiatives bearing fruit in Brazil and Uruguay. Jorge's commitment to biblical preaching includes extensive collaboration through his leadership on the Latin America Regional Team of Langham Preaching, which seeks to provide participants with tools, mentoring and fellowship to sharpen and deepen the impact of their preaching. At the annual Transformational Preaching Encounters in Medellin, Jorge models Bible exposition and leads plenary workshops while Gail often translates for visiting English-speaking professors and coordinates small group practice. They are based in the city of Cuenca, Ecuador.



Vanessa Kordupel - Inter-Varsity Christian Fellowship (IVCF), Alberta

Vanessa serves with Inter-Varsity Christian Fellowship in Calgary, with a focus on senior high school students. She ministers to students, both Christian and non-Christian, to make God known in a relevant way. Schools are a challenging mission field, full of competing ideologies; students are searching for identity and need to know the good news of Jesus Christ. Vanessa mentors students, hosts Bible studies that explore how Scripture is relevant to students' lives, and organizes outreach and evangelistic events. She longs for students to decide to follow Jesus as their Saviour and Lord. Vanessa is also involved with IVCF staff development across Canada, encouraging and mentoring from camp to campus settings.



COMMENDED WORKERS *(not financially supported)*



Mick and Caroline Brown - WEC International, Ontario

Mick and Caroline continue to work as Canadian directors of WEC International, whose vision is to see Christ known, loved and worshipped by the unreached peoples of the world. Based at their HQ in Ontario, their role includes mobilizing Canadians to join WEC as missionaries, training and supporting missionaries for international missions, and working with the WEC organization internationally.



Janet Haight - SIM Canada, Saskatchewan

Janet lives in Saskatoon, where she is ministering to newcomers to Canada as a member of the SIM Canada field team. She also provides support to her parents, as needed. God has led Janet into building relationships with newcomers who need friendship and help with English as they transition to life in Canada. Janet maintains close contact with indigenous children's ministry colleagues in Burkina Faso (West Africa), where she served with SIM for 18 years.

SHORT-TERM MISSIONS WORK

There were no short-term missions activities from Bethany Chapel in 2023.

2023 MISSIONS COMMUNICATIONS AND EVENTS

There were two missions events to note from 2023:

May 2023: Bethany Chapel sent Pastor Paul Brushaber, Pastor Brennan Dyck, and Barry Lappin (Bethany Elder) on a survey trip to review the ongoing work of Wycliffe Thailand and gain a better understanding of ministry needs.



Pastor Wat &
his wife, Jimmie

November 2023: Missions Conference – the 2023 missions conference was focused on “refreshing” the vision of missions at Bethany Chapel. Pastor Wat and Jimmie Suebthayat (Wycliffe Thailand) joined Bethany Chapel from Thailand to share in the missions conference. The conference included a Saturday morning event where speakers Pastor Wat and his wife, Jimmie, Janet Haight (SIM) and Vanessa Kordupel (IVCF) shared impact stories from their ministries and participated in a discussion on the changing aspects of missions plus the importance of evangelism and discipleship. Video presentations from Amy O and Gail and Jorge Atencia (LAM) were played. The Sunday morning service focused on Wycliffe Thailand with stories shared by the Suebthayat’s and a message presented by Pastor Wat.



KINGDOM FRIENDSHIPS

Kingdom Friendships is an Elder-initiated partnership between Bethany Chapel and Wycliffe Thailand. This relationship has been ongoing since 2016, providing financial support from Bethany Chapel to Wycliffe Thailand and building relationships between the two that focus on mission efforts in SE Asia.

The financial contributions that Bethany has made to Wycliffe Thailand have in large part helped the foundation run its operations. This includes:

- support of several Bible translation projects (including in “closed” countries);
- training of pastors from both Thailand and surrounding countries;
- outreach efforts to the poor and needy throughout Thailand;
- administrative support for mission agencies to work in Thailand.

The financial support goal is ~\$63,000 per year. Over the past few years, this support has varied anywhere between \$20,000 and \$54,000. Wycliffe Thailand has a goal to engage funding from local churches and businesses, however, the spiritual discipline of tithing and giving to missions is not strong in Thailand. Christianity is a very small percentage of the religious population. The lack of giving to missions somewhat represents the challenging spiritual conditions that exist in SE Asia.

Bethany Chapel and Wycliffe Thailand (including Wycliffe Canada) plan to continue building a friendship reflecting God’s grace and love. In 2024, Bethany intends to send a youth missions team to Thailand, joining with Wycliffe Thai members and a local church for outreach opportunities and engaging in aspects of mission work in SE Asia. Approximately 10 high school students and 4 to 5 youth leaders from Bethany will be involved in this trip. Past involvements between Bethany Chapel and Wycliffe Thailand have included ESL trips, a Bethany internship position in Thailand, and two individuals from Wycliffe Thailand learning English in Calgary with Bethany support. Our friends in Thailand continue to encourage us to join them!

COMMITTEE MEMBERS

In 2023, the committee was comprised of Kirstyn Mackie, Lyle Simpson, Chelsea Thiessen, Bruce Raddatz, Tom Ramsay and Gerald Grasmeyer (Deacon liaison). Many thanks to Andrew McCausland (Deacon liaison), who was on the Missions Committee from April 2021 to June 2023.

Opening Doors
to God's Truth
and Love

Make disciples
of all nations

The Missions Committee encourages each member of the congregation to consider their individual role in mission work to which we all have been called, whether local or overseas. If you are considering missions in any capacity, please let the committee know and we will work together toward the great commission of Christ.

IN SUMMARY

The Missions Committee is privileged to witness and be involved in the opportunities that God brings to Bethany and to share this with the Bethany community. May we all continue to persevere in our faith in Jesus Christ and be a resilient community, bringing hope to our city and around the world as we consider missions and the calling of the Great Commission.

YOUTH & YOUNG ADULTS

Submitted by Will Moran



My wife and I can hardly believe that it has already been five months since I joined the team here at Bethany. During this time, we have been going through a period of growth and development, much like tending to a garden. Planting seeds, fertilizing the ground, and now waiting to see what grows. I've found a strong sense of fulfillment in my role here as the Youth & Young Adults Pastor at Bethany Chapel.

Before I dredge on, I would like to recognize the leaders of our youth ministry, who, week after week, dedicate their time, energy, and prayer to the next generation of the church. They love so well, and that deserves a standing ovation for all they put into the ministry. Secondly, I would like to thank Pastor Brennan for establishing and transitioning my role well. He's eased me into a monumental task and has done so with grace, patience, and competence. Thank you, Brennan.

I have a deep respect for the youth in our church, and I strongly believe that a healthy church, one that is deeply entrenched in the way of Jesus, prioritizes growth in its young people. Seeing their positive response this past semester has been an affirmation and joy that we are stepping in the right direction. They are being heard and understood, and as a result, they are more excited and invested in this church.



Youth

This past semester has been one of transition. From the Youth nights being taken from Wednesdays to Fridays, to now being large enough to host a Jr. High ministry on Friday, and a Sr. High ministry on Sunday. We've seen consistent numbers of 60-70 coming out, with 78 being our peak in late November.

Every night we meet, we break bread. The idea of fellowship and food go hand in hand, and we've been delighted to see that yes, even if a teenager has eaten dinner, they're still hungry into the evening. Who would have guessed? We've been transitioning the youth into their "Gatherings," small groups they meet in throughout the year. While the groups are in their infancy, we are ecstatic about the growth opportunities we'll gain from the conversations taking place.

As we transition into the New Year, the emphasized word for the ministry is "consistency." Consistency goes beyond just having a calendar, curriculum, and plan - it emphasizes a certain quality over a long period of time. In youth, this matters. Having a consistent base to go back to matters in an age where anything can be changed or altered within weeks or months. Consistency is the lifeblood of a solid youth ministry.

In this new year, we are aiming to increase the quality of teaching, communication, and structure. In return, we are setting a base and expectation for the ministry that will be foundational for the years to come. We want this ministry to take Jesus' message seriously, which is fueled by warmth and compassion for our neighbours, converting our rhetoric to reality.

Throughout the year, we'll be initiating "Serve-Nights," which are evenings dedicated to loving the city well, in Calgary, as it is in heaven. In coordination with Mary and her outreach/community ministries, the youth will be equipped to serve various needs in the city, seeing how to practically meet the needs of individuals in our neighbourhood.

Some events on the horizon are an encouragement as well, with our grade 12s going to Thailand in connection with Wycliffe, to a youth retreat happening this spring. Both experiences will allow us to witness their personal growth outside of Friday and Sunday nights.



As we summarize the year's end, I want to again thank you for entrusting me and my vision for youth. I believe we are heading in the right direction, and I thank you for your ongoing prayers and support. Last tidbit. If you or anyone you know is passionate about serving the next generation of our church in youth, please reach out. We are always in need of new leaders and I would be excited to have you on.

Young Adults

The Young Adults Ministry continues to thrive under the leadership of Mark & Gaylene Sawatzky. As the Youth Ministry settles in, I look forward to spending additional time investing in our young adult community. We're currently hosting an average of 12-15 young adults weekly at the Sawatzky's home for a Bible study and time of fellowship, and are excited for this group to continue growing in their understanding of Scripture. At the beginning of every month, we'll host the Young Adult's Ministry here at the church, giving us ample opportunities to continuously pour into this age and stage of life.



“

Don't let anyone look down on you because you are young, but set an example for the believers in speech, in conduct, in love, in faith, and in purity.

- 1 Timothy 4:12

”

APPENDICES

FAMILY LIFE

BIRTHS

Winston Comrie Lappin - May 15, 2023
Ava Anne Rendall - August 22, 2023
Oluwadurotimi Erikitola - September 17, 2023
Emmett Dawson Dyck - November 28, 2023
Hannah Nicole Rampton - December 9, 2023

CHILD DEDICATIONS

Oluwadurotimi Erikitola - December 17, 2023

IN LOVING MEMORY

Robert Bollen - February 17, 2023
Ethel Huber - January 19, 2023
Olive Scott - January 24, 2023
Elva Webb - March 26, 2023
Edna McNichol - April 10, 2023
Barbara Greenwood - August 29, 2023
Stan Ballard - October 30, 2023
Sharon Strachan - November 4, 2023

LEADERSHIP TEAM

(As of December 2023)

Pastoral Staff

Dr. Paul Brushaber, Lead Pastor
Brennan Dyck, Pastor of Ministries
Mary Dyck, Community & Women's Ministry Director
Will Moran, Youth & Young Adults Pastor
Rachael Stewart, Children's Ministry Coordinator
Kenzy Jali, Children's Ministry Assistant

Operational Staff

Lorne MacDonald, Director of Operations
Lisa Hicks, Administration
Joseph Jali, Lead Custodian
Peter Menzes, Audio & Video Technology Coordinator
Kelly Poirier, Kitchen Coordinator
Louise Prefontaine, Bookkeeper
Debra Unrau, Administration Assistant

Custodians (Casual)

Matthew Burgess
Suzanne Clarke
Mel Dow
Darrell Krien

Elders

Dr. Paul Brushaber
Stephen Chuang
Barry Lapping
Aaron Mackie, Chair
Jay Somers
Matthew Uponi

Deacons

Gerald Grasmeyer
Robert Hohls, Treasurer
Lorne MacDonald, Invited Staff Member
Andrew McCausland, Chair
Gaylene Sawatzky

2023 MINUTES

Bethany Chapel of Calgary

Annual General Meeting

May 28, 2023, 6:30pm
Church Auditorium

Minutes

- Secretary: Lisa Hicks
- AV & Recording: Carmen Dool
- Sound: Claude Campagne

Welcome, Opening Comments, Call to Order: (Pat Taylor - MC)

- Everyone was welcomed to the meeting.
- Quorum was established with 90 members registered in attendance (later updated to 96 with late check ins) bringing us to 48% of our total membership of 199 (25% required for quorum).
- The 73rd Annual General Meeting of Bethany Chapel was called to order.

Opening Prayer: (Matthew Uponi - Elder)

Approval of Agenda: (Pat Taylor)

- MOTION: [1] To adopt the Agenda for this AGM as presented
- MOVED: Erich Dyck SECONDED: Mel Dow
- Questions: None
- All in favour – All Opposed - Nil Abstained - Nil
- CARRIED

Approval of Minutes of March 13, 2022: (Pat Taylor)

- MOTION: [2] To dispense with reading the printed and posted March 13, 2022 AGM minutes
- MOVED: Aaron Cossette SECONDED: Jim Robert
- Questions: None
- All in favour – All Opposed - Nil Abstained - Nil
- CARRIED

- MOTION: [3] To accept the AGM Minutes of March 13, 2022
- MOVED: Mel Dow SECONDED: Thomas Unrau
- Questions: None
- All in favour – All Opposed - Nil Abstained - Nil
- CARRIED

Lead Pastor Report (Dr. Paul Brushaber - Lead Pastor)

1. Strategic Plan - began two years ago. Out of that came six values (brief form posted in foyer). They include a commitment to: change our weekend culture to have all levels of maturity represented; initiate new ministries (Awana, Family Night, Mental Health Ministry); renovate our facility with ministry needs in mind; analyze the viability of the play-school; consider new staff structure; have discussions about our church name and attendance goals; look at funding models, and more - holding staff and elders, together, accountable for progress.
2. Exciting progress in 2022 and now more into 2023:
 - Almost fully staffed
 - New ministries: Awana (over 100 registered by year end) and Grandparenting (previous year)
 - Healthy congregational mix (blend of spiritually mature to some not yet saved in attendance)
 - Annual growth is exceeding our 10% goal; will likely be closer to 35 or 45% this year
 - People are coming to faith
 - Age of church is getting younger

3. Wycliffe Thailand Trip

- What it is:
 - The Wycliffe Thailand initiative, or Kingdom Friendships, came out of the Elder Board around 2014, funded through a New Initiatives Fund (largely from Estate gifts). It was then taken over by the Missions Fund.
 - A team (Pastor Paul, Barry Lappin - elder, and Brennan Dyck - staff) was requested by the Missions Committee to visit and find out what they are doing, what we are supporting, and how best we can continue to support them.
- Impressions:
 - a. Long, busy days (10 days total), and very, very long flights
 - b. Very foundational work: pre-evangelism and pre-church
 - c. Language focused: begins with spoken language, working mostly with non-believers since no one in the language knows the gospel
 - d. Many strands need support to make the system work (language work, recruitment of linguists, church planting). Our team came back confused about how all the strands fit together.
 - e. Some really good, committed people are doing tedious work on a shoe-string budget.
 - f. The system is highly Wat-dependent.
- Suggestions:
 - a. Our support is vital, but we do not want them to be overly dependent on one source. (Ideally not over 50%.) We are probably at a good level.
 - b. We have requested a clear plan from Wycliffe Thailand to help us understand how all the strands of their system strategically work together.
 - c. Our best way to support them in ESL is not by short-term trips, but to host them here for six to twelve months on an immersion experience, so they can learn English intensively.

Elder Report (Aaron Mackie - Elder Chair)

Elders worked on final changes to the Constitution and the Strategic Plan.

Changes in church staff: Hazel retired, Brennan Dyck came on, and Steve more recently stepped down from his position as Executive Pastor. Gratefulness was expressed to Steve for all his work.

Reporting structure changed: now, all ministries report to Brennan as Director of Ministries, who reports to the Senior Pastor (Paul), and all office staff report to Lorne as Director of Operations, who reports to the Senior Pastor (Paul).

More changes in staff:

- Youth Ministries - Devon took a position elsewhere, and Jon Rendall was hired as Interim Youth Pastor.
- Children's Ministries - Mer moved on, and Rachael was hired to fill this role.

Church growth:

- We are up from our last report of seeing 200 people on a Sunday morning grow to 300, to more recently seeing over 500 people attending the service, 25% of them under the age of eighteen.
- New attendees are coming from diverse places: some are new to the area, others are new believers, others sought a church that unabashedly teaches Biblical truth (as we do), and others came because of our programs (in particular, AWANA).
- We now face good problems related to space due to growth, and ensuring we continue to grow in relationship with God so that our ministries help people grow, develop, and reach out to others.

Aaron expressed thanks to John for serving as deacon chair through what were some really interesting and challenging times, with Covid restrictions and financial uncertainties.

Financial Reports (Robert Hohls - Treasurer)

Presentation of 2022 Financial Statements:

- set out to have a balanced budget
- ended with surplus of \$93,000.

- Questions: None
- MOTION: [4] To accept the audited 2022 Financial Statements
- MOVED: Graham Thiessen SECONDED: David Johnson
- All in favour - All Opposed - Nil Abstained - Nil
- CARRIED

Presentation of proposed 2023 Budget:

- Goal of a balanced budget
- Focused attention on some areas of the building that require maintenance
- Questions?
 - Q1. What is behind the increase in Missions?
 - We had a change, driven by the Elders and Pastor Paul, in how we set the budget for the Missions Committee. It is now set at 15% of budgeted contributions. The Missions Committee will decide how to use it.
 - Q2. What is behind the increase in costs for Building, Office and Other?
 - That is around IT costs for updating. We had to improve our IT infrastructure because it is quite dated
 - Q3. What is behind the increase in Capital costs? (Fred Schuman)
 - The focus is on maintenance: doors at front entrance need replacing, HVAC needs repair, basement requires changes, under insurance, under the Plan to Protect Act
- MOTION: [5] To accept the 2023 Budget as presented
- MOVED: Steve Simpson SECONDED: Graham Thiessen
- All in favour – Majority Opposed - Nil Abstained – One
- CARRIED

Confirmation of auditors for fiscal year 2023:

- MOTION: [6] To accept Dart Bryant Chartered Accountants as auditors for fiscal year 2023
- MOVED: Mel Dow SECONDED: Howard Van Camp
- All in favour - All Opposed - Nil Abstained - Nil
- CARRIED

Deacon Report (John Kelly - Deacon Chair)

John expressed thanks to Claude, Carmen, Pat, Matthew, and Mary for their contributions in helping the deacons put on the AGM.

He addressed facility bathroom renovations, which were deferred from the 2021 budget and then approved in 2022. Since the amount increased significantly mid-year (to 10% or greater of budget) due to design changes, our constitution mandates a congregational vote. This was inadvertently missed. John assured all that on future spending there would be better communication and accountability.

John showed that our cash on hand was being drawn down already in pre-Covid years, but is now recovering to what, by all appearances, looks like a healthy, sustainable model.

This completes John's term as deacon, so he took the opportunity to thank those he had served with: Gerald, Robert, Lorne, Steve Marston, Andrew, Don, Whitney Ypma, Aaron Cossette, and Dave D'Amico.

Election of Deacons (John Kelly)

Gaylene Sawatzky – nomination as a new Deacon

- John read bio of Gaylene Sawatzky that was distributed and posted for several weeks prior to meeting
- MOTION: [7] For the election of Gaylene Sawatzky as a Deacon
- MOVED: Loretta Zwaan SECONDED: Uzoma Uponi
- All in favour - All Opposed - Nil Abstained - Nil
- CARRIED

Don Stinton - renewal

- MOTION: [8] For the renewal of Don Stinton as a Deacon

- MOVED: Mel Dow SECONDED: Aaron Cossette
- All in favour - Majority Opposed - Nil Abstained – One
- CARRIED

Questions & Answers (Patrick Taylor)

Questions submitted:

Q1. Updates on a bulletin?

A. [Brennan Dyck] Will update communications via website & bulletin boards; potential for a return to paper bulletin in Fall.

Q2. Upcoming building renovations?

A. [Aaron Mackie] Working with Plan to Protect, a group that helps ensure vulnerable individuals (ie. children) are not put in situations with high risk for abuse or harm. Upcoming basement renovations are related to this.

Questions asked in person:

Q1. What is the \$187,000 line item for capital?

A. [Robert Hohls] This is a combination of maintenance (entrance doors), the HVAC unit that had to be replaced, replacing old computers in the office, allocation for basement changes that need to be done, and minor repairs within the building (6-7 smaller items).

Q2. Any thought to add a lift from 1st to 2nd floor?

A. [Robert Hohls] This has not come up in discussion. Will bring to next Deacon meeting.

Q3. Anything over 10% of Annual Budget needs congregational vote?

A. [Robert Hohls] That 10% is on a single item, so if one single project, like a 'bathroom renovation', is more than 10%, then we need congregational approval, but not if it consists of multiple smaller projects.

Q4. Pastor Paul alluded to a name change as part of the Strategic Plan. Explain?

A. [Paul Brushaber] It is within our plan to have a discussion. We run into trouble with the word 'Chapel' since people without Christian background don't associate 'chapel' with 'church'; it doesn't come up in Google Search if someone is looking for a church.

Q5. When will the Strategic Plan roll out to the congregation?

A. [Paul Brushaber] It is a document meant for staff deliverables, not meant to be public but for goals. Elders will review annually.

Q6. Our attendance is probably double our membership. Any plans to invite people into membership?

A. [Brennan Dyck] Yes, we are reviewing the existing membership process to update it and will communicate it to newcomers.

Q7. Any plans to have discipleship programs for those who are new and accepting Christ?

A. [Brennan Dyck] Yes, we are looking at having focused lay-leaders to invest in discipleship. Starting in Fall, we intend that, through connecting groups, we will have tracks for one-on-one or group discipleship.

Congregant comment: regarding Strategic Plan, communicating the plan to ministry leaders can move them collectively toward the strategy and vision of the church.

Q8. What is being done to encourage believers to be baptized?

A. [Paul Brushaber] We need to emphasize it more by coordinating with ministries across the Bethany family, particularly in relevant age groups. We need to talk about it and include it in the bulletin to avoid the need for multiple announcements.

A. [Brennan Dyck] I am in conversation with six people regarding baptism.

Q9. Why is the preschool closing in Fall?

A. [Aaron Mackie] Funding has changed, and we needed the space for our Sunday School children.

Q10. Is there a time frame around Jon Rendall being 'Interim Youth Pastor'?

A. [Brennan Dyck] We are in the process of finding a permanent, full-time youth pastor, and are in contact with a few strong candidates, so we should have someone soon (this summer).

Closing Prayer (Mary Dyck, Community & Women's Ministries Director)

MOTION: [9] For the Adjournment of AGM (Patrick Taylor)

MOVED: Dan Brantner SECONDED: David Wood

Questions: None

All in favour - All Opposed - Nil Abstained - Nil

CARRIED

Meeting adjourned at 8:09PM

DRAFT

FINANCIALS



TREASURER REPORT

Submitted by Robert Hohls

Attached to this report you will find the Financial Statements of Bethany Chapel of Calgary (“Bethany”) for the year ended December 31, 2023, together with the proposed Budget for 2024.

In 2023, the General Fund excess of total revenues over total expenses, was approximately \$165,000 compared to a balanced budget. Praise God for his never-ending faithfulness and the congregation’s continued faithful giving.

The combined General Fund contributions and other revenue exceeded what we had planned, while the operating expenses were down mainly due to lower spending on ministries, staffing and missionary conferences, partially offset by higher utility and office costs.

Our General Fund is the primary pool of funds that are used to carry on the church ministries, support missions, and perform the administrative activities of Bethany; it is in this Fund where most congregational giving is directed. When we prepare our Annual Budget for the General Fund, we generally plan for a “balanced budget” – that is, total expenses are budgeted to match our budgeted total revenues (contributions plus other sources of revenue).

In 2024, we are planning a surplus budget, which includes an increase in contributions over 2023. We believe that the increase is a balance of being conservative and being faithful when budgeting for 2024 contributions. The church is currently in a strong financial position due to the continued fiscal stewardship of Bethany by its staff and volunteers and we are seeing continued growth in the size of the congregation.

The leadership believes that this is a prudent planning assumption considering the continued growth, while supporting the church’s ministries.

Our Care Fund provides benevolent support to those in need within the church body and in the community through various forms of financial assistance, together with the pastoral care component. Many within Bethany support this fund through regular contributions and we are thankful for your ongoing commitment to help those in need. We ask for your continued contributions to this fund to carry on this ministry as we have in the past.

The New Initiatives Fund represents the accumulation of surplus funds, including contributions from estates, set aside for special projects and opportunities as may be directed by the Elders. The Special Missions Fund holds and disburses funds raised for Bethany’s short-term mission experiences and projects. Recent decisions have been made by the church leadership to create

long-term predictability and stability for missions funding. Each year, Missions will receive 15% of the offering target. The Special Missions Fund will be viewed as a “Reserve Missions Fund,” allowing the Missions Committee some flexibility when unplanned opportunities arise.

The Capital Reserve Fund accumulates through a regular allocation of 8% from General Fund contributions, as well as from specific contributions towards capital projects. Bethany incurred expenditures relating mainly to renovating the youth room in the basement, as well as other building related updates and computer equipment upgrades. In 2024, the planned capital budget will continue to focus mainly on updating parts of our building.

On behalf of the Deacons, I would like to thank the staff and volunteers who administer Bethany’s financial operations, and those of you who so faithfully provide financial support for Bethany.

As always, please feel free to contact me with any questions or comments that you might have relating to the financial statements, the budget, or any financial matter relating to Bethany.

BETHANY CHAPEL OF CALGARY
Financial Statements
Year Ended December 31, 2023

BETHANY CHAPEL OF CALGARY
Index to Financial Statements
Year Ended December 31, 2023

	Page
INDEPENDENT AUDITOR'S REPORT	1 - 2
FINANCIAL STATEMENTS	
Statement of Financial Position	3 - 4
Statement of Operations and Changes in Fund Balances	5
Statement of Cash Flows	6
Notes to Financial Statements	7 - 11
Schedule of Other Revenue (<i>Schedule 1</i>)	12
Schedule of Missionary Support (<i>Schedule 2</i>)	12
Schedule of Operating Expenses (<i>Schedule 3</i>)	13



Dart Bryant LLP
Chartered Professional Accountants
250, 1319 Edmonton Trail NE
Calgary, Alberta - T2E 4Y8
www.dartbryant.com
P. 403-230-3764
F. 403-230-3766

INDEPENDENT AUDITOR'S REPORT

To the Members of Bethany Chapel of Calgary

Qualified Opinion

We have audited the financial statements of Bethany Chapel of Calgary (the Church), which comprise the statement of financial position as at December 31, 2023, and the statements of operations and changes in fund balances and cash flows for the year then ended, and notes to the financial statements, including a summary of significant accounting policies.

In our opinion, except for the possible effects of the matter described in the *Basis for Qualified Opinion* section of our report, the accompanying financial statements present fairly, in all material respects, the financial position of the Church as at December 31, 2023, and the results of its operations and cash flows for the year then ended in accordance with Canadian accounting standards for not-for-profit organizations (ASNPO)

Basis for Qualified Opinion

In common with many charitable organizations, the Church derives revenue from donation contributions the completeness of which is not susceptible of satisfactory audit verification. Accordingly, our verification of these revenues was limited to the amounts recorded in the records of the Church. Therefore, we were not able to determine whether any adjustments might be necessary to contributions, excess of operations, and cash flows from operations for the years ended December 31, 2023, current assets and fund balances as at December 31, 2023, and fund balances, as at January 1 and December 31 for both 2023 and 2022. Our audit opinion on the financial statements for the year ended December 31, 2022 was modified accordingly because of the possible effects of this limitation of scope. Consequently, we were unable to determine whether any adjustments to these amounts were necessary.

We conducted our audit in accordance with Canadian generally accepted auditing standards. Our responsibilities under those standards are further described in the *Auditor's Responsibilities for the Audit of the Financial Statements* section of our report. We are independent of the Church in accordance with ethical requirements that are relevant to our audit of the financial statements in Canada, and we have fulfilled our other ethical responsibilities in accordance with these requirements. We believe that the audit evidence we have obtained is sufficient and appropriate to provide a basis for our qualified audit opinion.

Responsibilities of Management and Those Charged with Governance for the Financial Statements

Management is responsible for the preparation and fair presentation of the financial statements in accordance with ASNPO, and for such internal control as management determines is necessary to enable the preparation of financial statements that are free from material misstatement, whether due to fraud or error.

In preparing the financial statements, management is responsible for assessing the Church's ability to continue as a going concern, disclosing, as applicable, matters related to going concern and using the going concern basis of accounting unless management either intends to liquidate the Church or to cease operations, or has no realistic alternative but to do so.

Those charged with governance are responsible for overseeing the Church's financial reporting process.

(continues)

Independent Auditor's Report to the Members of Bethany Chapel of Calgary (continued)

Auditor's Responsibilities for the Audit of the Financial Statements

Our objectives are to obtain reasonable assurance about whether the financial statements as a whole are free from material misstatement, whether due to fraud or error, and to issue an auditor's report that includes our opinion. Reasonable assurance is a high level of assurance, but is not a guarantee that an audit conducted in accordance with Canadian generally accepted auditing standards will always detect a material misstatement when it exists. Misstatements can arise from fraud or error and are considered material if, individually or in the aggregate, they could reasonably be expected to influence the economic decisions of users taken on the basis of these financial statements.

As part of an audit in accordance with Canadian generally accepted auditing standards, we exercise professional judgment and maintain professional skepticism throughout the audit. We also:

- Identify and assess the risks of material misstatement of the financial statements, whether due to fraud or error, design and perform audit procedures responsive to those risks, and obtain audit evidence that is sufficient and appropriate to provide a basis for our opinion. The risk of not detecting a material misstatement resulting from fraud is higher than for one resulting from error, as fraud may involve collusion, forgery, intentional omissions, misrepresentations, or the override of internal control.
- Obtain an understanding of internal control relevant to the audit in order to design audit procedures that are appropriate in the circumstances, but not for the purpose of expressing an opinion on the effectiveness of the Church's internal control.
- Evaluate the appropriateness of accounting policies used and the reasonableness of accounting estimates and related disclosures made by management.
- Conclude on the appropriateness of management's use of the going concern basis of accounting and, based on the audit evidence obtained, whether a material uncertainty exists related to events or conditions that may cast significant doubt on the Church's ability to continue as a going concern. If we conclude that a material uncertainty exists, we are required to draw attention in our auditor's report to the related disclosures in the financial statements or, if such disclosures are inadequate, to modify our opinion. Our conclusions are based on the audit evidence obtained up to the date of our auditor's report. However, future events or conditions may cause the Church to cease to continue as a going concern.
- Evaluate the overall presentation, structure and content of the financial statements, including the disclosures, and whether the financial statements represent the underlying transactions and events in a manner that achieves fair presentation.

We communicate with those charged with governance regarding, among other matters, the planned scope and timing of the audit and significant audit findings, including any significant deficiencies in internal control that we identify during our audit.

February 14, 2024



Chartered Professional Accountants

BETHANY CHAPEL OF CALGARY
Statement of Financial Position
December 31, 2023

	General Fund	Care Fund	Special Missions Fund	Capital Reserve Fund	Invested in Property and Equipment	New Initiatives Fund	2023	2022
ASSETS								
CURRENT								
Cash and cash equivalents (Note 4)	\$ 1,121,267	\$ 41,734	\$ 36,555	\$ 83,753	\$ -	\$ -	\$ 1,283,309	\$ 1,210,391
Accounts receivable	9,063	2,500	-	-	-	-	11,563	15,243
Interest receivable	22,246	-	-	-	-	-	22,246	4,833
Goods and services tax recoverable	5,945	-	-	-	-	-	5,945	8,039
Prepaid expenses	11,810	(295)	-	-	-	-	11,515	11,865
	1,170,331	43,939	36,555	83,753	-	-	1,334,578	1,250,371
CAPITAL ASSETS (Note 5)								
	\$ 1,170,331	\$ 43,939	\$ 36,555	\$ 83,753	\$ 2,437,540	\$ -	\$ 3,772,118	\$ 3,626,572

The accompanying notes are an integral part of the financial statements

BETHANY CHAPEL OF CALGARY
Statement of Financial Position
December 31, 2023

	General Fund	Care Fund	Special Missions Fund	Capital Reserve Fund	Invested in Property and Equipment	New Initiatives Fund	2023	2022
LIABILITIES AND FUND BALANCES								
CURRENT								
Accounts payable and accrued liabilities	\$ 38,138	\$ 482	\$ 6,470	\$ 4,259	\$ -	\$ -	\$ 49,349	\$ 55,532
Unearned Revenue	110,206	100	-	-	-	-	110,306	119,216
	148,344	582	6,470	4,259	-	-	159,655	174,748
FUND BALANCES								
Unrestricted	1,021,987	-	-	-	-	-	1,021,987	946,153
Internally restricted	-	-	-	79,494	2,437,540	-	2,517,034	2,440,209
Externally restricted	-	43,357	30,085	-	-	-	73,442	65,462
	1,021,987	43,357	30,085	79,494	2,437,540	-	3,612,463	3,451,824
	\$ 1,170,331	\$ 43,939	\$ 36,555	\$ 83,753	\$ 2,437,540	\$ -	\$ 3,772,118	\$ 3,626,572

ON BEHALF OF THE BOARD

Director

Director

The accompanying notes are an integral part of the financial statements

BETHANY CHAPEL OF CALGARY
Statement of Operations and Changes in Fund Balances
Year Ended December 31, 2023

	General Fund	Care Fund	Special Missions Fund	Capital Reserve Fund	Invested in Property and Equipment	New Initiatives Fund	2023	2022
REVENUES								
Contributions	\$ 1,065,328	\$ 76,669	\$ 8,114	\$ -	\$ -	\$ -	\$ 1,150,111	\$ 1,101,040
Other Revenue (Schedule 1)	450,082	-	-	-	-	-	450,082	386,795
Grants & subsidies	26,224	-	-	-	-	-	26,224	37,970
	<u>1,541,634</u>	<u>76,669</u>	<u>8,114</u>	<u>-</u>	<u>-</u>	<u>-</u>	<u>1,626,417</u>	<u>1,525,805</u>
EXPENSES								
Schedule of Operating Expenses (Schedule 3)								
Missionaries working with international organizations (Schedule 2)	1,144,972	2,048	-	15,195	-	-	1,162,215	1,084,479
Amortization of tangible assets	140,322	-	-	-	91,233	-	140,322	132,799
Pastoral care	2,280	50,824	-	-	-	-	91,233	84,378
Missions Trips	-	-	18,904	-	-	-	53,104	73,040
Building Renovations	-	-	-	-	-	-	18,904	12,804
	<u>1,287,574</u>	<u>52,872</u>	<u>18,904</u>	<u>15,195</u>	<u>91,233</u>	<u>-</u>	<u>1,465,778</u>	<u>1,388,416</u>
EXCESS (DEFICIENCY) OF OPERATIONS	<u>254,060</u>	<u>23,797</u>	<u>(10,790)</u>	<u>(15,195)</u>	<u>(91,233)</u>	<u>-</u>	<u>160,639</u>	<u>137,389</u>
TRANSFERS								
Allocation to other reserve funds (Note 7)	(178,226)	-	-	178,226	-	-	-	-
Capital expenditures	-	-	-	(152,572)	152,572	-	-	-
Allocation from Care fund	-	-	-	-	-	-	-	-
	<u>(178,226)</u>	<u>-</u>	<u>-</u>	<u>25,654</u>	<u>152,572</u>	<u>-</u>	<u>-</u>	<u>-</u>
NET EXCESS (DEFICIENCY) OF OPERATIONS AFTER TRANSFERS	<u>75,834</u>	<u>23,797</u>	<u>(10,790)</u>	<u>10,459</u>	<u>61,339</u>	<u>-</u>	<u>160,639</u>	<u>137,389</u>
FUND BALANCES - BEGINNING OF YEAR	<u>946,153</u>	<u>19,560</u>	<u>40,875</u>	<u>69,035</u>	<u>2,376,201</u>	<u>-</u>	<u>3,451,824</u>	<u>3,314,434</u>
FUND BALANCES - END OF YEAR	<u>\$ 1,021,987</u>	<u>\$ 43,357</u>	<u>\$ 30,085</u>	<u>\$ 79,494</u>	<u>\$ 2,437,540</u>	<u>\$ -</u>	<u>\$ 3,612,463</u>	<u>\$ 3,451,823</u>

The accompanying notes are an integral part of the financial statements

BETHANY CHAPEL OF CALGARY
Statement of Cash Flows
Year Ended December 31, 2023

	2023	2022
OPERATING ACTIVITIES		
Excess of operations	\$ 160,639	\$ 137,389
Item not affecting cash:		
Amortization of capital assets	91,233	84,378
	<u>251,872</u>	<u>221,767</u>
Changes in non-cash working capital:		
Accounts receivable	3,680	(4,739)
Interest receivable	(17,414)	(2,811)
Accounts payable and accrued liabilities	(6,182)	12,975
Prepaid expenses	350	3,925
Goods and services tax payable	2,094	(5,758)
Other current liabilities	(8,910)	2,653
	<u>(26,382)</u>	<u>6,245</u>
Cash flow from operating activities	<u>225,490</u>	<u>228,012</u>
INVESTING ACTIVITY		
Purchase of capital assets	<u>(152,572)</u>	<u>(264,238)</u>
Cash flow used by investing activity	<u>(152,572)</u>	<u>(264,238)</u>
FINANCING ACTIVITY		
Long Term Debt	<u>-</u>	<u>(60,000)</u>
Cash flow from (used by) financing activity	<u>-</u>	<u>(60,000)</u>
INCREASE (DECREASE) IN CASH FLOW	72,918	(96,226)
Cash and cash equivalents - beginning of year	<u>1,210,391</u>	<u>1,306,617</u>
CASH AND CASH EQUIVALENTS - END OF YEAR	\$ 1,283,309	\$ 1,210,391

BETHANY CHAPEL OF CALGARY
Notes to Financial Statements
Year Ended December 31, 2023

1. VISION OF THE CHAPEL

Bethany Chapel of Calgary ("the Church") is an independent local church whose vision is to "Open Doors to God's Truth and Love". In order to accomplish this goal the Church offers various church services and programs for children, young people, adults, and senior citizens and provides support to a number of missionaries and missions programs. In an effort to meet the needs of its immediate community, the Church operates a preschool program for three and four year old children, and offers Parish Nursing services to those requiring assistance.

The Church was incorporated in 1951 under the Religious Societies' Land Act of the province of Alberta. The Church is registered under the Income Tax Act as a charitable organization and accordingly is authorized to issue donation receipts.

The ongoing operations of the Church are dependent upon the continued donation support of those interested.

2. ACCOUNTING POLICIES

Financial statements are prepared on the assumption that the entity is a going concern, meaning it will continue in operation for the foreseeable future and will be able to realize its assets and discharge its liabilities in the normal course of operations. Management is required to assess whether there are any events or conditions that may cast significant doubt upon the entity's ability to continue as a going concern. Management is not aware of any such material uncertainties; accordingly these financial statements have been prepared using the going concern assumption.

The financial statements were prepared in accordance with Canadian accounting standards for not-for-profit organizations and, in management's opinion, with consideration of materiality and within the framework of the following accounting policies:

Fund accounting

The Church uses the following funds for recording its operations:

The **General Fund** is the primary pool of funds that are used to carry on the church ministries, support missions and perform the administrative activities of Bethany Chapel. This fund is supported by unrestricted contributions from the congregation, revenue from parking and facility rentals and other unrestricted revenue, out of which the majority of missions support and expenses occur.

The **Care Fund** provides benevolent support to those in need within the church body and the community, through various forms of assistance together with Parish Nursing services. Many within Bethany support this fund through regular contributions to this fund.

The **Special Missions Fund** receives and disburses funds raised for Bethany Chapel's short-term mission experiences and other designated missions expenses approved by the Missions Committee. Restricted contributions for this purpose are reported in this fund. The administration of the distribution of the funds is the responsibility of the Missions Committee.

Each contribution designated towards such an approved trip will be used as designated with the understanding that when the need for short term mission programs funding has been met, or the program cannot be completed for any reason, as determined by the Missions Committee and the Deacons, the remaining funds will be used where needed the most. Generally, the excess funds will remain in the Special Missions Fund for funding future programs; however the Missions Committee and the Deacons have the discretion to distribute funds from the Special Missions Fund to the General Fund should the need arise.

(continues)

BETHANY CHAPEL OF CALGARY
Notes to Financial Statements
Year Ended December 31, 2023

2. ACCOUNTING POLICIES *(continued)*

The **New Initiatives Fund** represents the accumulation of surplus funds, including contributions from estates, which have been set aside for special projects and opportunities as may be directed by the Elders after consultation with the Deacons. Restricted contributions for this purpose are reported in this fund. Interest income earned on investments in the fund is used for General Fund purposes.

The **Capital Reserve Fund** accumulates through a regular allocation of 8% from the General Fund contributions, as well as from specific contributions towards capital projects such as the Thanksgiving Offering and other designated contributions. The fund is intended to be used for renovations, repairs, and equipment replacement. Unused funds may be released from this internal restriction by a decision of the Deacons.

Financial instruments

Financial instruments are recorded at fair value when acquired or issued. In subsequent periods, financial assets with actively traded markets are reported at fair value, with any unrealized gains and losses reported in income. All other financial instruments are reported at amortized cost, and tested for impairment at each reporting date. Transaction costs on the acquisition, sale, or issue of financial instruments are expensed when incurred.

The organization's financial instruments consist of cash and cash equivalents, accounts receivable, interest receivable, accounts payable and accrued liabilities and unearned revenues.

Cash and cash equivalents

Cash and cash equivalents are recorded at cost and include cash in the bank and short-term investments convertible to cash with original maturities of less than 1 year or cashable at any time. Due to the short term maturities of the investments, cost is considered to be equivalent to fair value.

Capital assets

Capital assets are stated at cost or deemed cost less accumulated amortization. Contributed capital assets are recorded at fair value at the date of contribution. Where the asset donated is not subject to amortization, the value of the donation is added directly to the Investment in Capital Assets, and is not included in the statement of operations. Capital assets are amortized over their estimated useful lives on a declining balance basis at the following rates and methods:

Buildings	4%
Furnishings, computers and equipment	20%
Sound equipment	10%

The Church regularly reviews its capital assets to eliminate obsolete items.

Capital assets acquired during the year but not placed into use are not amortized until they are placed into use.

(continues)

BETHANY CHAPEL OF CALGARY
Notes to Financial Statements
Year Ended December 31, 2023

2. ACCOUNTING POLICIES *(continued)*

Impairment of long lived assets

The Church tests for impairment whenever events or changes in circumstances indicate that the carrying amount of the assets may not be recoverable. Recoverability is assessed by comparing the carrying amount to the projected future net cash flows the long-lived assets are expected to generate through their direct use and eventual disposition. When a test for impairment indicates that the carrying amount of an asset is not recoverable, an impairment loss is recognized to the extent the carrying value exceeds its fair value.

Revenue recognition

The Church follows the restricted fund method of accounting for contributions under which contributions received which have been restricted to be used for specific approved purposes are accounted for in the fund corresponding to the purpose.

Restricted contributions for which no corresponding restricted fund is presented must be recognized in the General Fund using the deferral method.

Unrestricted contributions are recognized as revenue in the General Fund.

Grants and subsidies are recognized as revenue when received or receivable.

Rental revenue, parking pass income and other revenues are recognized as revenue in the period in which it is earned.

Investment income is recorded as earned and includes fair value adjustments to financial assets.

Non-cash contributions, such as shares and materials are recorded at their estimated fair value which is the same as the amount for which a donation receipt has been issued.

Use of estimates

The preparation of financial statements in accordance with Canadian generally accepted accounting principles requires management to make estimates and assumptions that affect the reported amount of assets and liabilities, and disclosure of contingent assets and liabilities, at the date of the financial statements, and the reported amount of revenues and expenses during the reporting period. These estimates are reviewed periodically, and, as adjustments become necessary, they are reported in earnings in the period in which they became known.

Significant estimates included in these financial statements include the useful life of and impairment of property and equipment and accrued liabilities.

Contributed services

During the year volunteers are required to assist the Church in conducting its programs. Because of the difficulty of determining the number of hours provided and their fair value, the value of donated services is not recognized in the financial statements.

Allocation of expenses

The Church presents its expenses on a functional basis including Ministries, Facilities and Administration. Costs directly related to those functions are allocated to the specific function. Costs not directly related to Ministries or Facilities are included in Administration.

BETHANY CHAPEL OF CALGARY
Notes to Financial Statements
Year Ended December 31, 2023

3. FINANCIAL INSTRUMENTS

The Church has the following financial instruments reported in its balance sheet: cash and cash equivalents (including GIC investments), accounts and interest receivable, and accounts payable. All financial instruments are recorded at amortized cost due to the short time over which they will be converted to cash.

Unless otherwise noted, it is management's opinion that the Church is not exposed to significant interest, currency or credit risks arising from these financial instruments.

4. CASH AND CASH EQUIVALENTS

	2023	2022
Cash in bank	\$ 483,309	\$ 360,391
GIC investments	800,000	850,000
	\$ 1,283,309	\$ 1,210,391

The Church's cash consists of cash held in a chequing account and cash invested in Cashable Guaranteed Investment Certificate which have a maturity date of one year or less. The annualized rates of interest of the GIC range from 4.25% to 4.55% (2022: 1.00% to 3.20%). Early withdrawal of amounts from certain of the GIC's result in the loss of a portion of accumulated interest income.

The Church is subject to interest rate risk on the interest earning portion of its cash and cash equivalents to the extent that interest rates fluctuate while holding the investments, but is not considered significant.

5. CAPITAL ASSETS

	Cost	Accumulated amortization	2023 Net book value	2022 Net book value
Land	\$ 1,012,233	\$ -	\$ 1,012,233	\$ 1,012,233
Buildings	3,082,219	1,785,586	1,296,633	1,250,058
Furnishings, computers and equipment	1,114,013	1,064,618	49,395	25,822
Sound equipment	190,820	111,541	79,279	88,088
	\$ 5,399,285	\$ 2,961,745	\$ 2,437,540	\$ 2,376,201

6. EMPLOYEE PENSION PLAN

The Church established a group registered retirement savings plan for its salaried employees. The plan is a defined contribution plan and consequently there is no unfunded pension liability outstanding.

The Church's contribution to the pension plan totalled \$28,192 (2022: \$28,015) and is included in aggregate salaries and benefits for Ministries, Facilities and Administration of \$807,460 (2022: \$786,289).

BETHANY CHAPEL OF CALGARY
Notes to Financial Statements
Year Ended December 31, 2023

7. CAPITAL RESERVE FUND

The Capital Reserve Fund is an internally restricted fund administered at the discretion of the Deacons, to provide for renovations, repairs and equipment replacement as needed by the Church. The Fund is supported by the following:

An internal allocation of 8% (amounting to \$85,226 (2022: \$77,023) of annual contributions received in the General Fund for operations. This was recorded as an inter-fund transfer from the General Fund for building renovations and maintenance.

In addition, \$93,000 of the 2022 surplus was transferred to the Capital Reserve Fund. This was recorded as an inter-fund transfer from the General Fund.

BETHANY CHAPEL OF CALGARY
Schedule of Other Revenue
Year Ended December 31, 2023

(Schedule 1)

	2023	2022
Other Revenue		
Facility rentals	\$ 148,630	\$ 108,645
Interest	34,222	6,911
Parking pass income	218,519	209,360
Programs and events	26,550	19,616
Preschool	18,981	19,867
CEBA Loan forgiveness	-	20,000
Youth	3,180	2,396
	\$ 450,082	\$ 386,795

Schedule of Missionary Support
Year Ended December 31, 2023

(Schedule 2)

	2023	2022
Missionary Support		
Missionaries working with international organizations	\$ 104,849	\$ 95,400
Local missions	34,304	37,240
Projects and missions conference	1,169	159
	\$ 140,322	\$ 132,799

BETHANY CHAPEL OF CALGARY
Schedule of Operating Expenses
Year Ended December 31, 2023

(Schedule 3)

	2023	2022
Ministries		
Salaries & benefits	\$ 391,193	\$ 452,300
Christian education	26,752	24,698
Evangelism	29,427	22,713
Youth	16,620	14,545
Worship	12,792	17,096
Ministries total	476,784	531,352
Preschool		
Salaries & benefits	21,656	43,753
Program	760	1,733
Preschool total	22,416	45,486
Facilities		
Salaries & benefits	112,367	110,696
Building repairs and maintenance	37,899	36,588
Insurance	25,724	23,343
Utilities	59,932	48,870
Facilities total	235,922	219,497
Administration		
Salaries & benefits	303,900	223,293
Finance & banking	24,771	28,185
Office & other	98,422	36,666
Administration total	427,093	288,144
Grand Total	\$ 1,162,215	\$ 1,084,479

2024 PROPOSED BUDGET

Bethany Chapel of Calgary

DRAFT 11

General Fund

Comparison of Proposed 2024 Budget to 2023 Actual Results and 2023 Budget

	2024 Budget	Change vs 2023 Actual	2023		2022		2021		2020		2019	
			Actual	Budget	Actual	Budget	Actual	Budget	Actual	Budget	Actual	Budget
Revenues												
Contributions	1,225,000	15%	1,065,438	1,050,000	962,871	1,000,000	949,922	1,000,000	917,446	1,000,000	990,505	950,000
Gain/Loss Shares	-	-100%	(111)	-	(88)	-	33	-	(47)	-	(47)	-
Care Fund allocation	-	0%	-	-	-	-	7,500	-	-	-	-	-
Capital Fund allocation	(98,000)	15%	(85,226)	(84,000)	(77,023)	(80,000)	(75,996)	(80,000)	(73,392)	(80,000)	(59,234)	(57,000)
Kingdom Friendships allocation	1,127,000	0%	-	-	-	-	-	-	-	-	(19,745)	(19,000)
		15%	980,101	966,000	885,761	920,000	881,459	920,000	844,007	920,000	911,479	874,000
Other Revenue												
Facility Rentals	114,000	-23%	148,630	5,200	108,645	54,000	56,092	36,000	46,520	96,000	97,904	76,000
Interest Income, Cost Recovery, Grants & Misc.	24,720	-29%	34,942	103,000	26,737	4,300	165,789	8,500	290,930	8,260	10,502	5,950
Parking Permit Sales	219,000	0%	218,519	210,200	209,360	186,700	100,668	88,148	89,695	198,800	201,246	190,000
Youth Activities and Retreats	17,100	438%	3,180	100	2,396	1,450	1,450	1,000	-	1,000	1,197	1,000
Children's Ministry	12,600	-7%	13,590	9,500	9,457	4,200	2,850	1,400	-	3,200	2,145	900
Christian Education	100	-24%	131	3,600	199	-	1,823	240	117	1,080	1,131	660
Ministry & Outreach	9,900	-18%	12,109	8,580	9,337	13,750	2,231	14,150	7,395	30,650	21,486	21,000
Preschool	-	-100%	45,205	35,500	58,634	64,965	55,938	47,180	31,661	56,820	31,661	60,761
	397,420	-17%	476,307	375,680	424,765	329,365	386,841	196,618	466,317	395,810	367,272	356,271
Revenue Available For Operations	1,524,420	5%	1,456,407	1,341,680	1,310,526	1,249,365	1,268,300	1,116,618	1,310,324	1,315,810	1,278,751	1,230,271
Expenses												
Missions	195,750	40%	140,322	157,500	132,799	155,040	139,151	154,540	139,138	154,570	144,709	153,336
Other Expenses												
Staffing & Benefits (not including Preschool)	936,653	16%	807,816	832,202	786,289	800,430	787,681	809,897	777,780	831,811	746,217	777,171
Building, Maintenance and Insurance	129,900	5%	123,555	115,063	108,801	106,701	90,642	111,020	93,796	109,220	105,501	117,025
Other, Office, Telephone, Finance	125,280	16%	107,998	103,560	64,851	65,100	55,387	75,100	54,321	83,123	72,766	71,385
Christian Education	150	-81%	779	1,080	442	3,520	4,446	1,800	888	2,040	1,803	2,280
Ministry & Outreach	35,380	20%	29,427	28,950	22,713	28,600	7,029	29,800	10,838	42,055	30,557	35,510
Worship	16,300	27%	12,792	15,720	17,096	15,400	14,200	13,600	8,009	10,550	6,106	9,050
Youth	36,480	119%	16,620	21,600	14,545	11,860	9,326	11,545	4,077	11,545	7,573	12,700
Children's Ministry	28,240	9%	25,848	31,500	24,256	10,660	5,666	2,710	1,468	13,746	13,080	15,970
Preschool (includes payroll)	-	-100%	22,416	34,505	45,486	52,054	63,665	56,606	35,591	57,150	60,022	60,768
	1,308,383	14%	1,147,252	1,184,180	1,084,478	1,094,325	1,038,043	1,112,078	986,768	1,161,240	1,043,626	1,101,859
Total Cash Expenses	1,504,133	17%	1,287,574	1,341,680	1,217,278	1,249,365	1,177,194	1,266,618	1,125,906	1,315,810	1,188,335	1,255,196
Excess (deficiency) of revenues over cash expenses	20,287	-88%	168,834	0	93,248	0	91,106	(150,000)	184,418	(0)	90,416	(24,925)
Amortization Expense	-		-	-	-	-	-	-	83,751	76,000	71,486	78,900
Excess (deficiency) of revenues over total expenses	20,287	-88%	168,834	0	93,248	0	91,106	(150,000)	100,667	(76,000)	18,930	(103,825)
Net increase (decrease) in cash	20,287		168,834		93,248							
General Fund:												
Net Assets Beginning of the Year	1,164,031	17%	995,197	995,197	901,949	901,949	810,843	810,843	626,426	626,426	536,010	536,010
Excess (deficiency) of revenues over expenses	20,287	-88%	168,834	0	93,248	0	91,106	(150,000)	100,667	(76,000)	18,930	(103,825)
Allocations to/from Other Funds	-	#DIV/0!	-	-	-	-	-	-	-	-	-	-
Amortization expense, allocate to prop & equip	-	#DIV/0!	-	-	-	-	-	-	-	-	-	-
General Fund - end of year	1,184,318	2%	1,164,031	995,198	995,197	901,950	901,949	660,844	810,843	626,425	626,426	511,085

Bethany Chapel of Calgary

DRAFT 11

Proposed Budget - Statement of Operations and Changes in Fund Balances
For the Year Ending December 31, 2024

2024 Budget – Funds

	General Fund	Care Fund	New Initiatives Fund	Special Missions Fund	Capital Reserve Fund	Property and Equipment	Total
Fund balances, beginning of year (estimated)	1,114,987	43,357	-	30,085	(13,506)	2,257,680	3,432,602
Revenues							
Contributions	1,225,000	60,000	-	-	-	-	1,285,000
Anniversary Offering					-		-
Anniversary Offering Allocations					-		-
Other	397,420	-					397,420
	<u>1,622,420</u>	<u>60,000</u>	<u>-</u>	<u>-</u>	<u>-</u>	<u>-</u>	<u>1,682,420</u>
Expenses							
Staffing	936,653						936,653
Missions	195,750		-	-			195,750
Pastoral Care		105,769					105,769
Building, Office, CE, Youth, Children's, Preschool, O&E	371,730						371,730
Capital – Operating expenses					62,000		62,000
Allocation from Surplus							-
Amortization							-
Total Expenses	<u>1,504,133</u>	<u>105,769</u>	<u>-</u>	<u>-</u>	<u>62,000</u>	<u>-</u>	<u>1,671,902</u>
Change in fund balances during the year	118,287	(45,769)	-	-	(62,000)	-	10,518
Allocation to Capital Reserve Fund (8%)	(98,000)				98,000		-
Allocation to KF - SFM Fund							-
Transfer from General Fund	(19,477)			19,477			-
Capital - Property and Equipment					(47,000)	47,000	-
Allocation of funding for programs							-
Fund balances, end of year	<u>1,115,797</u>	<u>(2,413)</u>	<u>-</u>	<u>49,561</u>	<u>(24,506)</u>	<u>2,304,680</u>	<u>3,443,120</u>

2023 Actual - Funds

	General Fund	Care Fund	New Initiatives Fund	Special Missions Fund	Capital Reserve Fund	Property and Equipment	Total
Fund balances, beginning of year	946,153	19,560	-	40,875	69,035	2,196,340	3,271,963
Revenues							
Contributions	1,065,327	76,669	-	8,114			1,150,110
Anniversary Offering					-		-
Anniversary Offering Allocation		-			-		-
Other	476,307						476,307
Total Revenues	<u>1,541,634</u>	<u>76,669</u>	<u>-</u>	<u>8,114</u>	<u>-</u>	<u>-</u>	<u>1,626,417</u>
Expenses							
Staffing	807,816						807,816
Missions	140,322		-	18,904			159,227
Pastoral Care		52,872					52,872
Building, Office, CE, Youth, Children's, Preschool, O&E	339,435						339,435
Capital – Operating Expense					15,195		15,195
Amortization	-					91,233	91,233
Total Expenses	<u>1,287,574</u>	<u>52,872</u>	<u>-</u>	<u>18,904</u>	<u>15,195</u>	<u>91,233</u>	<u>1,374,546</u>
Change in fund balances during the year	254,060	23,797	-	(10,790)	(15,195)	(91,233)	251,871
Allocation to Capital Reserve Fund (8%)	(85,226)				85,226		-
Transfer to Capital Fund	-	-					-
Other transfers							-
Capital - Property and Equipment					(152,572)	152,572	-
Allocation of funding for programs	-						-
Fund balances, end of year	<u>1,114,987</u>	<u>43,357</u>	<u>-</u>	<u>30,085</u>	<u>(13,506)</u>	<u>2,257,680</u>	<u>3,432,602</u>

www.bethanychapel.com | 3333 Richardson Way SW



[bethanychapelofcalgary](https://www.facebook.com/bethanychapelofcalgary)



[bethanychapelcalgary](https://www.instagram.com/bethanychapelcalgary)



[BethanyChapelofCalgary](https://www.youtube.com/BethanyChapelofCalgary)