

# The TEAM

## Neurological Surgery

David Okonkwo, MD, PhD  
 Ava Puccio, PhD  
 Don Krieger, PhD  
 Steven Benso, RN, BSN  
 Kathryn Edelman, MS  
 Allison Borrasso, MS  
 Thomas Hahner, MS  
 Dana Williams, MS

## Psychiatry

Sue Beers, PhD  
 Lisa Morrow, PhD  
 Anne Germain, PhD  
 Robin Richardson, LCSW

## Centers for Rehab Services

Anne Mucha, DPT

## Orthopaedic Surgery

Michael Collins, PhD  
 Anthony Kontos, PhD  
 Jane Sharpless, MS

## Psychology

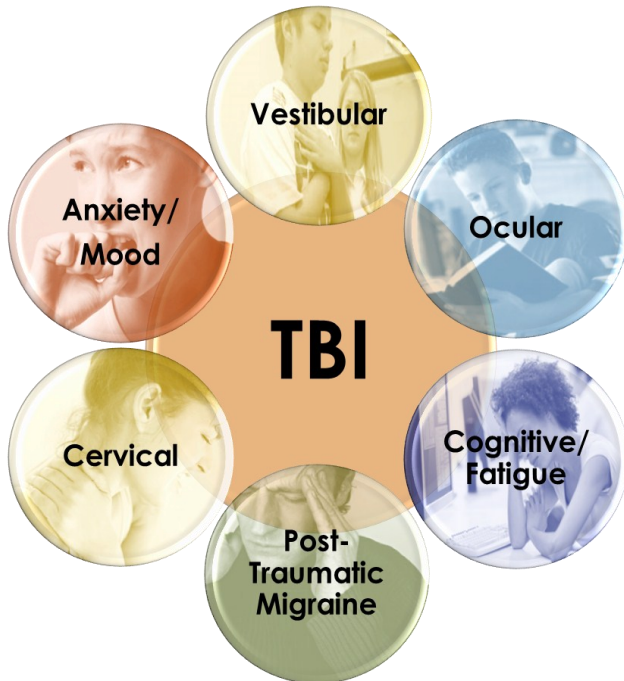
Walter Schneider, PhD  
 Nora Presson, PhD  
 Jon Chmura, BAsC  
 Daniel Pultz, USMC

## Radiology

Hoby Hetherington, PhD  
 James Mountz, MD, PhD  
 Chester Mathis, PhD

## Center Military

Medicine Research  
 Ronald Poropatich, MD



# TEAM TBI

A Research Project at the University of Pittsburgh



200 Lothrop St.  
 PUH Suite B-400  
 Pittsburgh, PA  
 15213

Phone: 412-383-TEAM (412-383-8326)

Fax: 412-383-8635

E-mail: TEAMTBI@upmc.edu

# TEAM TBI

Targeted  
Evaluation  
Action and  
Monitoring of

Traumatic  
Brain  
Injury

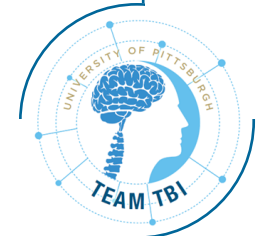


Figure courtesy of UPMC Sports Medicine Concussion Program  
 Collins MW, Kontos A, et al, *KSST*, 2014

(412) 383-TEAM  
 TEAMTBI@upmc.edu

## Traumatic Brain Injury: Definition

A traumatic brain injury (TBI) is a blow or jolt to the head that disrupts the normal function of the brain. The severity of TBI is determined at the time of the injury and may be classified as: mild, moderate, or severe.

## Common TBI Signs & Symptoms

- Headache
- Sleep Disturbances
- Dizziness
- Balance Problems
- Nausea/Vomiting
- Fatigue
- Visual Disturbances
- Light Sensitivity
- Sensitivity to Noise
- Slowed Thinking
- Poor Concentration
- Memory Problems
- Difficulty Finding Words
- Anxiety



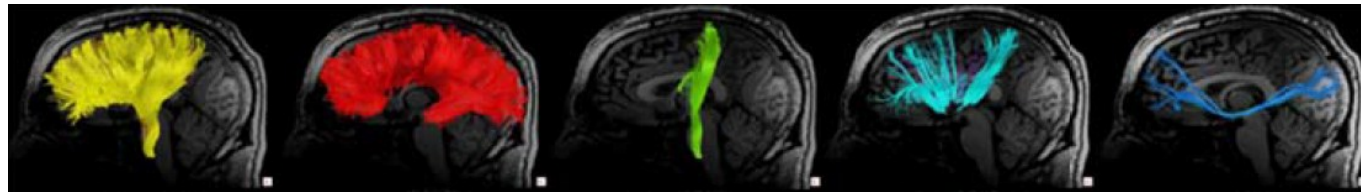
## What is TEAM TBI?

**TEAM TBI** is a federally-funded research study at the University of Pittsburgh that investigates the complexity of brain injury, and how targeted interventional strategies may improve outcome and function.

After a **3-day evaluation**, the study provides you with a customized Toolkit to complement your recommended plan, and follows you for 6 months. At the end of the follow-up period, you will return to the University of Pittsburgh for a repeat evaluation.

### Assessments include:

- \* High Definition MRI
- \* Concussion evaluation
- \* Sleep
- \* Balance
- \* Vision
- \* Memory
- \* Mood



## What's involved?

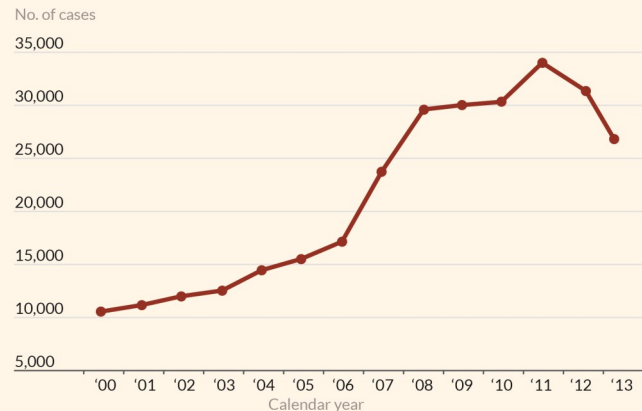
- **Comprehensive TBI evaluation**
- **Cutting Edge Brain Imaging**
- **Targeted recommendations**
- **6-Month follow-up period**
- **Specialized Toolkit**

## Do I qualify?

We are seeking military and civilian participants **18-60 years old** who have suffered a traumatic brain injury **more than 6 months ago**, and who are still experiencing symptoms related to TBI.

Subjects are compensated for participation.

### DoD Numbers for Traumatic Brain Injury Total Worldwide TBI Diagnoses



Source: Defense Medical Surveillance System (DMSS), Theater Medical Data Store (TMDS) provided by the Armed Forces Health Surveillance Center (AFHSC)

Prepared by MHS Office of Strategic Communications

2000-2013