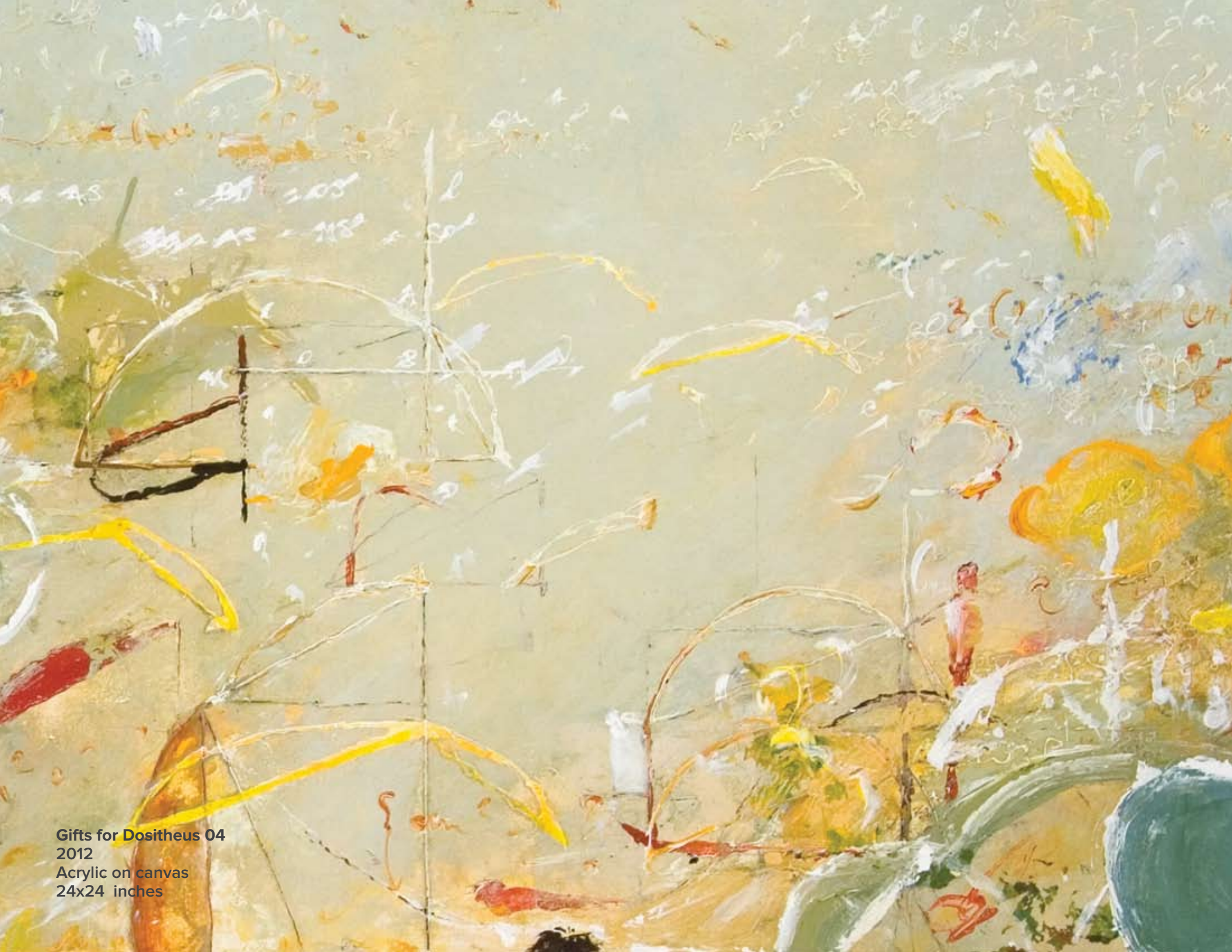


MICHAEL SCHULTHEIS

GARDENS OF ARCHIMEDES





Gifts for Dositheus 04
2012
Acrylic on canvas
24x24 inches

MICHAEL SCHULTHEIS

GARDENS OF ARCHIMEDES

September 12 – October 27, 2012

In the painterly world of Michael Schultheis, there is an inherent link between Abstract Expressionism and ancient Greek geometry. The path that Schultheis explores leads to a unique space where art and math meet; a place that examines and links both classical and contemporary concepts.

Using a conceptual and visual language, Schultheis renders his ideas in layers of acrylic paint, utilizing math from antiquity to explore geometric models of the emotional and physical world. Through his process we are prompted to think about the world in a different way and appreciate the interconnectedness of everything within the experience of life.

In *Gardens of Archimedes*, Schultheis explores the geometry of Greek mathematician Archimedes of Syracuse (c 287-212 B.C.) and transposes his ideas into a symbolic and visual language. These representative models are developed in each painting the same way the artist might tend a garden – thoughtfully and systematically.

For example, Archimedes employed a mathematical technique to approximate the ratio of pi (π), along with a method to calculate the length of arcs. Schultheis uses these equations in his work (the arc specifically) to try and understand basic human experiences such as the circular rhythm of breath and heartbeat and the historical [and romantic] concept of finding one's "other half," or soul mate.

Schultheis pays homage to the Hellenistic period in which Archimedes lived by utilizing the classical antiquity colors of ochre, vermilion and lapis lazuli. Schultheis also refers to the works in *Garden of Archimedes* as the "Circle of Life Paintings" not only due to the subject matter, but also because of the rich verdant palette.



www.winstonwachter.com

203 Dexter Avenue North
Seattle, WA 98109

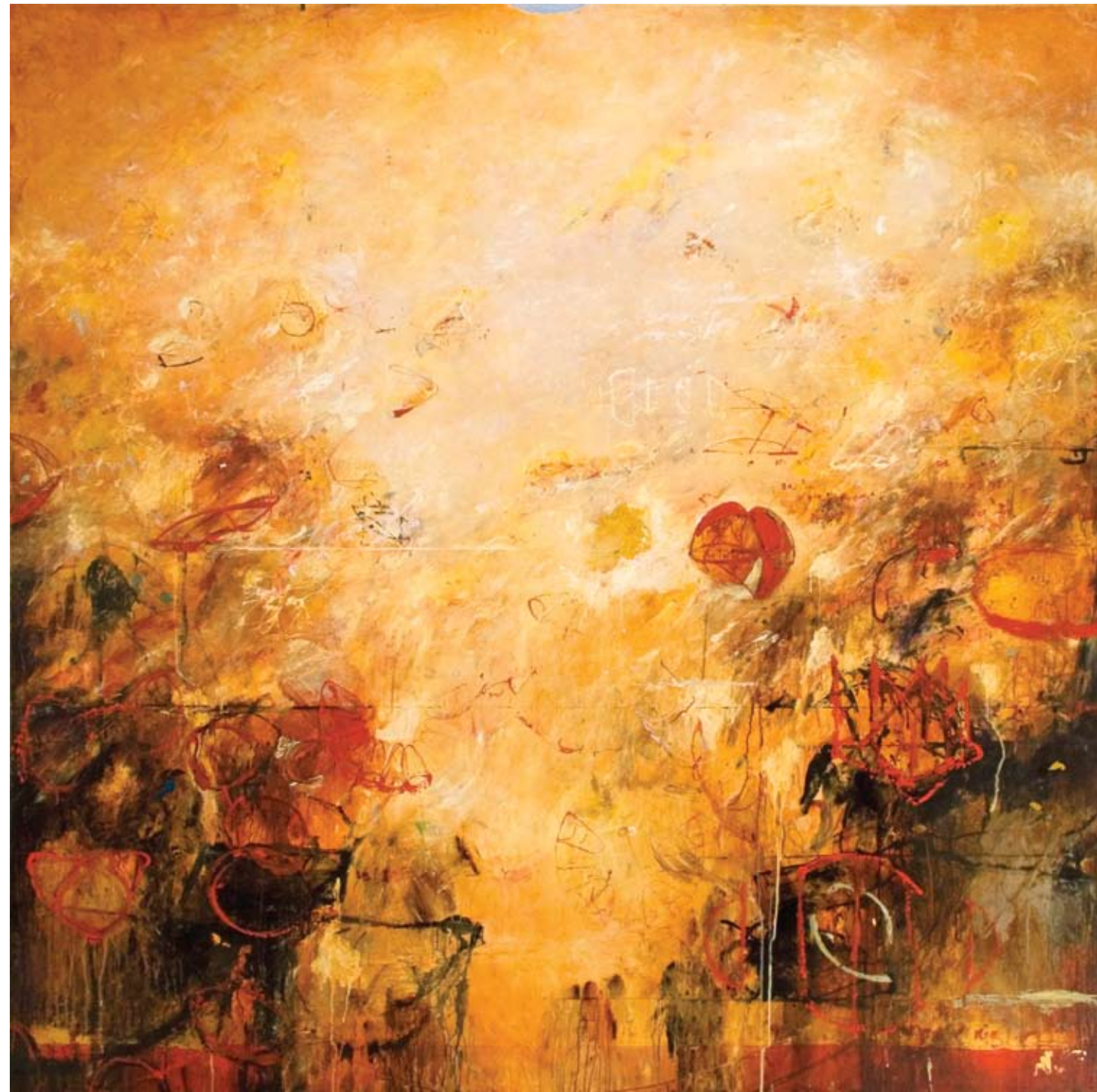
[tel] 206 652 5855
gallery@winstonwachter.com



Picots of Archimedes 01, 02
2012
Acrylic on canvas
30x60 inches



Seas of Archimedes 02
2012
Acrylic on canvas
36x48 inches



Oculus of Archimedes 01
2012
Acrylic on canvas
72x72 inches



Gardens of Archimedes 01
2012
Acrylic on canvas
48x96 inches



Archimedes Seasons 01
2012
Acrylic on canvas
48x48 inches



Seas of Archimedes 01
2012
Acrylic on canvas
48x48 inches



Breath of Hephaestus 01
2012
Acrylic on canvas
24x60 inches

Breath of Archimedes 01
2012
Acrylic on canvas
72x120 inches





Archimedes Seasons 03
2012
Acrylic on canvas
36x36 inches



Archimedes Palimpsest 01
2012
Acrylic on canvas
60x96 inches



Gardens of Archimedes 02
2012
Acrylic on canvas
48x60 inches

MICHAEL SCHULTHEIS

CORPORATE & PUBLIC COLLECTIONS

Citigroup, Seattle, WA
City of Seattle, Seattle, WA
Deloitte Touche Tohmatsu, Seattle, WA
Four Seasons Olympic Hotel, Seattle, WA
Howard Hughes Medical Institute, Washington, D.C.
Hyatt Regency, Bellevue, WA
M Financial Holdings Inc., Portland, OR
Madison Development, Seattle, WA
Martin Smith Corporation, Seattle, WA
The Mathematical Association of America, Washington D.C.
Maybelle Clarke MacDonald Fund, Portland, OR
Meriwether Group, Portland, OR
National Academy of Sciences, Washington, D.C.
Novo Nordisk, Seattle, WA
Oregon Health Sciences University, Portland, OR
Portable Works Collection, City of Portland, OR
Portland Community College, Portland, OR
Rainier Pacific Bank, Tacoma, WA
Ritz Carlton, New York, NY
Seattle Athletic Club, Seattle, WA
Schwabe, Williamson & Wyatt, Portland, OR
Swedish Medical Center, Seattle, WA
Tacoma Art Museum, Tacoma, WA
The United States Embassy, Athens, Greece
University of Washington Medical Center, Seattle, WA

EDUCATION

1993	M.S., Labor Economics, <u>Cornell University</u> , Ithaca, NY
1990	B.A., Honors Economics, <u>Washington State University</u> , Pullman, WA
1989	History and Italian, <u>Scuola Per Stranieri</u> , Siena, Italy



www.winstonwachter.com

203 Dexter Avenue North
Seattle, WA 98109

[tel] 206 652 5855
gallery@winstonwachter.com