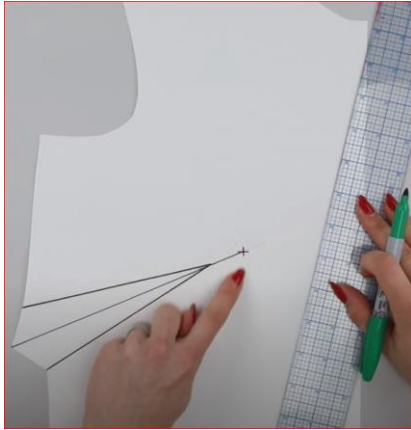
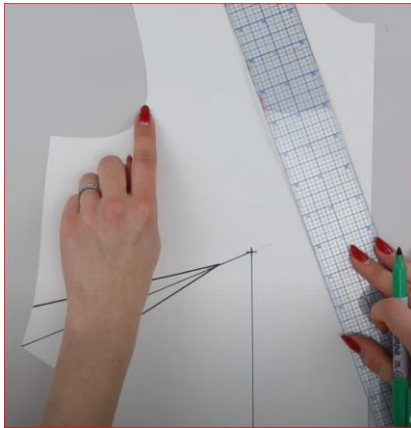


FULL BUST ADJUSTMENT STEPS



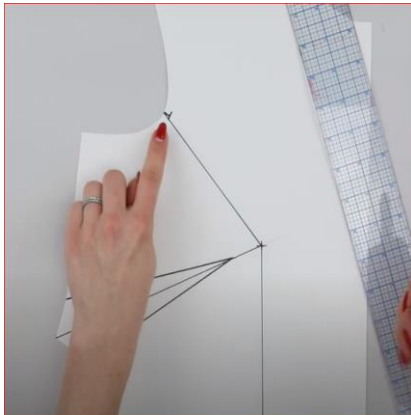
Locate bust point

Draw line in between center of dart to bust point

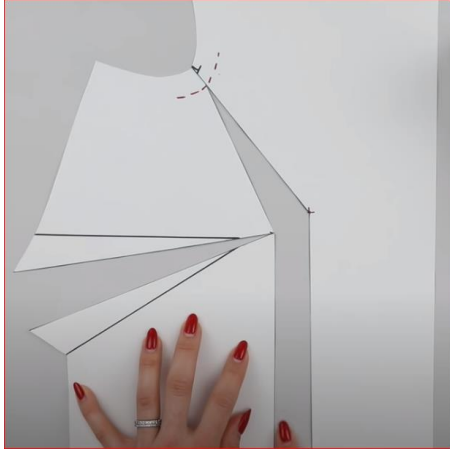


Draw line for armhole notch or approximately $\frac{1}{3}$ of the length of the armhole. Does not have to be exactly $\frac{1}{3}$.

Draw a line from bust point down to hem. Line needs to be parallel to the grain line.



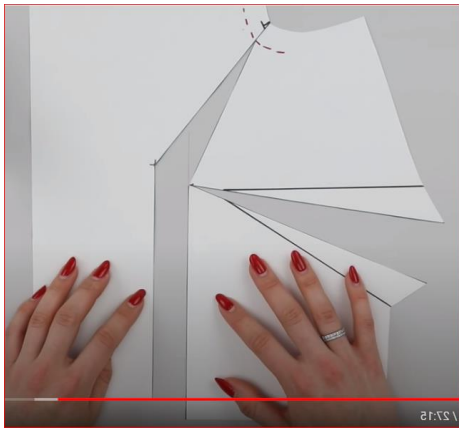
Mark seam allowance on armhole line.



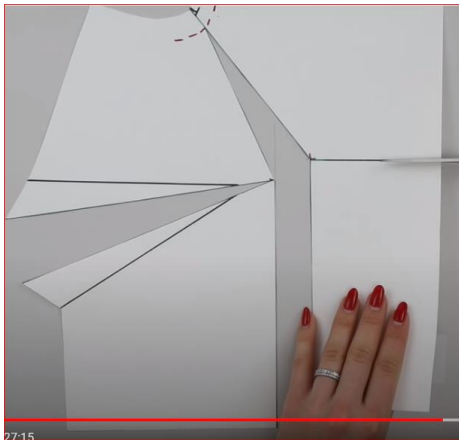
Cut the line from the hem up to armhole, stop at the seam allowance line. Do not cut through, we need to make a hinge.

Cut line from armhole from the outer side to where you stopped on the last cut. To cut but not through the seam allowance dotted line.

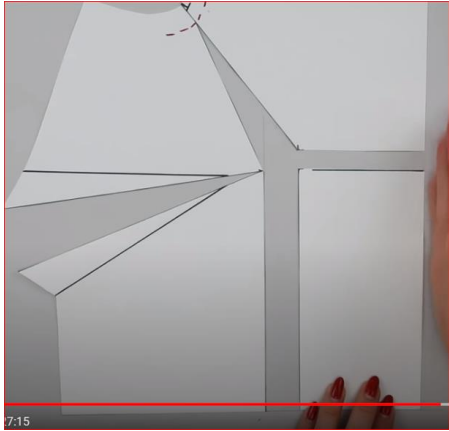
Cut through the dart line, to but not through the end point closest to the bust point.



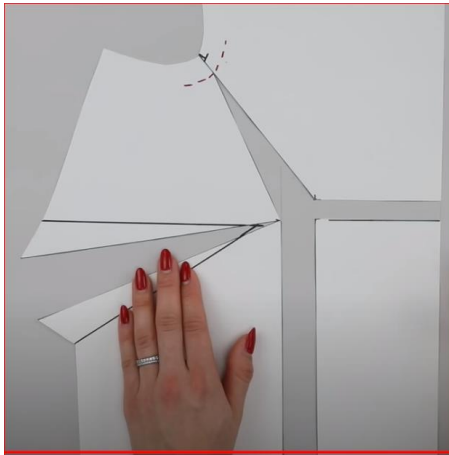
Pull the center line out as far as needed. The parallel lines need to stay straight when you finish.



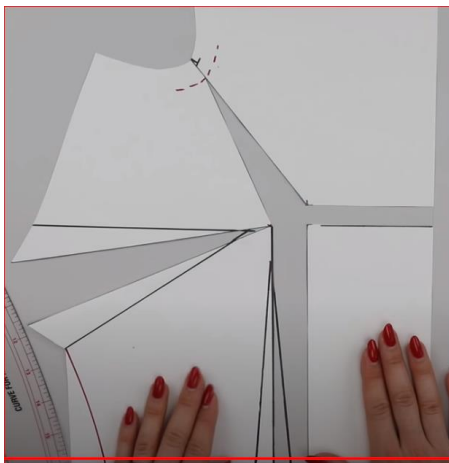
Draw and cut line horizontal line out from bust point to center front.



Drop down square on bottom right to be even with bottom left square at hem.



Draw out bust dart ends to position where you want it to fall.



You can add front darts if wanted. You can also take out bulk on sides and draw in a new side seam equal to the amount you added into the front to accommodate your larger bust.

