



**PLIANT CORPORATION™**

*Films. Packaging. Results.*

**CORPORATE LAB**

230 Enterprise Dr.  
Newport News, Virginia 23603

# **FINAL REPORT**

REQUEST NUMBER

**17248**

REQUESTED BY

**Bryn Rabort**

PREPARED AND REVIEWED BY

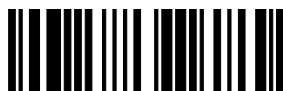
**Karen Carlton**

**Tuesday, November 15, 2005**

CORPORATE LAB MANAGER

**Raymond J. Orf**

The information in this report is intended for use by the report requester and the designated recipients. The data and conclusions within this report are considered confidential property of Pliant Corporation. While the information is accurate to the best of our knowledge and belief as of the date compiled, it is limited to the information specified. No representation or warranty, expressed or implied, is made regarding the information, or its completeness, merchantability or fitness for a particular use. The report recipients are responsible for all determinations regarding use and we disclaim liability for any loss or damage that may occur from the use of this information.





# Pliant Corporate Lab Report

## Request Summary

A work request was written on 11/08/2005 by Bryn Rabort

Lab request number 17248 was assigned to the work request

This report involves film produced for Inland Paper

The engineer assigned to this material is Bryn Rabort

In addition to the engineer, the following names have been added to the copy list:

StengF;

The Corporate Lab received samples on 11/08/2005 . The samples were identified as the following:

**\*Sample Name/ID                      Description**

A	Printed film	Printed film
*The samples are identified per the information given in the work request. If no identification was given a sample ID was assigned by lab personnel.		

The following types of tests were requested for the above samples

- Measurements
- Tensile Testing
- Optical Testing
- Surface Testing
- Impact Testing
- Peel Testing
- Aperture
- Other Physical Testing
- Permeability Testing (MOCON)
- Seal Testing
- Competitive Analysis
- Defect/Gel Analysis
- GC Analysis
- Other Testing



# Pliant Corporate Lab Report

## Analytical Results

Request Number 17248

Requester Bryn Raptor

---

### Printed film (A)

---

#### Sample Conclusion:

The sample appears to be an adhesive laminated PET//PE sealant web. The blend ratio is approximately 60% LLDPE and 40% LDPE. Slip is added to the sealant web

#### Cross Section Results:

Gauge - 4.40 mil

---

Layer Material	Layer %
PET	15
Adh (polyurethane)/ Print	3
LLDPE/LDPE blend + Slip	82

---

#### DSC Results:

Material	Tm °C	Tc °C
LDPE	104.8	92.5
LLDPE	119.8	106.8
	121.9	

---



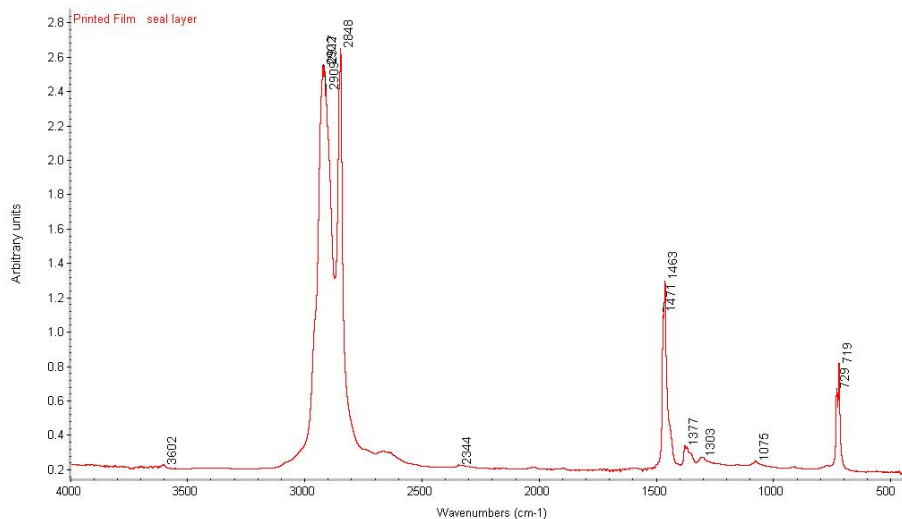
# Pliant Corporate Lab Report

## Image Index

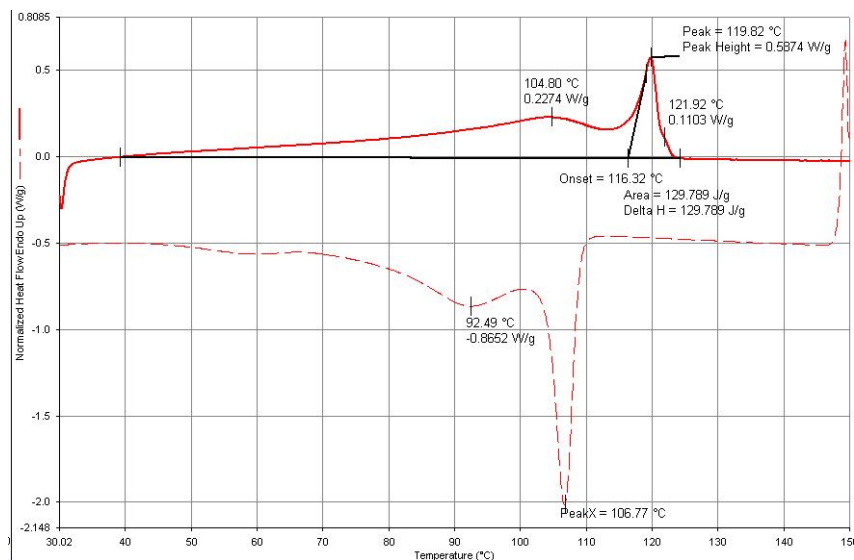
Request Number 17248

Requester Bryn Rabor

### transmission sealant web



### DSC sealant web





# Pliant Corporate Lab Report

## Image Index

Request Number 17248

Requester Bryn Rabor

---

### PET//PE sealant

