



THE WESTIN VERASA ART COLLECTION

The Westin Verasa Napa Residences, Napa, California

Published by
Chandra Cerrito / Art Advisors LLC
Napa, California
www.chandracerrito.com

© 2008

The Westin Verasa Art Collection

The art collection at The Westin Verasa Napa features some of the extraordinary artistic talent of the region and the nation. Most of the artists represented are from Napa, San Francisco, the East Bay and Marin, all of which surround the San Francisco Bay. Some have developed their work over more than two decades, are widely respected and collected nationally. Others are promising younger artists who have already enjoyed substantial success and recognition. The wide range of media represented includes photography, painting, sculpture, unique prints, custom limited edition prints and tapestries.

This collection is the result of a true collaboration among the hotel owners, their art advisor and the artists, with the important assistance of building architects, designers and contractors. It was the vision of Intrawest Placemaking and Starwood Hotels & Resorts to create a sophisticated art program that would complement the hotel's intent to provide what the Napa Valley fosters—a deep appreciation of nature, sensory connection and rejuvenation of spirit. Chandra Cerrito, principal of Chandra Cerrito / Art Advisors, located in Napa, worked closely with the owners to realize this vision by locating and commissioning unique artworks that echo the rich experience of being in the Napa Valley.



WESTIN
HOTELS & RESORTS









STARWOOD
PREFERRED
GUEST

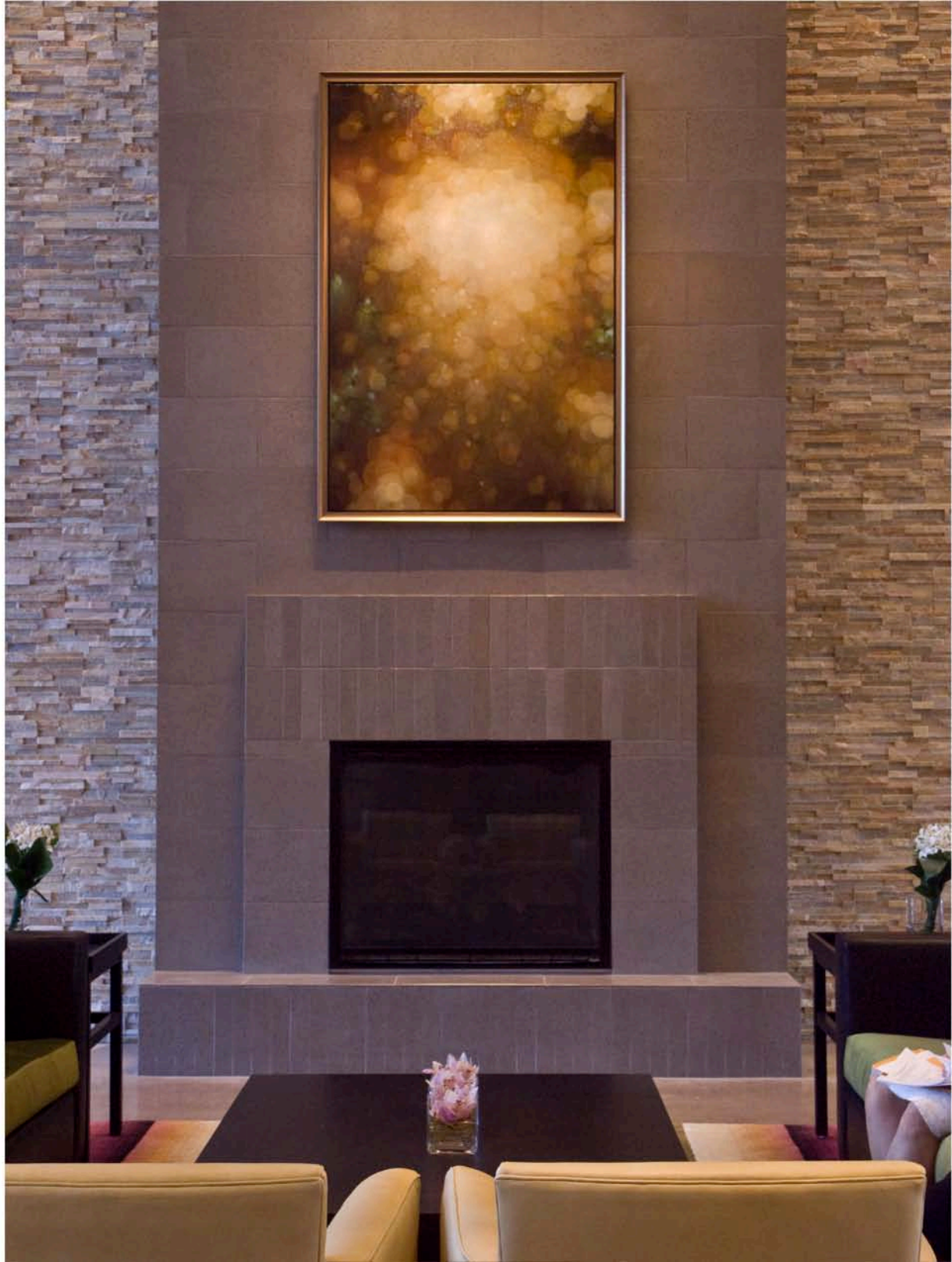
GOLD & PLATINUM
MEMBERS





La Jolla
MEETING →
ROOMS
GUESTROOMS →
1090-1100
NAM RIVER WALK →



















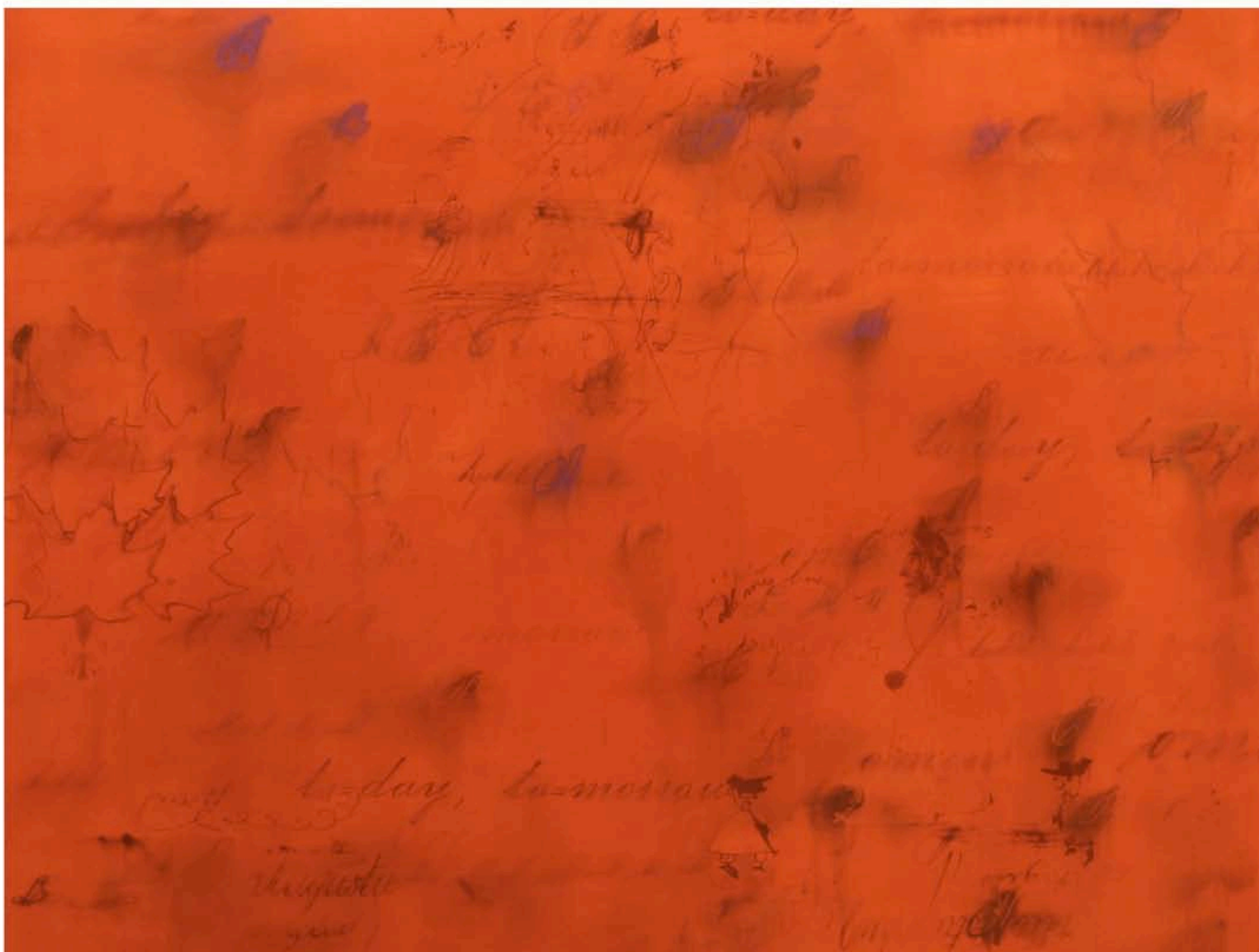


Artists & Artworks

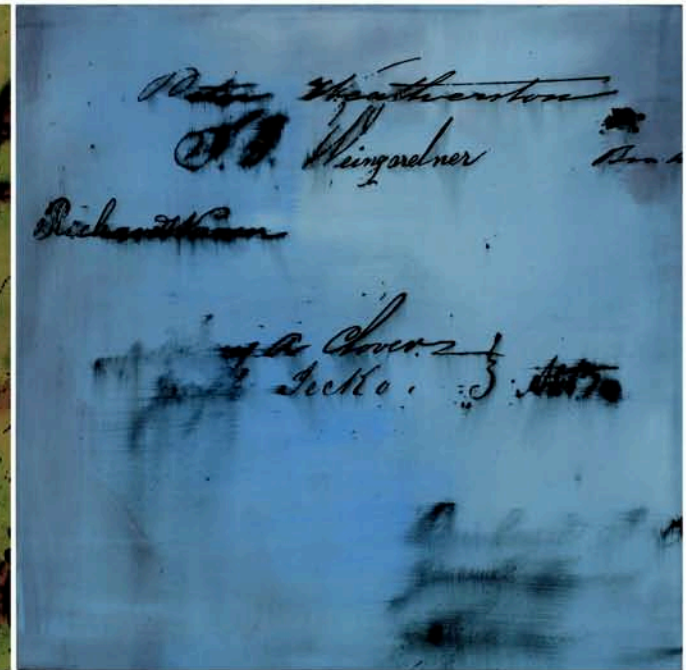
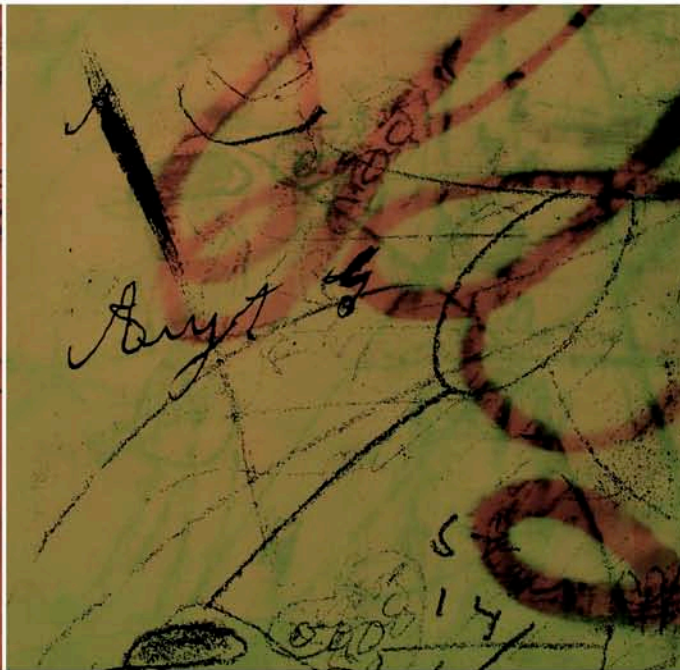
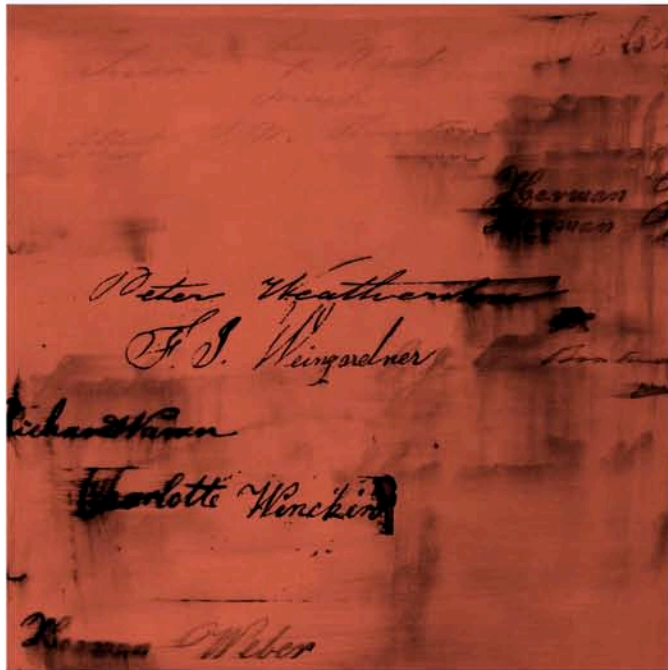
Catherine Courtenaye

20

Catherine Courtenaye is a resident of the East Bay, where she has her studio. She has exhibited extensively in galleries and museums nation-wide and is a recipient of the National Endowment for the Arts Individual Artist Grant and Ford Foundation Grants. Courtenaye's work is inspired by color field painting and Victorian handwriting, such as that found in bank ledgers, notebooks and personal letters she has located throughout the United States. She was originally drawn to the abstract beauty of the written word. After studying Victorian penmanship, she came to appreciate its implications of an individual's class and its evidence of the rigid social mandates of the time. Staying true to her abstract painting roots, though, the text incorporated into her paintings primarily contributes to the dreamlike, multilayered atmospheres of their visual compositions.



Catherine Courtenaye
Augusta
Oil on canvas, 60" x 72"
(Lobby, left of entrance)



Catherine Courtenaye
Logarithm Vermilion, Evens and Odds 7, Logarithm Powder Blue
 Oil on panel, 12" x 12" each
 (Lobby, right of entrance)

Stephen Galloway

Stephen Galloway lives in San Francisco and is the chair of the art department at Sonoma State University. He has had solo exhibitions at the San Jose Museum of Art, the Sonoma County Museum and the Center for Photographic Art in Carmel, CA. Primarily a photographer, Galloway creates compositions of found natural materials. These compositions range from structured geometries to those that feel like the randomness of a forest floors. His intention to see the physical reality of nature as it is, and to enable others to see it, is achieved through the extreme, almost hyper-real, clarity of his images. *Slumber*, created specifically for the Westin Verasa, is Galloway's first translation of his current photographic interests into a sculptural and architectural form.

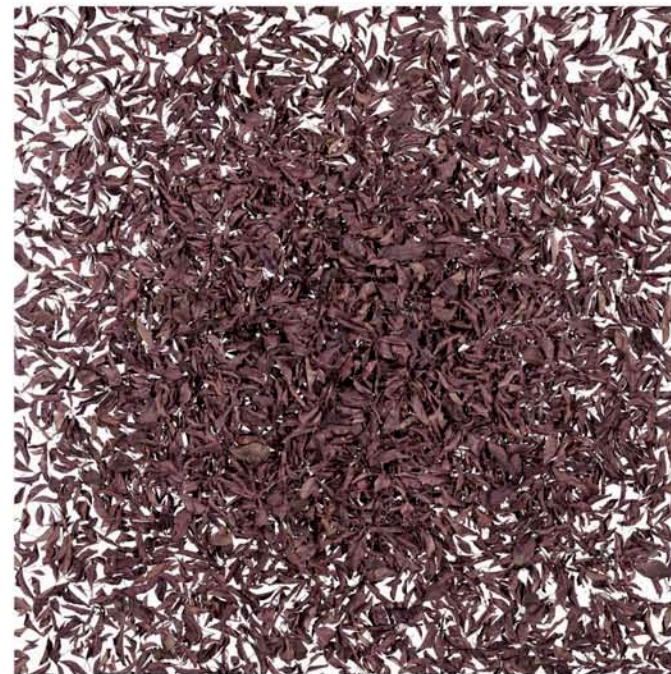




Stephen Galloway

Slumber

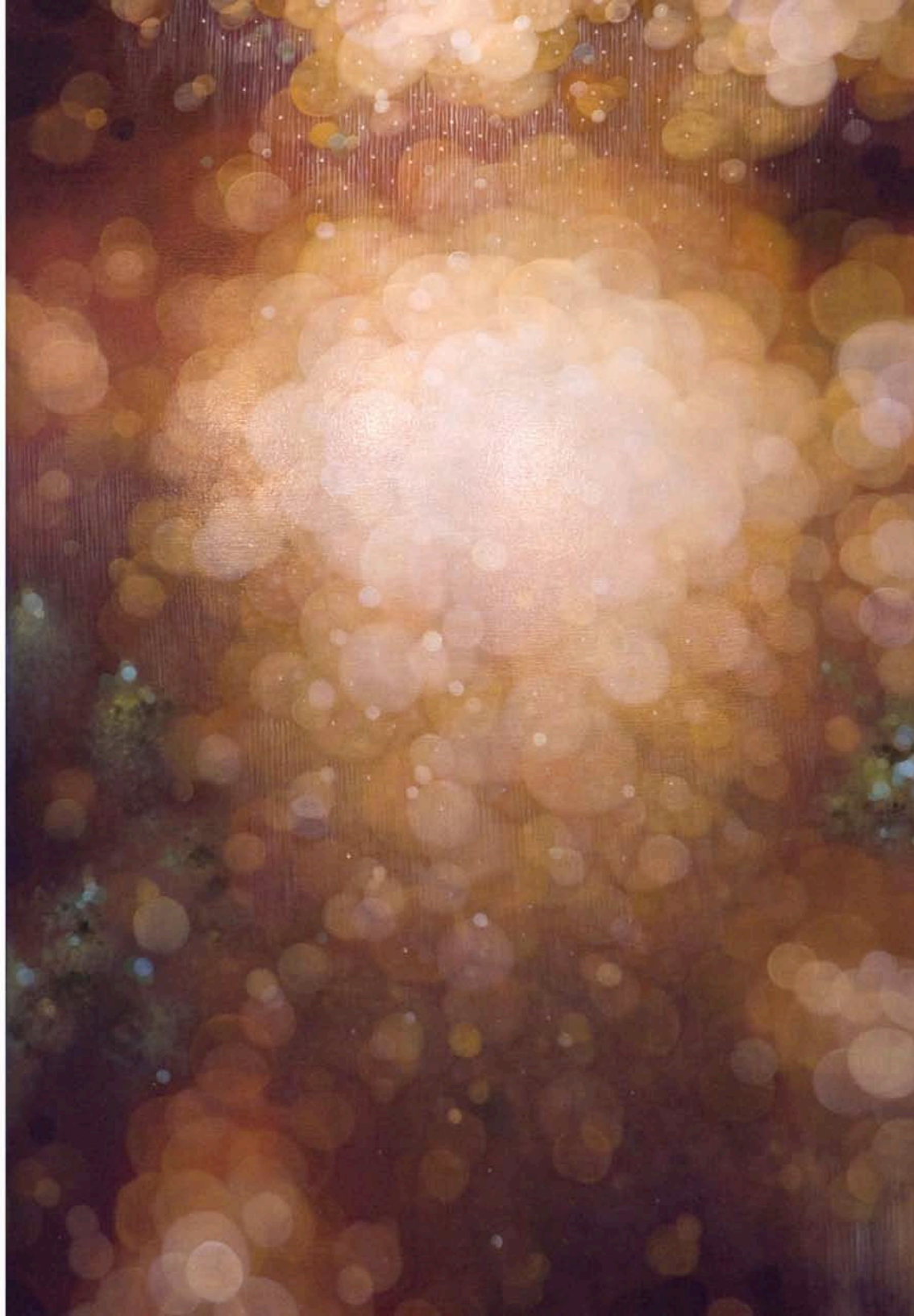
Polyurethane and embedded natural materials including leaves and acacia seed pods, 60" x 132" x 1.5"
(Lobby, in front of elevators)

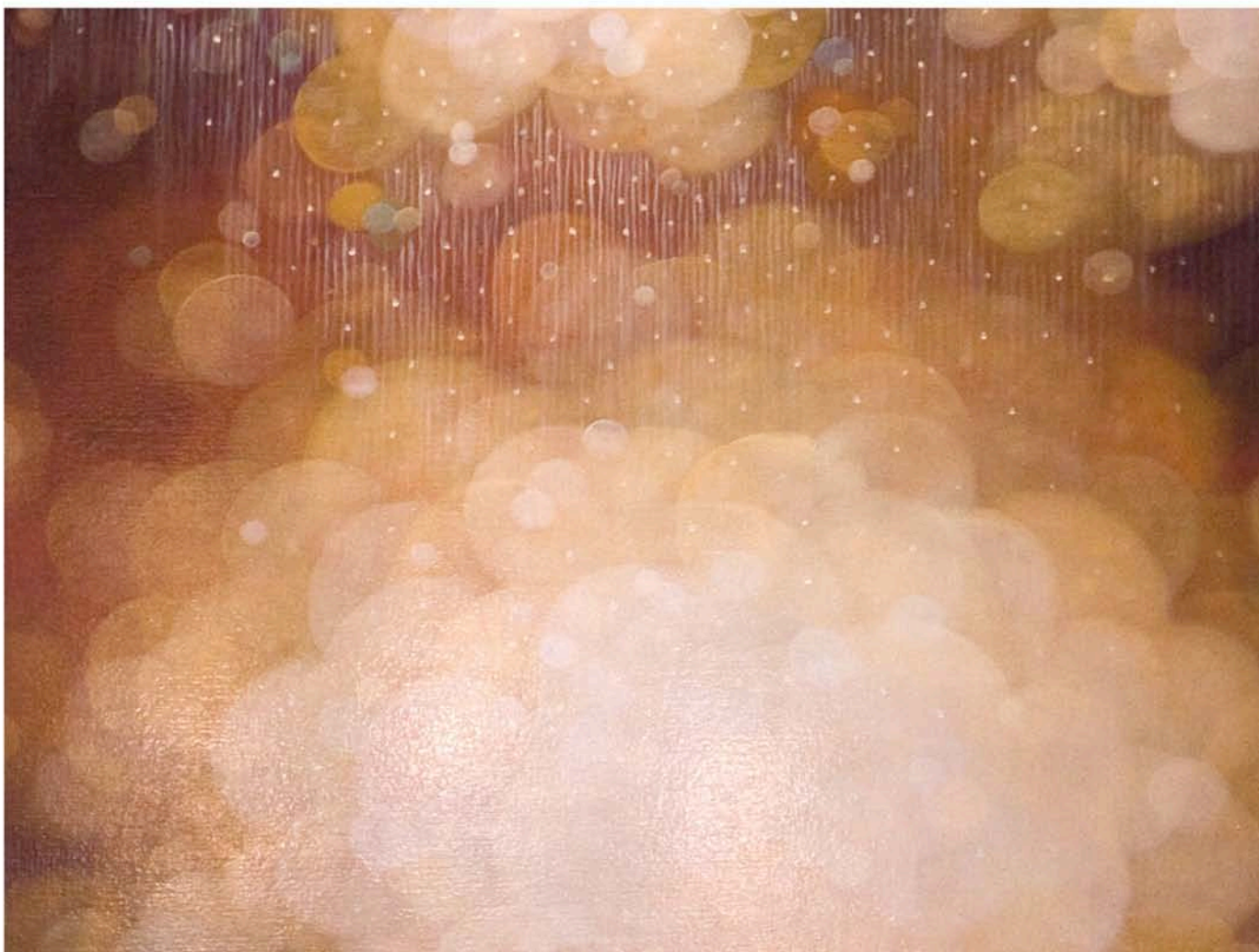


Stephen Galloway
Absentia, Tattoo, Cumulus
LightJet C-prints from scan-based images, 40" x 40"
(Corridor seen through lobby lounge)

Jenn Shifflet

Jenn Shifflet lives and works in the East Bay. She has received numerous honors including the Headlands Center for the Arts' Affiliate Artist Award and the Smithsonian Museum, Resident Associate Honors Award Scholarship. Her paintings have evolved in the last several years from almost monochromatic color fields that subtly reference natural phenomena to atmospheric environments populated by buoyant spheres. Light appears to emanate through the paintings' surfaces. With their organic references, yet lack of specificity of time, place and substance, Shifflet's paintings encourage personal recollection and contemplation.





Jenn Shifflet
Resplendant
Oil on canvas, 72" x 48"
(Lobby, above the fireplace)

Don and Era Farnsworth

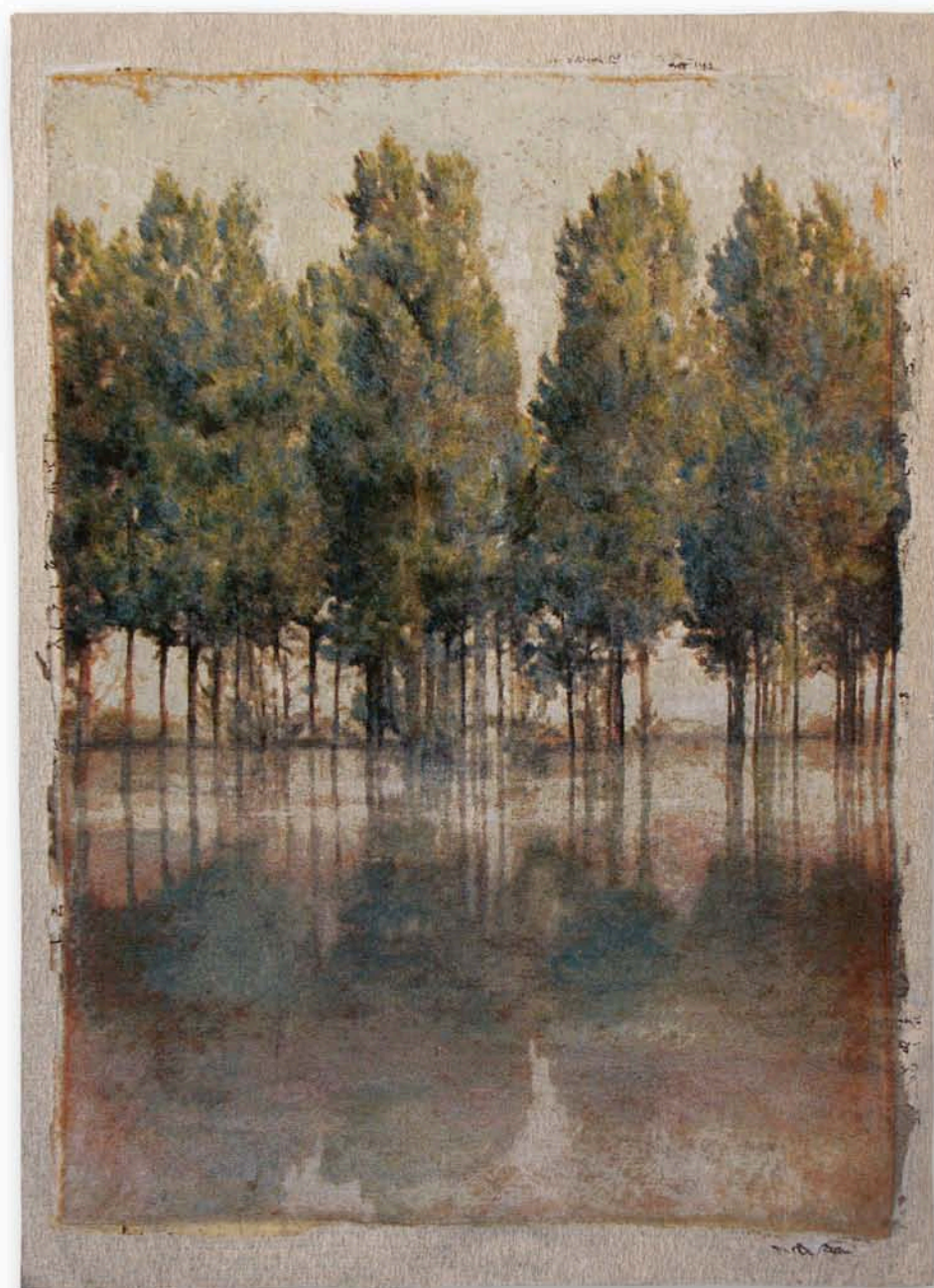
30

Don and Era Farnsworth are residents of the East Bay and since 1981 have been owners of an artist atelier in Oakland. Often working collaboratively, they explore images of nature, architecture and Buddhist iconography in a variety of media from handmade prints to Jacquard tapestries woven in Belgium.

Frequent travelers, the Farnsworths have lived, worked and taught in various corners of the globe, from Dar es Salaam, Tanzania and many locations in Europe, to the University of Hawaii in Honolulu.

Don and Era Farnsworth
Reflection Pool (Blue), River Reflection
"Tapestries, 74" x 55.5" and 72" x 52"

(Corridor, to the left of the lobby and corridor, outside the fitness center)



Lewis deSoto

32

A resident of Napa, Lewis deSoto is a professor of art at San Francisco State University. His wide range of artwork includes photography, digital drawings, sculpture, sound installations and public art. He has exhibited in galleries and museums throughout the United States and internationally. Some of his numerous public artworks can be seen at the San Francisco International Airport, the Phoenix Airport and the University of Texas, San Antonio. DeSoto's botanical photographs, taken with a 35 mm camera, capture the plants' movements in single extended exposures. These reflect his ongoing interest in the nature of observation and in using photography as a tool for paying attention.



Lewis deSoto
Botanica Variation.
Archival inkjet print 47.5" x 61"
(Hallway, lobby restrooms)

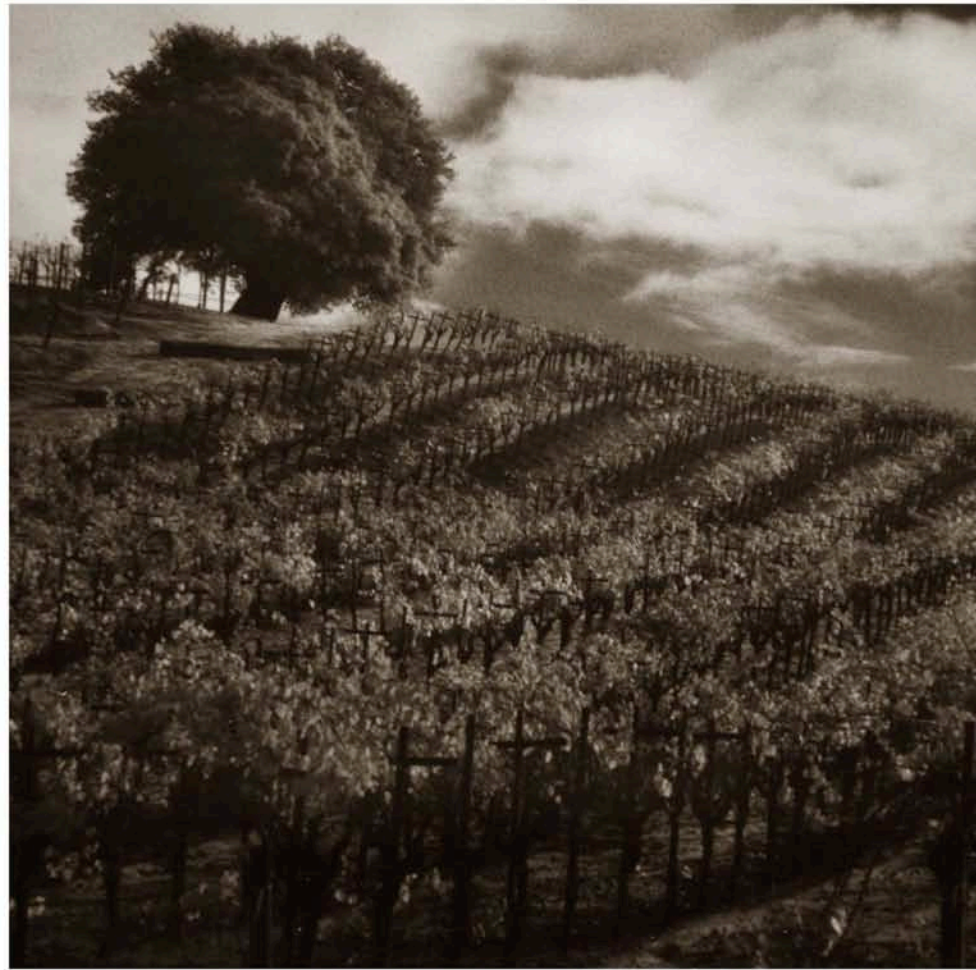
Dona Kopol Bonick

34

Dona Kopol Bonick lives and works as a photographer in Napa. Her work is included in the permanent collection of the di Rosa Preserve. Bonick's atmospheric images of the Napa and Sonoma Valleys are captured on black and white infrared film. The resulting images have a sense of mystery that underlies their beauty. She captures the nuanced phenomena of this particular landscape with the sensitive observance of someone who has lived here for many years.



Dona Kopol Bonick
Vineyard Cloud, Vineyard, Vineyard Birds
Silver gelatin prints, 20" x 30" each
(Corridor, leading to courtyard and meeting rooms)

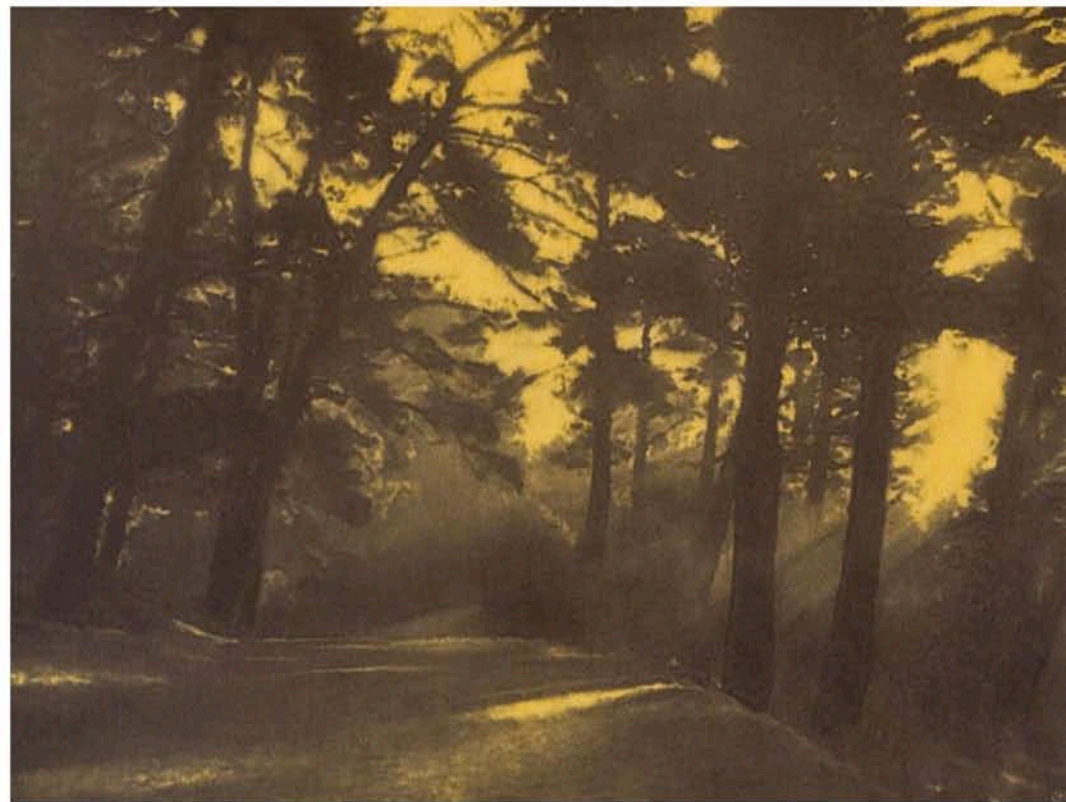
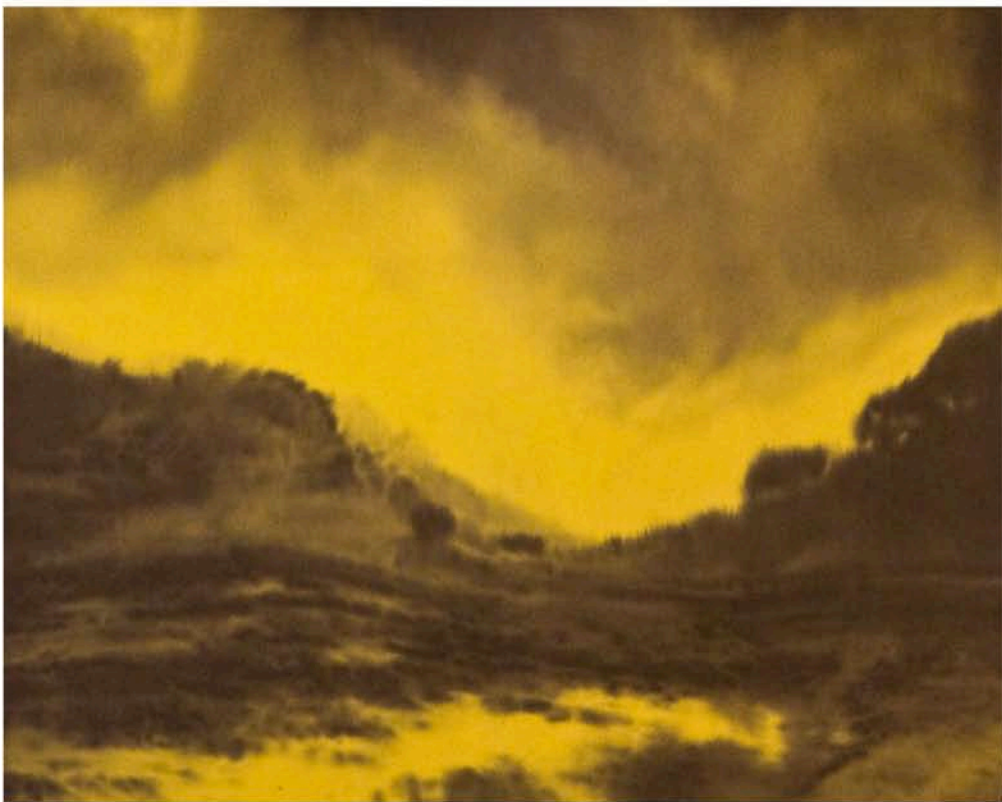


Dona Kopol Bonick
Six Trees, Lone Tree
Limited edition inkjet prints
(Guest Suites)

Seyed Alavi

Seyed Alavi lives and works in the East Bay. He has been widely recognized for his large-scale site-specific installations, such as those at the New Museum in New York and the Exploratorium in San Francisco, as well as his numerous public artworks, including those in San Jose, Emeryville, Sacramento and San Francisco. In these, he has used a very diverse range of media, from photography, sculpture and electronics to poetry, hardscape and carpet.

In his “Aquamano prints,” Alavi developed a technique for creating one-of-a-kind transfers of digital images onto hand-dyed paper. The images are actually digital re-compositions of original landscape photographs. The results are soft impressions of the landscape suffused with a quiet and contemplative mood, which completely belies the images’ digital processing.



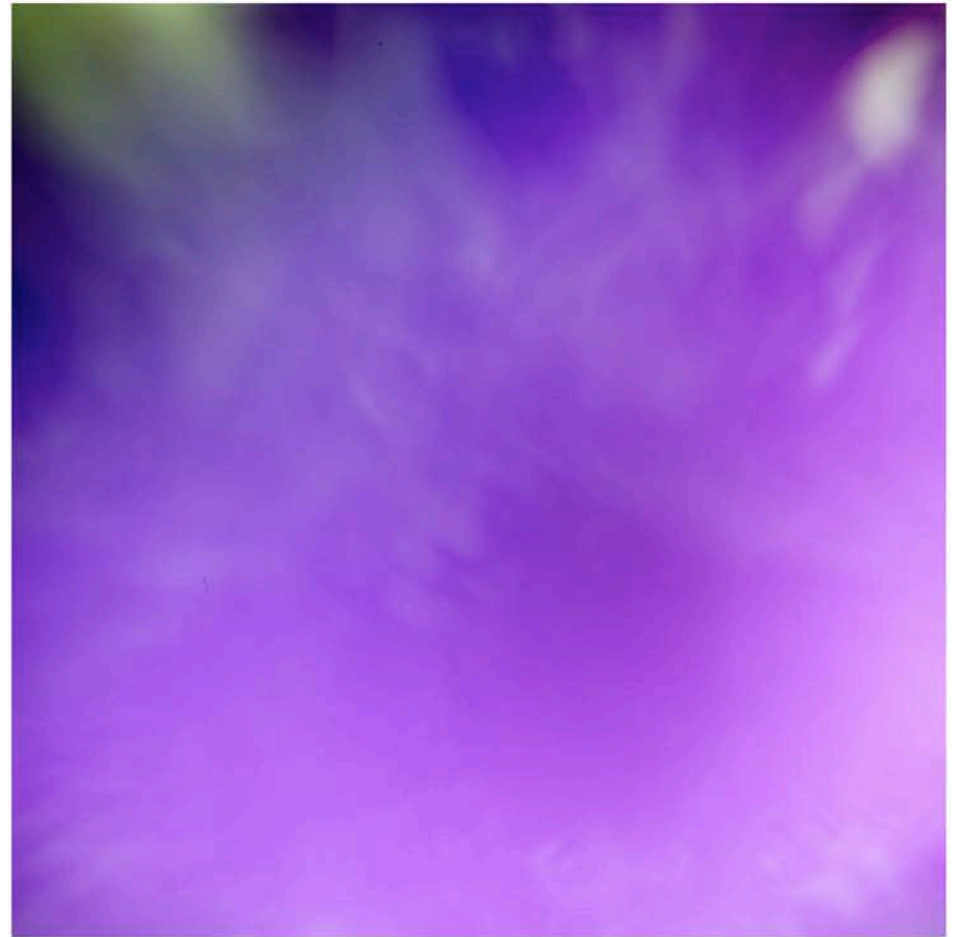
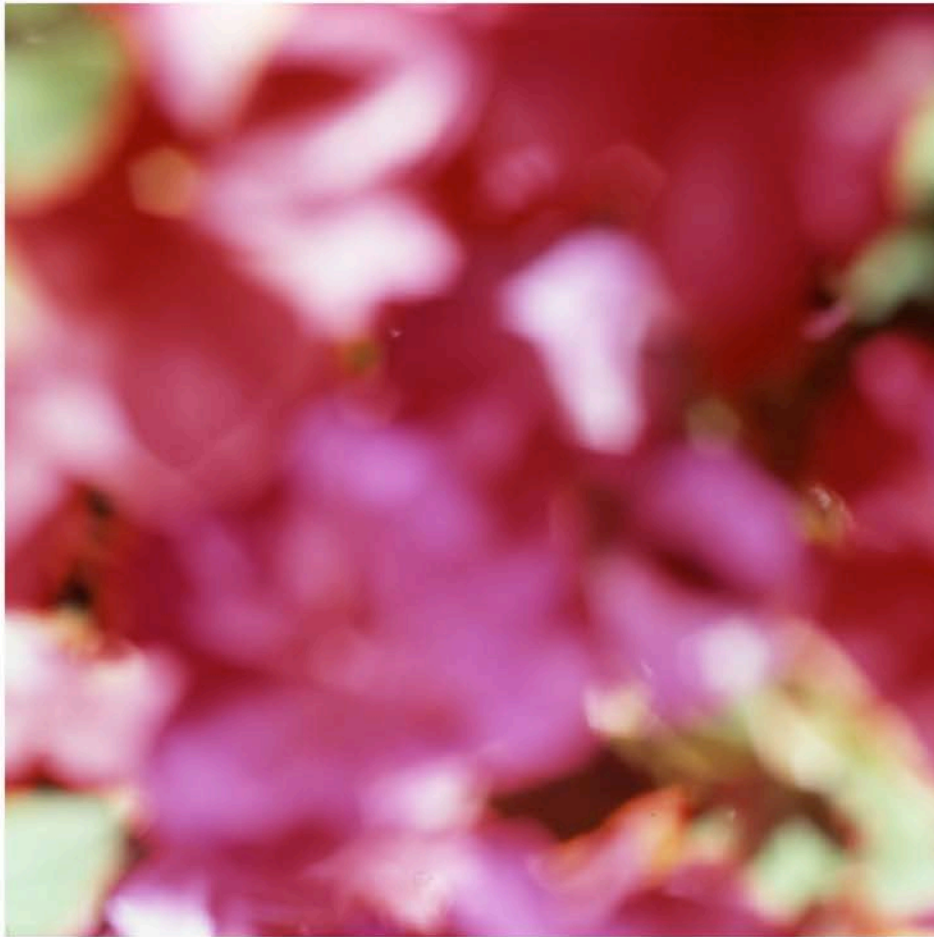
Seyed Alavi
Break in the Storm Tule Fog Facing Page: *Coyote River, Hakone 1*
Not Shown: *Hakone 2 Variation, End of the Day*
Unique aquamano prints



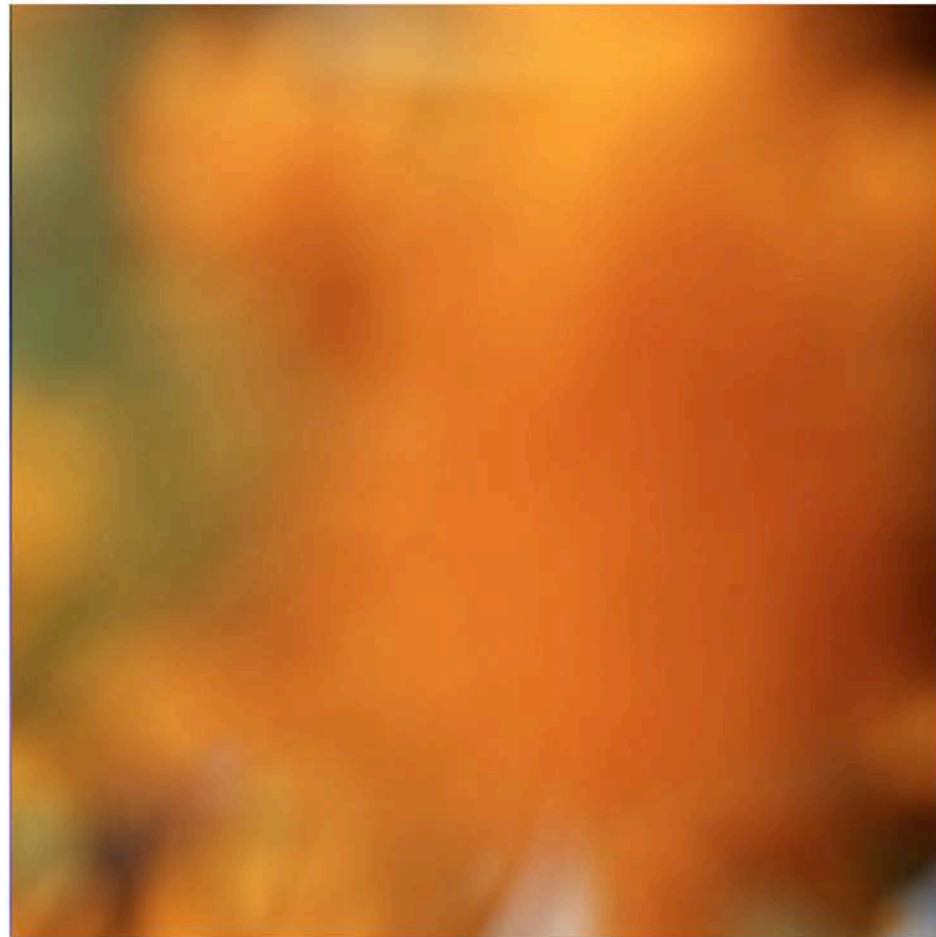
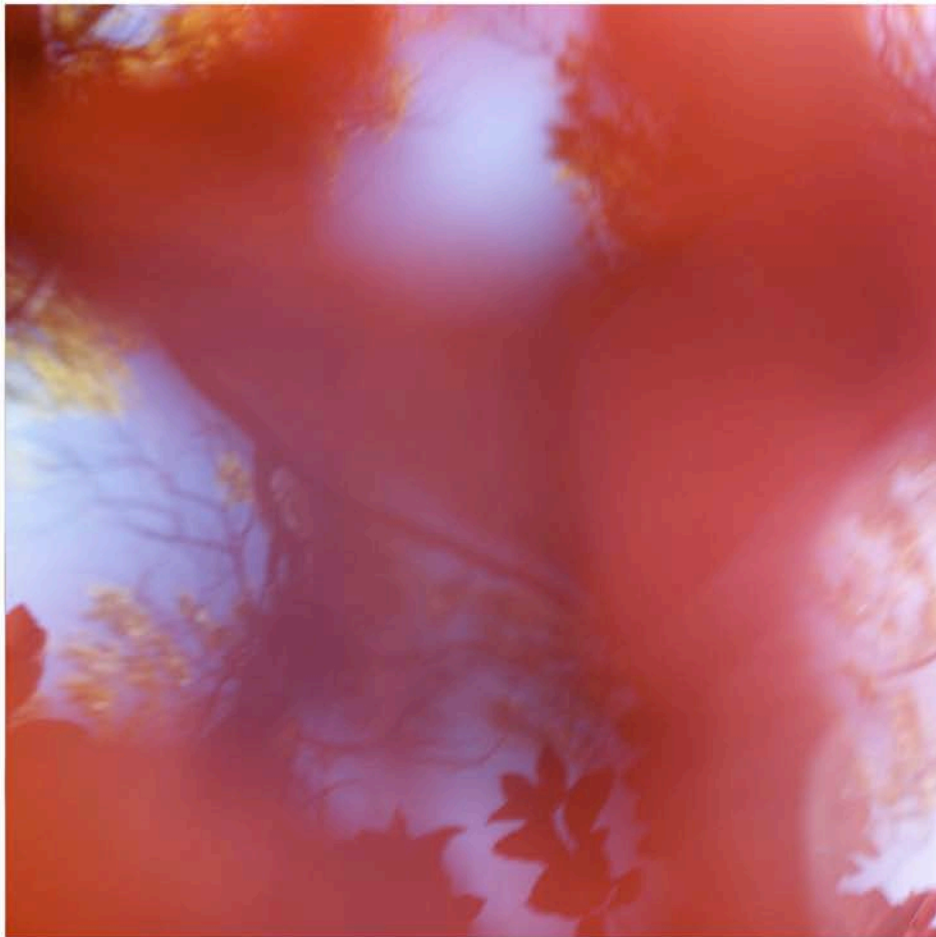
Keira Kotler

40

A resident of Marin, Keira Kotler received her MFA in painting at the San Francisco Art Institute. She is the recipient of the San Francisco Art Institute Curatorial Award and was a SITE Santa Fe Sponsored Artist. Her work has been exhibited nationally. In addition to her nearly abstract photographs, Kotler creates minimal paintings, prints and videos. Almost all of her work is focused on color and its evocative effects on an individual's psyche, emotional state, memory and physiology.



Keira Kotler
Lumina Fuchsia 110105, Lumina Violet 101205
LighJet prints mounted on aluminum
(First and third corridor niches)



Keira Kotler
Lumina Red 101205, Lumina Tangerine 100305
LighJet prints mounted on aluminum
(First and third corridor niches)

Christopher Martin

Christopher Martin lives and works in Texas. His vibrantly colored works include abstract digital photography, painting on canvas and painting on the reverse side of acrylic. In the spirit of Abstract Expressionists like Jackson Pollock, his gestural compositions on acrylic are determined in part by the flow of the paint on the surface, often suggesting a water-like movement. Martin's work can be found in collections worldwide, including those of Anheuser Busch, Starbucks, and Boeing Aerospace.





Christoher Martin
 Facing Page: *Bamboo 8*, Above: *Spinnel 3*, *Feren 4*,
 Acrylic painting on acrylic
 (Second floor corridor niches)

Art Locations

Catherine Courtenaye (1)

Stephen Galloway (2)

Jenn Shifflet (3)

Don and Era Farnsworth (4)

Lewis deSoto (5)

Dona Kopol Bonick (6)

Seyed Alavi (7)

Keira Kotler (8)

Christopher Martin (9)



Published by
Chandra Cerrito / Art Advisors LLC
Napa, California
www.chandracerrito.com

© 2008



THE WESTIN VERASA ART COLLECTION