

# TrueSight Server Automation

Maintain server compliance and accelerate productivity for IT Ops by up to 200%



## PRODUCT DESCRIPTION

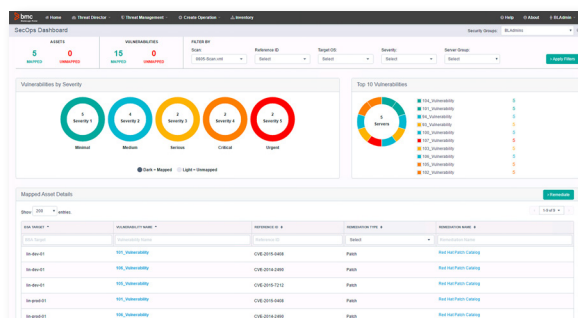
TrueSight Server Automation, formerly BladeLogic Server Automation, is the industry-leading solution for automated management, control, and enforcement of server patching and configuration changes in the data center and the cloud.

## BUSINESS CHALLENGE

All mission-critical applications depend on healthy data center servers to keep the business ahead of the competition. **If IT takes too long to provision, configure, or update servers, the organization can lose competitiveness, risk prolonged exposure to security vulnerabilities, or face costly fines for non-compliance.** With the complexity of heterogeneous physical, virtual, and cloud server environments, IT staff struggle just to meet SLAs for uptime and stability. Manual efforts are labor-intensive, error-prone, and simply not scalable. Expensive, highly-skilled administrators waste time on homegrown, script-based approaches with limited, temporary results that won't scale.

## BMC SOLUTION

TrueSight Server Automation provides a policy-based approach for IT administrators to manage their data centers with greater speed, quality, and consistency. Broad support for all major operating systems on physical servers and leading virtualization and cloud platforms lets IT install and configure server changes with ease. Rich, out-of-the-box content helps IT automate continuous compliance checks and remediation for security or regulatory requirements. **Now IT staff can build, configure, and enforce compliance faster and more reliably.** With a simplified web portal, the IT operations team can increase the server to admin ratio, gain productivity, complete audits swiftly, and quickly respond to increasing business demands.



## KEY FEATURES

**TrueSight Server Automation** helps admins provision, configure, patch, and maintain physical, virtual, and cloud servers.

- **Compliance and risk mitigation** – Full cycle of system discovery, monitoring, remediation, and integrated change control, providing continuous compliance and audit readiness with integration to Remedy ITSM suite
- **Full lifecycle management** – Focal point of control for the entire server lifecycle, simplifying compliance, ad hoc tasks, configuration, patching, and reporting
- **Advanced built-in security** – Granular role-based access control system that reduces the risk of misconfiguration and improves systems stability
- **Abstracted simplified management** – Enable full-stack layered provisioning for rapid, automated deployments
- **Maintenance windows** – Schedule jobs to run in approved maintenance windows for managed servers

## KEY BENEFITS

- **Increase speed** – Maintain compliance twice as fast with pre-configured compliance policies for detection and enforcement
- **Reduce risk** – Lower mean time to repair (MTTR) and increase IT efficiency by 87% with an intelligent, closed loop for automated remediation
- **Lower costs** – Slash administration time without requiring advanced programming or scripting skills

Quickly take action against vulnerabilities.

## PRODUCT DETAILS

**Multi-Tier Remediation:** Combine with TrueSight Vulnerability Management for an unprecedented security and compliance solution. Intuitive dashboards automatically link vulnerabilities to identified patches or configuration changes and create an attack plan to quickly shore up defenses.

**Compliance:** Simplify governance with role-based access control, pre-configured policies for CIS, DISA, HIPAA, PCI, SOX, NIST, and SCAP, integrated documentation, and remediation through repair, rollback, or configuration updates.

**Provisioning:** Provision server configurations based on a broad set of supported approaches such as unattended installs and image-based, script-based, or template-based provisioning for physical, virtual, and cloud-based data centers.

**Configuration:** Manage change and configuration activities with surgical precision across a broad range of server environments without scripting.

**Patching:** Keep your infrastructure secure and stable by applying patches with ease, reducing downtime, and preventing potential security breaches.

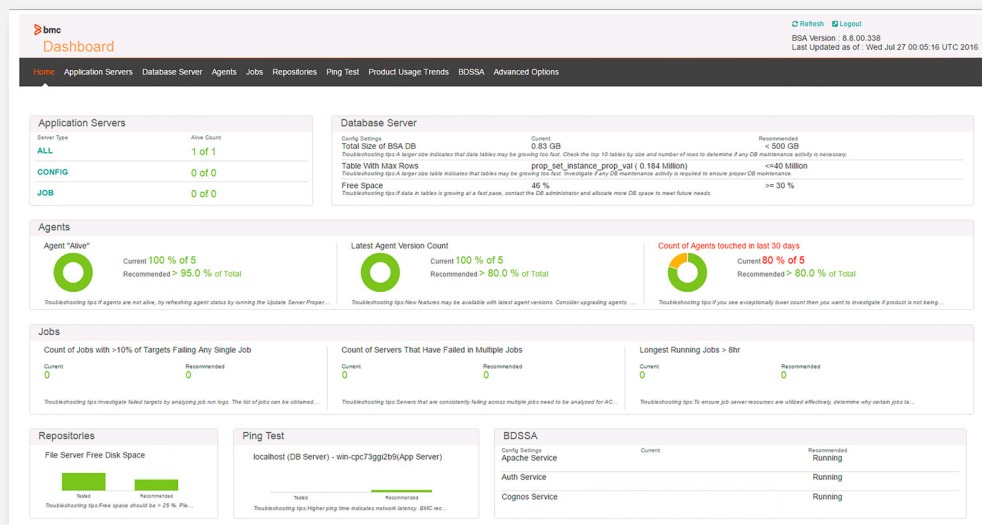
## Out-of-the-Box Support:


- Enterprise operating systems include Windows®, Linux®, and UNIX®
- Virtualization technologies from VMware, Microsoft, Red Hat, Citrix, IBM®, and Oracle®
- Integrations with BMC solutions for application discovery, full-stack configuration, incident and change management
- Integrations with open source vendors like Chef, Puppet, and Docker

**Reporting:** Cut the time required to assess the impact of change or complete an audit with real-time and historical views for compliance, inventory, provisioning, patching, and deployment, including automation value dashboards.

## FOR MORE INFORMATION

To learn more about TrueSight Server Automation, visit [bmc.com/it-solutions/truesight-server-automation](http://bmc.com/it-solutions/truesight-server-automation)



 Monitor the health of servers by server type, agent, job, and more.

BMC is a global leader in innovative software solutions that enable businesses to transform into digital enterprises for the ultimate competitive advantage. Our Digital Enterprise Management solutions are designed to fast track digital business from mainframe to mobile to cloud and beyond.



BMC, BMC Software, the BMC logo, and the BMC Software logo, and all other BMC Software product and service names are owned by BMC Software, Inc. and are registered or pending registration in the US Patent and Trademark Office or in the trademark offices of other countries. All other trademarks belong to their respective companies. © Copyright 2018 BMC Software, Inc.

