

---

# Rehabilitation Psychology International Exchange Program

---

A collaborative partnership between the rehabilitation  
psychology divisions of the Israel Psychological Association  
and American Psychological Association



הסתדרות הפסיכולוגים בישראל  
Israel Psychological Association  
Rehabilitation Division

---

Rehabilitation Psychology International Exchange Program Handbook

---

2017

# Table of Contents

Opening Remarks .....	5
Acknowledgement .....	8
Program Overview .....	10
Program at a Glance .....	12
Daily Events .....	13
APA Convention Program (Aug 4-6) .....	24
Israel Delegation .....	28
US Delegation .....	31

## **Delegation Hosts Contact Info:**

Connie Sung, PhD - [csung@msu.edu](mailto:csung@msu.edu) | (608) 320-5163

Tamar Press, PsyD - [tamar.press@nyumc.org](mailto:tamar.press@nyumc.org) | (917) 992-3937

# Opening Remarks



**Dr. Lisa Brenner**  
**President, APA Division 22**

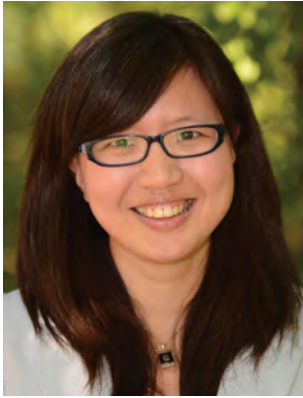
Dear Colleagues:

I am so pleased and honored to welcome our colleagues from the Israeli Psychological Association to the United States. As many of you may be aware, this exchange started in 2016, during which members of Division 22 traveled to Israel to live with and learn from Rehabilitation Psychologists practicing in a wide-range of settings. Being a part of this delegation was a career changing experience, in that it challenged me to rethink all aspects of my practice within the context of a much larger world view. Moreover, as a Rehabilitation

Psychologist who works with US military veterans, I felt a special kinship with our Israeli colleagues engaged in providing care to those living with wounds sustained in combat settings. If you are attending the 2017 APA Convention, I encourage you to take time to meet and talk with members of the Israeli delegation. I also want to extend my thanks to Connie Sung, PhD and Tamar Press, PsyD who have worked tirelessly to make arrangements for our Israeli colleagues.

Shalom

Lisa Brenner



**Dr. Connie Sung**  
**APA Division 22 International Committee Chair**  
**APA Division 22 Early Career Psychologist Representative**

Dear Colleagues:

It is my great honor and privilege to have been given the opportunity to be a part of this very first exchange program involving the Israeli Psychology Association-Rehabilitation Division and APA Division 22 (Rehabilitation Psychology). It is my strong believe that developing institutional linkages and collaborative relationships through joint efforts like this enriches everybody involved.

In December 2016, we, the five U.S. delegates, visited many state-of-the-art rehabilitation facilities in Israel and had an inspiring and productive experience. Since then, we have been exchanging numerous great ideas with our Israeli colleagues and establishing exciting opportunities for collaboration in clinical training and research. Now, in July/August 2017, I am very excited that we are moving toward our next milestone, where an Israeli delegation of eight rehabilitation psychologists are visiting the U.S. for an exchange.

This initiative is an excellent example of how rehabilitation psychologists around the globe is striving to gain knowledge, insights and understanding of individuals with disabilities/ chronic illnesses and their needs, to learn about ways to enhance provision of the rehabilitation services to their citizens of the country, and thus ways to instill hope and improve quality of life for those who have disabilities/chronic illnesses. This joint effort not only provides a wonderful opportunity for delegates, professionals and graduate students in rehabilitation psychology from both countries to meet, interact and learn from each other; it also promotes diversity of psychological perspectives and encourages collaborations between APA Division 22 and IPA-Rehab Division in areas of research, practice and training.

It takes a village to develop a successful exchange program like this one! Special thanks to Dr. Omer Porat, Mr. Perri Segal, Dr. Lisa Brenner, Dr. Tamar Press, Dr. Jacob Chan, Dr. Marlene Vega, Dr. Kathleen Brown, and the entire exchange program planning committee for their enthusiastic work in making this unique and exciting exchange program possible! Also, my sincere gratitudes go to our sponsors and all the hosting organizations in U.S. and Israel - thank you for supporting this important initiative and being a part of it! Last but not least, I would like to extend my warm and special welcome to our Israeli delegates!

Through this experience, I find my perspective expanded and passion for rehabilitation psychology reinvigorated. As the Chair of Division 22 International Committee, I greatly look forward to meeting everyone and our fruitful collaboration.

Connie Sung



**Dr. Omer Porat**  
**Chair, Israeli Psychological Association - Rehab Division**

Dear Colleagues,

I am delighted and honored to write to you today. Two years ago (July 2015), the Rehabilitation section of the IPA initiated a collaborative project with APA Division 22. The first part of our collaboration was the visit to Israel by five American delegates, led by Dr. Lisa Brenner, in December 2016. We are now at the next stage, where an Israeli delegation of eight delegates is visiting the U.S. for a reciprocal visit, culminating with participation at the APA convention in DC.

Israel is a small country with limited resources, and for many years professionals in other disciplines, particularly science, medicine and technology, have often studied and trained abroad while psychologists had much less exposure to psychology practices in other countries. This program was designed to challenge these gaps, and with the generous support of the Ted Arison Family Foundation, it became possible.

For psychologists who work and train in Israel, this is a new and exciting opportunity. Through our discussions with our U.S. colleagues, we learned about the differences, similarities and challenges in rehabilitation psychology as practiced in both countries. The interaction with our U.S. colleagues gave us a special experience to see our practice through different viewpoints, thus enriching our perspectives and offering us new objectives. Since the visit of our U.S. colleagues to Israel in December 2016, we have already shared some successful and helpful collaborations. We hope this will only be the beginning of a longer-term process of incorporating best clinical practices, teaching and research to the current practice of psychology in Israel.

As happens in most worthy endeavors, many people helped make this project happen. From the APA Division 22, we offer many thanks to Lisa Brenner, Chrisann Schiro-Geist, Kelly Stearns, Kathleen Brown, Connie Sung, Tamar Press, Marlene Vega, Jacob Chan, and the many other colleagues who are graciously hosting the Israeli delegation. In Israel, many thanks to Perri Segal, Yotam Ben-Shatz, Noa Vilchinsky, Keren Serebro, Dany Kafri and Meir Naaman. Special recognition and gratitude is given to Dr. Arik Sitton, Yifat Shmulevich and Ohad Madanes for their outstanding support and belief in our vision. I wish to thank all others who have contributed to this endeavor and are not mentioned here, and send you all a blessing from us in Israel: Shalom Aleichem – May peace be upon you!

Omer Porat

# Acknowledgements

Our gratitude and heartfelt thank you to the following individuals and organizations.

*- International Committee, APA Division of Rehabilitation Psychology*

## **Sponsors**

Ted Arison Family Foundation  
Madanes Insurance Agency  
Eugene & Estelle Ferkauf Foundation  
Michigan State University  
University of Colorado, Anschutz Medical Campus  
American Psychological Association  
Israeli Psychological Association

## **U.S. Host Organizations**

JFK Johnson Rehabilitation Institute  
Johns Hopkins University School of Medicine  
Kessler Institute for Rehabilitation  
Mount Sinai Hospital  
NYC Health & Hospitals – Bellevue  
NYU Langone Health – Rusk Rehabilitation  
NYU Langone Health – Tisch Hospital  
NYU Langone Orthopedic Hospital  
Walter Reed National Military Medical Center  
Washington DC Veterans Affairs Medical Center

## **Israel Host Organizations**

ALEH Negev – Nahalat Eran  
Alyn Pediatric Rehabilitation Hospital – Jerusalem  
Asaf Harofeh Hospital Hyperbaric Center  
Bar-Ilan University, Psychology Department, Community Clinic  
Beit Halochem Beersheva, IDF Disabled Veteran Organization  
Ichilov Hospital, Tel Aviv Sourasky Medical Center, Rehabilitation Department  
Loewenstein Hospital Rehabilitation Center  
Mashabim Community Rehabilitation Center  
Nitsan Onim Social Rehabilitation Center  
Reccanati National Head Injury Rehabilitation Center

Reuth Rehabilitation Medical Center – Tel Aviv  
Sheba Pediatric Hospital, Rehabilitation Department  
Sheba Medical Center, Rehabilitation Department  
The Neuropsychological Unit of Tel Aviv

## **U.S. Partners**

Dr. Lisa Brenner, Div 22 President  
Dr. Gitendra Uswatte, Past Div 22 President  
Dr. Kathleen S. Brown, Past Div 22 President  
Dr. Connie Sung, Chair of Div 22 International Committee and Exchange Program Co-Leader  
Dr. Chrisann Schiro-Geist, Former Chair of Div 22 International Committee  
Dr. Tamar Press, Member of Div 22 International Committee  
Dr. Jacob Chan, Member of Div 22 International Committee  
Dr. Marlene Vega, Member of Div 22 International Committee  
Dr. Ferzeen Patel, Co-Chair of Div 22 ECP Special Interest Group

## **Israel Partners**

Mrs. Yifat Shmulevich, Ted Arison Family Foundation  
Dr. Eric Sitton, Former Director of Rehabilitation Department at the Ministry of Health  
Mrs. Yemima Goldberg, Former Head Psychologist at the Ministry of Health  
Mrs. Dalyah Neeman, Head of the Professional Rehabilitation Committee, Psychologist Council of the Ministry of Health  
Mrs. Einav Shimron, Vice-President of International Relations Department Ministry of Health  
Ms. Revital Mimran, International Relations Department, Ministry of Health  
Mrs. Shantal Cohen, Head of Rehabilitation Division of Southern District, Ministry of Defense  
Mrs. Ahuva Goldman, Head social welfare Southern District, Ministry of Defense  
Mr. Dani Kafri, C.E.O. of Israeli Psychological Association  
Dr. Meir Naaman, Chair of Israeli Psychological Association  
Dr. Omer Porat, Chair of Israeli Psychological Association Rehab Div and Exchange Program Leader  
Mr. Perri Segal, Program Development and American Delegation Host  
Mrs. Sivan Zazrin, Administrative Assistant of Israeli Psychological Association  
Dr. Ofir Abu, Exchange Program Grant Development  
Mr. Charles Herman, Exchange Program Grant Development  
Mr. Nathan Bornstein, Reuth Organization  
Mrs. Esti Wertheim, Reuth Organization  
Mr. Amir Sagie, Deputy Consul General, Israeli Consulate, New York  
Dr. Jaana Ahonniska-Assa, Selection Committee  
Dr. Tali Bitan, Selection Committee  
Prof. Dani Hoofien, Selection Committee  
Prof. Eli Vakil, Selection Committee



# Program Overview

The Division of Rehabilitation Psychology of American Psychological Association (APA) and the Rehabilitation Division of the Israeli Psychological Association (IPA-Rehab Div) launched an exchange program in 2016, with the purpose of fostering professional development by knowledge and experience in a wide range of psychological interests, establishment of international relationships, creation of opportunities for collaborative research in rehabilitation psychology, and development of evidenced-based practices that address issues related to disability and chronic illness.

This joint venture has been made possible primarily by financial support of the Ted Arison Family Foundation and has also been endorsed by the Israeli Ministry of Health's Head Psychologist, the Council of Psychologists - professional committee on Rehabilitation Psychology and the Rehabilitation Department of the Ministry of Health. This collaboration has been in support of the memorandum of understanding (MoU) established between APA and IPA signed in July 2014.

The **initial phase** of the exchange program took place between December 12th and 22nd, 2016 when four APA Division 22 members alongside with the President of Division 22 were selected to participate in a 11-day professional tour covering research, practice, training and education at rehabilitation sites throughout Israel. These U.S. delegates were composed of both early-career and mid-career rehabilitation psychologists who came from very diverse background, completed doctoral (PhD and PsyD) training in rehabilitation psychology, have years of work experience in academia and/or clinical settings. The delegation visited 15 different sites including rehabilitation hospitals, clinics, universities, and other facilities in Israel. They concluded the trip by attending a three-day annual convention organized by the IPA Rehabilitation Division near Mount Carmel. The U.S. delegates attended multiple presentations at each site and met with a number of rehabilitation psychologists in Israel to exchange ideas and discuss potential opportunities for collaboration. During the IPA convention, the delegates hosted a session with current Israeli rehabilitation psychology students to talk about potential clinical training and research opportunities in the U.S.

The **second phase** of this program is now taking place in summer 2017. The team of Israeli delegates is comprised of eight rehabilitation psychologists currently working at educational institutions, hospital settings, or community care centers in Israel. The delegation will participate in a two-week professional tour of various rehabilitation facilities, research centers, and academic institutions in the greater New York City and Washington, DC metro

areas beginning July 23rd and finalizing on August 6th, 2017. As a part of the tour, the delegation will attend the American Psychological Association Annual Convention in Washington D.C. and participate in a symposium discussing lessons learned and future directions. The Israeli delegation will also give a poster presentation at the Div 22 Hospitality Suite regarding their clinical and research work on psychological assessment tools, therapeutic interventions and research interests with a hope to establish educational and research opportunities.

All 13 delegates will participate in meetings with the Division 22 International Committee focused on furthering collaborative initiatives identified during both trips. There are other social events planned for the delegation including an international reception hosted by APA's Office of International Affairs, a reception hosted by Division 22 and APA's Committee on Disability Issues in Psychology, and an Early Career Psychologist/Student joint social hour. The Israeli delegation will have the opportunity to share their professional interests, and facilitate possible collaboration both during the tour and during the convention.

While these visits provide opportunity for collaborative interests to blossom, the **third phase** of this program will emphasize collaboration sustainability via distribution of a survey to members of both organizations to broadly identify specific collaboration interests. The survey will lead to creation of a collaboration directory that would include information gathered in the survey, include. The directory will then be distributed to Division 22 and IPA-Rehab Division members. A joint task force will be formed to facilitate matching of rehabilitation psychologists of both organizations relative to identified interests. The goal of this phase is to facilitate innovative research focused on disability and chronic illness issues, and establishment of collaborative relationships. Grant funding from APA will allow allocation of micro grants to select projects to facilitate and incentivize projects in which early career psychologists are the lead investigator(s) or author(s).

# Program at a Glance

Sun (7/23)	Mon (7/24)	Tue (7/25)	Wed (7/26)	Thu (7/27)	Fri (7/28)	Sat (7/29)
Check in to NY Hotel	Kessler Institute for Rehabilitation   West Orange NJ	Mount Sinai Hospital   New York, NY	JFK Johnson Rehabilitation Institute   Edison, NJ	Rusk Rehabilitation at NYU Langone Health   New York, NY	NYU Langone Hospitals   New York, NY	Free Day
—	—	—	—	—	—	—
Brief meeting at 8pm at NY hotel lobby	<i>Free evening</i>	Gala Dinner at Bedford & Co. (118 E. 40th Street)	<i>Free evening</i>	<i>Free Evening</i>	<i>Free Evening</i>	<b>Shabbat Shalom!</b>

7/23 - 7/30: Stay at The Marcel At Gramercy [201 E 24th St, New York, NY 10010]

Sun (7/30)	Mon (8/1)	Tue (8/2)	Wed (8/3)	Thu (8/4)	Fri (8/5)	Sat (8/6)
Travel from NYC (Penn Station) to DC (Union Station) via Amtrak train	Walter Reed National Military Medical Center   Bethesda, MD	Johns Hopkins University School of Medicine   Baltimore, MD	Washington DC Veterans Affairs Medical Center   Washington, DC	9am-noon: APA Convention (own choice of sessions) 1-3pm: Div 22 EC Meeting 3-4pm: Reception hosted by APA Int'l Office	APA Convention (all day) 9-11am: Joint Oral Presentation 11:30-1:30pm: Luncheon & Poster Presentation 1:30-3pm: International Committee Meeting 3-4pm: ECP SIG Meeting 4-6pm: ECP/ Student Joint Social Hour	Free Day or APA Convention (own choice of session) <b>Shabbat Shalom!</b> =====
Check in to DC Hotel	—	—	—	4-5pm: Div 22 Presidential/ Fellow Address 7-9pm: Div 22/ ABPP/CDIP Social Hour	—	—
Brief meeting at 8pm at DC hotel lobby	<i>Free evening</i>	Dinner hosted by Johns Hopkins	Dinner hosted by Div 22 International Committee	—	—	<b>Sun (8/7)</b> Morning: Debriefing Afternoon: Free Time Evening: Depart from DC for Israel

7/30 - 8/6: Stay at Cambria Hotel and Suite Washington D.C. [899 O St NW, Washington, DC 20001]

---

# Daily Events

---

Date: July 24 - August 6, 2017

Location: New York & Washington DC

# Monday, July 24th, 2017

---

## Kessler Institute for Rehabilitation

1199 Pleasant Valley Way, West Orange NJ 07052  
Contact: Nancy D. Chiaravalloti, PhD | 201-637-3595  
<http://www.kessler-rehab.com>

- 9:30 - 10:00 am**      **Welcome**  
John DeLuca, PhD  
*President's Conference Room*
- Tour of Clinical Facilities [10:00 - 12:30pm]**
- 10:00 - 11:00 am**      **Meet and Greet**  
Teddie Potter MSN CRNN - Senior Brain Injury Program Coordinator  
Jane Mitchell - SCI and Ventilator Program Coordinator  
Heather Higgins, MBA, OTR/L - Director, Inpatient Rehabilitation  
Steven Kirshblum, MD - Senior Medical Officer and Director of SCI Services,  
KIR Chief Academic Officer. Select Medical Rehabilitation Inpatient Division  
*Kessler Institute*
- 11:00 am - noon**      **Tour**  
Bonnie Evans, CEO KIR  
*Kessler Institute*
- noon - 12:30 pm**      **Cognitive Rehabilitation Program**  
Monique Tremaine, PhD  
Judi Weinberger, M.Ed., LRC, CBIST - Outpatient Brain Injury Case Manager  
Tina Collar, MS, OTR/L - Clinical Manager Cognitive Rehabilitation Program  
*Kessler Institute*
- 12:30 - 1:15 pm**      **Lunch**  
*President's Conference Room*
- Research Activities [1:15-4pm]**
- 1:15 - 1:30 pm**      **Research Overview**  
John DeLuca, PhD  
*President's Conference Room*
- 1:30 - 2:00 pm**      **Cognitive Rehabilitation**  
Nancy Chiaravalloti, PhD  
Jean Lengenfelder, PhD  
Helen Genova, PhD  
Erica Weber, PhD  
*President's Conference Room*

**2:00 - 2:30 pm**      **Virtual Reality**  
Denise Krch, PhD  
Research Scientist, KF  
*President's Conference Room*

**2:30 - 3:00 pm**      **Ekso**  
Karen Nolan, PhD  
Gail Forrest, PhD  
*Human Performance and Engineering Lab*

**3:00 - 3:30 pm**      **Prism Adaptation Therapy**  
AM Barrett, MD  
*Stroke Lab*

**3:30 - 4:00 pm**      **Neuroimaging (Fatigue)**  
Glenn Wylie, D.Phil  
Brian Yao, PhD  
Helen Genova, PhD  
Ekaterina Dobryakova, PhD  
*Rocco Ortenzio Neuroimaging Center*

**4:00 pm**              **Conclude**  
John DeLuca, PhD  
*President's Conference Room*

# Tuesday, July 25th, 2017

---

## Mount Sinai Hospital

3 East 101st Street, New York, NY 10029

Contact: Wayne A. Gordon, PhD, ABPP/Cn | 212-824-8372

[www.mountsinai.org/patient-care/service-areas/rehabilitation-medicine](http://www.mountsinai.org/patient-care/service-areas/rehabilitation-medicine)

- |                  |   |
|------------------|---|
| 9:15 - 9:45 am   | <b>Rehabilitation Medicine into the Future</b><br>Joseph Herrera, DO  |
| 9:45 - 10:15 am  | <b>WellPATH: An Emotion Regulation App For Suicide Prevention</b><br>David Putrino, PhD   |
| 10:15 - 10:45 am | <b>Overview of TBI Model System &amp; Brain Injury Research Center (BIRC)</b><br>Kristen Dams-O'Connor, PhD<br>Maria Kajankova, PhD |
| 10:45 - 11:15 am | <b>Embracing Sexuality After Spinal Cord Injury: A Series of Conferences</b><br>Angela Riccobono, PhD                               |
| 11:15 - 11:45 am | <b>Overview of SCI Inpatient Rehabilitation, Research and Model Systems</b><br>Miguel Escalon, MD                                   |
| 11:45 - 12:15 pm | <b>Tour</b><br>Lori McKenna, Melissa Gunning & Adrienne Ormond  |

## Group Dinner with Training Directors & Rehabilitation Psychologists Bedford & Co.

118 E 40th St, New York, NY 10016

- |                 |   |
|-----------------|---|
| 6:00 - 7:00 pm  | <b>Cocktail Hour</b>  |
| 7:00 - 7:30 pm  | <b>Program</b><br>Award Presentation (Dr. Leonard Diller and Dr. Yehuda Ben-Yishay) |
| 7:30 - 10:00 pm | <b>Gala Dinner</b>  |

# Wednesday, July 26th, 2017

---

## JFK Johnson Rehabilitation Institute

2048 Oak Tree Road, Edison, New Jersey 08820

Contact: Yelena Goldin, PhD | 347-200-2337

[www.jfkmc.org/clinical-services/jfk-johnson-rehabilitation-institute](http://www.jfkmc.org/clinical-services/jfk-johnson-rehabilitation-institute)

- 9:00 - 10:00 am**      **Introductions (Breakfast provided)**  
Chair: Sara Cuccurullo, MD  
Medical director: Brian Greenwald, MD  
Christine Greis, DO  
Richard Malone  
Georgiana Dart, PsyD  
Talia Fleming, MD  
Brain injury fellow  
Residents
- 10:00 - 11:45 am**      **Tour Main Hospital**  
Brain Trauma Unit – acute brain injury rehabilitation program  
Stroke Recovery Program – CVA, outpatient basis
- Travel to Hartwyck**
- 12:00 - 1:00 pm**      **Lunch with Cognitive Rehabilitation Staff at Hartwyck**  
Director: Keith Cicerone, PhD, ABPP-Cn, FACRM  
Neuropsychologist & Clinical Researcher: Yelena Goldin, PhD  
Supervisor: Eileen Ryan (Speech Therapy)  
Supervisor: Eileen Crandall (Occupational Therapy)  
Susan Paradise, MEd (Educational Rehab)  
Roseann Sevinsky (Vocational Rehab)  
Neuropsychology Residents
- 1:15 - 2:00 pm**      **Hartwyck Extended Recovery Unit**  
Jaime Levine, MD
- 2:00 - 4:00 pm**      **Comprehensive cognitive rehabilitation program including neuropsychology**



# Thursday, July 27th, 2017

---

## Rusk Rehabilitation at NYU Langone Health

240 East 38th Street, 17th Floor, New York, NY 10016

Contact: Tamar Press, PsyD | (212) 263-8773

[www.nyulmc.org/rusk](http://www.nyulmc.org/rusk)

- 9:00 - 9:45 am      **Introductions with Full Staff (Breakfast provided)**  
*Room 17-43*
- 9:45 - 10:00 am      **Break**
- 10:00 - 11:00 am      **The Brain Injury Day Treatment Program**  
David Biderman, PhD  
Ellen Daniels-Zide, EdD  
Bonnie Marks, PhD  
*Room 17-43*
- 11:00 - 11:45am      **Meet w Leonard Diller, PhD & Yehuda Ben-Yishay, PhD**  
*Room 17-40*
- 12:00 - 1:00 pm      **Award Ceremony Luncheon**  
Joseph Ricker, PhD  
*Room G-11*
- 1:15 - 2:00 pm      **Meet with Administrators from the Department of PM&R**  
Tour Rusk Rehabilitation (Psych, PT, OT, & Voc.)  
Joseph Ricker, PhD  
Kate Parkin, DPT - Senior Director of Therapy Services at Rusk Rehabilitation  
Monica Tietsworth, MBA, CMPE  
*Room 17-40*
- 2:15 - 3:00 pm      **Meet with Supervisors from Psychology Department**  
Joseph Ricker, PhD  
Barbara Cicero, PhD  
Donna Langenbahn, PhD  
Robert Gordon, PsyD  
*Room 17-40*
- 3:00 - 4:00 pm      **Break**
- 4:00 - 5:00 pm      **Research Brain Storming Sessions**  
Joseph Rath, PhD  
Hilary Bertisch, PhD  
Tamara Bushnik, PhD  
Preeti Raghavan, MD  
*Room 17-40*

# Friday, July 28th, 2017

---

## NYU Langone Hospitals

Rusk Rehabilitation | 240 East 38th Street | [www.nyulmc.org/rusk](http://www.nyulmc.org/rusk)

NYU Langone Orthopedic Hospital | 301 East 17th Street | <http://nyulangone.org/locations/nyulangone-orthopedic-hospital>

NYC Health & Hospitals: Bellevue | 462 First Avenue | [www.nychealthandhospitals.org/bellevue/](http://www.nychealthandhospitals.org/bellevue/)

Tisch Hospital | 550 First Avenue | <http://nyulangone.org/locations/tisch-hospital>

Contact: Tamar Press, PsyD | (212) 263-8773

- 9:00 - 10:00 am      **Discussion hour with Brain Injury Day Treatment Program**  
Ellen Daniels-Zide, EdD  
David Biderman, PhD  
*Rusk Rehabilitation (room 17-43)*
- 10:00 - 11:00 am      **Alex Moroz, MD - Vice chair of Education & Training**  
*Rusk Rehabilitation (room 17-43)*
- 11:00 - 11:30 am      Travel time
- 11:30 - 1:00 pm      **NYU Langone Orthopedic Hospital (Room 500) (Lunch provided)**  
Maria Cristina Tafurt - Site Director for Rehabilitation Therapy Services  
Karen Langer, PhD  
Chris Rackley, PsyD  
Heidi Fusco, MD
- 1:00 - 1:30 pm      Travel time
- 1:30 - 2:30 pm      **NYC Health & Hospitals: Bellevue, Department of Rehabilitation**  
Beatrice Caan, PhD
- 2:30 - 3:00 pm      Travel time
- 3:00 - 4:30 pm      **NYU Langone Health - Tisch Hospital**  
*Cardiac Unit – HCC11*  
*Inpatient Acute Rehabilitation – HCC9*  
Catherine Atkins, PhD  
Phil Uy, PhD  
John Corcoran, PT, DPT, MS, Cert.MDT - Site Director for Rehabilitation Therapy Services

# Monday, July 31st, 2017

---

## Walter Reed National Military Medical Center

4494 North Palmer Road, Bethesda, MD 20889

Contact: Krysia Olas | 301-642-6915

[www.wrnmmc.capmed.mil/SitePages/home.aspx](http://www.wrnmmc.capmed.mil/SitePages/home.aspx)

- 9:00 - 9:05 am      **Official Party Arrives**  
Ms. Krysia Olas, Chief, Military Health Diplomacy, WRNMMC  
*NICoE Circle Drive*
- 9:05 - 9:45 am      **Briefing - NICoE Overview**  
Louis M. French, PsyD, Deputy Director for Operations, NICoE, WRNMMC  
*NICoE Board Room*
- 9:45 - 10:55 am    **Walking Tour - National Intrepid Center of Excellence**  
Louis M. French, PsyD, Deputy Director for Operations, NICoE, WRNMMC
- 10:55 - 11:00 am   **Transition to Eagle Building**
- 11:00 - 11:30 am   **Walking Tour - 7 East Inpatient Neurobehavioral Program**  
Johanna Wolf, PsyD, Program Manager & Clinical Psychologist, WRNMMC
- 11:30 am            **Official Party Departs**  
*NICoE Circle Drive*

# Tuesday, August 1st, 2017

---

## Johns Hopkins University School of Medicine

5601 Loch Raven Blvd, Baltimore, MD 21239

Contact: William Stiers, PhD | (410) 532-4701

[www.hopkinsmedicine.org](http://www.hopkinsmedicine.org)

### Division of Rehabilitation Psychology and Neuropsychology

### Department of Physical Medicine and Rehabilitation

### Johns Hopkins University School of Medicine

#### Participating faculty

Stephen Wegener, PhD, ABPP (RP), Professor and Division Director

William Stiers, PhD, ABPP (RP), Associate Professor and Director of Training

Pegah Touradji, PhD, Assistant Professor and Program Director for Neuropsychology

Nicole Schechter, PsyD, Assistant Professor

Megan Hosey, PhD, Assistant Professor

Meghan Beier, PhD, Assistant Professor

Abbey Hughes, PhD, Assistant Professor

Katherine Wright, PhD, Assistant Professor

8:10 am	Depart Washington, D.C.–Union Station on Amtrak train to Baltimore–Penn Station
9:00 - 9:30 am	Pick-up at Baltimore–Penn Station
9:30 - 10:00 am	<b>Arrival at Johns Hopkins and Welcome</b>
10:00 am - noon	<b>Large Group Discussion – The Practice of Rehabilitation Psychology and Neuropsychology</b> Assessment and Treatment of Acute and Chronic Cognitive Impairment Delirium, traumatic brain injury, stroke Assessment and Treatment of Acute and Chronic Pain Assessment and Treatment of Coping and Adjustment with Disability Limb amputation, multiple sclerosis Assessment and Treatment of Symptom and Disease Self-Management
12:00 - 1:00 pm	<b>Lunch</b>
1:00 - 2:00 pm	<b>Additional Practice Topics:</b> <b>Taking Rehab Outside of Rehab &amp;</b> Early mobilization in the intensive care units; Enhanced consult services to other inpatient services; Rehab management of beds on other inpatient services; Working in rehabilitation and other outpatient teams <b>Education and Training Issues</b>

2:00 - 2:45 pm	<p><b>Large Group Discussion – The Context of Psychology Specialties</b>  How are psychology specialties defined?  How are psychology specialties recognized or accredited?  How are specialty psychology training programs recognized or accredited?  How are specialty practitioners recognized or certified?</p>
2:45 - 3:30 pm	<p><b>Large Group Discussion – The Practice of Rehabilitation Psychology and Neuropsychology</b>  How is the health care system structured?  How do the hospitals and clinics operate?  How do the psychologists operate?  What are the clinical services?  What are the research activities?</p>
3:30 - 4:30 pm	<p><b>Tour and Meeting with Other Professionals</b>  <i>Meyer 7, MICU</i></p>
4:30 pm	<p><b>End formal program and leave for dinner</b></p>
5:30 - 7:30 pm	<p><b>Dinner hosted by Johns Hopkins</b></p>
7:30 - 8:00 pm	<p>Travel to Baltimore–Penn Station</p>
8:23 pm	<p>Depart Baltimore–Penn Station on Amtrak train to Washington, D.C.–Union Station</p>

# Wednesday, August 2nd, 2017

---

## Washington DC VA Medical Center

50 Irving St. NW., Washington, DC 20422

Contact: Elspeth C. Ritchie, MD, MPH | (301) 801-4723

[www.washingtondc.va.gov](http://www.washingtondc.va.gov)

- 8:50 - 9:00 am** Delegation greeted curbside and escorted to the Director's Suite by Dr. Elspeth Ritchie, Acting Associate Chief of Staff for Mental Health and Dr. Joel Scholten, National Director, Physical Medicine and Rehabilitation
- 9:00 - 9:15 am** Courtesy Call with Mr. Larry Connell, Acting Medical Center Director
- 9:15 - 10:45 am** Facility Tour  
Transition Care Management Center  
Women Veterans Health Pavilion  
Delegation escorted to the Physical Rehabilitation Department  
- Met by Physical Rehab staff and escorted to "Independence Way" for a tour  
Physical Rehabilitation Discussion begins GC225
- 10:45 - 12:15 pm** Mental Health briefings and tour  
3D East Mental Health Wing  
Tour of the Trauma Services and Mental Health areas  
Brief introduction to the Trauma Services and its work with the Psychosocial Rehabilitation and Recovery Center (PRRC), Community Resource & Referral Center (CRRC) and the Substance Abuse Recovery Program (SARP)
- 12:15 - 1:45 pm** Working lunch begins (SICU Conference Room 2E-202)
- 1:45 pm** Working lunch concludes  
Delegation escorted to the main entrance and departs

# APA Convention Program for Israel Delegates

**Thursday, August 3rd, 2017**

---

8:00 - 9:50 am | Convention Center, Room 154A *[Optional]*

**SKILL BUILDING SESSION. Moving Theory to Practice - Hands-On Approaches to Cognitive Remediation in Older Adults.** Chair: Allison Bielek, PhD; Participants: Alden Gross, PhD, MPH, Angela Troyer, PhD, Kristy Nielson, PhD

8:00 - 9:50 am | Convention Center, Room 151A *[Optional]*

**SKILL BUILDING SESSION. Developmental Perspective On Optimizing Outcomes for Individuals with Autism Spectrum Disorder.** Chair: Gael Orsmond, PhD; Participants: Connie Kasari, PhD, Laura Anthony, PhD, Carol Schall, PhD

10:00 - 11:50 am | Convention Center, Room 140A *[Optional]*

**SYMPOSIUM. Are There Lessons Learned from Neuroplasticity for Rehabilitation?** Chair: Gitendra Uswatte, PhD; Participants: Preston Williams, PhD, Lynne Gauthier, PhD, John Whyte, PhD

10:00 - 11:50 am | Convention Center, Room 151B *[Optional]*

**COLLABORATIVE SYMPOSIUM. Innovative Intervention Program for Veterans with Neurological Conditions and Their Families.** Chair: Katherine Judge, PhD; Participants: Amy Jak, PhD, Katherine Judge, PhD, David Bass, PhD, Lisa Brenner, PhD

10:00 - 10:50 am | Convention Center, Room 151A *[Optional]*

**COLLABORATIVE SYMPOSIUM. Decisional Informatics—Using Algorithms for Assessment and Treatment.** Chair: Robert Bilder, PhD; William Bosi, PhD, Jimmy Choi, PhD

12:00 - 12:50 pm | Convention Center, Room 208 *[Optional]*

**SYMPOSIUM. Federal Funding for Rehabilitation Research.** Chair: Alison Cernich, PhD; Participants: Shirley Groer, PhD, Leslie Caplan, PhD, Alison Cernich, PhD

1:00 - 2:50 pm | Marriott Marquis Washington, DC Hotel/Hotel Archives Meeting Room, Level 4  
**Division 22 Executive Committee Meeting**

3:00 - 3:50 pm | Marriott Marquis Washington, DC, Marquis Salons 12 and 13  
**Reception for International Visitors**

Hosted by APA's Committee on International Relations in Psychology (CIRP), APA's International Division (Div. 52) and the Office of International Affairs.

4:00 - 4:25 pm | Marriott Marquis Washington, DC Hotel/Congress Room Meeting Level 4

**Division 22 Presidential Address**

Evidence-Based Rehabilitation Psychology Practice: How Division 22 Strategic Planning Can Move the Field Forward. Speaker: Lisa Brenner, PhD

4:25 - 4:50 pm | Marriott Marquis Washington, DC Hotel/Congress Room Meeting Level 4

**Division 22 Fellows Address**

5:00 - 6:40 pm | Convention Center, Ballroom Level 3

**APA Keynote Opening Address**

Daniel Kahneman, PhD. Chair: Antonio Puente, PhD

7:00 - 8:50 pm | Marriott Marquis Washington, DC Hotel/Archives Meeting Room Level 4

**Social Hour & Awards Ceremony**

Hosted by Division 22, the American Board of Rehabilitation Psychology (ABRP) & the APA Committee on Disability Issues in Psychology (CDIP)

## Friday, August 4th, 2017

---

9:00 - 10:50 am | Convention Center/Room 101 Street Level

**CONVERSATION HOUR BY THE ISRAEL AND US DELEGATION.** Development of International Collaboration in Rehabilitation Psychology - Lessons Learned Through the Israel and U.S. Exchange Program. Chairs: Yotam Ben-Shats, MA & Connie Sung, PhD; Participants: Hila Cohen, PhD, Adi Granat, PhD, Eyal Heled, Keren, PhD, Serebro-Sorek, MA, Limor Sharoni, MA, Gil Suzin, MA, Amir Zendakowich, MA, Lisa Brenner, PhD, Jacob Chan, PhD, Tamar Press, PsyD, Marlene Vega, PsyD.

9:00 - 9:45 am            Israel Delegates Presentation

9:45 - 10:30 am        U.S. Delegates Presentation

10:30 - 10:50 am      Questions/Answers - Discussion with participants & audience

11:30am - 1:30 pm | Washington Marriott Marquis, 2nd Floor, Suite 2-038

**LUNCHEON AND POSTER PRESENTATIONS with ISRAELI DELEGATION**

1:30pm - 3:00 pm | Washington Marriott Marquis, 2nd Floor, Suite 2-038

**INTERNATIONAL COMMITTEE MEETING - Exploration of International Collaborative Projects**

3:00pm - 4:00 pm | Washington Marriott Marquis, 2nd Floor, Suite 2-038

**EARLY CAREER PSYCHOLOGISTS SPECIAL INTEREST GROUP MEETING**

4:00pm - 6:00 pm | Washington Marriott Marquis, 2nd Floor, Suite 2-038

**EARLY CAREER PSYCHOLOGISTS AND STUDENT JOINT SOCIAL HOUR**



## Saturday, August 5th, 2017

---

8:00 - 8:50 am | East Salon C/Street Level *[Optional]*

**COLLABORATIVE SYMPOSIUM. Rehumanizing Addiction through Education, Policy and Practice.** Chairs: Lindsey Hopkins, PhD, Sarah Raskin, PhD, Participants: Scott Kellogg, PhD, Douglas Marlowe, JD, PhD; Laura Holt, PhD, Rebecca Schacht, PhD *[CC East Salon C/Street Level]*

10:00 - 10:50 am | Convention Center, Room 102A *[Optional]*

**SYMPOSIUM. Perspectives on Disclosing Diverse Identities as a Psychologist—From Silence to Liberation.** Chair: Eric A. Samuels, PsyD, Megan Carlos, PhD, Participants: Sonya Kim, PhD, Erin Liebich, PsyD, Emily Lund, PhD, Jeffrey Yeung, MA

12:00 - 12:50 pm | Convention Center, Room 209A *[Optional]*

**SYMPOSIUM. Community Participation and Inclusion for Individuals with Psychiatric Disabilities.** Chair: Mark Salzer, PhD, Zlatka Russinova, PhD, Participants: Uma Milner, PhD, Sally Rogers, PhD, Eugene Brusilovskly, PhD, Zlatka Russinova, PhD

1:00 - 1:50 pm | Convention Center, Halls D and E *[Optional]*

**POSTER SESSION**

## Sunday, August 6th, 2017

---

8:00 - 8:50 am | Convention Center, Room 144B *[Optional]*

**SYMPOSIUM. Application of Network Medicine and Well-Being to Health and Correctional Psychology.** Chair: Barry Nierenberg, PhD; Participants: Barry Nierenberg, PhD, Alexia Holovatyk, PhD, Sarah Cooper, PhD

9:00 - 9:50 am | Convention Center, East Salon F/Street Lvl *[Optional]*

**PAPER SESSION. Language, Culture and Rehabilitation Psychology.** Participants: Janet Titus, PhD, Julie Ancis, PhD, Anjali Forber-Pratt, PhD, Ann Landes, PhD

10:00 - 10:50 am | Convention Center, Room 158 *[Optional]*

**SYMPOSIUM. Innovations in the Application of Resilience and Well-Being Theory to Rehabilitation Psychology.** Chair: Scott McDonald, PhD; Participants: Alexia Holovatyk, PhD, Nancy Hsu, PhD, Vanessa Laird, PhD. Discussant: Timothy Elliott, PhD

11:00 - 11:50 am | Convention Center, Room 204C *[Optional]*

**PAPER SESSION. Self-Stigma and Community Inclusion for Adults with Mental Illness.** Participants: Alan Tong, PhD, Floria Chio, PhD, Uma Milner, PhD

# TOPICS OF POSTER PRESENTATIONS BY ISRAELI DELEGATION

## **Chronic Headaches and PTSD after Pediatric Mild TBI**

Adi Granat & Relocca Sphere

The Pediatric Unit at Loewenstein Rehabilitation Hospital, Israel.

## **The Tactual Span: A New Paradigm for Assessing Working Memory in the Tactile Modality: A Validation Study**

Eyal Heled<sup>1,2</sup>, Shulamit Rotberg<sup>1</sup>, Roman Yavich<sup>3</sup>, & Dan Hoofien<sup>4</sup>

<sup>1</sup> Department of Behavioral Sciences, Ariel University, Israel.

<sup>2</sup> Department of Neurological Rehabilitation, Sheba Medical Center.

<sup>3</sup> Department of Mathematics, Ariel University, Israel.

<sup>4</sup> Department of Psychology, the Hebrew University of Jerusalem.

## **Reversing Cognitive Aging with Hyperbaric Oxygen Therapy (HBOT)**

Gil Suzin, Amir Hadanny, Kobi Dagan, Ido May-Raz, & Shai Efrati

The Sagol Center for Hyperbaric Medicine and Research at Assaf Harofeh Medical Center

## **The Neuropsychological Outcome of Cerebellar Mutism Syndrome following Pediatric Posterior Fossa Tumors**

Hila Cohen, Smadar Patael, Yael Galin, Tamar Silberg, Jaana Ahonniska-Assa, Janna Landa, & Amichai Brezner

Neuropsychology Unit, Pediatric Rehabilitation Department, Edmond and Lily Safra Children's Hospital, The Chaim Sheba Medical Center.

## **Post-traumatic Stress Disorder after Traumatic Brain Injury - Adjusted Assessment and Psychotherapy Model**

Limor Sharoni & Ayala Bloch

The National Institute for the Rehabilitation of the Brain Injured, Israel

## **Applying Rehabilitation Approach in Eating Disorders Interventions**

Amir Zendakovich<sup>1,2</sup>, Dov Albukrek<sup>2</sup>, David Dvir<sup>2</sup>, Jean-Jacques Vatine<sup>2,3</sup>, & Rafi Heruti<sup>2,3</sup>

<sup>1</sup> The Agam Institute for the treatment and rehabilitation of eating disorders, Reuth Rehabilitation Hospital

<sup>2</sup> Reuth Rehabilitation Hospital

<sup>3</sup> Sackler Faculty of Medicine, Tel Aviv University

## **Israeli Psychological Association – Rehabilitation Division (IPA-Rehab Div): Major Challenges in Training and Leadership of Future Israeli Rehabilitation Psychologists.**

Yotam Ben Shats<sup>1,2,3</sup>, Omer Porat<sup>1</sup>, Dani Kafri<sup>1</sup>, & Meir Naaman<sup>1,4</sup>

<sup>1</sup> Israel Psychological Association

<sup>2</sup> Psychology Department, Haifa University,

<sup>3</sup> Department of Neuro-Oncology, Sheba Medical Center

<sup>4</sup> Sackler Faculty of Medicine, Tel Aviv University

# Israel Delegates



**Yotam Ben-Shats, MA** is the representative of the rehabilitation psychology division of the Israeli Psychological Association (IPA) board. His PhD study, supervised by Hadas Okon-Singer, PhD and Bat-Sheva Hadad, PhD from Haifa University, uses a psychophysics perspective to investigate the relationship between anxiety and perceptual biases. Yotam is also a rehabilitation psychologist intern at the neurological rehabilitation unit of the Sheba Medical Center in Ramat-Gan, Israel, where he specializes in psychotherapy, cognitive rehabilitation and neuropsychological assessment of adults suffering from SCI, TBI and various neurological disorders. Most of his clinical work focuses on the neuro-oncology population, people who suffer from benign/malignant brain/

spinal tumors and people who suffer neurological deficits due to cancer treatments. Among his special interests are end of life issues and treatment of family members and caregivers.



**Hila Cohen, PhD** received her doctoral degree in Rehabilitation Neuropsychology from Ben-Gurion University of the Negev. During her internship, Hila worked with children with a variety of congenital and acquired brain injuries and with adults suffering from traumatic brain injury. Hila is a Senior Neuropsychologist at the Pediatric Neuropsychology Unit, Edmond and Lili Safra Children's Hospital, Sheba Medical Center, since 2012. She both administers and supervises neuropsychological assessments for children with acquired brain injuries (mostly TBI, CVA and Posterior Fossa tumors) and congenital neurodevelopmental disorders (mostly CP). Hila specializes in evaluations of children with severe language and physical impairments. In

addition, she performs psychotherapy for children and their parents, she delivers lectures on pediatric rehabilitation and neuropsychological assessment and she is involved in research conducted in the department. Her main focus of interest is the emotional, social and neuropsychological outcomes of posterior fossa tumors in children.



**Adi Granat, PhD** received her doctoral degree in rehabilitation-clinical psychology from Bar-Ilan University, Ramat-Gan, Israel. She specializes in clinical psychology and has acquired expertise in rehabilitation psychology and neuropsychology. Adi is a senior psychologist at Loewenstein Hospital Rehabilitation Center, where she has been working for the last 11 years. She supervises interns and students in psychotherapy and diagnosis on the pediatric rehabilitation service (Department and Outpatient clinics). Her clinical work is focused on neuropsychological assessment and treatment of children and youth, who have experienced various types of injuries and diseases. During her work she combines the following therapeutic methods: cognitive-behavioral therapy

(e.g. PE, ACT), EMDR, hypnosis and family/parental interventions. Her main research and treating interest includes TBI, PTSD, PCS and unexplained medical symptoms in the field of pediatric rehabilitation. Additionally, Adi teaches graduate courses in rehabilitation psychology (e.g. theories,

assessments and psychotherapy methods of pediatric rehabilitation) and supervises thesis works of MA students. She is presently researching subjects such as posttraumatic growth, the predictors for developing PTSD, the relationship between exposure to trauma and somatization among families and children.



**Eyal Heled, PhD** is a faculty member in the Department of Behavioral Sciences at Ariel University – Rehabilitation Psychology Graduates Program; Head psychologist of the Neurological Rehabilitation Unit at the Rehabilitation Hospital of Sheba Medical Center, which includes an in-patient Neurological Rehabilitation Department (SCI, Stroke, MS, GBS) and three Day Rehabilitation Units specialize in populations with SCI, TBI, PD and neuro-oncology. He also Practices a private clinic for rehabilitation and non-rehabilitation patients. His educational background includes Ph.D from the Hebrew University of Jerusalem and additional clinical trainings (PE, CBT, NLP, Bio-Feedback, Hypnosis, Schema-

Therapy, and Eating Disorder studies). Eyal's clinical work comprises of supervision of interns from the Rehabilitation Hospital and practicum M.A students at Ariel University, in psychotherapy, neuro-cognitive rehabilitation and neuropsychological assessment. He also treats patients in the ward and in ambulatory setting, and have a special interest in applying psycho-dynamic view for understanding rehabilitation patients' subjective experience. His research interests focus on improving neuropsychological evaluation tools for rehabilitation populations (e.g. TBI, stroke, and MS), Executive Function, and cognitive characteristics of eating disorders. Eyal has published number of papers in these fields and also supervise thesis and doctoral students.



**Keren Serebro-Sorek, MA** is a senior rehabilitation psychologist and a clinical neuropsychologist. Her educational background includes a master degree in neuropsychology from the Hebrew University in Jerusalem, an undergraduate degree in Psychology and Communication from Haifa University. Keren worked for 12 years in the National Institute for the Rehabilitation of the Brain Injured in Tel Aviv. During that time she provided psychological and cognitive rehabilitation therapy, neuropsychological assessments and managed rehabilitation programs. For the last six years Keren is the head rehabilitation psychologist at the Tel Aviv Sourasky Medical Center. At that capacity she is in

charge of rehabilitation psychologists in a variety of units at the hospital treating acute, sub-acute and chronic patients with diverse medical conditions. Keren also manages the psychological service in the rehabilitation department. Her specific fields of interest are treating PTSD, CRPS and enhancing the training and professional skills of rehabilitation psychologist staff. Keren is also a member of the IPA rehabilitation division and was head of the annual rehabilitation convention committee on the topic of trauma and rehabilitation in 2015.



**Limor Sharoni, MA** received her master degree in clinical neuropsychology from the Hebrew University of Jerusalem, Israel. She has acquired expertise in rehabilitation psychology and neuropsychology. Limor is a senior psychologist at The National Institute for the Rehabilitation of the Brain Injured, a public non-profit organization dedicated to the neuropsychological and psychosocial

rehabilitation of brain-injured army veterans and civilians, established at 1975. Limor has been working at the Institute for the last 14 years. Seven years ago She established the Gesher-Galilee Center, the northern most branch of It, and has led it since. The branch provides neuropsychological assessment and psychotherapy programs to the Galilee and Golan multicultural population (Jews, Druze, Muslim Arabs, Christian Arabs), suffering acquired brain damage and Psychotherapy for PTSD patients and people with chronic Diseases. Limor also serves as ahead of Occupational assessment and consulting public unit for people after acute or chronic medical conditions. Her main interest includes Neuropsychological rehabilitation, Cognitive Rehabilitation, PTSD, PTSD and TBI co morbidity, Cultural aspects of Rehabilitation Psychology, Occupational assessment and consulting for people after acute or chronic medical conditions. Currently she apply a Ph.D candidacy concerning " PTSD after TBI- adjusted assessment and psychotherapy model", based on her clinical experience.



**Gil Suzin, MA** neuropsychologist, director of the cognitive rehabilitation unit in the Sagol center for Hyperbaric Medicine and Research at Assaf Harofeh Medical Center. Gil, specializes in cognitive rehabilitation methods for patients with neurological impairments attending Hyperbaric Oxygen Treatments (HBOT) after Traumatic Brain Injury (TBI), Cardiovascular Accident (CVA), Anoxic Brain Damage or in cases of mild dementia (i.e. Alzheimer's Disease). Gil is also interested in integrating neuropsychological assessments with neurophysiological measures based on Evoked Response Potential (ERP) and Transcranial Magnetic Stimulation (TMS). His Doctoral research is supervised by

Professor Marius Usher from Tel Aviv University. In his research, he studies aging cognition with emphasis on changing strategies of semantic encoding into visual memory.



**Amir Zendakovich, MA** is the Reuth Rehabilitation Hospital Chief Psychologist and the Director of the Reuth Rehabilitation Psychology Department. In addition to these positions, he is the Director of the hospital's Agam Institute for the Treatment and Rehabilitation of Eating Disorders. The Reuth Rehabilitation Hospital is one of Israel's leading rehabilitation and long-term medical facilities. The rehabilitation departments include three in-patient departments, neurological and orthopedic rehabilitation, and a multi-discipline day rehabilitation unit that specializes in rehabilitation of a variety of pain syndromes, including CRPS. The Agam Institute provides comprehensive professional care to adolescents and adults with anorexia, bulimia, binge eating

disorder and obesity. Amir's educational background includes Masters' degrees in Rehabilitation Neuropsychology from the Tel-Aviv Yafo Academic College, and from the Cohn Institute for the History and philosophy of science and ideas, Tel-Aviv University. As head psychologist, Amir supervises interns from the Rehabilitation Psychology Department and practicum M.A students. His research interests focus on group therapy models: applying group therapy to develop better management skills for staff burnout, and spearheading an integrative approach in group therapy for patients with eating disorders. Amir also practices in his private clinic for rehabilitation patients (CVA, TBI, pain syndromes) and for patients with eating disorders.



# U.S. Delegates



**Lisa A. Brenner, PhD** is a Board Certified Rehabilitation Psychologist, and a Professor of Psychiatry, Neurology, and Physical Medicine and Rehabilitation (PM&R) at the University of Colorado, Anschutz School of Medicine, and the Director of the Veterans Integrated Service Network (VISN) 19 Mental Illness Research, Education, and Clinical Center (MIRECC). She is the Research Director for the Department of PM&R. Dr. Brenner is also a Fellow of the American Psychological Association, Division 22, Rehabilitation Psychology. Her primary area of research interest is traumatic brain injury, co-morbid psychiatric disorders, and negative psychiatric outcomes including suicide. She serves as the Research Division Director for the American Association of Suicidology, and an

Associate Editor of the Journal of Head Trauma Rehabilitation. Dr. Brenner has numerous peer-reviewed publications, participates on national advisory boards, and is currently co-authoring a book regarding neurodisability and suicide. Examples of grant funded projects include: A Brief Intervention to Reduce Suicide Risk in Military Members and Veterans (U.S. Army Medical Research and Materiel Command Military Operational Medicine Research Program), Window to Hope: Evaluating a Psychology Treatment for Hopelessness Among Veterans with Traumatic Brain Injury (Military Suicide Research Consortium), and Health and Wellness Intervention for Individuals with TBI (National Institute on Disability and Rehabilitation Research).



**Jacob Yuichung Chan, PhD** is an associate professor in the Department of Counseling Psychology, Social Psychology, and Counseling at Ball State University. He is a member of the American Psychological Association (APA) Division 22 (Rehabilitation Psychology) and the co-chair of its Diversity Committee. He is a graduate of the University of Wisconsin - Madison (B.A., M.S., PhD). Jacob teaches graduate courses in counseling and rehabilitation (e.g. theories, research methods, psychosocial aspects of disability) and supervises the research and clinical practice of students in the APA-accredited Counseling Psychology doctoral program and the CACREP-accredited Clinical Mental

Health Counseling/ CORE-accredited Rehabilitation Counseling master's programs. His research interests include the psychosocial aspects and vocational issues of people with chronic illness and disabilities, international and cross cultural studies, positive psychology, help-seeking behaviors of veterans and people with disabilities, integration of neuroscience and rehabilitation, aggression, and training.



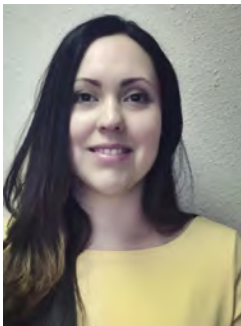
**Tamar Press, PsyD** received her doctoral degree in School/Child Clinical Psychology from Yeshiva University, Ferkauf Graduate School of Psychology. Her dissertation was on White Racial Identity Development in a graduate school population. Her undergraduate degree in Psychology and Art History was earned at The George Washington University in Washington, DC. Tamar is a Senior Psychologist at The Rusk Institute of Rehabilitation Medicine, New York University Langone Medical Center in New York City, where she has worked for

the past 12 years. She supervises interns in psychotherapy on the Adult Outpatient Service. Her special interests include neuropsychological assessment and treatment (individual and group) of acquired brain injury, stroke, and cancer. She incorporates multiculturalism and family systems theory in her work. Tamar holds dual citizenship of Israel & the USA, is profoundly connected to the land and people of Israel.



**Connie Sung, PhD** is an assistant professor of rehabilitation counseling and co-director of Spartan Project SEARCH. Her educational background includes rehabilitation psychology, neuropsychology and occupational science. Her research interests focus on biopsychosocial factors associated with successful transition, psychosocial and employment outcomes as well as quality of life of individuals with neurodevelopmental disabilities. Sung is also a Mary Switzer Fellow awarded by the National Institute on Disability, Independent Living, and Rehabilitation Research (NIDILRR). She has published close to 40 refereed journal articles and book chapters. She is a principal investigator of several community-based participatory research projects, including evaluation of

intervention strategies to improve career development and employment outcomes of transition-aged individuals with autism and/or epilepsy. As the co-director of Spartan Project SEARCH, Sung and her students provide support to students with intellectual/developmental disabilities who participate in internship experiences across the MSU campus. She also conducts research to examine the impact of the program on transition outcomes of participating students and campus climate/attitudes toward individuals with disabilities.



**Marlene Vega, PsyD** is a rehabilitation neuropsychologist at Baylor Institute for Rehabilitation in Dallas, TX serving adults with stroke, SCI, TBI and complex medical conditions. Her clinical work is focused on cognitive assessment and treatment, psychotherapy for emotional adjustment issues related to disability and chronic health conditions, and collaboration with transdisciplinary rehabilitation teams. She is a clinical research consultant and member of institutional councils aimed at program development, accreditation, community engagement and education. Research interests include health literacy and health beliefs of patients and caregivers of patients undergoing inpatient rehabilitation; transdisciplinary and transcultural models of care in rehabilitation; and cultural

competence development in rehabilitation providers. She is Member-at-Large to the American Psychological Association (APA) Division of Rehabilitation Psychology and to the American Congress of Rehabilitation Medicine (ACRM), Stroke ISIG. Her postdoctoral training at Rancho Los Amigos NRC was focused on stroke, diabetes amputation, TBI and epilepsy with immigrants. She completed pre-doctoral training in rehabilitation neuropsychology and behavioral medicine at Lancaster General Hospital/Penn Medicine, and obtained a doctorate in Clinical Psychology from the Minnesota School of Professional Psychology.





