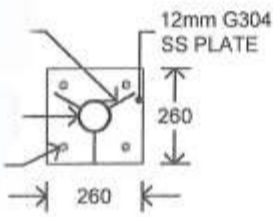


SAFE WORKING LOAD 140kg



BASE PLATE DETAIL
1:20

ELEVATION
1:20

McKenzie Burridge
C Associates Pty Ltd
CIVIL & STRUCTURAL
CONSULTING ENGINEERS

PO BOX 503
17 WEBBERS ARCADE
133 PRINCE STREET
GRAFTON NSW 2460
(02) 6643 2118
www.mckenzieburridge.com.au
office@mckenzieburridge.com.au
ABN 19 092 914 595

DRAWING TITLE
SLING HOIST DETAILS

APPROVED
[Signature]

DRAWING NUMBER
14-232-SK1

CLIENT WYMO LIFTING AIDS

DATE MARCH 2015

REVISIONS | A | | |