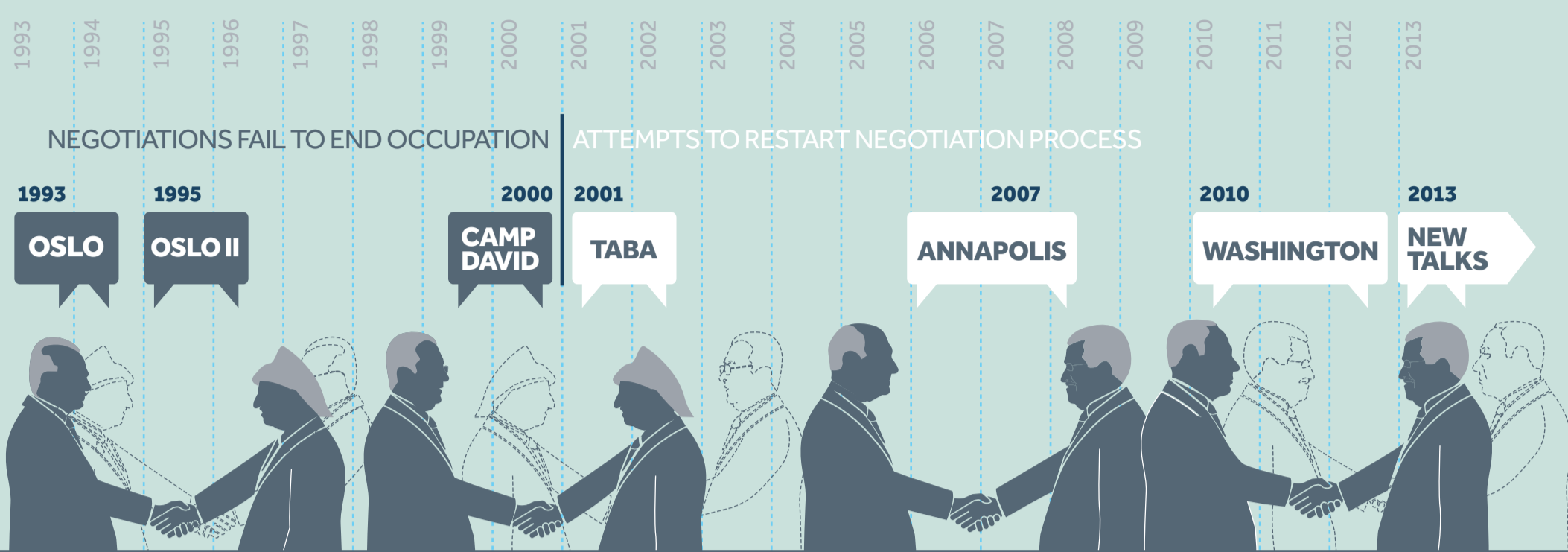
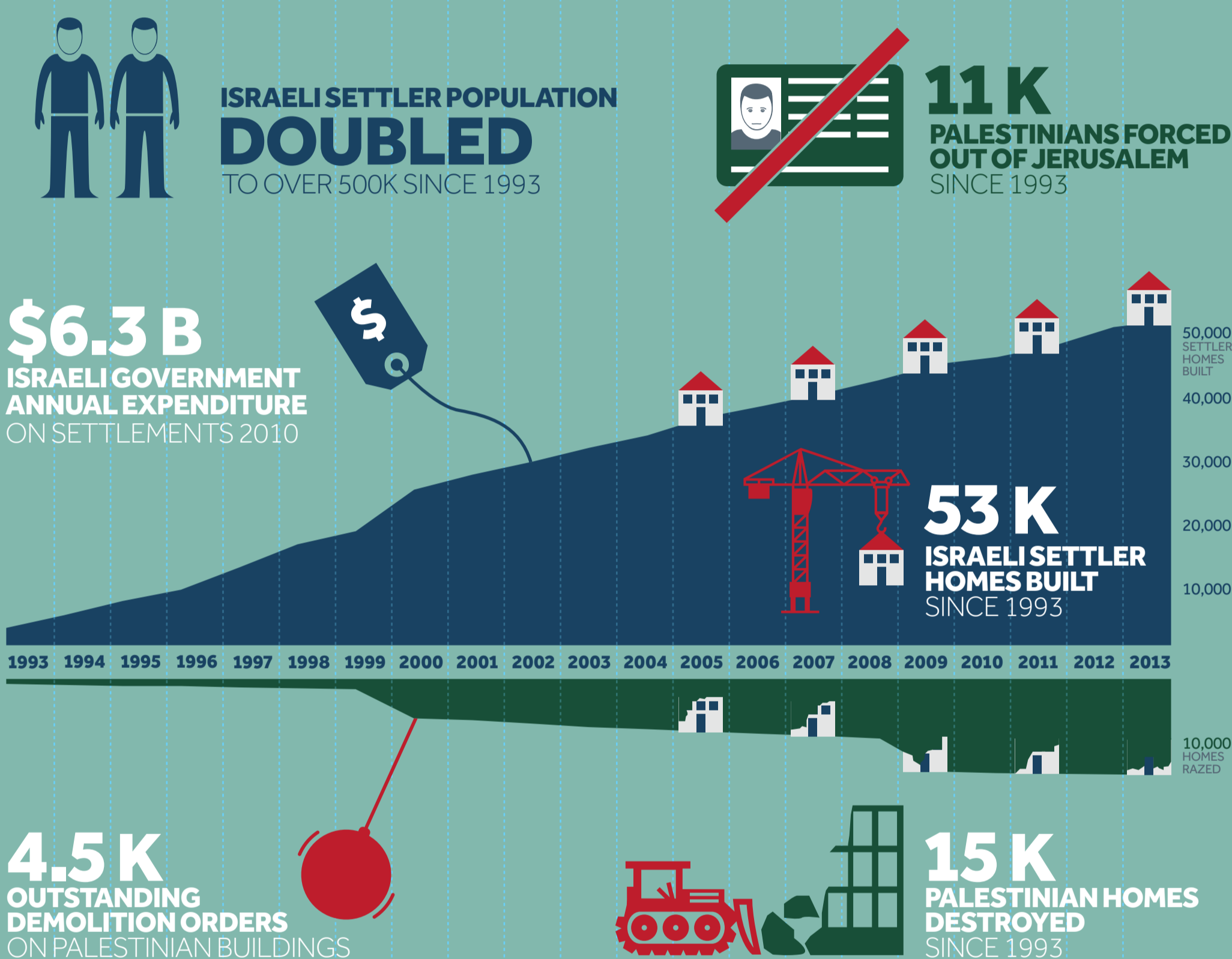


# 20 YEARS OF TALKS

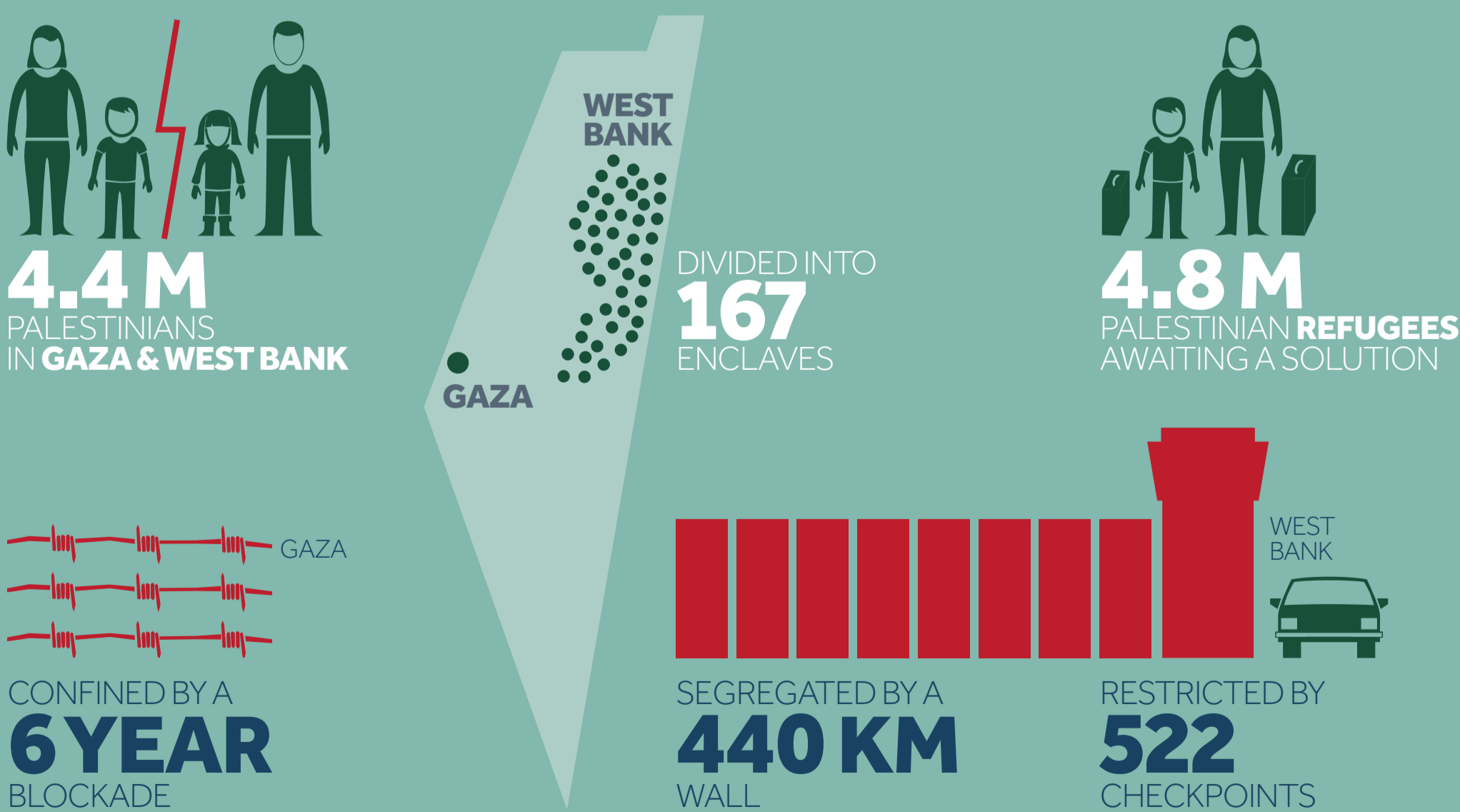
## KEEPING PALESTINIANS OCCUPIED



### ISRAELI SETTLEMENTS & PALESTINIAN DISPLACEMENT



### ISRAELI RESTRICTIONS & PALESTINIAN FRAGMENTATION



#### SOURCES

Data aggregated from B'Tselem, FMEP, Guardian, ICAHD, Israeli CBS, OCHA, Palestinian CBS, Peace Now, Shir Hever and UNRWA

Talks timeline <http://bit.ly/talks-timeline> | Settlement units <http://bit.ly/units-fmep> | <http://bit.ly/units-peace-now>  
<http://bit.ly/units-icbs> | Settler population <http://bit.ly/settler-pop> | Settlement subsidy <http://bit.ly/subs-hever>  
 House destruction <http://bit.ly/idp-palestine> | <http://bit.ly/stats-btselem> | Jerusalem IDs revoked <http://bit.ly/ej-revoked>  
 Demolition orders (3,000 West Bank, 1,500 E. Jerusalem) <http://bit.ly/demo-opt> | <http://bit.ly/unrwa-refugees>  
 OPT Palestinian population <http://bit.ly/population-opt> | Registered refugees <http://bit.ly/unrwa-refugees>  
 Enclaves (166 West Bank + 1 Gaza) <http://bit.ly/enclaves-opt> | Checkpoints <http://bit.ly/checkpoints-wb>  
 Wall length <http://bit.ly/wall-wb> | Gaza blockade <http://bit.ly/blockade-gaza>