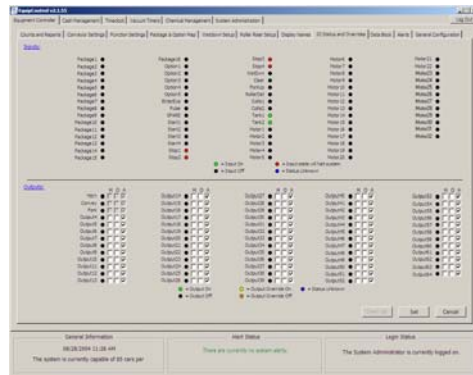


EQUIPMENT CONTROLLER 64



The washlink equipment controller is simply the best equipment controller in the car wash industry. Proven industrial PLC technology combined with a familiar Windows interface provide the car wash operator with unmatched reliability and ease of use.

Features and Benefits:

- 64 functions standard per enclosure with unlimited expansion
- industry proven components from siemens worldwide and dell computers
- pc windows user screens for equipment setup, car counts, fault alerts, etc
- hand-auto switches for all functions
- double pole 15amp isolation relays on all functions
- all functions individually fused 24vac output with blown fuse indicators
- simulated pulse, look back functions, conveyor/equipment auto off
- start-up/warning horn function, wet down function
- built in anti collision controls
- adjust "on the fly" (no shutting down car wash for system changes)
- roller raiser controls, with anti-jam feature
- e-mail alerts for counts and faults, and worldwide internet access
- corrosion and rust proof enclosure with built in key lock
- optional enter system, pulse system, entry button console
- hardened industrial ethernet communications
- stays operating even with a loss of pc connection
- oversized wire ways, for easy installation
- seamless integration with the washlink transaction terminal for complete cash management, reporting and labor
- ul listed