



**ECAdjuster
User Interface**
(Basic user functions)

Tech Guide & Tutorial

WASHLINK SYSTEMS

Washlink Systems ECAadjuster User Interface

(Basic user functions)

This document provides comprehensive information for using the ECAadjuster GUI.

The ECAadjuster has the ability to add and configure multiple functions within your car wash tunnel.

When emailing or calling for assistance, you must have the following information available:

Location Name: _____

Contact Person: _____

Contact Phone: _____

Distributor Name: _____

COPYRIGHT 2015 Washlink Systems. All rights reserved.


THIS DOCUMENT IS THE EXCLUSIVE PROPERTY OF WASHLINK SYSTEMS AND IS PREPARED ONLY FOR USE BY THE COMPANY PURCHASING THE EQUIPMENT. EDITING, COPYING, DISTRIBUTING, AND/OR SELLING THIS DOCUMENT IS STRICTLY PROHIBITED WITHOUT PRIOR WRITTEN CONSENT FROM WASHLINK SYSTEMS. WASHLINK SYSTEMS RESERVES THE RIGHT TO EDIT THIS DOCUMENT IN ANY MANNER DEEMED NECESSARY, AT ANY TIME, AND WITHOUT PRIOR NOTICE.

Table of Contents


1. Explanations of Tech Guide	3
2 Features of the ECAdjuster Interface	4
3. ECAdjuster User Interface Basics	5
4. Explanation of Tutorial	6
5. Starting ECAdjuster	7
6. Login	9
7. Username and Passwords	10
8. ECAdjuster Homepage	11
9. File Menu	12
10. Inputs Menu	13
11. Outputs Menu	14
12. Tunnel Configuration Menu	15
13. Troubleshooting Menu	17
14. Appendix	18


1 Explanation of the Tech Guide


Welcome to the Washlink Systems [ECAadjuster User Interface Tech Guide](#). Understanding the basic functions of the ECAadjuster is not difficult. Washlink Systems uses basic Microsoft Windows functions to adjust any functions within the ECAadjuster interface. Following this simple and basic tutorial will give you all the basic knowledge necessary to program the Washlink ECAadjuster interface. There is no need to learn any special programming, as this tutorial is designed to provide you a general understanding of the ECAadjuster in plain and simple terms. This will allow you to make any changes to the ECAadjuster simply and easily.

 **WARNING:** Typically the initial configuration of the Washlink ECAadjuster has been preconfigured at the time of installation. Any alteration of the original configuration may effect the way equipment may function within your car wash. Washlink Systems recommends creating a new configuration for testing purposes so not to effect the original configuration at setup.

If you encounter any Washlink Systems ECAadjuster programing issues please contact Washlink Support by either phone +1-408.924.0808 or e-mail support@washlinksystems.com

 This icon identifies a very important piece of information that the editor within the ECAadjuster should be aware of.

 This icon warns the editor that extreme attention to the configuration process should be taken. By editing or altering the configuration that is indicated by a warning may potentially cause unintended consequences. Edit with extreme care. If you have any questions about editing the configuration please contact Washlink Systems Support.

 **WARNING** -This icon indicates that making any changes could possibly cause the Washlink Systems program, network connections, configurations or settings and your car wash not to function in its intended way. Additional changes may cause the you car wash not to operate in its original configuration. Before making any changes it's highly suggested to contact Washlink Systems support team before an intervention is necessary.

2 Features of the ECAdjuster User Interface

Features of Washlink Systems ECAdjuster User Interface Tech Guide:

- This Tech Guide (tutorial) will simply guide you in how to easily use the ECAdjuster using common and basic Microsoft Windows® user interface, familiar and common with all Microsoft Windows® computers.
- How to use the Washlink Systems common and easily programmable functions from the Washlink Server.
- Learn user defined and customizable settings common in all Washlink Systems controls (all Washlink Systems programs use the same user interface or GUI).
- Understanding where to apply a variety independent functions to the car wash systems via the controller for your own personal customizations.
- Each Washlink Systems purchased system offers free basic lifetime support. If at anytime you have questions or need additional technical help not offered within this Tech Guide please contact Washlink Systems support for additional technical support. Contact Washlink Systems support by either phone +1.408.924.0808 or e-mail support@washlinksystems.com.

3 Washlink Systems ECAadjuster Basics

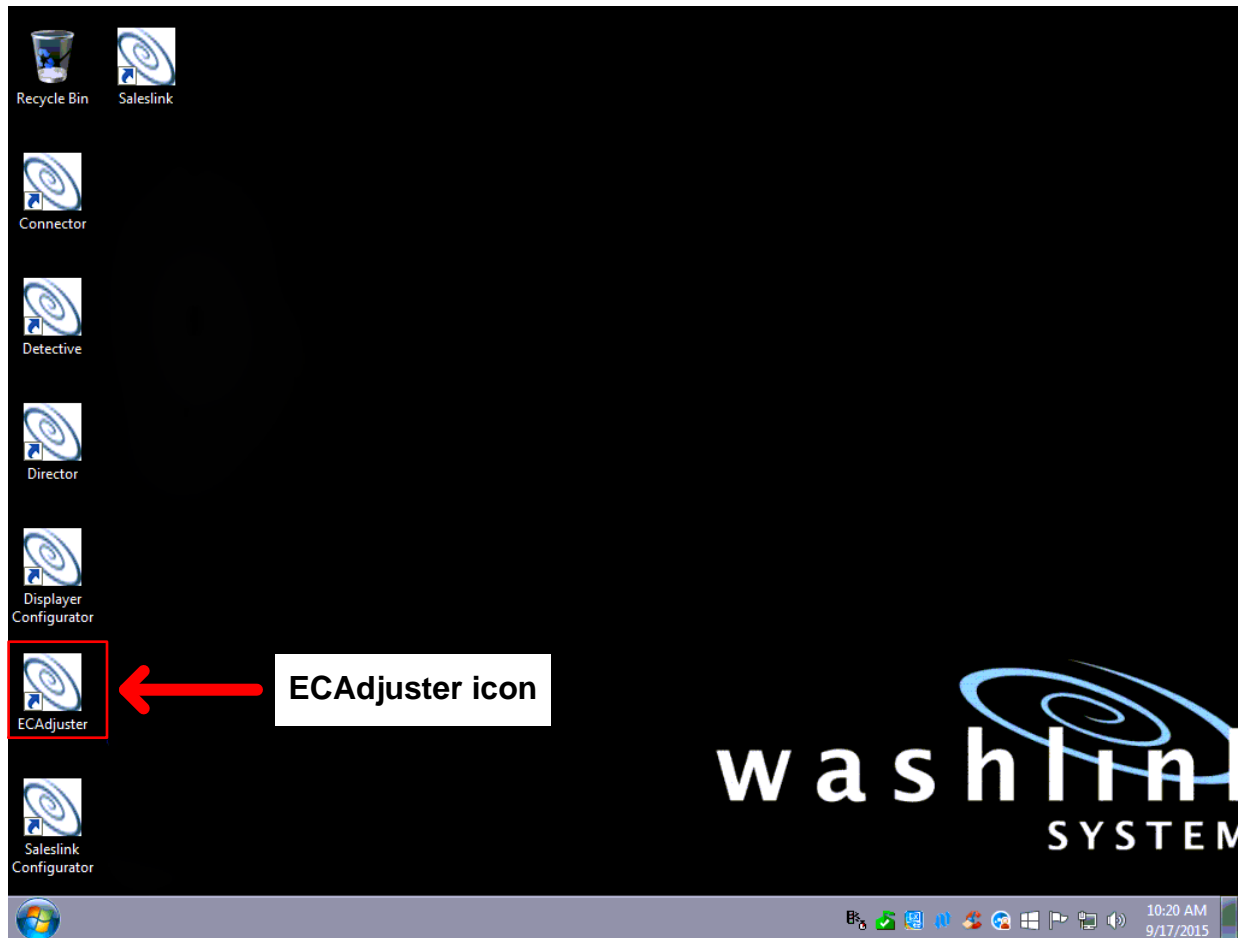
- The Washlink Systems ECAadjuster is installed on and programmed using the Washlink Systems supplied server.
- The Washlink Systems ECAadjuster program must be purchased and installed by Washlink Systems support team on the Washlink Systems server.
- The Washlink Systems ECAadjuster must be connected via WashlinkNET to the equipment and controller.
- The initial configuration of the Washlink ECAadjuster is typically configured for basic setup at time of installation.
- Each Washlink Systems purchased system offers free basic lifetime support. If at anytime you have questions or need additional technical help not offered within this Tech Guide please contact Washlink Systems support for additional technical support. Contact Washlink Systems support by either by phone +1.408.924.0808 or e-mail support@washlinksystems.com.

4 Explanation of Tutorial

- In this tutorial we're going demonstrate each basic function of the Washlink Systems ECAjuster interface (common with all Washlink Systems programs).
- We will give the user simple explanations of each functionality of the interface.
- By understanding the basic functions of the interface you will understand how to change and adjust functions within the ECAjuster.
- Understanding the Washlink Systems user interface will increase your comfortability in making changes to the ECAjuster and it functionality.
- If additional support is necessary contact Washlink Support by phone +1.408.924.0808 or by e-mail support@washlinksystems.com

5 Starting ECAjuster

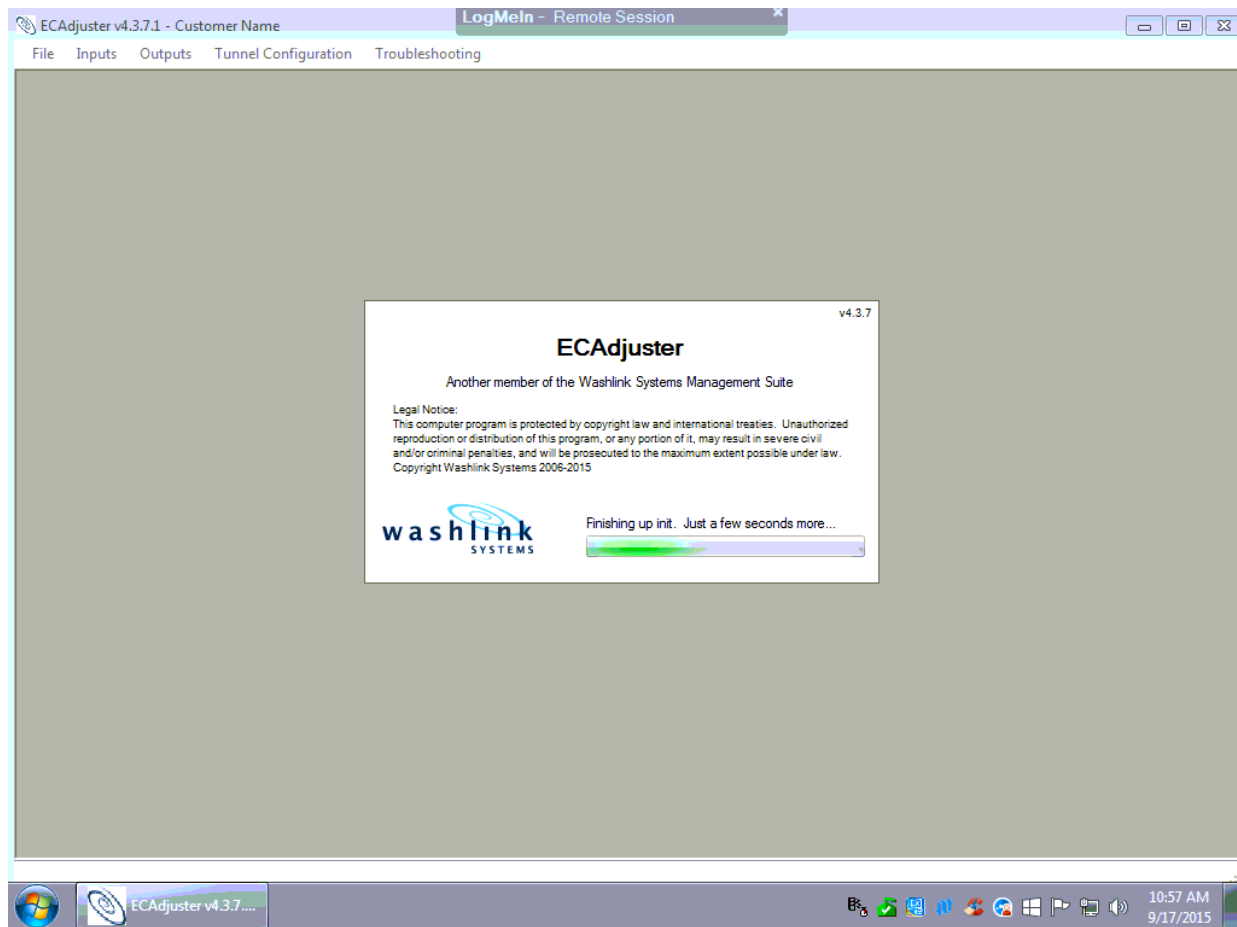
- What you'll see is the standard un-altered Microsoft Windows® desktop home screen user interface every Windows user is familiar with.
- We're going to use the desktop icon called "ECAjuster".
- Double click on the "ECAjuster" to start the program.



! Your desktop screen may look slightly different than the desktop screen demonstrated on this page. The functions will remain the same even if the desktop looks different.

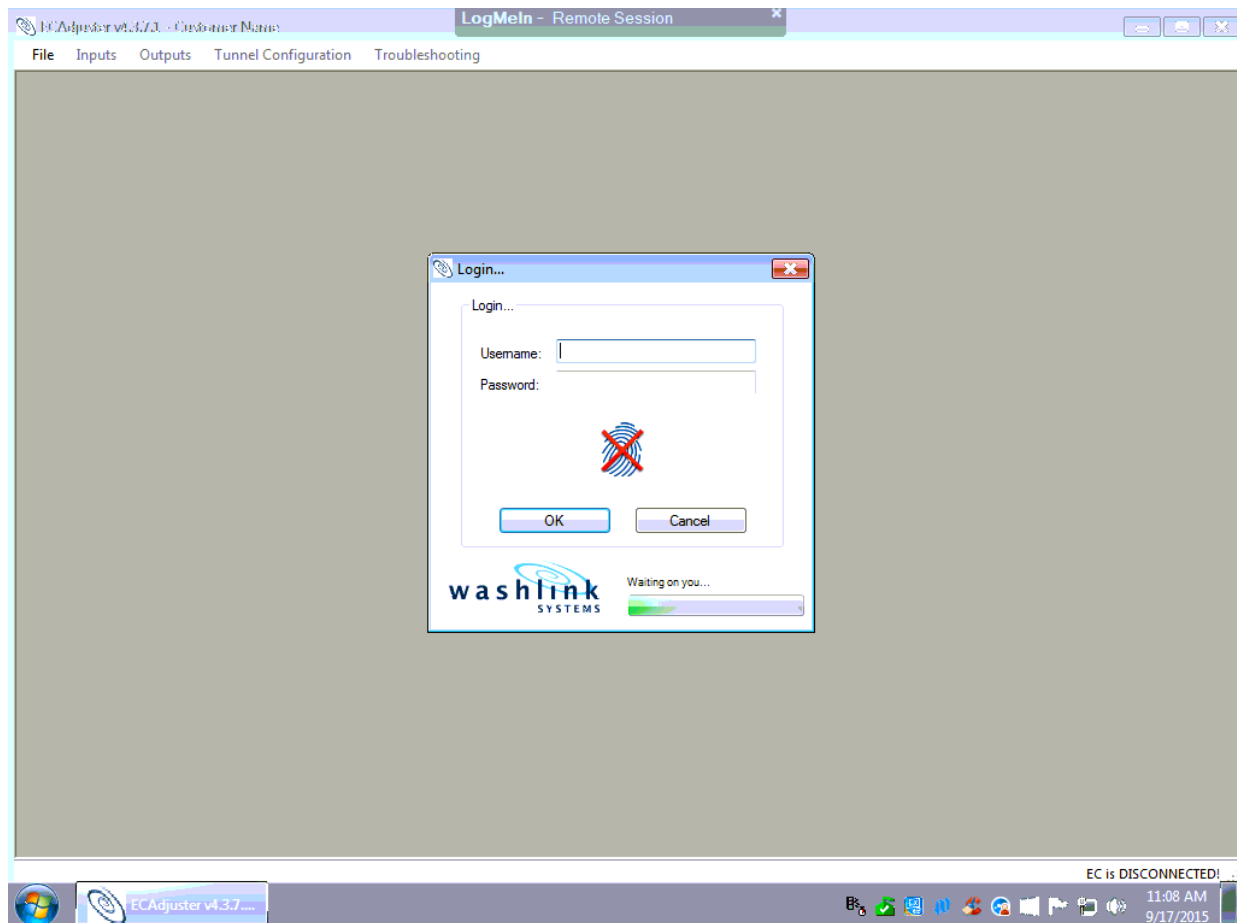
5 Starting ECAadjuster continued


- The ECAadjuster program will start and connect to the current database installed and setup previously by the Washlink Systems support team.




6 Login

- Once the ECAdjuster has loaded a logon popup will appear.
- Usernames and passwords are necessary to access the ECAdjuster program.
- Usernames and Passwords are used to secure the ECAdjuster from unwanted tampering.



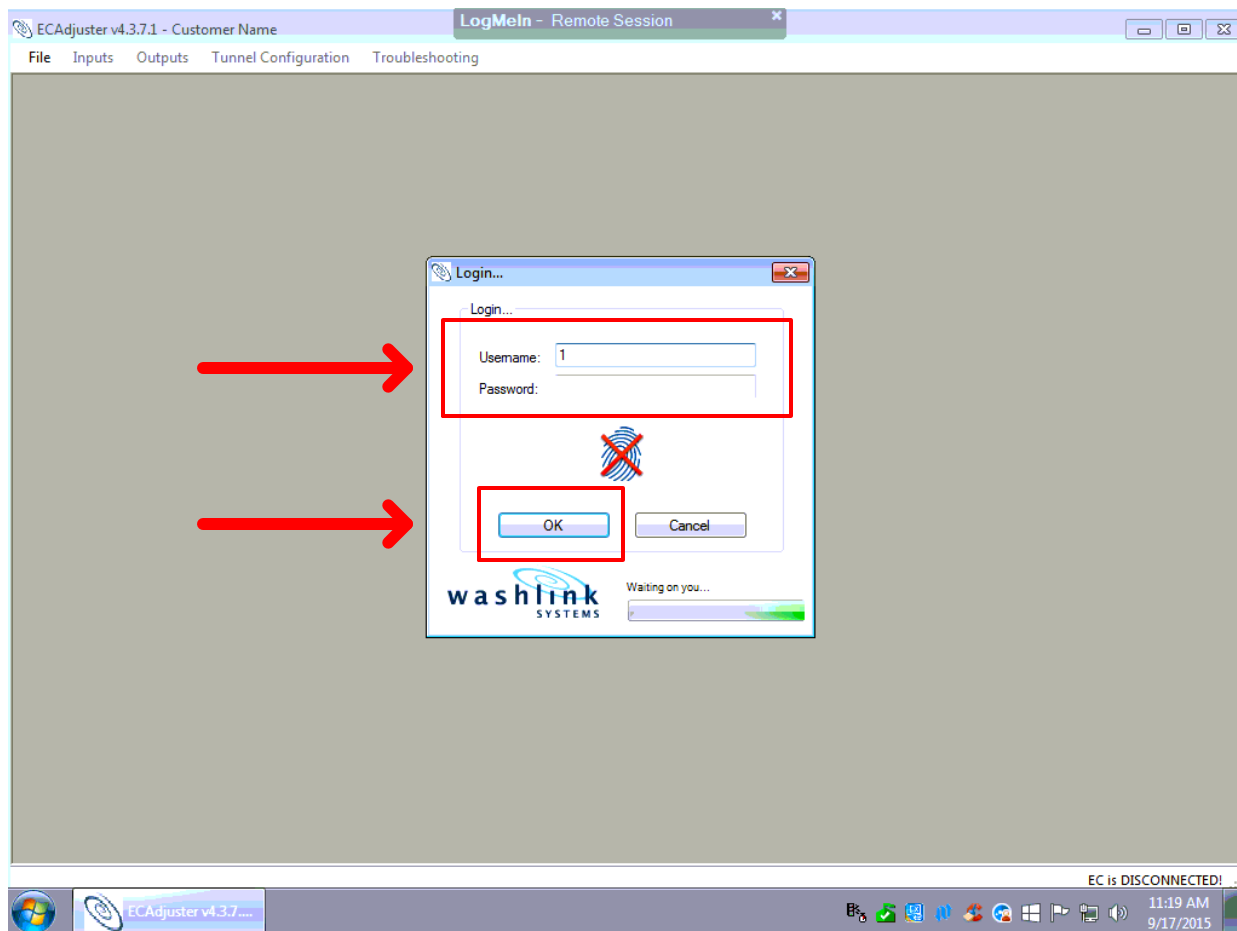
 No one without the proper authentication has access to any Washlink Systems Suite of programs to avoid any unwanted changes to the car wash equipment settings.

Only authorized users have access to the programs. You the user can set who has access by creating additional users with their own usernames and passwords or if purchased the finger print reader. Please review the Tech Guild “Creating Usernames and Passwords” for further assistance.

 Washlink Systems recommends using secure username, passwords or fingerprints for maximum security. **DO NOT MAKE THOSE CHANGES AT THIS TIME.**

7 Username and Password

- The default Login settings are;
 Username 1
 Password (leave blank and do not enter anything)
- Press OK when entered

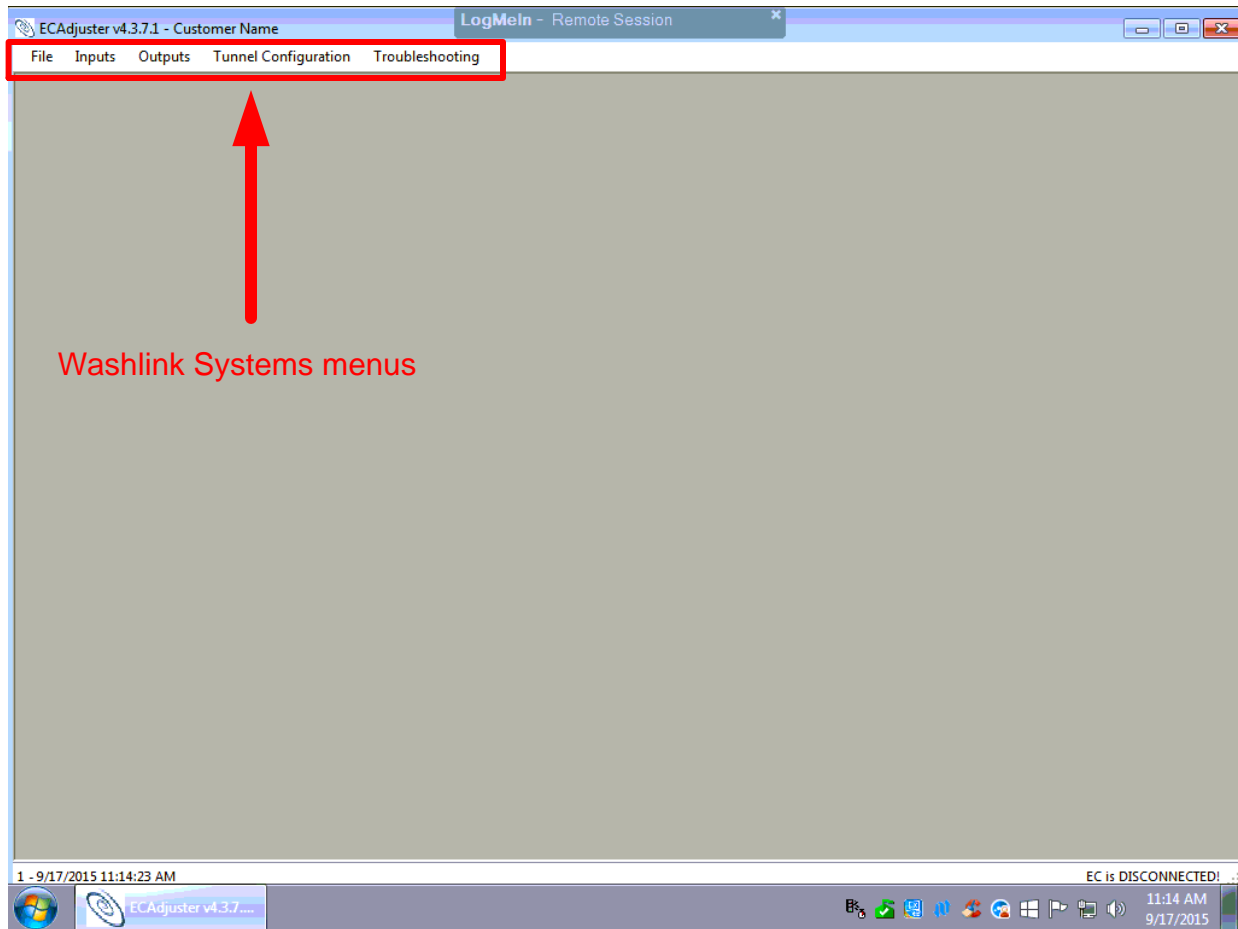


! You can create your personal username and password or use your fingerprint as a method of authentication but for demonstration purposes well use the default settings.

Check Tech Guild “Creating Username and Password” for further reference.

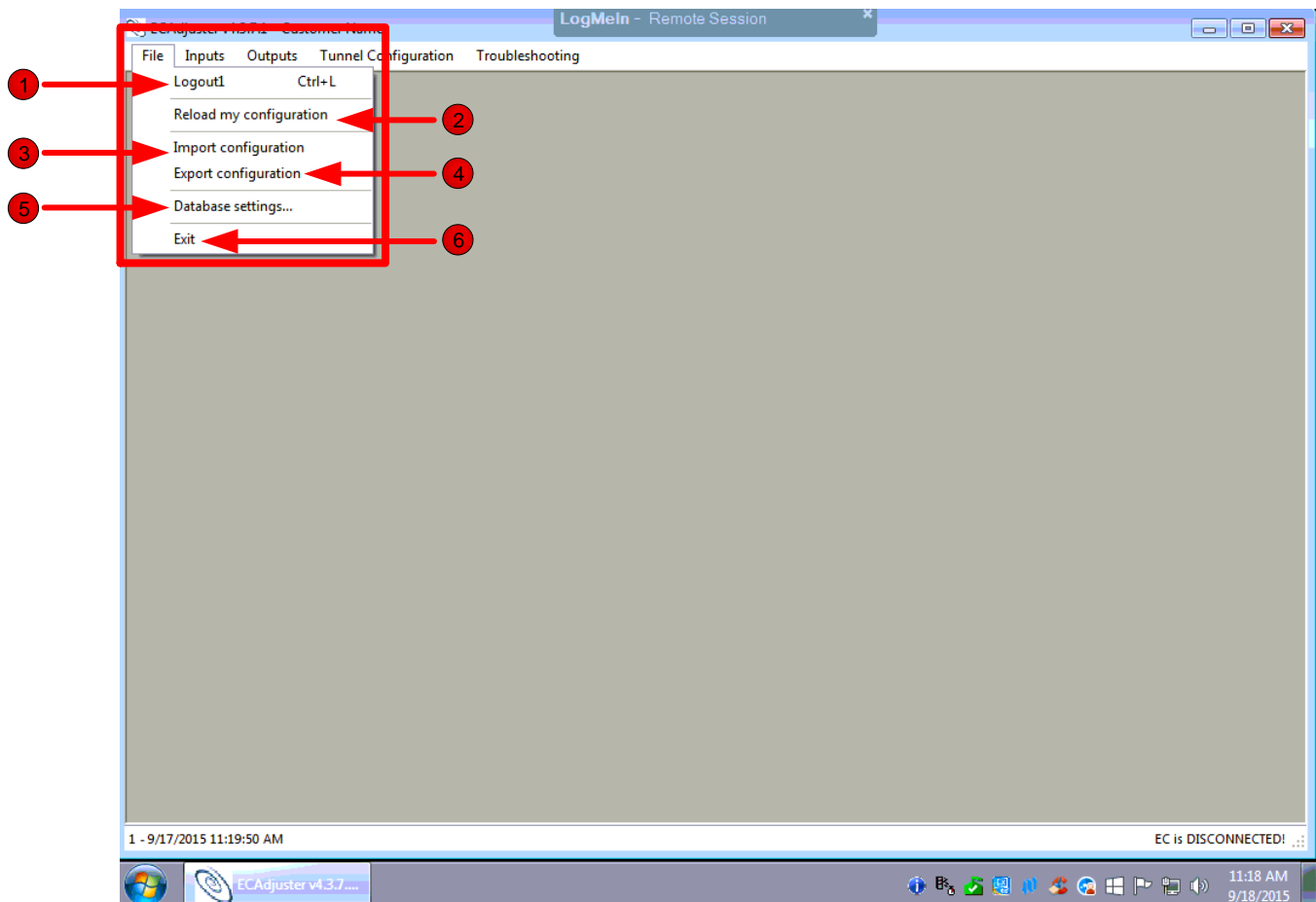
8 ECAadjuster Homepage

- All Washlink System Suite of programs uses a similar homepage.
- If you have been a Microsoft Windows® user, the menus will be very familiar to you.
- If you haven't used Windows you'll find it very easy by following the step-by-step tech guide.



9 File Menu

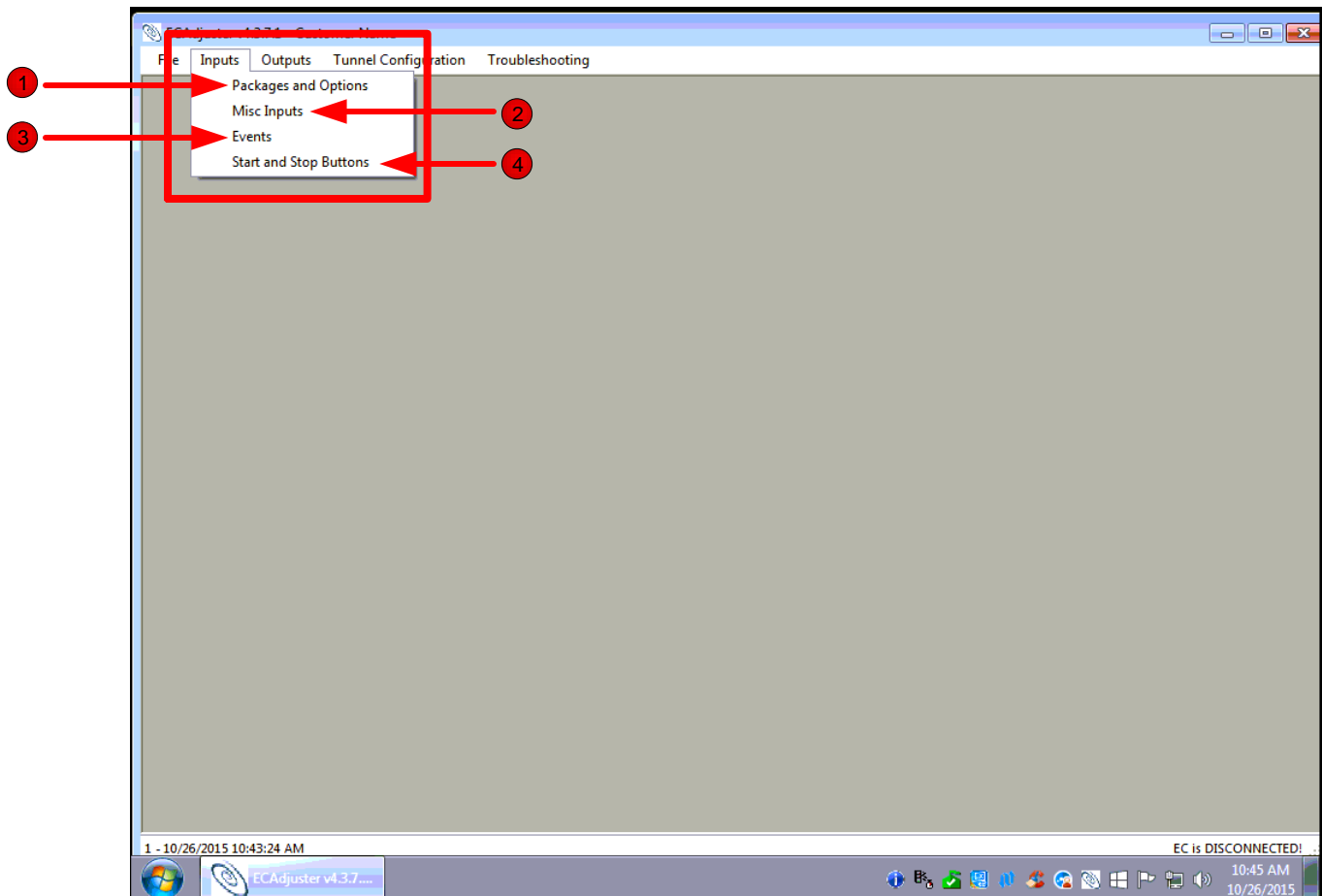
- Click on the “File” tab on the menu bar
- A list of functions is found in the file drop down



- 1 **Logout** - when you click here the particular user logged in will be logged out. It will not close out the program. The username is indicated next to the logout title. Refer to tech guide “Creating Username and Passwords” for further information.
- 2 **Reload my configuration** - Simply restarts your last saved ECAdjuster configuration.
- 3 **Import configuration** - you can import a saved ECAdjuster configuration from a previous time.
- 4 **Export configuration** – you can save your ECAdjuster configuration for installation at a later time or to another location.
- 5 **Database settings** – If you need to change the network connections to the database that the ECAdjuster uses you would do it here. **Washlink Systems highly recommends not changing these setting without contacting Washlink Systems support first so not to effect car wash operations.**
- 6 **Exit** - closes out the ECAdjuster program.
 - i** Tech guides are available for additional information for all the menu options.

10 Inputs Menu

- Click on the “Inputs” tab on the menu bar
- A list of options are found in the file drop down



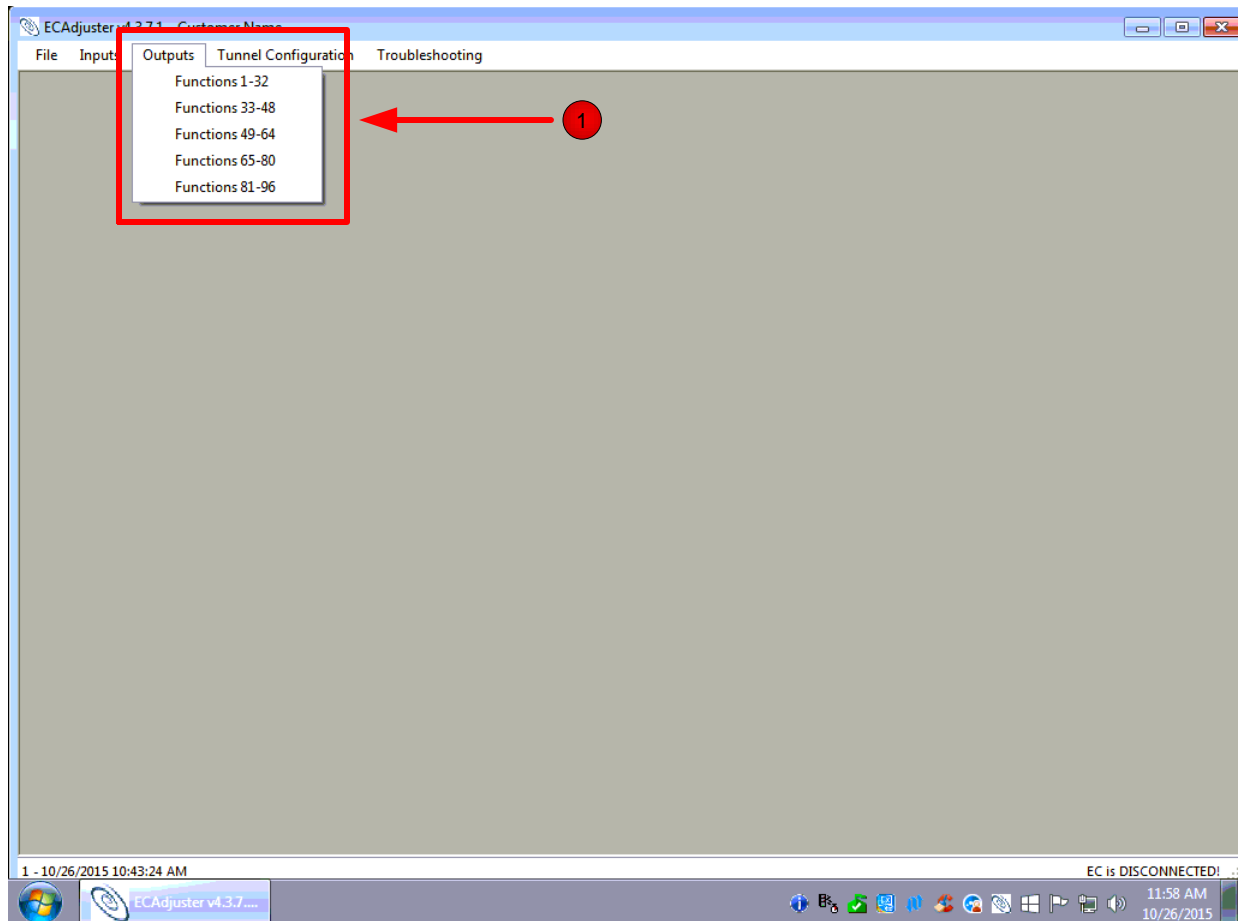
- 1 Packages and Options** – Allows you to make adjustments to the input numbers, the order number of the packages, name the configured packages and give a description of each of the packages.
- 2 Misc Inputs** – Allows you to made adjustments to additional input numbers, change the order number of the misc packages, give a name to the misc configured packages and give descriptions to each of the misc packages.
- 3 Events** - Allows you to adjust the input numbers of the events, the order number of the events, name of the events and the descriptions of each of the event.
- 4 Start and Stop Buttons** - Allows you to make adjustments on how the start and stop button functions. You can adjust the input number order, the order of the function, the name whether it's a stop or a stop button and the description of the function.

 Tech guides are available for additional information for all the menu options.

11 Outputs Menu

- Click on the “Outputs” tab on the menu bar
- A list of options are found in the file drop down

1 **Outputs** – Functions 1-96 correlate with the functions associated with the controller.



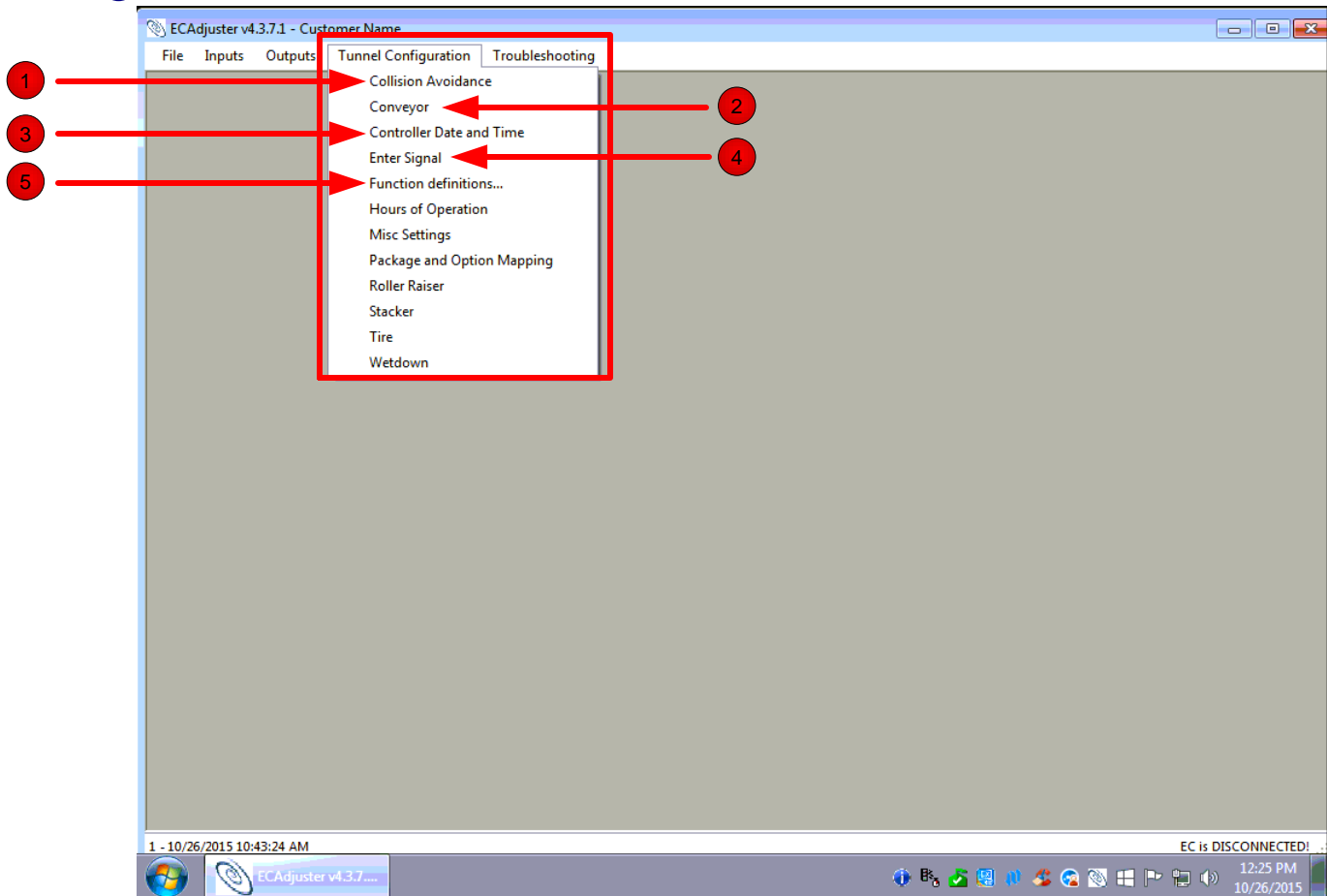
i Tech guides are available for additional information for all the menu options.

12 Tunnel Configuration Menu

- Click on the “Tunnel Configuration” tab on the menu bar
- A list of options are found in the file drop down.
- This portion of the “ECAdjuster” allows you to configure many portions of your tunnel equipment.



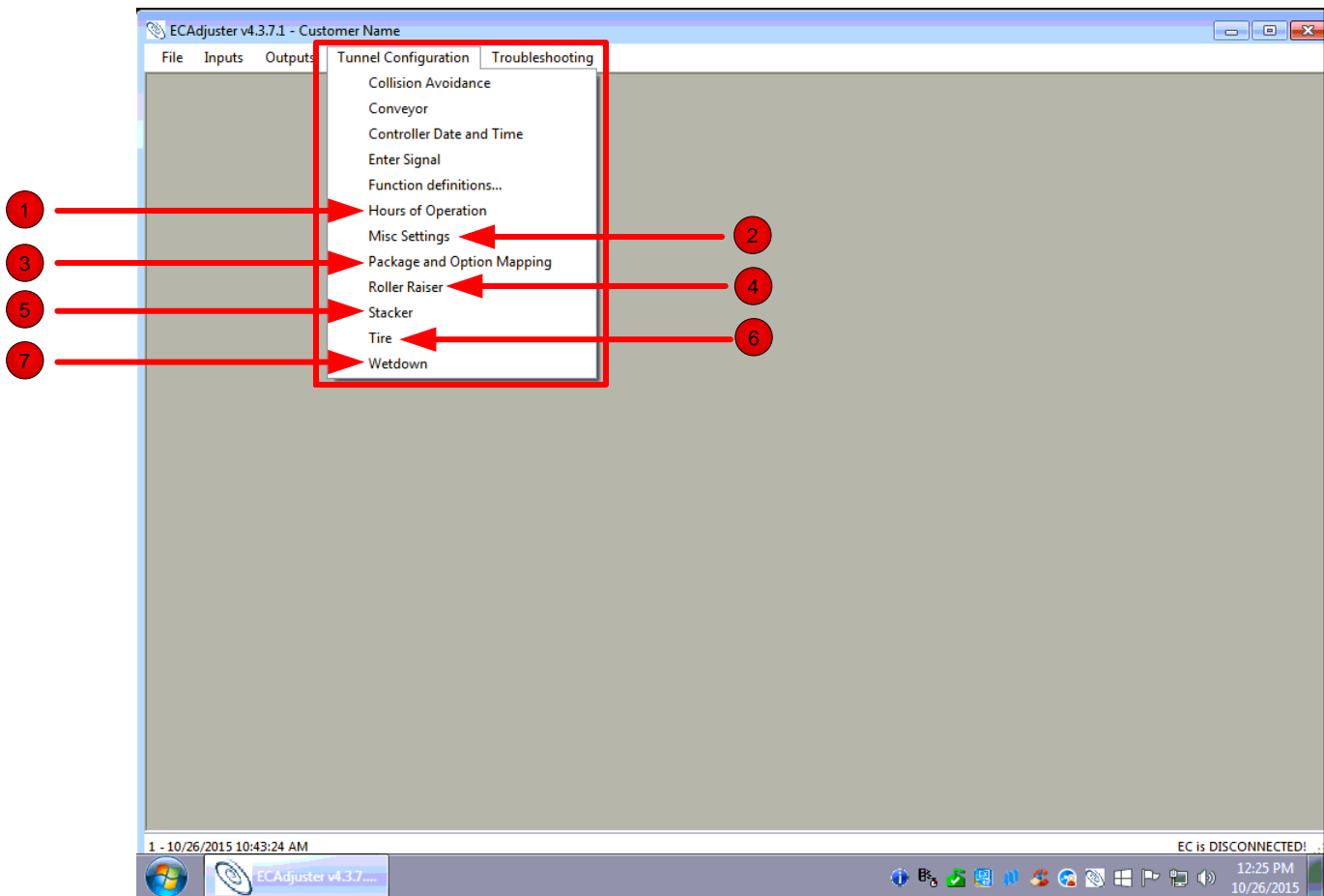
- **Make any adjustments in this section with extreme care.**
- Tech guides are available for additional information for all the menu options.



- 1 Collision Avoidance** - This will allow you to make adjustments to your the Anti-Collision system.
- 2 Conveyor** - The conveyor function allows you to make many adjustment on how your conveyor operates.
- 3 Controller Date and Time** - Make changes to the date and time associated to your controller.
- 4 Enter Signal** – Setting up photo eyes at the entrance of the car wash.
- 5 Function definition** – Setting up the tunnel equipment’s functions of inputs and outputs for each piece of car washing equipment.

12 Tunnel Configuration Menu continued

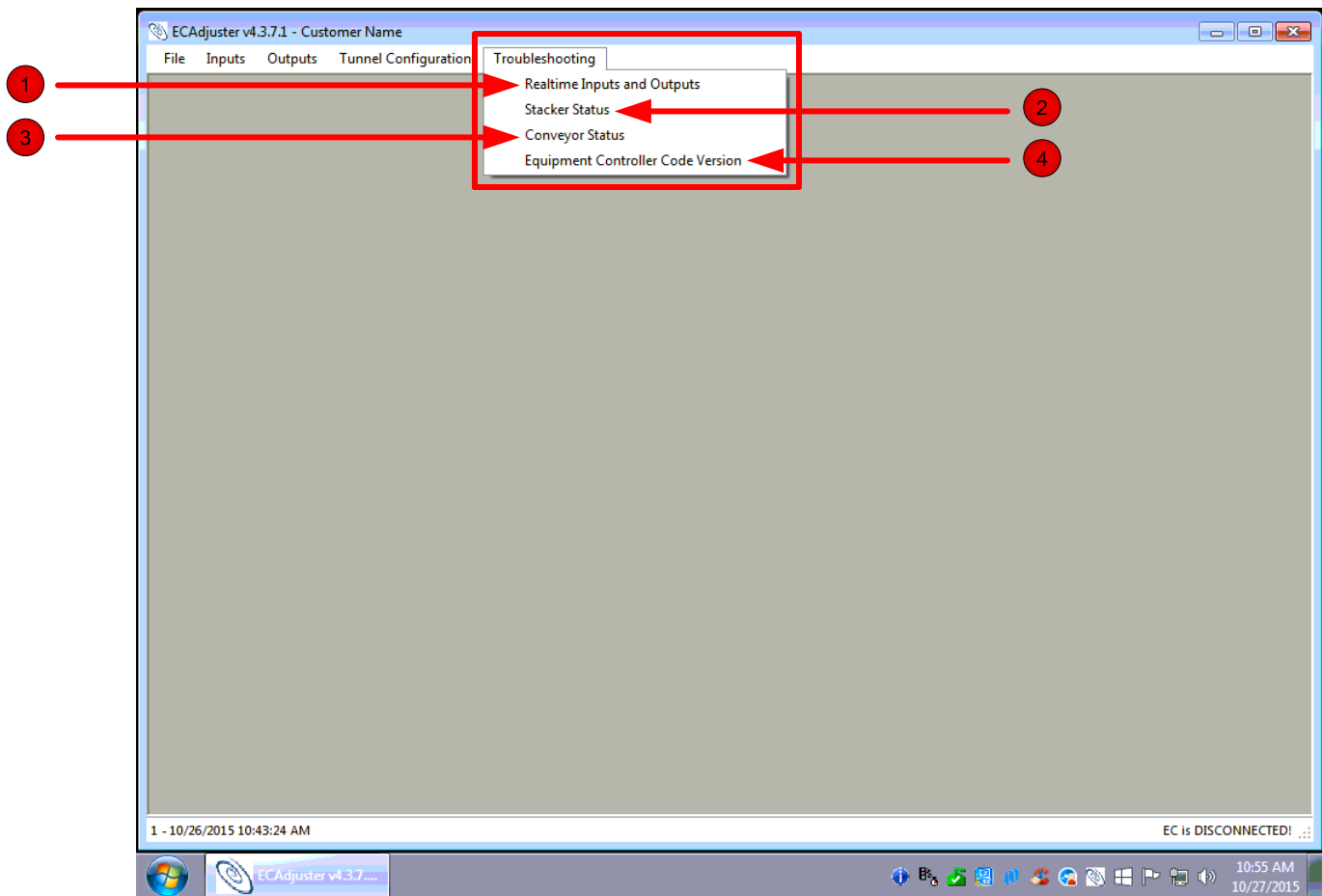
- 1 **Hours of Operations** - Set the days and hours that you are open for business.
- 2 **Misc. Settings** – Paystation functions including “Send car”, “Flash” and “Wash in use” configurations.
- 3 **Package and Option Mapping** – Individually assign packages to options.



- 4 **Roller Raiser** – Setup how the roller up function will operate.
- 5 **Stacker** – Enable and configure how the vehicle stacker will operate.
- 6 **Tire** – Setup the tire switch input functions to trigger certain car wash equipment operations.
- 7 **Wetdown** – When to allow the wetdown button to be active.

13 Troubleshooting menu

- Troubleshooting section offers a variety of information useful to running your car wash.
- Different car wash statuses are available for viewing in this section.
- i** • Tech guides are available for additional information for all the menu options.



- 1 Realtime Inputs and Outputs** – Visual representation of the car wash inputs to the PLC and the outputs from the PLC. Also you can view the pulse counter in this section.
- 2 Stacker Status** – Visually review the vehicles in the stack and the packages associated with each vehicle in the stack.
- 3 Conveyor Status** – Review the operation of the conveyor.
- 4 Equipment Controller Code Version** – Here you can check which version of the Washlink ECAjuster you have. **Check with the Washlink Systems support team if there is an ECAjuster update available to you.**

14 Appendix

Notes: