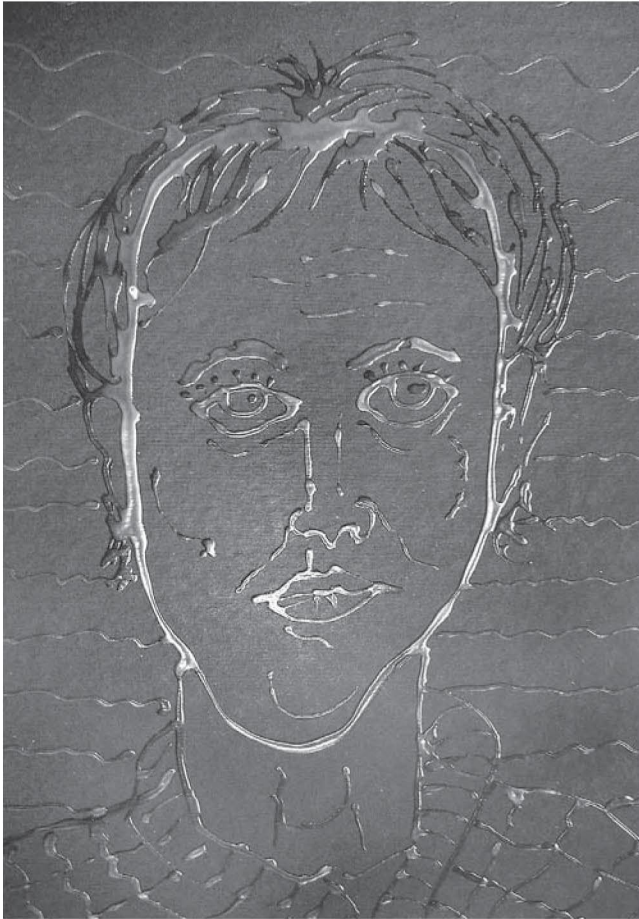


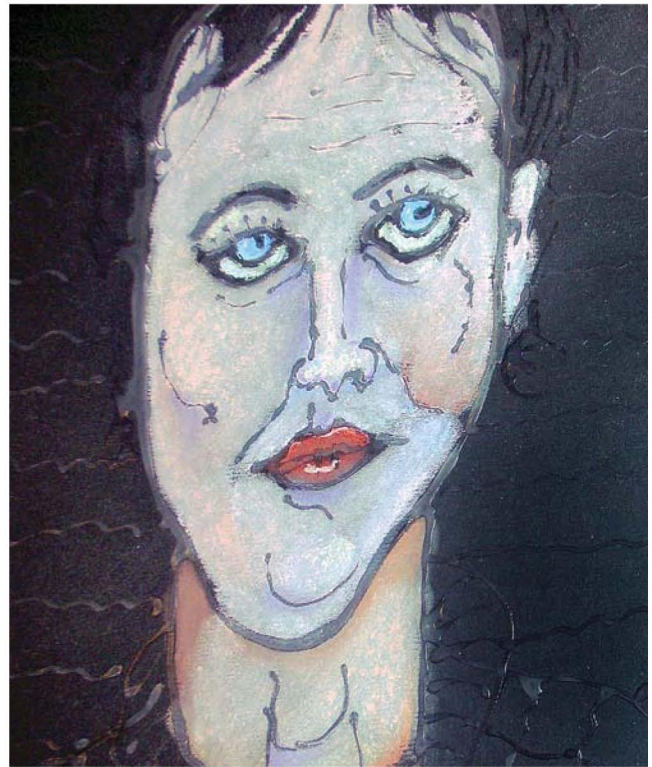
## FLOAT YOUR BOAT FARTHER

Flaunt your creative license with pastels and try these supplementary ventures.

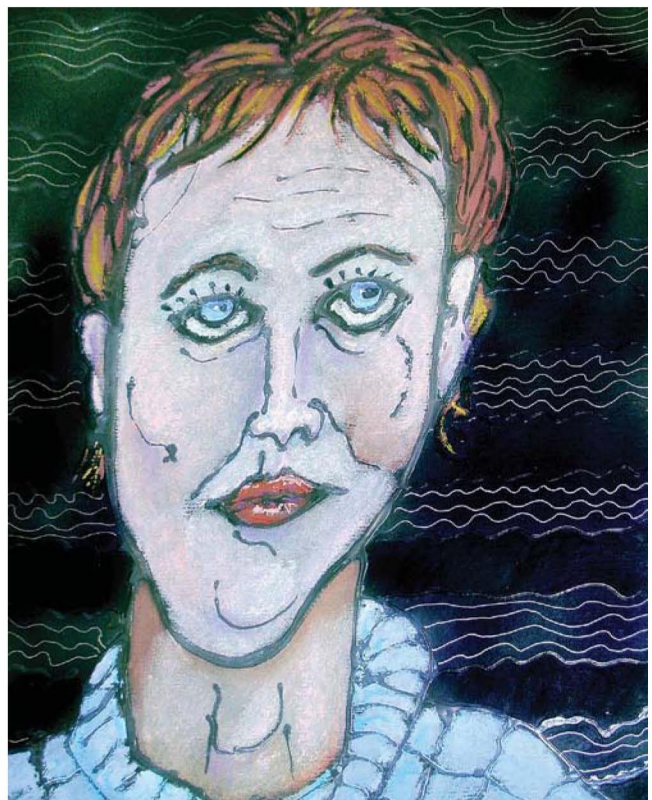
### Glue Factory



Squeeze bottles of craft glue make great drawing tools. Try a continuous-line design with glue—a figure in motion, a graceful animal, flowers, tree branches, or birds in flight, perhaps—and let it dry. This face was “drawn” on heavy black paper. A design in the background adds interest.



Add soft pastels.



The lines in the background were enhanced with a metallic gel pen.