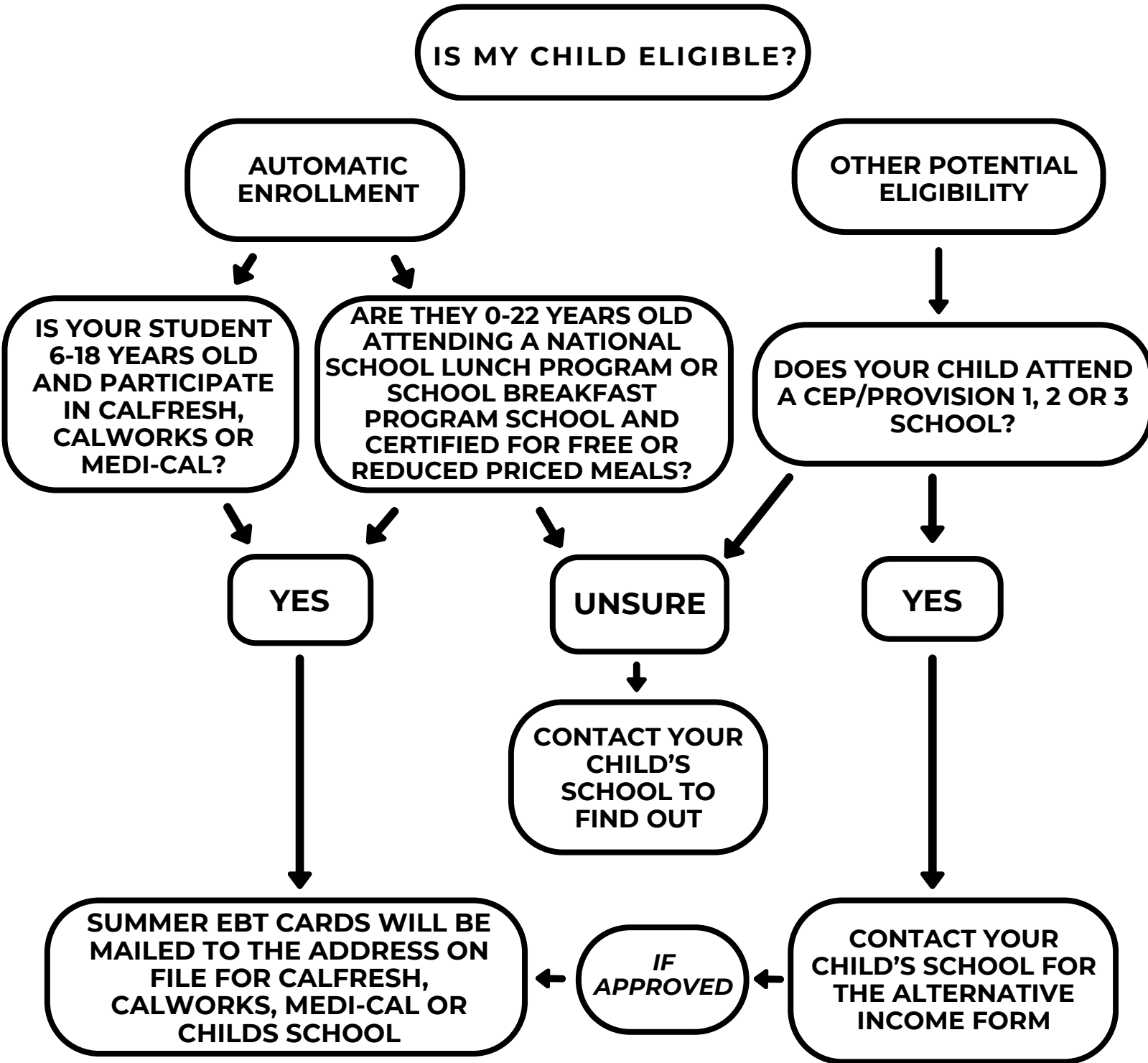




**SUMMER EBT WILL PROVIDE GROCERY-BUYING BENEFITS TO FAMILIES WITH LOW-INCOME WITH SCHOOL-AGED CHILDREN WHEN SCHOOLS ARE CLOSED FOR THE SUMMER. A **ONE-TIME \$120 DEPOSIT** WILL BE LOADED IN A **DEBIT LIKE-CARD** FOR **EACH ELIGIBLE CHILD** IN EVERY FAMILY.**

**SUN Bucks,  
SUMMER EBT**



**ELIGIBILITY IS NOT BASED ON IMMIGRATION STATUS**