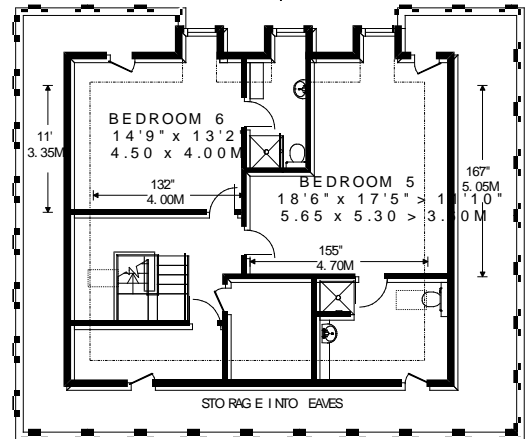


11 COOMBE RIDINGS KINGSTON-UPON-THAMES

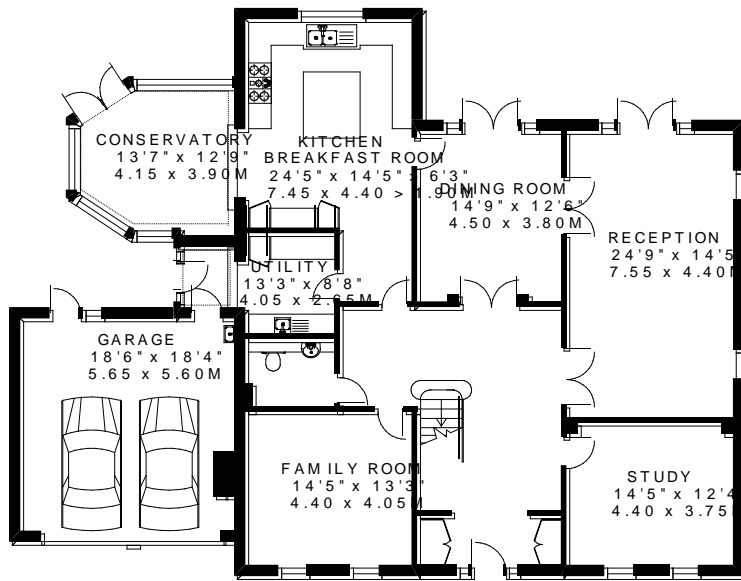
5000 SQ.FT. / 464.5 SQ.M.
PLUS EAVES STORAGE 490 SQ.FT. / 45.5 SQ.M.



GARDEN
100' x 112'10"
30.45 x 34.40M

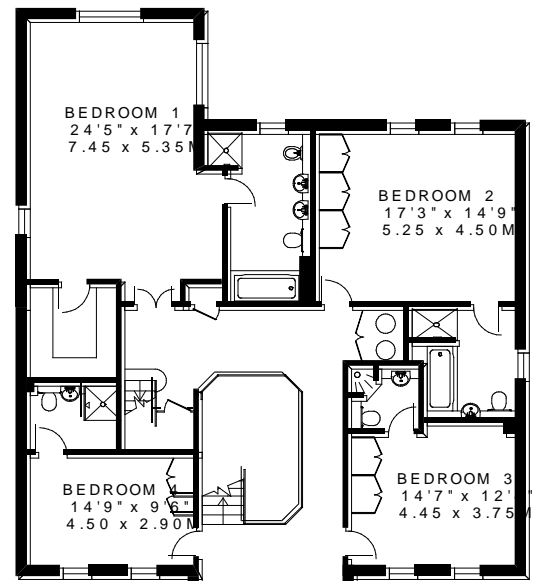
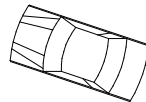


SECOND FLOOR 925 SQ.FT.



GROUND FLOOR 2295 SQ.FT.

PARKING
86'7" x 58'
26.40 x 17.65M



FIRST FLOOR 1780 SQ.FT.

VIEWING BY APPOINTMENT WITH COOMBE RESIDENTIAL
020 8947 9393

© FLOORPLAN PRODUCED FOR COOMBE RESIDENTIAL BY FLOORPLANNERS 0776 8877 919
 ALL MEASUREMENTS ARE MAXIMUM, AND INCLUDE WINDOW BAYS AND WARDROBES WHERE APPLICABLE
 THIS PLAN MUST NOT BE REPRODUCED BY ANY OTHER PERSON WITHOUT PERMISSION.