

ISSMA
INSTRUMENTAL
SOLO-ENSEMBLE
CONTEST
2018



NOBLESVILLE HIGH SCHOOL
NOBLESVILLE, INDIANA
January 27, 2018

**ISSMA SOLO AND ENSEMBLE CONTEST
(Brass, Woodwind, Percussion, and String)**

**Noblesville HS, Noblesville IN
January 27, 2018**

General Instructions

- Location:** Noblesville High School
18111 Cumberland Road
Noblesville IN 46060 (See map)
- Parking:** Use parking lots North and East of NHS.
- Percussion:** Percussion drop off equipment on West Drive. Enter from North off of Field Drive head South to park. Picking up equipment will follow the same flow.
- Storage area:** THERE ARE NO ASSIGNED STORAGE AREAS!

WE CANNOT BE RESPONSIBLE FOR LOST OR STOLEN ITEMS.

- Warm-Up Rooms:** No pianos in warm-up rooms.
PLEASE inform students and parents to keep food and drink out of these rooms and to take extra care in these rooms. Students **MUST** warm-up in their assigned rooms. **NO** warming up in the hall ways. **The rooms are monitored.**
- Admission:** Free admission. This is a public concert.
- Rating sheet:** These will be given to the directors of each school **after ALL** the tabulations are made. Please do not look at papers early and get in the way of our tabulators. This hinders the process and will result a longer wait to get your sheets.
- Medals:** Soon after a student's performance the judge's assistant will issue a punched medal card. Students will then take the card to Tables located in the cafeteria to receive their medal. This will allow students to wear their medal during the day. (This is the same format as State Solo & Ensemble except that the students will not be given the judges sheet. The judges' sheets will be tabulated and available to the directors only at the end of the day.)
- School Schedules:** **Please bring a copy of the schedule that you hand out to your students to our contest headquarters.** We often have lost grand- parents, parents, friends, and even students who don't know where they perform, especially if they are a member of an ensemble. If we had your handout we could easily help these people. Without your handout, it is next to impossible for us to help your people out.

- Time:** E.S.T.
- Percussion:** There will be four timpani (size 23", 26", 29" and 32"), a concert bass drum, xylophone, marimba and chimes on stage in the auditorium. If any other large percussion is needed please contact the NHS band department eric_thornbury@nobl.k12.in.us. Please remember that we have many percussion ensembles and extra equipment is not always available.
- State Contest:** Entries must be made the day of the contest in the contest headquarters (library). A representative of ISSMA will be present to take entries. **ENTRIES MUST BE PAID BY DIRECTOR'S CHECK, SCHOOL CHECK, OR PURCHASE ORDER.**
NO CASH PLEASE!
Only Group I - GOLD DIVISION winners are eligible.
Solos --\$15.00 / Ensembles --\$7.00 per member.
- Concessions:** The cafeteria will serve food and will be maintained by the Noblesville Band Boosters. Please do not take food or drinks out of the cafeteria. ***PLEASE SUPPORT OUR BAND!!***
NHS Orchestra will be selling coffee and pastries as well. Please support them.
- Director's Lounge:** Coffee and a place to visit and relax will be available for directors in the media center.
- Contest Host:** If you have any questions please contact Eric Thornbury, Director of Bands Noblesville: eric_thornbury@nobl.k12.in.us
- Music Apparel:** Music T-Shirts will be sold throughout the day.
Please, inform students and parents to bring extra \$\$\$\$\$.
- Contest updates:** Please sign up to our solo and ensemble remind for information including weather updates: Text [@nhsissma18](https://www.instagram.com/nhsissma18) to 81010

ATTENTION ALL DIRECTORS

I WOULD LIKE TO MAKE YOU AWARE OF SOME ITEMS FOR THIS YEAR'S CONTEST.

NO HOMEROOMS

WE DO NOT OFFER HOMEROOMS TO EACH INDIVIDUAL SCHOOL.
WE ARE NOT RESPONSIBLE FOR ANY LOST OR STOLEN ITEMS.

THERE IS TO BE NO PLAYING IN THE HALLS

QUIET IN THE HALLS

The Noise level in the hall can be a problem. Students waiting to perform or waiting for results and their friends and family are too loud and disturb performers in the rooms.

***PLEASE INSTRUCT YOUR PEOPLE TO BE VERY QUIET OR
NOT TO WAIT IN THE HALLS.***

If the noise level becomes a problem they will be asked to leave the hall.

FUNDRAISER

Although we host solo and ensemble as a service to the state we do intend to use it as a fundraising opportunity. Please encourage your students to bring money for concessions and Music T-Shirts.

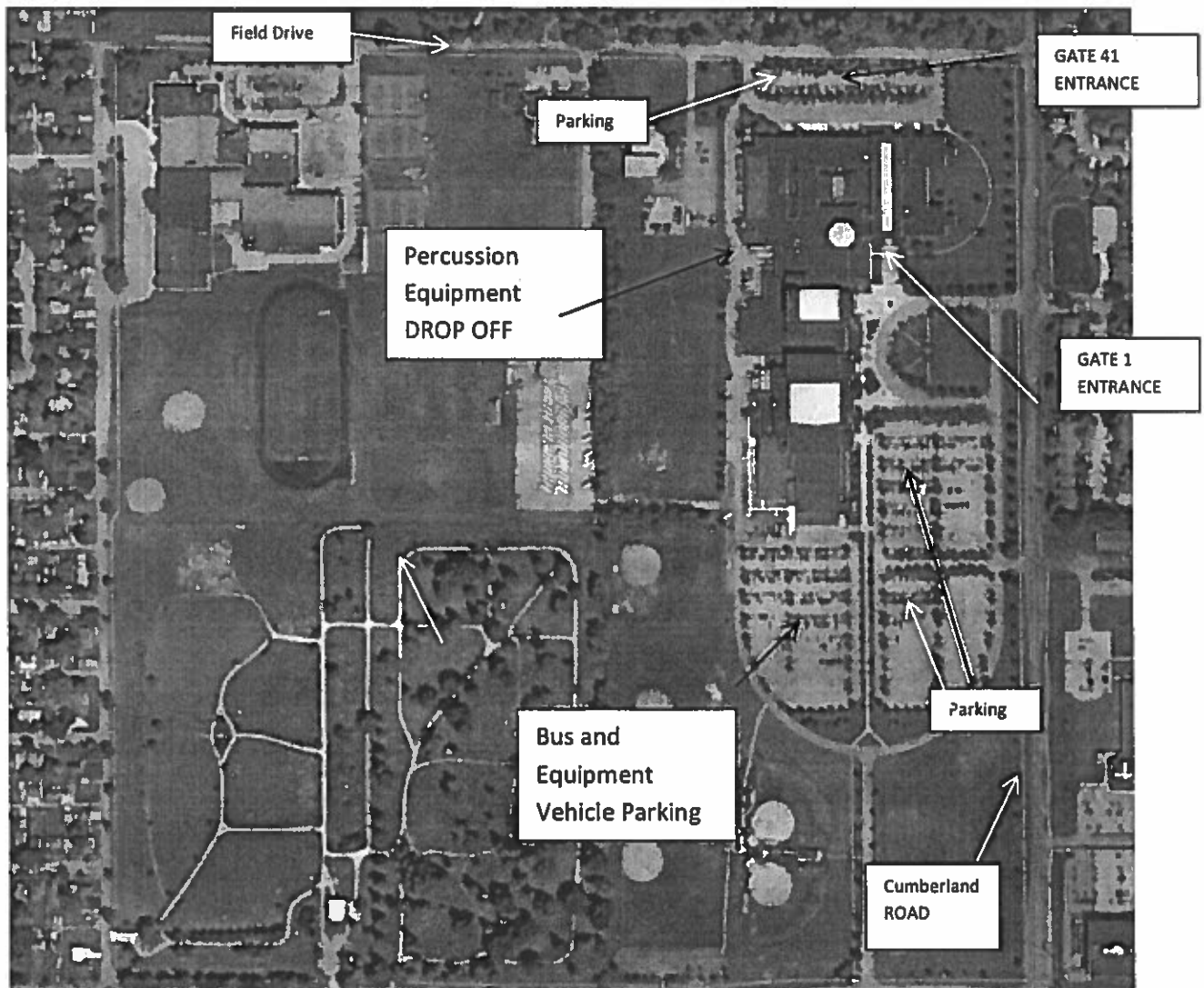
***THANKS FOR YOUR UNDERSTANDING. IF YOU HAVE ANY SUGGESTIONS TO MAKE
OUR CONTEST BETTER,
PLEASE CONTACT ME.***

THANKS,

Eric J. Thornbury
Director of Bands
Noblesville High School
Email: eric_thornbury@nobl.k12.in.us
Office phone: (317)-773-4680

EQUIPMENT TRAILERS

ENTER HERE ON NORTH SIDE



Directions:

From the North: I69 South to Exit 19 (SR 38). West on SR 38 to Noblesville. SR 38 will merge with SR 32 just east of SR 37.

From the South or West: 465 North to I-69. Exit 5 to 37 North. 37 North to SR32/ 38. West on SR 32/38. There is construction at the I69 exit to 37 North (exit 5). Be prepared for some delays.

Parking: Some parking available on North side of school band entrance is on this side Gate 41

More parking available on East and Southside of School Entrance Gate 1.

Percussion: *Drop off equipment on West side, come in off of field drive North of school and then proceed South to park your trailer. Pick up will follow the same traffic flow. Enter North Exit South.*

NOTICE TO DIRECTORS

You are responsible for the behavior of the students whom you enter at ISSMA Solo & Ensemble events. You are also responsible for making state entries at the District site the day of the event. Therefore, it is VERY important that you are in attendance at your solo & ensemble site. If, for some reason, it is not possible for you to attend, please arrange for another teacher or official from your school to be your representative and provide them with a letter stating you have asked them to accept this responsibility on your behalf. **Please note that state entries must be paid at the district site by a director's check, school check, or school purchase order. CASH IS NOT AN ACCEPTABLE FORM OF PAYMENT.**

Our site hosts are very valuable to the association. We will take steps to assure that host schools are protected from unsupervised students who create problems at the site. If you have any students whom you do not trust to behave in a responsible manner, please do not allow those students to participate. Take the time to instruct all your entrants on proper public behavior. A few people can ruin the day for everyone.

The directors of the member schools serve as the liaison between ISSMA and schools, students, parents, and staff members in regard to questions, comments or concerns for all ISSMA events.

All concerns about adjudication should be addressed by directors by completing the judge Adjudicator Evaluation sheet found in the ISSMA Music Festivals Manual on page 83. Direct contact with any adjudicator is considered inappropriate. Directors are not to contact any ISSMA judge regarding point scores, ratings, rankings, or recorded/written commentary.

Please note that discipline concerns at ISSMA events deemed to be of a serious enough nature, may result in a warning, a one (1) year suspension for the organization in question, or such other disciplinary or remedial measures as may be appropriate.

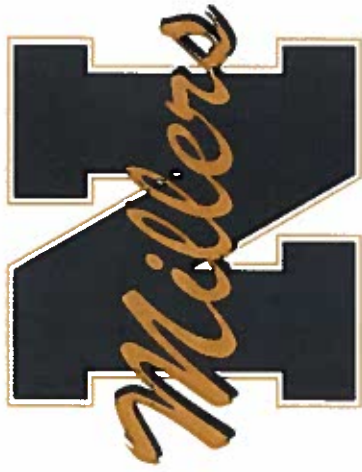
ACCOMPANIMENT

The ISSMA Manual P-18, G-6 states that solos & ensembles at all ISSMA events may be performed with or without piano accompaniment or with recorded piano accompaniment. Accompaniments, recorded or live, other than piano are not acceptable. For vocal ensembles (P-19, H-7), the piano, piano recording, or piano recording with recorded percussion accompaniment notated in the published score, is the only acceptable accompaniment. The "SmartMusic" accompaniment system is acceptable at ISSMA Solo & Ensemble. You must furnish your own equipment and use the keyboard mode.

STATE SOLO & ENSEMBLE SITES

ALL STATE SOLO & ENSEMBLE VOCAL EVENTS WILL BE HELD AT PERRY MERIDIAN HS
ALL STATE SOLO & ENSEMBLE PIANO EVENTS WILL BE HELD AT PERRY MERIDIAN MS
(Across the street from PERRY MERIDIAN HS)

ALL WIND & PERCUSSION EVENTS WILL BE HELD AT NORTH CENTRAL HS
ALL STRING EVENTS AT NORTHVIEW MS (Across the parking lot from NORTH CENTRAL HS).



Noblesville Band Booster

CONCESSIONS

Food

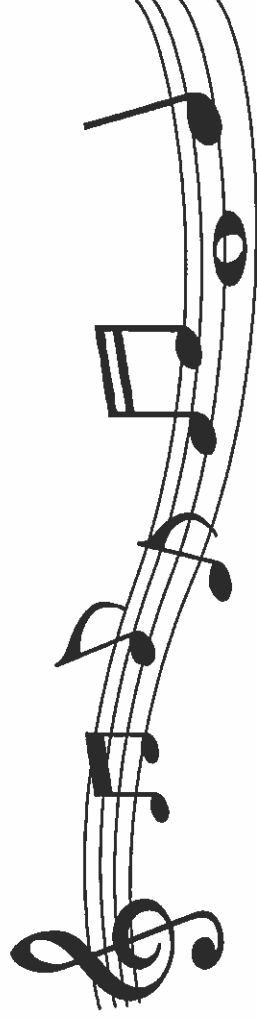
Donuts.....\$1.75 or
2/\$3
Hot Dogs.....\$2
Nachos.....\$2
Pizza.....\$2
Popcorn.....\$1
Chips.....\$1

Treats

Candy.....\$1
Rice Krispies
Treats.....\$1
Granola Bars....\$1
Cookies.....2/\$1

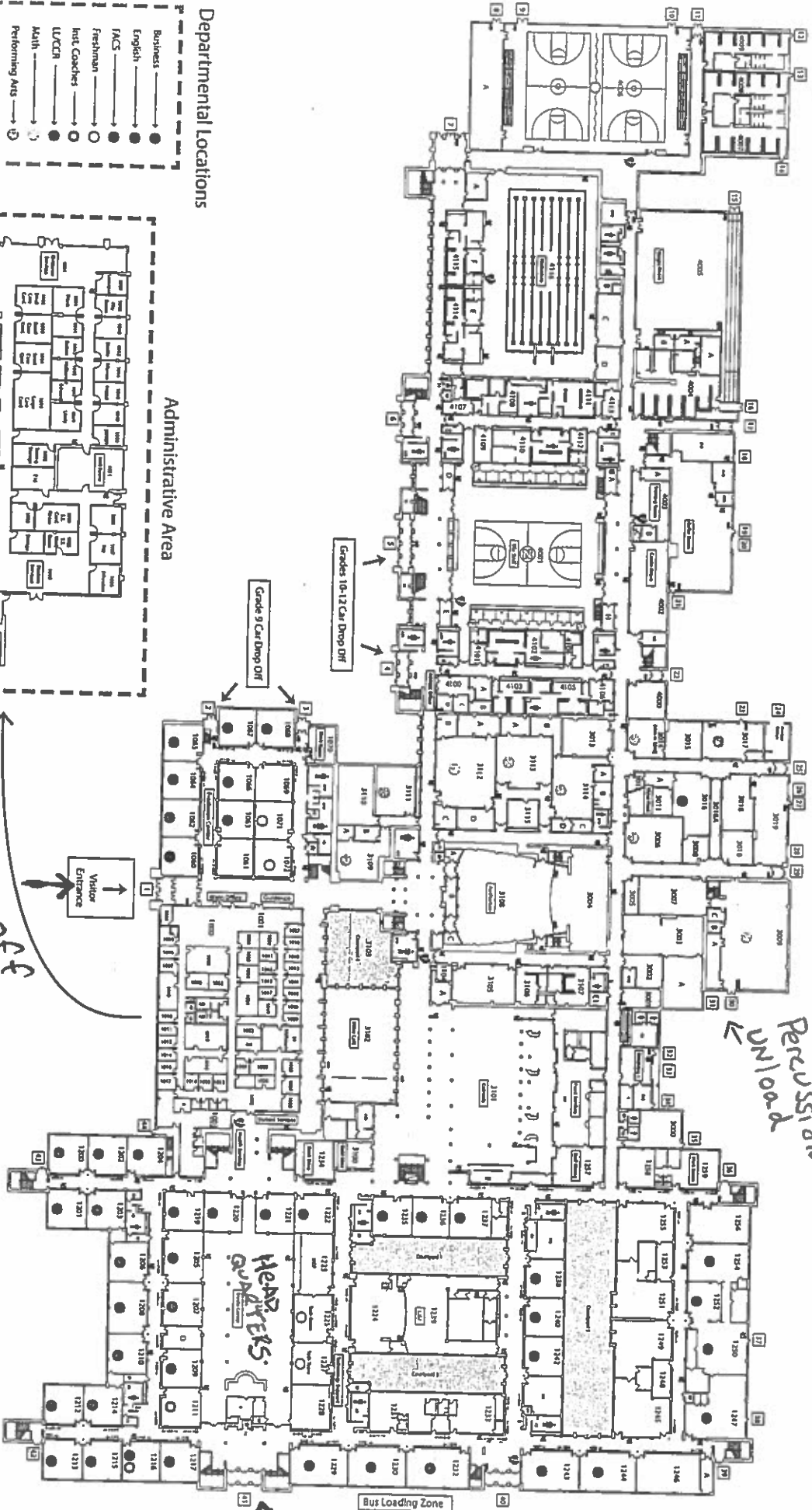
Drinks

Soda\$1
Water.....\$1





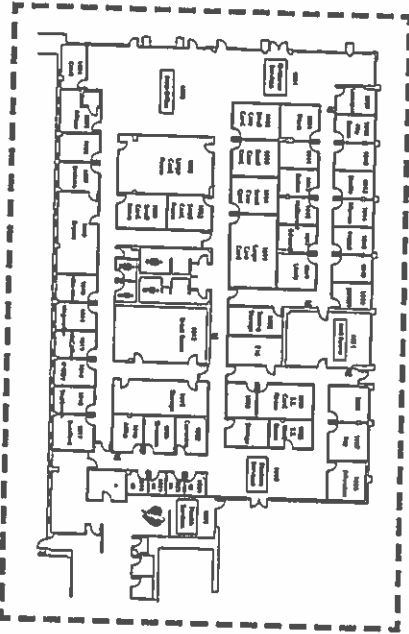
Percussion Vehicle Entrance
MUST EXIT



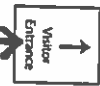
Departmental Locations

- Business —●—
- English —●—
- FACS —●—
- Freshman —○—
- Int. Coaches —○—
- LU/CA —○—
- Math —○—
- Performing Arts —○—
- Resource —○—
- Science —○—
- Social Studies —○—
- Tech. Support —○—
- Visual Art —○—
- Wellness —○—
- World Language —○—

Administrative Area



Drop off

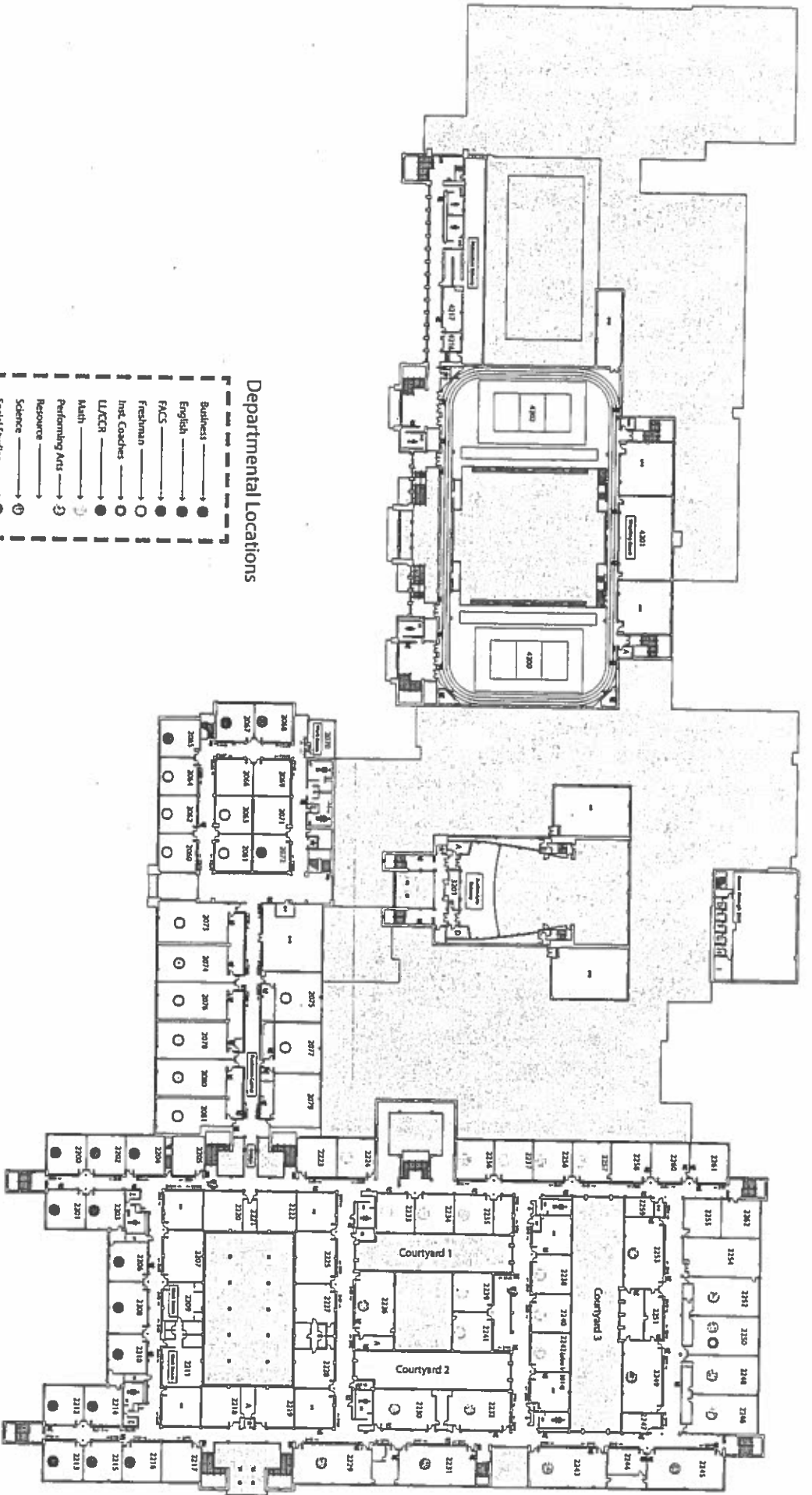


ENTER

First Floor



Noblesville High School
18111 Gumberland Rd. Noblesville, IN 46060
317-773-4680 • noblesville.k12schools.org
Engage. Inspire. Empower!



Departmental Locations

- Business → ●
- English → ●
- FACS → ●
- freshman → ○
- Inst. Coaches → ○
- U/CCR → ●
- Math → ●
- Performing Arts → ●
- Resource → ●
- Science → ●
- Social Studies → ●
- Tech. Support → ○
- Visual Art → ●
- Wellness → ●
- World Language → ●

Second Floor



Noblesville High School
 18111 Cumberland Rd. Noblesville, IN 46060
 317-773-4660 - noblesvilleschools.org
 Engage. Inspire. Empower

INDIANA STATE SCHOOL MUSIC ASSOCIATION, INC.

2017-18 EXECUTIVE COMMITTEE/DIRECTORS

President: Timothy Johnston, Scottsburg High School

Vice President: Bonnie Harmon, Salem High School

Past President: Jeffrey T. Parthun, Lafayette Tecumseh Jr. High School

ISSMA Executive Director: Michael K. (Mick) Bridgewater

Instrumental Education Director: Mark A. Middleton

Choral Education Director: Scott A. Bradford

“A Statement from the ISSMA Office”

Directors are responsible for the behavior of their students at any and all ISSMA performance sites. Instruction regarding proper conduct and expectations at such events should be a part of the overall educational and preparation process. It is crucial that host schools, their administrators and teachers can confidently host our events in their facilities without fear of damage or inappropriate behavior. We have had a few instances of schools electing not to host events again because of disrespect for the facilities and host officials by some students.

Thank you in advance for your cooperation.

.....
: The directors of the member schools will serve as the :
: liaison between ISSMA and schools, students, :
: parents, and staff members in regard to questions, :
: comments or concerns for all ISSMA events. Direct :
: contact with any adjudicator is considered :
: inappropriate. :
.....