

COVID-19 IN KENYA

LOCKDOWN = HUNGER



88 DEATHS

873 RECOVERED

3K CASES

SCHOOLS CLOSED IN KENYA

15 MARCH 2020

LOCKDOWN ISSUED

25 MARCH 2020

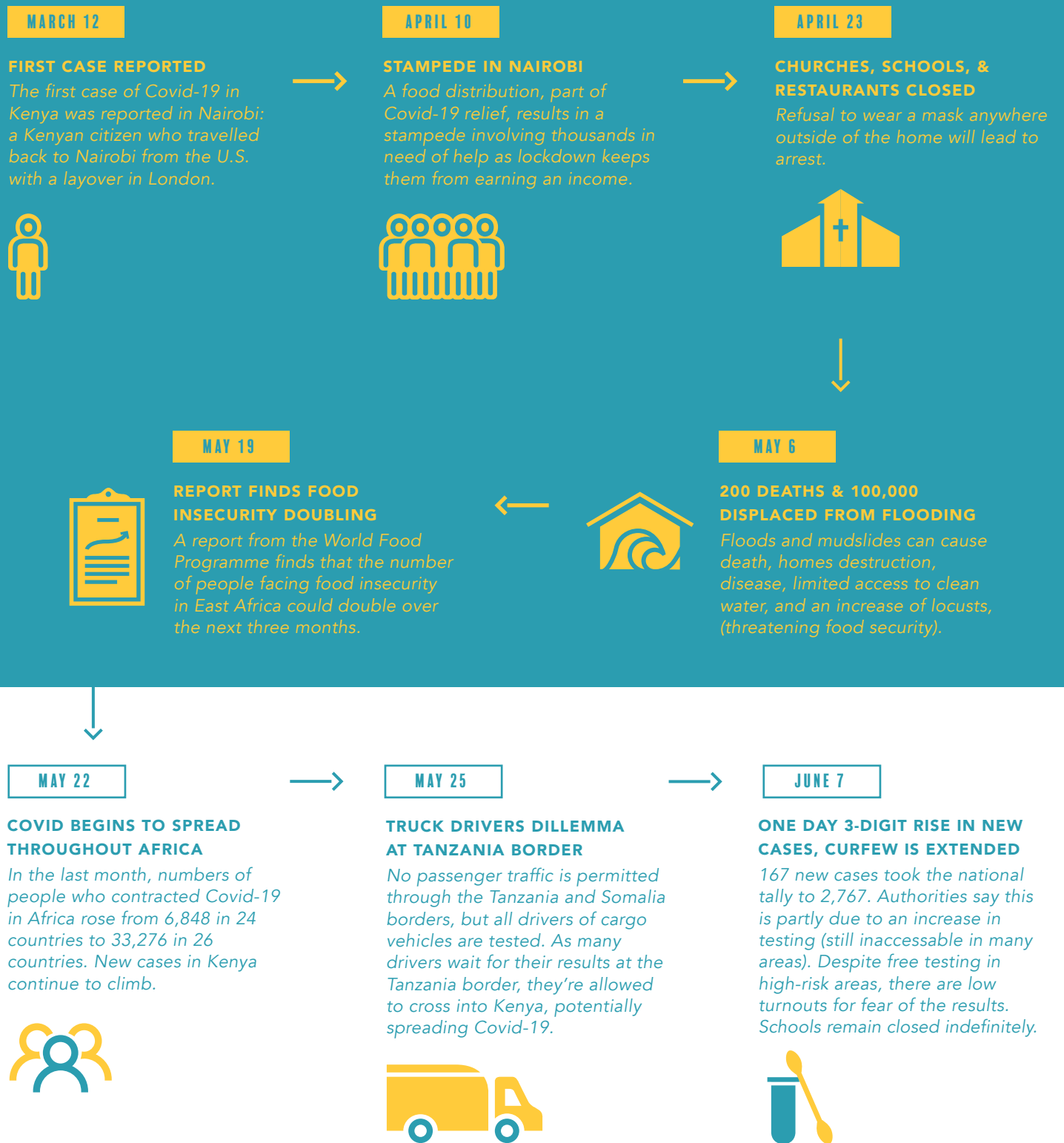
CURFEW EXTENDED FOR 30 DAYS

6 JUNE 2020

CASE INCREASE (MARCH 30 - MAY 30)

50 TO 2K

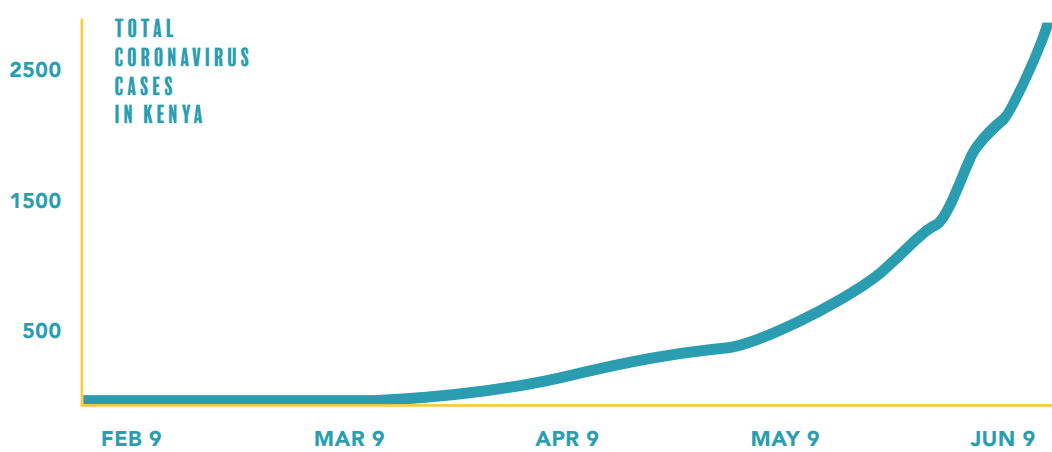
However, only 44,851 tests were done by May 18. To make up 1% of the population, 537,713 tests would be needed.



Continued education has been ensured for 15 million children in Kenya through distance learning platforms (UNICEF). However, not all children will be reached, especially those without internet access or adult supervision. School closure also removes school lunches, which has significant nutritional consequences for the poorest children.

Multiple locations have reported a spike in **gender-based violence** during the outbreak, as communities face rising economic pressure. A 35.8% increase in sexual offences has been reported since the virus reached Kenya.

Menstruation is worse for young women because of product shortages and intentional inflation of prices of pads and tampons. Many are going without period products.



HOW TO HELP



PRAY FOR KENYA

- For protection for those on the front lines: those delivering food/basic needs, medical professionals, caregivers
- For families and children who are going hungry because of lockdown
- For safety from domestic violence for families who are living in such close proximity
- For jobs to be accessible non-profits and NGOs to avoid creating dependency at this time
- For the coronavirus to stop spreading and for those infected with COVID-19
- For those who are at a higher risk of developing the disease
- For Kenyan leaders and government officials responsible for making decisions

DONATE

At Neema, we are continuing to provide food and essential resources to our students and their families during this period of curfew, a time that still keeps those depending on casual labor from finding work.

