

# NONMENCLATURE PART LIST

## MOSFETS

### Nomenclature Part List

Series 2N, JAN2N, JANTX2N, JANTXV2N, MU, SD, VN, VP, V

Small Signal Discrete						
QPL Designation (if applicable)	VP	1006	P	-2	-E3	
Device Family						
Device Number						
Package (if applicable)						
Process Option (if applicable)						
Plating Option						
<b>Device Family</b>			<b>Package</b>			
CR - N-Channel Current Regulator			P ----- Hermetic Dual-In-Line Sidebrazed Package			
DPAD - Dual JFET Low Leakage Diode			<b>Process Option</b>			
J - TO-226AA (TO-92) Cased JFET			-2 ----- JANTXV Equivalent Flow, Group A QCI only			
JPAD - TO-226AA (TO-92) Cased JFET Low Leakage Diode			<b>Plating Option</b>			
PAD - Metal Can Cased JFET Low Leakage Diode			-E1 ----- Tin/Lead (Sn/Pb) Termination			
PN - TO-226AA (TO-92) Cased JFET			-E3 ----- 100% Tin (Sn) Termination. RoHS Compliant			
SST - Surface Mount Device			-G3 ----- Gold (Au) Termination. RoHS Compliant			
U - Metal Can Cased JFET			<b>QPL Designation</b>			
V - Low Power MOSFET (Special)			JAN - Lowest Quality Level per Mil-Prf-19500			
VCR - N-Channel Voltage Controlled Resistor			JANTX - Mid Non-Space Quality Level per Mil-Prf-19500			
VN - N-Channel Low Power MOSFET			JANTXV - Highest Non-Space Quality Level per Mil-Prf-19500			
VP - P-Channel Low Power MOSFET			JANS - Space Quality Level per Mil-Prf-19500			
VQ - Quad (4 devices/package) Low Power MOSFET						
2N - JEDEC Registered Device						
3N - JEDEC Registered Device						

# JFETS

## JFETS Nomenclature Part List Series 2N, JAN, JANTX, JANTXV, PN, SST, U

Small Signal Discrete	
	VP    1006    P    -2    -E3
QPL Designation (if applicable)	
Device Family	
Device Number	
Package (if applicable)	
Process Option (if applicable)	
Plating Option	
<b>Device Family</b>	<b>Package</b>
CR - N-Channel Current Regulator	P ----- Hermetic Dual-In-Line Sidebrazed Package
DPAD - Dual JFET Low Leakage Diode	<b>Process Option</b>
J - TO-226AA (TO-92) Cased JFET	-2 ----- JANTXV Equivalent Flow, Group A QCI only
JPAD - TO-226AA (TO-92) Cased JFET Low Leakage Diode	<b>Plating Option</b>
PAD - Metal Can Cased JFET Low Leakage Diode	-E1 ----- Tin/Lead (Sn/Pb) Termination
PN - TO-226AA (TO-92) Cased JFET	-E3 ----- 100% Tin (Sn) Termination, RoHS Compliant
SST - Surface Mount Device	-G3 ----- Gold (Au) Termination, RoHS Compliant
U - Metal Can Cased JFET	<b>QPL Designation</b>
V - Low Power MOSFET (Special)	JAN - Lowest Quality Level per Mil-Prf-19500
VCR - N-Channel Voltage Controlled Resistor	JANTX - Mid Non-Space Quality Level per Mil-Prf-19500
VN - N-Channel Low Power MOSFET	JANTXV - Highest Non-Space Quality Level per Mil-Prf-19500
VP - P-Channel Low Power MOSFET	JANS - Space Quality Level per Mil-Prf-19500
VQ - Quad (4 devices/package) Low Power MOSFET	
2N - JEDEC Registered Device	
3N - JEDEC Registered Device	

# LOW LEAKAGE DIODES

## Low Leakage Diodes Nomenclature Part List Series DPA, JPA, PAD, SSTP, SSTPAD

Small Signal Discrete	
QPL Designation (if applicable)	VP 1006 P -2 -E3
Device Family	
Device Number	
Package (if applicable)	
Process Option (if applicable)	
Plating Option	
<b>Device Family</b>	<b>Package</b>
CR - N-Channel Current Regulator	P ----- Hermetic Dual-In-Line Sidebrazed Package
DPAD - Dual JFET Low Leakage Diode	<b>Process Option</b>
J - TO-226AA (TO-92) Cased JFET	-2 ----- JANTXV Equivalent Flow, Group A QCI only
JPAD - TO-226AA (TO-92) Cased JFET Low Leakage Diode	<b>Plating Option</b>
PAD - Metal Can Cased JFET Low Leakage Diode	-E1 ----- Tin/Lead (Sn/Pb) Termination
PN - TO-226AA (TO-92) Cased JFET	-E3 ----- 100% Tin (Sn) Termination. RoHS Compliant
SST - Surface Mount Device	-G3 ----- Gold (Au) Termination. RoHS Compliant
U - Metal Can Cased JFET	<b>QPL Designation</b>
V - Low Power MOSFET (Special)	JAN - Lowest Quality Level per Mil-Prf-19500
VCR - N-Channel Voltage Controlled Resistor	JANTX - Mid Non-Space Quality Level per Mil-Prf-19500
VN - N-Channel Low Power MOSFET	JANTXV - Highest Non-Space Quality Level per Mil-Prf-19500
VP - P-Channel Low Power MOSFET	JANS - Space Quality Level per Mil-Prf-19500
VQ - Quad (4 devices/package) Low Power MOSFET	
2N - JEDEC Registered Device	
3N - JEDEC Registered Device	

## ANALOG SWITCHES & MULTIPLEXERS

### Integrated Circuits

#### Analog Switches Nomenclature Part List

Series 5962, 7705, 7801, 8100, 8671, 8767, 8768, 8976, 8996, 9056, 9060, 9068, 9073, 9076, 9089, 9155, 9204, 9325, 9562, 9569, D, DG, M38510, SJM

Integrated Circuits							
	DG	180	B	A	P	/883	
Device Family							
Device Number							
Device Revision (as applicable)							
Operating Temperature Range							
Package							
Option							
<b>Device Family</b> (1 or 2 Letters)	<b>DG - Analog Switch and Analog Multiplexer</b>						
<b>Device Number</b> (3 or 4 Digit Numbers)							
<b>Operating Temperature Range</b> (1 Letter)	<b>A</b> --- -55 to +125°C <b>B</b> --- -25 to +85°C <b>C</b> --- 0 to +70°C <b>D</b> --- -40 to +85°C <b>E</b> --- -40 to +105°C						
<b>Package</b>	<b>A</b> ----- Metal Can <b>J</b> ----- Dual-In-Line Package ---- Plastic <b>K</b> ----- Dual-In-Line Package ---- Ceramic DIP <b>L</b> ----- Flat Pack <b>M</b> ----- CerQuad J-leaded Chip Carrier <b>N</b> ----- Plastic J-leaded Chip Carrier <b>P</b> ----- Dual-In-Line Package ---- Sidebrazed <b>Q</b> ----- TSSOP <b>R</b> ----- Dual-In-Line Package ---- Sidebrazed <b>W</b> ----- Wide Body SOIC <b>Y</b> ----- Narrow Body SOIC <b>Z</b> ----- LCC						
<b>Option</b>	<b>/883</b> --- Processed to the current revision of Mil-STD-883, Level . Compliant Non-JAN <b>-4</b> ----- Ruggedized plastic flow <b>-T1</b> ----- Tape-and-Reel						

## ▲ ANALOG SWITCHES & MULTIPLEXERS

### MIL-M-38510

#### Analog Switches Nomenclature Part List

Series 5962, 7705, 7801, 8100, 8671, 8767, 8768, 8976, 8996, 9056, 9060, 9068, 9073, 9076, 9089, 9155, 9204, 9325, 9562, 9569, D, DG, M38510, SJM

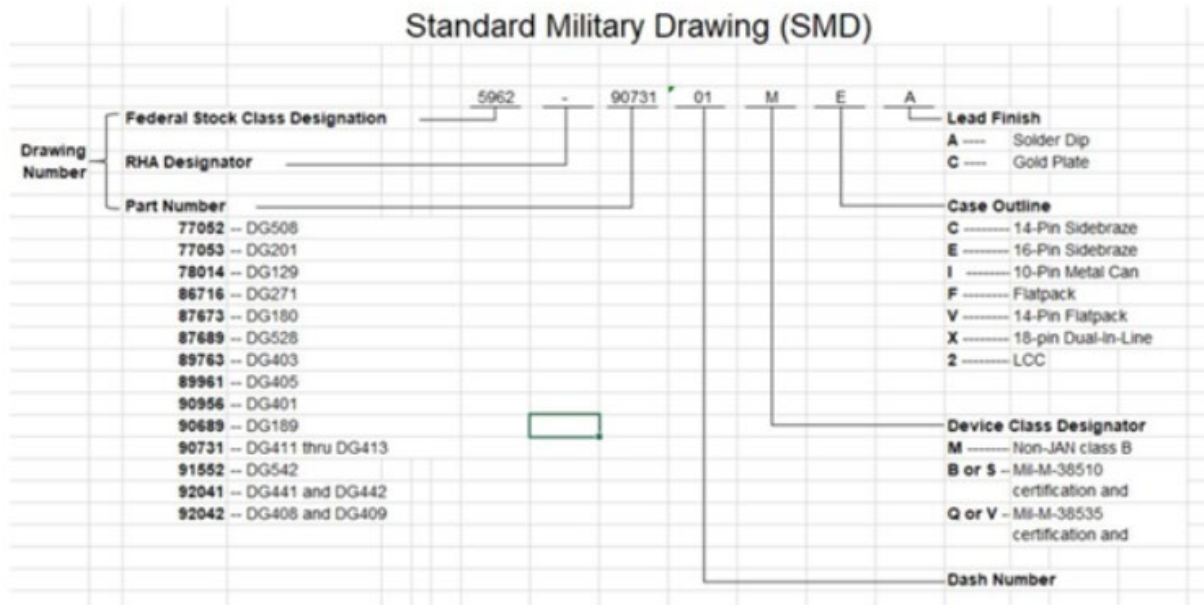
MIL-M-38510								
"JAN" Certification Mark	J	M38510	/111	07	B	E	C	Lead Finish
Military Designator								A --- Solder Dip C --- Gold Plate
Detail Specification (Slash Sheet)								Case Outline
			/111 -- DG181 Series					C --- 14-Pin Sidebraze
			/116 -- DG300A Series					E --- 16-Pin Sidebraze
			/123 -- DG200A Series					I --- 10-Pin Metal Can
			/190 -- DG506A Series					X --- 14-Pin Flatpack or 28-pin Sidebraze
Device Type								Device Class
	/111	01 - DG181	05 - DG187					
		02 - DG182	06 - DG188					
		03 - DG184	07 - DG190					
		04 - DG185	08 - DG191					
	/116	01 - DG300A	05 - DG304A					
		02 - DG301A	06 - DG305A					
		03 - DG302A	07 - DG306A					
		04 - DG303A	08 - DG307A					
	/123	01 - DG200A	02 - DG201A					
	/190	01 - DG506A	07 - DG508A					
		03 - DG507A	08 - DG509A					

# ANALOG SWITCHES & MULTIPLEXERS

## Standard Military Drawing (SMD)

### Analog Switches Nomenclature Part List

Series 5962, 7705, 7801, 8100, 8671, 8767, 8768, 8976, 8996, 9056, 9060, 9068, 9073, 9076, 9089, 9155, 9204, 9325, 9562, 9569, D, DG, M38510, SJM



# CURRENT REGULATORS

## Current Regulators Nomenclature Part List Series CR, J, SCL, SST

Small Signal Discrete	
QPL Designation (if applicable)	VP 1006 P -2 -E3
Device Family	
Device Number	
Package (if applicable)	
Process Option (if applicable)	
Plating Option	
<b>Device Family</b>	<b>Package</b>
CR - N-Channel Current Regulator	P ----- Hermetic Dual-In-Line Sidebrazed Package
DPAD - Dual JFET Low Leakage Diode	<b>Process Option</b>
J - TO-226AA (TO-92) Cased JFET	-2 ----- JANTXV Equivalent Flow, Group A QCI only
JPAD - TO-226AA (TO-92) Cased JFET Low Leakage Diode	<b>Plating Option</b>
PAD - Metal Can Cased JFET Low Leakage Diode	-E1 ----- Tin/Lead (Sn/Pb) Termination
PN - TO-226AA (TO-92) Cased JFET	-E3 ----- 100% Tin (Sn) Termination. RoHS Compliant
SST - Surface Mount Device	-G3 ----- Gold (Au) Termination. RoHS Compliant
U - Metal Can Cased JFET	<b>QPL Designation</b>
V - Low Power MOSFET (Special)	JAN - Lowest Quality Level per Mil-Prf-19500
VCR - N-Channel Voltage Controlled Resistor	JANTX - Mid Non-Space Quality Level per Mil-Prf-19500
VN - N-Channel Low Power MOSFET	JANTXV - Highest Non-Space Quality Level per Mil-Prf-19500
VP - P-Channel Low Power MOSFET	JANS - Space Quality Level per Mil-Prf-19500
VQ - Quad (4 devices/package) Low Power MOSFET	
2N - JEDEC Registered Device	
3N - JEDEC Registered Device	

## CUSTOMER SPECIFIC

Customer Specific Nomenclature Part List  
 Series DM, DN, FN, J, MU, MV, P, PF, PMA,  
 SC, SD, SDG, SJQ, SSD, SSI, V, VA, VQ

### Customer Specific Nomenclature

