

Specification Sheet

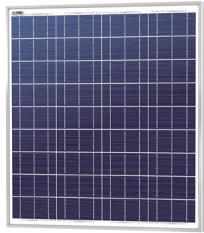
65watt Solar Panel Kit

Model No. RS-SPK65

The REDi-lite 65watt Solar Panel Kit includes a high efficiency Multi crystalline PV panel which is mounted using either tile or metal roof bracket systems. The kit also includes 10m of DC Solar cable which is run from the Solar Panel down to the light fittings.

Solar Panel - 65watt

- Nominal - 24VDC
- Voltage max (Vmp) - 34.4v
- Current max (Imp) - 1.89A
- Size: 774 x 675 x 30mm



*Data sheet available

DC Solar Cable

- 10m of 2 core flat twin sheathed
- 1.84mm² Tinned copper wire
- V90 Insulated & 5V90 Sheathed
- UV Protected

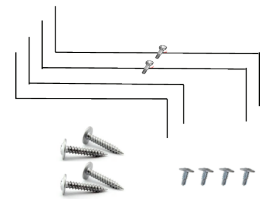


*Data sheet available

Standard roof mounting bracket options

Tile Roof

- 4 x adjustable stainless steel brackets
- 4 x 12mm button head SDS screws
- 4 x 25mm button head screws



Metal Roof

- 4 x aluminium brackets
- 1 x rubber flashing
- 4 x 12mm button head SDS screws
- 4 x 25mm button head screws
- 4 x 25mm type 17 hex head screws



Heavy-duty cyclone rated mounting bracket kits (optional)

Heavy-duty cyclone rated Roof mounting bracket kits

Tile Roof

- 4 x tile brackets
- 4 x adjustable end clamps
- 4 x rail lugs
- 12 x 14g 10 TPI Tek's T17 (buildex screws)



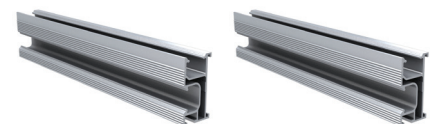
Metal Roof

- 4 x aluminium tin brackets
- 4 x adjustable end clamps
- 4 x rail lugs
- 4 x rubber washers
- 1 x rubber flashing
- 4 x 14g 10 TPI Tek's (buildex screws)



Aluminium Mounting Rail

- 2 x 850mm long rail



Notes:

- *All holes are to be pre-drilled
- *Each tile bracket must have a minimum of 3 screws
- *Refer to the Wind Region Table to determine mounting bracket spacing.