

The Congers  
Railroad Station  
played an important role  
in the History of  
The Orphan Train ERA  
(1853-1929)



Anne Courter arrived  
on an Orphan Train  
to Congers in 1878.  
She was taken in by a  
Farm Family in 1878.  
Tragically she died  
three months later.  
She was part of the  
largest migration of  
children in American  
history.



Homeless ..  
.. Children.

THE CHILDRENS' HOME SOCIETY

HAS PROVIDED

2990 Children With Homes, in Families.

All children received under the care of this Association are of **SPECIAL PROMISE** in intelligence and health, and are in age from one month to twelve years, and are sent **FREE** to those receiving them, on ninety days trial, **UNLESS** a special contract is otherwise made.

Homes are wanted for the following children:

**8 BOYS** Ages, 10, 6 and 4. Brothers, all fine, healthy, good looks. Of good parentage. Brothers 6 and 4 years; English parents, blondes. Very promising, 2 years old, blonde, fine looking, healthy, American; has had his foot straightened. Walks now O. K. Six years old, dark hair and eyes, good looking and intelligent, American.

**10 BABES** Boys and girls from one month to three months. One boy baby, has fine head and face, black eyes and hair, fat and pretty; three months old. Send two stamps.

**REV. M. B. V. VAN ARSDALE,**  
General Superintendent.

Room 48, 280 La Salle Street, CHICAGO.

*For more info email  
us at:  
totrwriter@aol.com*



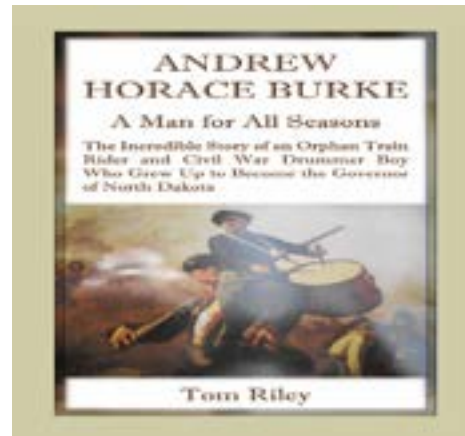
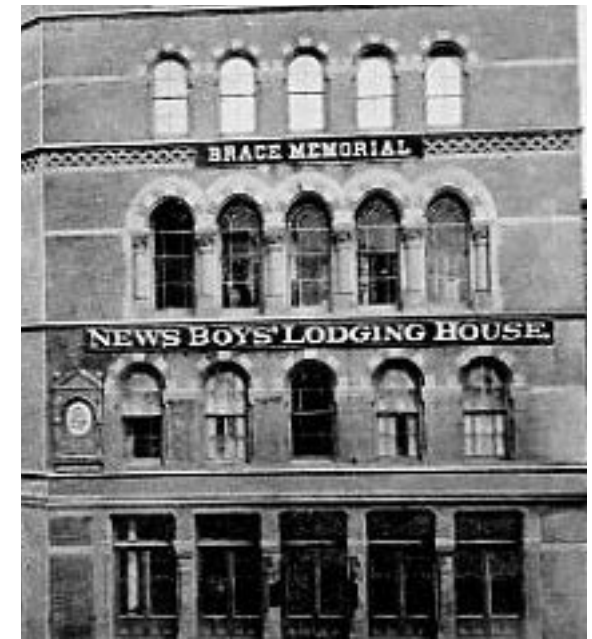
**THE ORPHAN  
TRAIN ERA  
(1853-1929)**

**COME TO THE  
CONGERS RAILROAD  
DEPOT APRIL 23RD-  
SUNDAY 12PM - 3PM  
FOR A LECTURE/  
VIDEO WHERE YOU  
CAN FIND OUT WHAT  
HAPPENED TO ANNIE  
COURTER WHEN SHE  
ARRIVED IN  
CONGERS**

**For more info call  
845-300-4296**



In 1878 Ann Courter got off an Orphan Train at the Congers Railroad Depot and was taken in by a Farm Family. She was 7 years old. She passed away 3 months later after contracting an illness. This program is dedicated to her memory.



If you would like to know more about the Orphan Train Era (1853-1929) please go to Tom's Web Site at: [www.theorphantrainriders.com](http://www.theorphantrainriders.com)

The Orphan Train Riders were America's first foster children. The trains also left from Boston, Chicago and Philadelphia. Scholars estimate 400,000-600,000 children rode the Orphan Trains

