



THE PEBBLE MINE

**RISKS TO SALMON, COMMUNITIES AND JOBS
CONFIRMED IN RECENTLY RELEASED MINE PLAN**

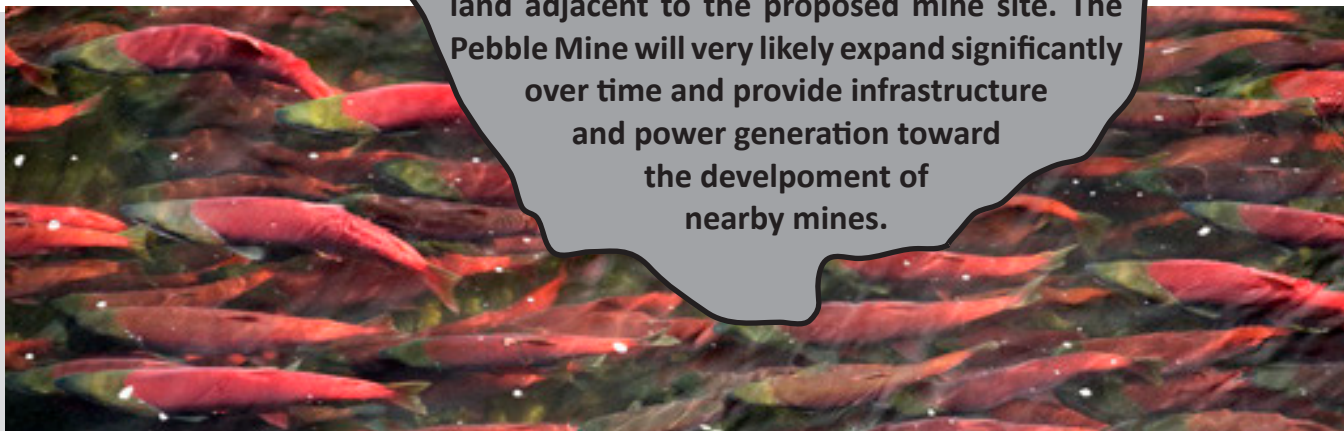
Pebble Deposit = 10.8 billion tons of ore
Current Plan = 1.2 billion tons of ore



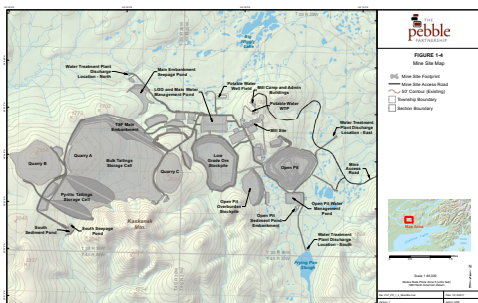
The company has not relinquished mining claims on hundreds of square miles of state land adjacent to the proposed mine site. The Pebble Mine will very likely expand significantly over time and provide infrastructure and power generation toward the development of nearby mines.

Recently, the Pebble Partnership submitted its federal permit application to develop a massive open pit mine at the headwaters of Bristol Bay, Alaska - home to world-class salmon rivers. A review of their plans confirms that:

- The Pebble Mine would irrevocably damage Bristol Bay's salmon runs, clean water, and wild landscape.
- The current application is for phase one only and will require wastewater treatment into perpetuity. No mine of this size and type has operated without impacts to ground and surface water in North America.



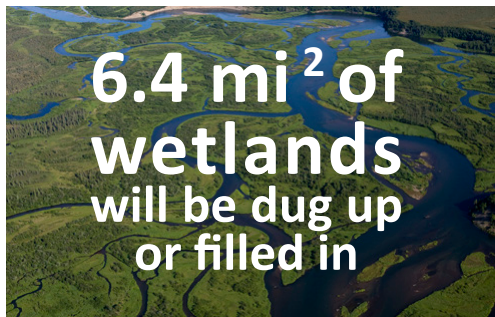
THE MINE PROPOSAL



Approximate area of the mine and associated infrastructure

15 mi² footprint

An open pit mine up to **1,750 feet deep and over a mile wide & long** in the headwaters of the largest sockeye salmon run in the world.



6.4 mi² of wetlands will be dug up or filled in

Private road system nearly 100 miles long to haul minerals and mine waste would cross Lake Iliamna and salmon streams (200+ times), including famed Upper Talarik Creek & the Gibraltar River.



A 188 mile pipeline from a new natural gas facility on the Kenai Peninsula

A new permanent **deep-water port** in Cook Inlet

Billions of gallons of wastewater discharged each year, including into the headwaters of the two biggest river systems in the region



More than **99% of all comments—2.5 million+ in total** — were submitted to the EPA in opposition to the mine.



MORE INFORMATION: SaveBristolBay.org