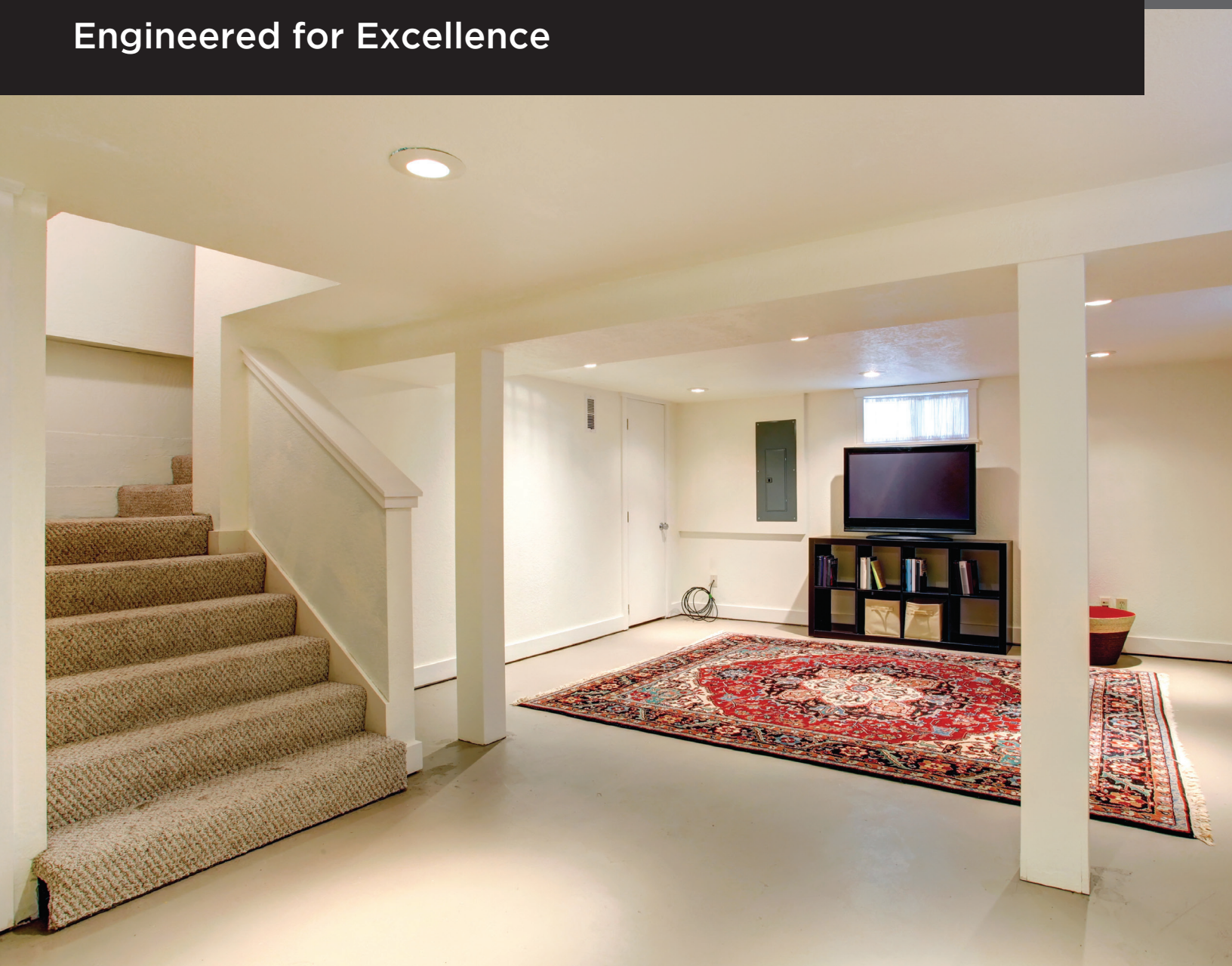
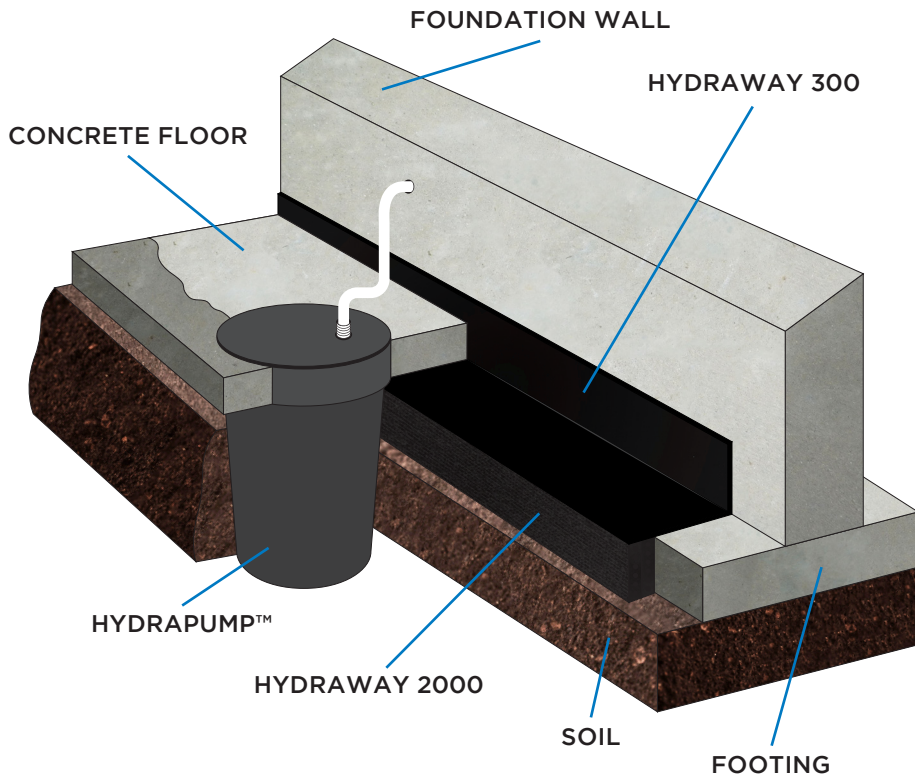


# HYDRAWAY WATERPROOFING SYSTEM

Engineered for Excellence



# HYDRAWAY 2000 SYSTEM



## HYDRAWAY 2000

Removes up to 70% more water than conventional rock and pipe “drain-tile” systems and never clogs!

## HYDRAWAY 300

Captures water at the foundation’s weakest point — where the footing, the wall, and the floor meet.

## HYDRAPUMP

Captures water from the Hydraway system and routes it through drain pipes to the exterior of the home.



HYDRAWAY® 2000



HYDRAWAY® 300



HYDRAPUMP™



HYDRASHIELD™

## INNOVATIVE TECHNOLOGY, PROVEN SUCCESS

Hydraway® has built a great reputation protecting investments of homeowners through innovative technology in waterproofing. Hydraway® can be installed in your basement, crawlspace, used for exterior drainage, and installed behind retaining walls.

Hydraway® will capture water before it enters your basement, relieving hydrostatic pressure and resulting in a dry, comfortable area. Utilizing a four step process, Hydraway® Drainage System protects your largest investment.

## STEPS TAKEN

1.

Our certified installer removes a small section of the floor in the impacted area. (Shown: 3000 System)



2.

Small weepholes are cored beneath the floor slab to release hydrostatic pressure (block walls only).



3.

The Hydraway® System, consisting of Hydraway® 2000 and Hydraway® 300, is inserted. (Shown: 2000 System)



4.

Removed section of the concrete floor is repoured to original thickness, ensuring its structural integrity.



4.

The sump pit and pump is installed and connected to a discharge line to carry water away from your home's foundation.



## WHY USE HYDRAWAY?

Proven history of successful installations worldwide — residential, commercial, and industrial.

Capacity to handle 70% more water than other methods — greater relief from hydrostatic pressure.

Polypropylene filtration insures the Hydraway® System will never clog; No known failures worldwide.

Fusion bonding of the filter to the core adds significant strength to withstand extreme conditions.

Our professional installers are certified in order to get the job done right the first time.

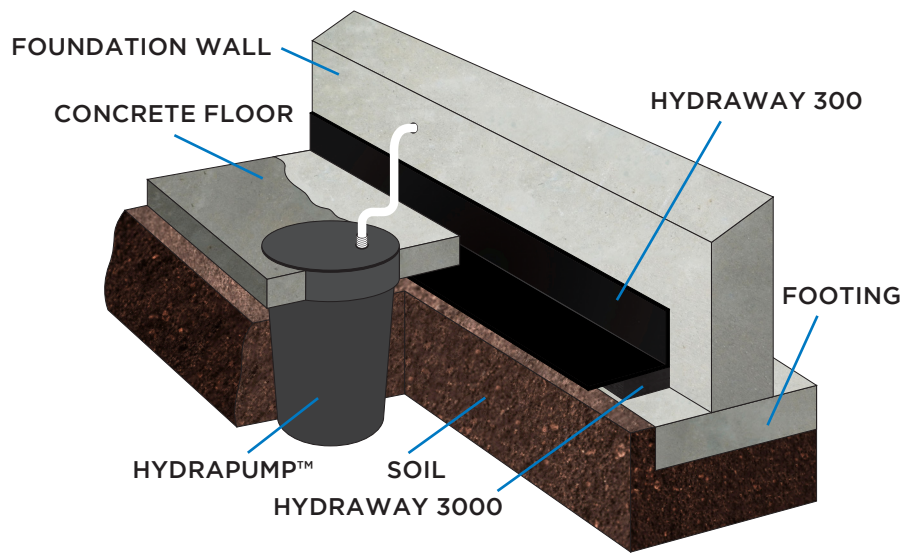
Using the Hydraway® System effectively increases the resale value of your greatest investment — your home.

Your basement or crawlspace will remain dry **GUARANTEED!**

# HYDRAWAY 3000 SYSTEM

In certain circumstances in areas with minor hydrostatic pressure and floor cracking, we offer the Hydraway® 3000 system as an economic waterproofing solution.

By installing the Hydraway® horizontally on the footing, this reduces digging and concrete removal. Using this process may reduce labor costs up to 20%.



## CRAWLSPACE WATERPROOFING

The Hydraway® System can also be used in crawlspaces to protect your home and foundation from water damage. Once a trench is dug around the perimeter of the foundation, Hydraway® is installed and then the excavated soil is backfilled.

After the Hydraway installation in a crawl space, it is recommended that the dirt be covered with vapor barrier to minimize the impact of moisture vapor transmission.



BEFORE

AFTER

# HYDRASHIELD WALL PANELING SYSTEM

Are you embarrassed to show anyone your dark, dirty basement? Are your basement walls water-stained or cracking? The Hydrashield™ Wall Paneling System, used in conjunction with the Hydraway® Waterproofing System, can brighten up an unsightly basement. We will transform your damp, ugly basement into a dry, comfortable, functional living space.

## BEFORE HYDRASHIELD



## AFTER HYDRASHIELD



## BENEFITS

Consists of rigid panels secured directly to your basement walls, as each panel is custom fit with matching connectors.

Greatly brightens up your basement.

Extremely durable

Easy to clean - simply wash off any dirt

Replaces the “painted on” coating which will peel and eventually allow water to penetrate through the walls.

## BEFORE HYDRASHIELD



## AFTER HYDRASHIELD



# SUMP PUMPS, PITS, & BACK-UPS

Once the Hydraway® System drains water from your basement or crawlspace, the water needs somewhere to go. Once installed, the Hydraway® is connected to a sump pit that is situated within the soil. Inside the sump pit contains your sump pump that pushes the water up and out of your basement through the discharge hose.

For added peace of mind, we offer single, double, and triple sump pump systems to accommodate even the most extreme situations. In the event of a power outage or a primary pump failure, our custom options have you covered. During a high water event in the sump pit, a back up unit will automatically engage when the secondary float system is activated. In the case where three sump pumps are installed in a single sump pit, that's just additional peace of mind knowing you are protected.



## COMMERCIAL USES

The Hydraway® Drainage system has been installed not only in homes, but in various commercial applications worldwide. Hydraway® has been used in synthetic and natural sports turf fields, as well as golf courses, roadways, irrigation systems, and pond liners. Engineers choose Hydraway® due to its high compressive strengths, inflow rate, and guaranteed results.



# HYDRALINER CRAWLSPACE ENCAPSULATION

Hydraliner™ will provide complete protection in crawlspace and basements that retain water or moisture, which can create potential rot. The exposed earth beneath your home can in turn, impact the structural integrity of the home or your health. Moisture can also breed a variety of living organisms from mold spores to insects.

BEFORE HYDRALINER



AFTER HYDRALINER



## BENEFITS

Hydraliner™ serves as a blockade to invasive animals such as termites, beetles, rodents, or snakes.

These invasive animals can cause damage to exposed wood, thus putting your home at greater risk.

Mold can generate toxins harmful to you and your family.

Humidity levels can range from 50%-90% in a crawlspace, which are perfect conditions for mold to grow.

Hydraliner™ will help prevent mold in and around your home, leaving less allergens in the air.

BEFORE HYDRALINER



AFTER HYDRALINER



# ENGINEERED FOR EXCELLENCE

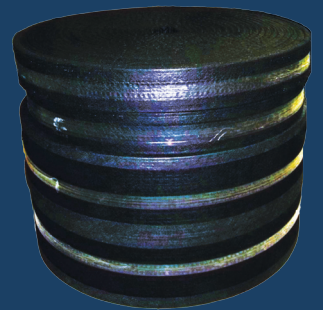
## HYDRAWAY® 2000

The specially engineered design of the Hydraway® 2000 permits high flow rates for rapid dewatering of the soil, while effectively preventing passage of soil particles. It is made of a heavy-duty, clog resistant geotextile fabric, permanently bonded to lattice core of 75% available open space for water. The design of Hydraway® allows it to relieve hydrostatic pressure by acting as a shallow underdrain. The Hydraway® 2000 is a cost effective and superior performing replacement for the “French” drain, or other conventional “drain-tile” systems.

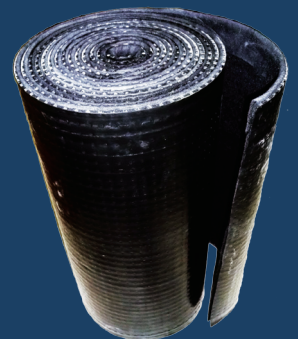
## HYDRAWAY® 300

Hydraway® 300 is widely used to relieve hydrostatic pressure against subsurface structures. This system provides a built-in protection board in a one-piece construction.

Other applications: Retaining Walls, Exterior Foundations, Planter boxes, Landscaping, and Sub-Slab Construction.



HYDRAWAY 2000



HYDRAWAY 300

**Hydraway**®