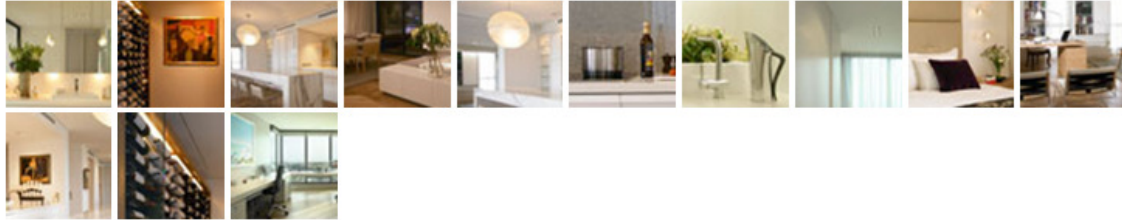


ATTICUS & MILO

Project :: Penthouse ~ The Melburnian



In this month's 'Project in Focus' we take a glimpse at the Penthouse in The Melburnian in Melbourne Australia.

A glamorous, seductive interior that applies precious silvers, pearls, platinum and quartz tones with subtle colour accents and raw textural contrasts such as the fumed oak floors, to complement and enhance the significant art collection. The decor scheme is subtle and calm, allowing the artworks and the wonderful Melbourne views to do the talking. We imagined our clients sipping champagne at the bar, conversing about the day and enjoying the city lights beyond, cocooned in a luxurious but understated interior that provides an everyday antidote to the current woes of the world!

We found just the right palette of textures with absolutely gorgeous key textiles in champagnes, golds and pewters from Andrew Martin, Zimmer Rohde & Designers Guild, metallic wallpaper from Schumacher, and earthy travertine tiles from The City Tiler and waxy Corian slabs contrasted with glossy Akril panelling and polished Calacutta marble.

The brief was to gut the existing fitout and open up the space, which felt cluttered with 4 bedrooms and tight passages, to suit a couple who entertain frequently and wanted the living space to comfortably accommodate large groups of friends and better exploit the magnificent views. We created a light and airy one to two bedroom apartment, but due to site restrictions, we had to work with the existing plumbing positions, which was a challenge! The main bedroom has ocean views and a large elegantly fitted WIR (also with stunning views), and we also opened up the ensuite to the bay views using a large sliding window over the bath. The apartment has two large fitted studies (his and hers), one of which can be readily converted to a second bedroom with its own ensuite, which doubles as the apartment's powder-room. We also opened up the living space

by creating a floating fireplace between living and dining and concealed sliding doors for the new library/study, which now flows into the main living area making it much more expansive. We created a new bar and glass walled cellar, oriented towards the city and skyline views, which form a spectacular backdrop in the evenings.

The kitchen has concealed sliding doors that can be used to close it off for caterers when entertaining, and has a stunning metallic wallpaper splashback, with structural columns concealed in the joinery (we felt these were not satisfactorily resolved in the existing kitchen design). When the doors are open the kitchen also enjoys inspiring city views. A large laundry accommodates a 4m wall of floor to ceiling multi-purpose storage. We used beautiful lighting fixtures from Hub including the glowing translucent woven fibre glass Post Krisis by Catellani & Smith over the bar and dining table and Bocci 14.1 pendants in the bedrooms and ensuites. Motorised sheer curtains and sunscreens provide protection from the elements, whilst well-fitted custom cabinetry throughout provides ample storage. Carefully selected furnishings such as the Poltrona Frau oak and leather dining chairs, Atticus dining table by Hub and JJ armchairs by Antonio Citterio (one of Caecilia's favourite architect/designers) in the library complete the scheme.

- Sofa fabric Westbury Vellutto
- Living area cushion fabrics Designers guild
- Fireplace cushion Andrew Martin
- Kirk brummel study cushion fabrics
- Contemporary leathers Verona on stools
- Schumacher wallpaper in kitchen
- Zimmer Rhode Togo sheer curtains
- Warwick on ottoman
- Wortley group linofino on bedhead
- Zepel Glinka on bed cushions
- Andrew Martin on walk in robe stool

There are also some amazing artworks by Whitely. Olsen Blackman Glover etc.

For more information contact:
Atticus & Milo - Ph: (03) 9882 0088
89 Auburn Road Hawthorn Victoria 3122
Email: interiors@atticusmilo.com.au
www.atticusmilo.com.au

RADFORD

DESIGNERSPLACE

Find Australian designers and see their work.

DAVID CLARK ON ATTICUS & MILO



EDITOR - VOGUE LIVING

What struck me first about this interior was the floor. The wide floorboards placed diagonally create an unusual and bold statement. The colour and finish complement the palette in the rest of the interior, and the finish on the joinery work throughout looks of a very high standard. I particularly like the slab of marble in the hearth of the fireplace. And the wine room, which is a real indulgence, but clearly places one of the owners' passions at the centre of entertaining space.

Also interesting to me is the bedroom. Something I see more and more is a bedroom that is designed to feel like a luxury hotel room. Here, with the bathroom behind the glass wall, there is a 'boudoir' mood which makes for a sexy space overall.

The study/library is a lovely room, especially because it opens to the outside. It's the kind of space I'd love to read a book in or do some research in. The stools used for reading heavy

books is nice idea. The placement of the two chairs though is a little odd for a domestic space, unless this room is used professionally as well.

I really like the detail in the door handles of the dressing room. You could comfortably get a good hold of those and they look smart.

David Clark

