



memory
MAKER

Childhood sweethearts Dee and Nick have filled their home with personal collections that celebrate their life together

STORY & STYLING JACQUI MOORE PHOTOGRAPHY EVE WILSON

The original facade of Dee and Nick's 1930s two-storey California bungalow was maintained during their Hamptons-inspired renovation but it was given a fresh lease of life with new windows and paint in Dulux White Duck. The bright, spacious living room (opposite) enjoys views over the garden and pool area thanks to floor-to-ceiling windows. "This is such a beautiful space," says Dee (pictured). "It's where we all tend to hang out." The centrepiece of the room is the family-sized and exceptionally comfortable 'Gentry' sofa, designed by Patricia Urquiola for Moroso and bought at Hub Furniture. The cool colour scheme is echoed in the Carrara marble-topped 'lko' coffee table from Jordan. >





When Melbourne couple Dee and Nick met as teenagers on the school bus, never in their wildest dreams could they have imagined that more than 20 years later, they'd be filling their eighth home with treasured mementoes gathered during their life together. Take the Sid Dickens 'Memory Blocks' above their fireplace (see page 125): the love heart was given to Dee by Nick on their first wedding anniversary; the births of their children, Paris and Sam, were marked with blocks depicting a princess and the letter "S"; and, as further family milestones were reached, more were added.

Today, there are 20 blocks, each telling a story. "We didn't set out to build a collection," explains Nick. "I bought the first one for Dee as something small we might just put on a table. But we really liked them and began to collect them to mark special occasions."

The blocks now live in the sitting room of Dee and Nick's beautifully restored home in Melbourne's eastern suburbs. The seasoned renovators have lived here since 2012, when they first spied the 1930s-era California bungalow, sitting on a quarter-acre block and overgrown with shrubs and old rose bushes. They soon earmarked it for their fifth – and hopefully final – renovation. "I loved it the moment I walked through the door," recalls Dee. >

SITTING AREA (left) What appears to be a simple seating nook is actually a double-storey light well. It's one of Nick and Dee's favourite features. "Our brief to the architects was almost entirely based around having lots of natural light – and they certainly delivered," says Dee. "It's always beautiful here, no matter the weather." The area is simply but effectively furnished with Potocco 'Tenso' chairs by Mauro Lipparini from Cosh Living, as well as an oak SCP 'Calvo' side table and sculptural Bocci '21 Series' ceramic cluster lights, both from Hub Furniture. The overall feel is peaceful and contemporary.

"I'VE ALWAYS LOVED *bright* HOMES AND THE HAMPTONS LOOK" ~ DEE



HALLWAY (above left) The spectacular layout of the extension and garden beyond unfolds as soon as you walk through the front door. The vista through the floor-to-ceiling windows takes in the long, rectangular Bisazza glass mosaic-tiled water feature, as well as the all-weather entertaining area, and continues through into the garden. The simple 'Ilford' nautical pendant was found at Tigger Hall Design.

LIVING ROOM (above right) Cushions from Jordan, including the blue-toned floral 'Kaino', are layered on the sofa. The three-level oak and metal Alki 'Oreka' coffee table from Cosh Living is the perfect spot to display favourite decorating books and flowers.



KITCHEN The room's combination of Calacatta marble splashbacks and surfaces with hardware-free joinery is an exercise in beauty, simplicity and restraint. "I love cooking so I'm always in the kitchen and can see everything from here," says Dee. The Alki 'Kushkoa' oak stools from Cosh Living add warmth to the otherwise cool space, while Dee's penchant for minty-blue tones is picked up in her Gordon Ramsay 'Maze' dinner set by Royal Doulton. The flower-filled basket is from Safari Living.

DINING (opposite, bottom right) "We entertain a lot," Dee says. "When both our families get together there's at least 16 of us." The couple turned to interior design firm Atticus & Milo to create something that would fit the bill. The result is this beautifully proportioned oak table crafted by Charles Sandford, which is paired with Thonet's 'Le Corbusier' chairs. Twin 'Coco' pendants from Coco Flip are sculptural by day and provide a soft glow at night. The couple's much-loved David Bromley work, *Children's Boat Adventure*, bought by Nick before they moved in, makes a colourful statement.



ARTWORK (OPPOSITE, CENTRE LEFT)
URBAN WALL WITH COWS, DARREN DOYE

FLOORBOARDS

Wide French oak floorboards in 'Mocha', \$100/sqm, Connollys Timber & Flooring.

WE LOVE

Sculpted greenery

"This is one of my favourite spots," says Dee, who had award-winning landscape designer Nathan Burkett create the stunning garden.

His signature "living pergola" of pleached plane trees frames the fireplace seating area (opposite, bottom) with the sparkling pool on one side and high ficus hedges on the other; nathanburkett.com.au.



Dee project-managed the 18-month renovation, transforming the dilapidated and rambling house into an expansive, four-bedroom, Hamptons-style abode that they would call home. Although an experienced renovator and decorator, she wanted some external input for this very personal large-scale project, so for the first time enlisted the help of interior designers, in the form of Atticus & Milo.

The original residence had a good solid structure, so while internal walls were removed to create large interconnecting spaces, and old windows were replaced, the facade remains the same. Downstairs, the house opens up in spectacular fashion. From the wide hallway there is an uninterrupted view past the living and dining rooms through floor-to-ceiling windows – which signal the start of the new extension – over a mosaic-tiled water feature and an all-weather entertaining zone. A little further and a series of pleached plane trees create a living pergola, which leads to a sunken outdoor fireplace and pool area. Upstairs, there is a bedroom and bathroom each for Paris, 13, and Sam, 15, along with a rumpus room and a guest bedroom. “The kids love the house,” says Dee. “I wanted them to have their independence, and different spaces to choose from. If Paris has her friends over and they’re in the rumpus room upstairs, Sam can hang out with his mates outside.”

Where Dee’s passion is decorating and creating beautiful interiors, Nick’s is collecting the contemporary art that fills them. “It’s an eclectic mix,” he says. “There are lots of styles and a really good representation of our personalities and different stages of our lives. I don’t care about a particular theme, I just buy what appeals and worry about how or where it might fit in later!” he laughs. And it seems Nick’s collection will be hanging on these walls for some time yet. “I’ve really enjoyed renovating our homes but feel that this is the last one,” says Dee. “This is where the kids will grow up and do everything they need to do before they up sticks and go on their way.”

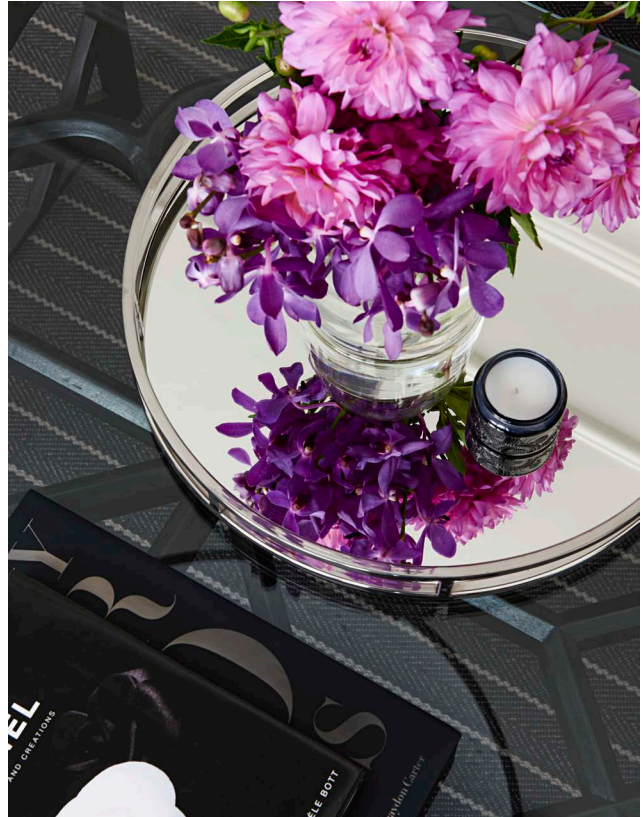


“WE LOVE NOTHING MORE THAN HAVING friends and family OVER” ~ DEE



OUTDOOR ENTERTAINING (above & top) A high priority for Dee and Nick was enhancing their indoor-outdoor lifestyle. The outdoor dining table was designed by Atticus & Milo to the same specifications as the table in the dining room, but with an all-weather Pearl Grey Corian tabletop. White ‘Vela’ dining chairs from Space are a breezy touch. “There are usually people here every weekend,” says Dee. The seasoned entertainer presents simple food stylishly on minty blue plates from Gordon Ramsay for Royal Doulton and a HK Living marble serving board.

POOL AREA (left & opposite) Paris and Sam sit by the pool with the family dog, Roxy. The Pendleton beach towels from Third Drawer Down pick up on the home’s overall blue-hued colour palette. Find similar sun lounges at Globe West. >



“WHEN I SEE A PIECE OF ART, I *know* STRAIGHT AWAY THAT I *like* IT AND I WANT TO BUY IT” ~ NICK

SITTING ROOM (above & above right) Some of Dee’s favourite things from previous homes are featured here, including a much-loved sofa that has been updated with a selection of cushions and a Missoni throw from Safari Living. The coffee table was also an existing piece but stained a darker colour to blend in with the new look. It is now decorated with a mirrored tray from Rose St Trading Co and an array of graphic, monochrome vessels from Meizai. A Flos ‘Skygarden S’ pendant by Marcel Wanders was sourced overseas but is available in Australia from Euroluce.

FORMAL DINING (right) A table from Cosh Living forms the centrepiece of this setting for special family events. A smaller Flos ‘Skygarden S’ pendant and black lacquered Chippendale-style chairs, upholstered in a Regency-style striped fabric from Casa Mia, complete the look. The minimalist scheme is echoed in the painting *Impala* by Abbey McCulloch, which Nick bought from a Gold Coast gallery. “I loved its simplicity and thought it was very striking,” he says. “Initially, Dee didn’t think it was colourful enough but it has really grown on her.” A silver occasional table from Montebello Emporium set in the bay window adds a glamorous touch.



SITTING ROOM Sid Dickens' 'Memory Blocks' (try Domo) adorn the chimney breast and tell a story that's very personal to Dee and Nick. "I'd never seen one until Nick gave me the heart for our first wedding anniversary," recalls Dee. "It was so thoughtful and beautiful and I loved it straight away." A lacquered cane armchair beside the fireplace, one of a pair found at Gaudion Furniture, and Lisa Lapointe 'Under the Canopy' cushion provide a lovely textural and colour contrast to the sofa. >



MASTER BEDROOM The sophisticated and tranquil master bedroom suite occupies what was originally two rooms on the ground floor. The walls feature textured Phillip Jeffries wallpaper and the custom-made headboard, designed by Atticus & Milo, is covered in 'Roma' linen in Natural from Altamira. The bed is layered with linen from Sheridan and Bedouin Societe, dressed with cushions from Jardan and Fenton & Fenton, and finished with a light-as-a-feather Marigolde 'Gauze' throw from Safari Living. Two 'Pineapple' lamps from Rose Street Trading Co add a touch of fun.



WALLPAPER
Phillip Jeffries '5260
Bermuda Hemp' in
Elephant, from \$100/m,
The Textile Company.





"MY favourite PART OF THE RENOVATING PROCESS IS PUTTING IN ALL THE finishing TOUCHES" ~ DEE



WALK-IN WARDROBE (above left) A dressing-room stands at the junction of the master bedroom and ensuite bathroom. Its floor-to-ceiling cabinetry and Calacatta marble-topped central island bench are home to Dee's collection of shoes and handbags.

HALLWAY (top right) Roxy poses happily in the hallway, which has been lined in wide French oak floorboards in 'Mocha' from Connollys Timber & Flooring. The elegant spindle-back Ercol 'Originals Love Seat' doubles as a sculptural piece and was bought overseas (available locally through Temperature Design). It beautifully offsets the Kathryn Ryan painting *Wangoom Corner*, bought from Flinders Lane Gallery. The striped woollen runner is Roger Oates 'Halle' from Milgate.

ENSUITE (left) Floor-to-ceiling Calacatta marble creates a chic, minimalist feel. The same Phillip Jeffries wallpaper used in the master bedroom also features here, though not in the wet area. The timber-effect flooring is actually practical ceramic tiling found at Urban Edge Ceramics. The elegant tapware and towel rails were sourced from Rogerseller and a 'Malmo' stool by Middle of Nowhere (from Crate Expectations) adds a dash of Scandinavian simplicity. >



BLANKET
Kate & Kate 'The Love Letter' cotton blanket in Pink Icing, \$120/100cm x 85cm, Bungalow Trading Co.

PARIS'S ROOM Cole & Son 'Flamingos' wallpaper is used to stunning effect in Paris's bedroom. While the pattern is busy, the overall vibe is soothing thanks to the duck-egg blue and pink palette. The furniture is kept simple and elegant: the timber four-poster was made by a local joiner, the bedside table was found at Pottery Barn and the replica 'Horse' lamp was bought from Matt Blatt.



INSIDE STORY

Who lives here?

Dee, a stay-at-home mum; her husband Nick, managing director of a marketing agency; their children Sam, 15, and Paris, 13; and Roxy, a Bouvier des Flandres cattle dog.

Is the house exactly as you imagined?

Nick: "No. From when we first bought it and conceptualised the outcome, things changed constantly. But I think it has to be a fluid process and the finished house is a result of our evolving thinking and planning."

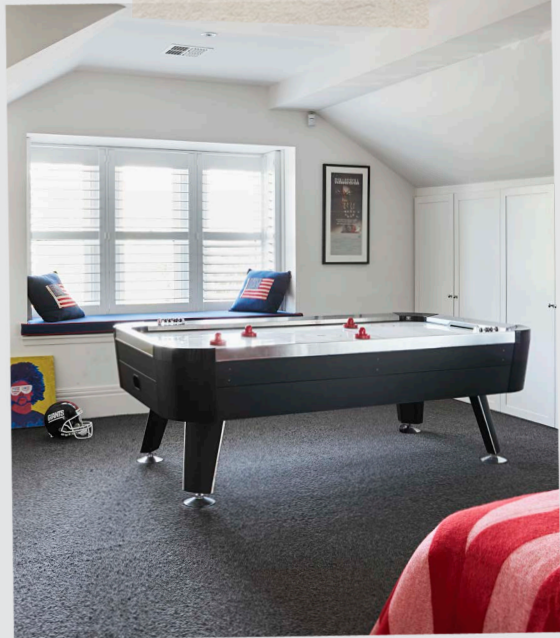
Do you have a favourite possession?

Dee: "I love the David Bromley painting in the dining room. Nick's the art man – he just knows what I'll love!"

Nick: "I saw a pair of portraits painted by Bromley in a house featured in *Home Beautiful* years ago. I did some research on him and Dee and I loved his work. When I found the painting in a gallery in Queensland, I knew Dee would love it as soon as she saw it."

Where do you seek inspiration?

Dee: "I gave Atticus & Milo a massive folder with tons of tear sheets from magazines featuring things I loved. They were really good at interpreting it, listening to our feedback and coming up with good solutions."

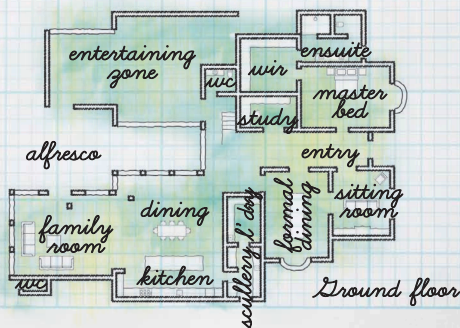
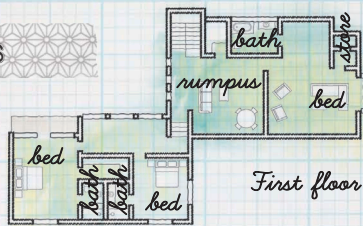


Sam loves hanging out in his cool loft, complete with an air hockey table found on eBay. A talented artist, he painted the portrait of musician Redfoo.



Fornasetti 'Nuvolette' wallpaper by Cole & Son (from Wallpaper Direct) adds drama to the powder room.

PLANS



CONTACTS

Interior designer

Atticus & Milo, (03) 9882 0088,
atticusmilo.com.au.

Architect

Catt Architects, (03) 9509 4650,
cattarchitects.com.

Builder

Dick Reynolds Building,
0419 996 102, drbuilding.com.au.