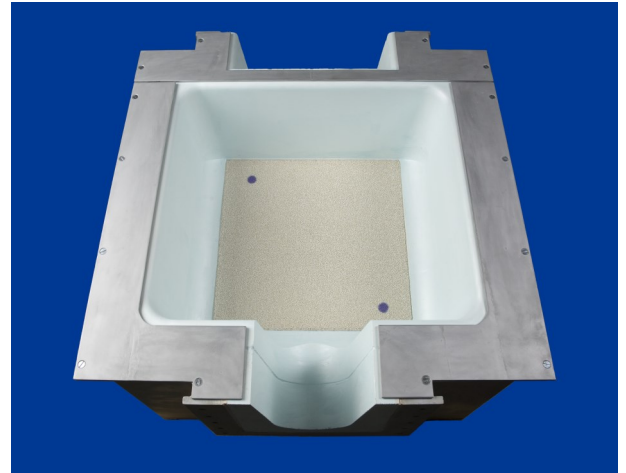


STAGED FILTRATION SYSTEM

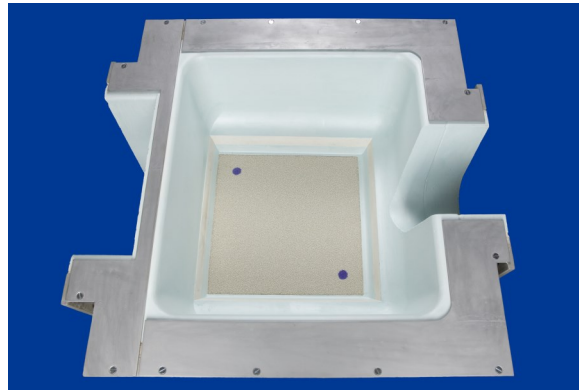
The Next Step in Melt Filtration Technology

- **High Filtration Efficiency:**
Easy to use
Operator acceptance
Highest possible inclusion removal
Innovative compact design
- **Flexible Technology:**
Use 1 or 2 filter elements as production demands
Just drain between casts to change alloys
- **Economic Operation:**
Low installation and variable operating costs
Use industry-standard size filter elements



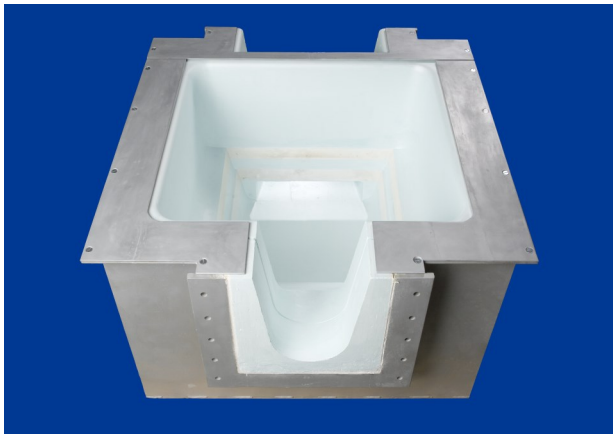
SELEE® Staged Filter Bowl with both filter elements installed

SELEE® Staged Filtration is a highly efficient process for removing inclusions from molten aluminum. A filter bowl with a second stage, finer pore filter element directly below the first stage element is the answer to increased quality requirements for fabricated aluminum products.



SELEE® Staged Filter Bowl with lower filter element installed

- **SELEE® Reliability:**
Aluminum casting know-how
Over 40 years of experience
Application Engineers
In-house design



SELEE® Staged Filter Bowl prior to installation of filter elements

The ceramic foam filter of SELEE® structure functions as a deep bed filter, retaining inclusions throughout its depth. Increasing filter thickness and decreasing filter pore size increases the deep bed filtration effect incrementally. SELEE's licensed staged filtration technology achieves this significantly higher capture by allowing the use of two filter elements of progressively finer pore size, resulting in maximal inclusion capture efficiency.

To learn more about how staged filtration technology will benefit your aluminum casting operation, please contact the

SELEE Corporation U.S.A.

700 Shepherd Street
Hendersonville, NC 28792, USA
Tel: (800) 842-3818 or +1 (828) 693-7785
Fax: +1 (828) 693-1868
E-mail: sales@selee.com