







 **Regional One Health**  
Center for **Innovation**

**Patients First – Problem Solved**  **Regional One Health**  
Center for **Innovation**

## What is the Regional One Health Center for Innovation?

		
Understand the problem	Looking at solutions in a different way, therefore failing a lot in order to succeed	Outcome is driven by our mission

**Patients First – Problem Solved**  **Regional One Health**  
Center for **Innovation**

## Regional One Health Mission



---


*To Improve the Health and Well-being  
of the People We Serve by  
Delivering Compassionate Care  
and Exceptional Services*

---

**Patients First – Problem Solved**




## Innovation is a Piece




- P** Proactive and predictive
- I** Improved costs
- E** Excellent care, compassionate care
- C** Create new revenue streams for the hospital
- E** Engagement


**Patients First – Problem Solved**




## Innovative Culture



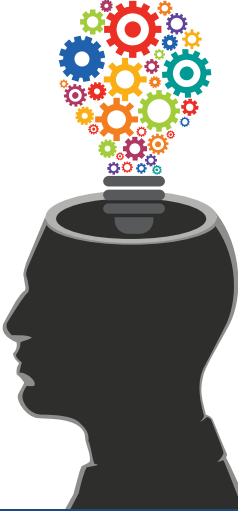
A vision  
communicated  
by the CEO




A movement  
by leaders to  
encourage change



An opportunity  
for anyone to  
participate

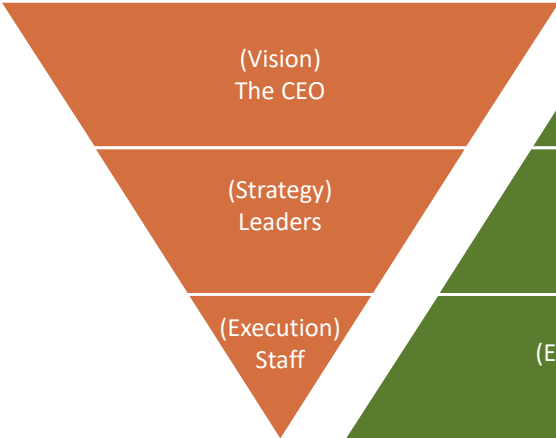


**Patients First – Problem Solved**



## Create the Culture

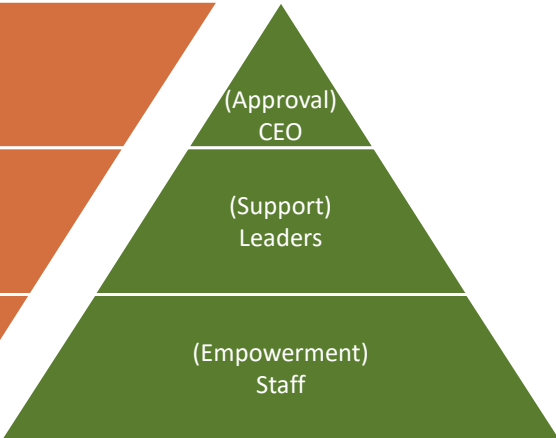
**VISION**



(Vision)  
The CEO

(Strategy)  
Leaders

(Execution)  
Staff




(Approval)  
CEO

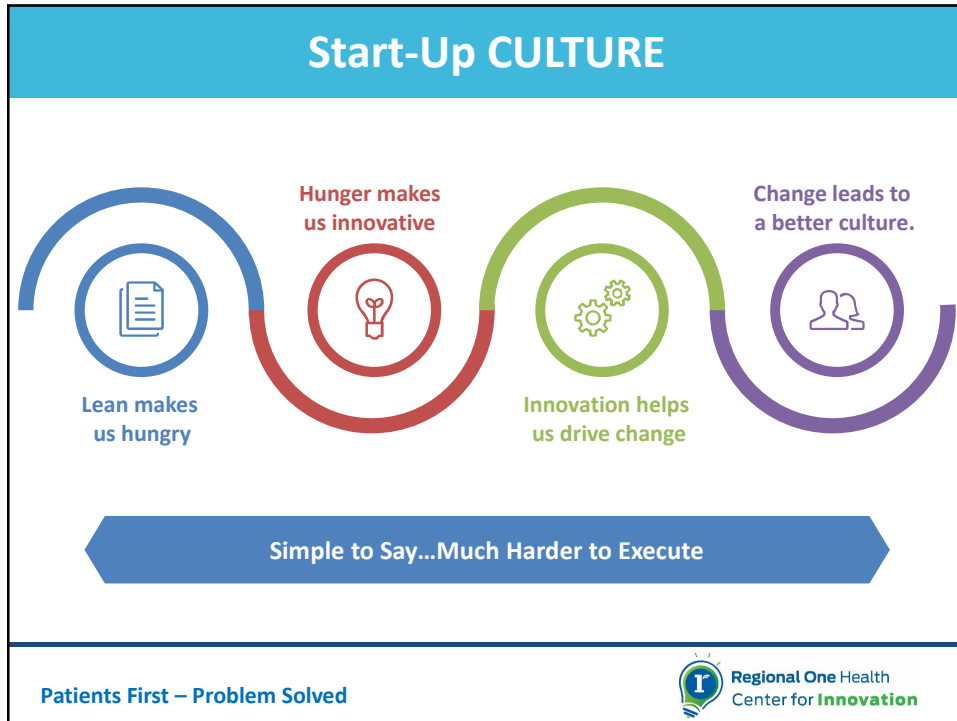
(Support)  
Leaders

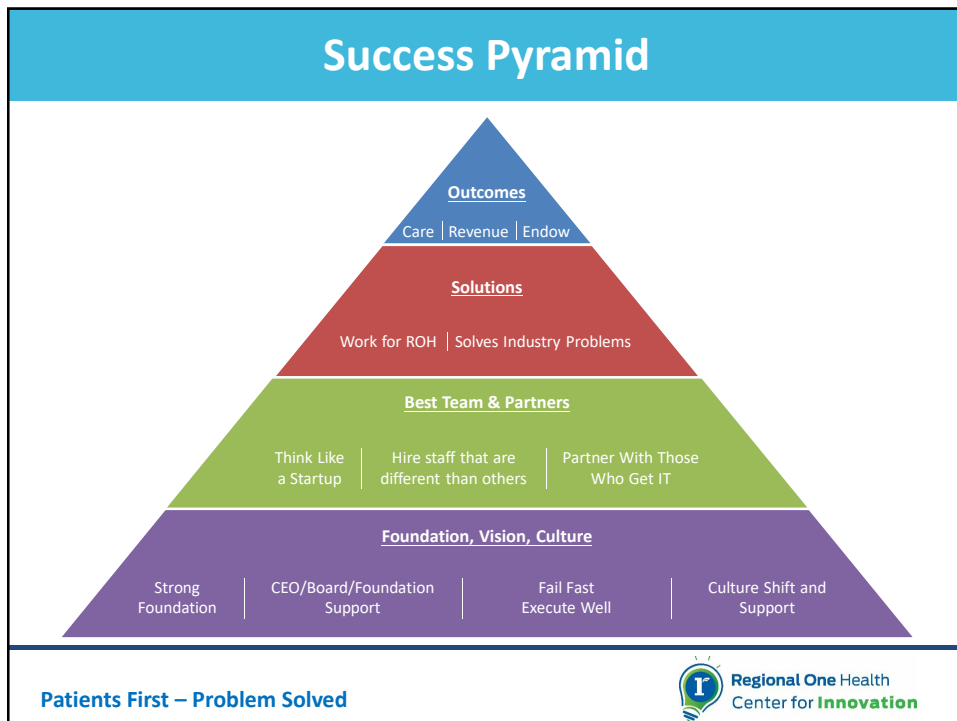
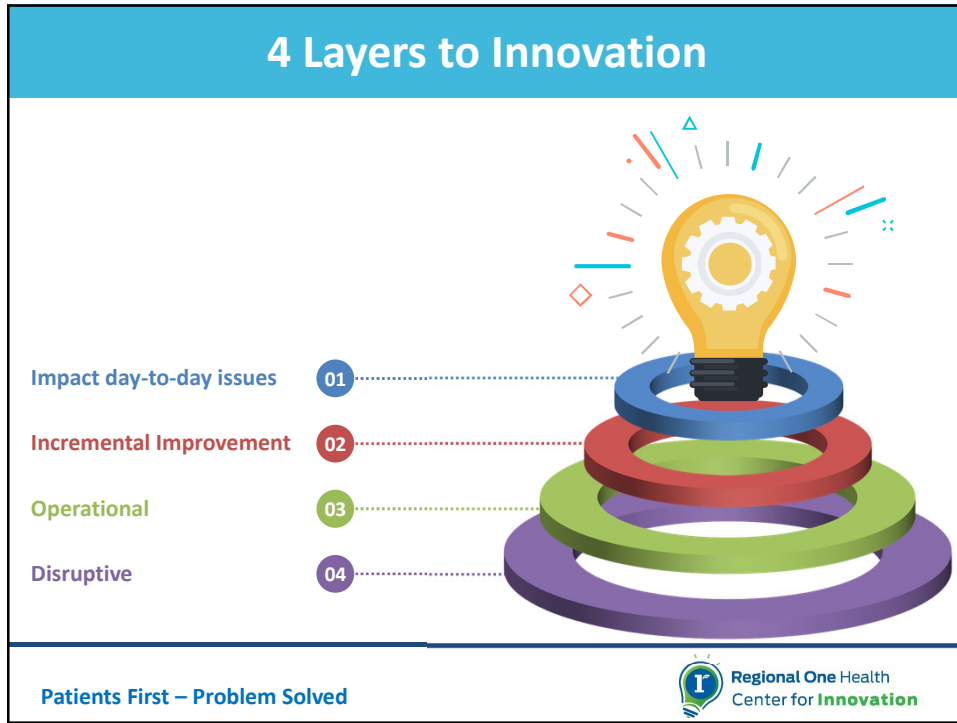
(Empowerment)  
Staff

**ENGAGEMENT**

**Patients First – Problem Solved**







## Hire the Best



*“It doesn’t make sense to hire smart people and then tell them what to do; we hire smart people so they can tell us what to do.”*

Steve Jobs

Patients First – Problem Solved



## Making a Difference

---

*Those who have made a real difference did it outside the box!*

---



Patients First – Problem Solved

