

PAVILION HOUSE YM

'Pavilion HouseYM is a symbolic divider between the world of mechanized convenience taken for granted and the wilderness. Located on an isolated stretch of Canadian shield, north of Haliburton, Ontario, the house is accessible only by boat or in the winter across the frozen lake. The dimension was directed by the size of the bronze tinted glazing that clad the entire Douglas fir superstructure, to retain contact with the surrounding granite, forest, and lake. Visitors feel that this simple edifice, with its reflective surface floating, is due in part to the sheer strength of the pier system and the cabins strategic placement.

01 Pier system on contour of site 02 Douglas fir superstructure clad with bronze tinted glazing 03 Cross ventilation 04 Kitchen 05 Floor plan



01



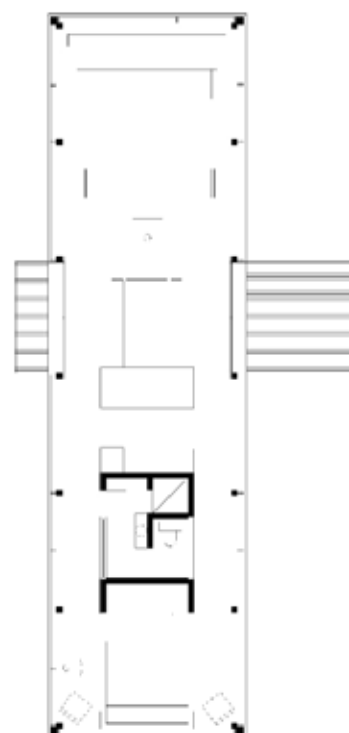
02



03



04



05