

THE ULTIMATE ALL SEASON OFF-ROAD PLATFORM



SINCE 1967

Argo 8x8
CENTAUR

2015

Third party accessories shown.

EXTREME TERRAIN VEHICLE SOLUTIONS



Welding equipment courtesy of Lincoln Electric.

The all season ARGO 8x8 Centaur is designed to meet the needs of commercial users operating in the toughest conditions imaginable, safely transporting crew, equipment, tools and gear to remote locations not accessible by traditional vehicles.



Applications

- People and Equipment Transport
- Construction and Maintenance
Power Lines, Gas Pipelines
Cable & Wireless, Remote Towers
- Oil & Gas and Mining
Exploration, Drilling Support,
Environmental Surveys
- Fire & Rescue
- Weed Control & Insect Abatement
- Defence Sector
- Estate Management

Features & Capabilities

- Versatile rear cargo platform
- Quick change of customized equipment
- Low cost of ownership
- Very low ground pressure
- Operates in flooded areas
- Crosses deep mud and marshy terrain
- 2 passengers
- Travels over deep snow and ice
- High altitude performance
- Overcomes obstacles and rocky terrain
- Hauls trailers and supplies

ARGO 8x8 Centaur is available in tracked or non-tracked configurations.

The ARGO 8x8 Centaur features a 958 cc, 34 hp (25.3 kw) Briggs & Stratton Daihatsu, turbo diesel engine and patented Centaurmatic transmission. It has a load capacity of up to 2000 lb. (907 kg) and a towing capacity of 2,200 lb. (1000 kg).

Safety

The Rollover protective structure (ROPS) with integral driver protection, 3 point passenger seatbelts and safety glass provide occupant safety and comfort. The ROPS is certified to ISO 5700.

The low center of gravity and full-time, eight-wheel drive coupled with the engine allow sure-footed traction and manoeuvrability through demanding weather and terrain conditions.

The Centaur is equipped with a standard emergency/parking brake and comes with a robust skid plate for lower body protection.

Stability

Low centre of gravity, lightweight design and wide tracks allow for safe operation in challenging terrain featuring 9" (225 mm) of ground clearance at the center of the vehicle.

The specified load capacity of 2,000 lb. of the Centaur is maintained in most off-road applications while the load capacity of UTV and other vehicles often is considerably reduced to allow for safe operation. The optional 4 or 8 wheel trailer provides an additional load capacity of up to 1,400 lb.

Convenience

The Centaur features a comfortable, hinged, front bench seat with easy access to storage compartment/toolbox, 12 volt outlet, grab handles and storage shelf. In addition, the engine compartment can be accessed from the inside or outside of the cabin. There is a wide range of accessories such as cab heater, universal mounting system for equipment, dump or utility box and flatbed.

Driver Operation and Control

The Centaur is driven with a unique dual-differential transmission that provides all the benefits of hydrostatic drive: smooth steering and full time traction to all axles without the high maintenance cost. Familiar operator controls including steering wheel, dash mounted gear selector, hand throttle and brake pedal will allow drivers to quickly adapt themselves with its operation. The excellent approach and departure angles easily overcome obstacles.

The instrumentation package includes:

- Fuel level
- Digital hour meter and odometer
- Speedometer
- Warning lights include:
 - Check engine
 - Park brake ON indicator
 - Oil pressure
- Tachometer
- Coolant temperature
- Voltmeter

The instrument panel also includes a HI and LOW shift lever plus ignition and light switch. Accessory switches are easily added via pre-located positions within the panel.

Water Crossing with a Forging Depth of 26" (660 mm)

With its sealed lower body, the CENTAUR 8x8 is designed to go through flooded areas or across shallow rivers and streams.



Welding equipment courtesy of Lincoln Electric.



33% increase of load capacity up to 2,000 lb. (907 kg) and easy access to engine compartment from inside and outside the cabin. Standard metal doors and versatile rear cargo platform.



Spacious cabin featuring more width, more legroom, new ergonomic steering system and 3 point seat belts. Ample storage area underneath padded bench seat.



Lincoln Electric welder not included.

New 8 wheel trailer with up to 1,400 lb. load capacity. Available with 24" (610 mm) or 25" (635 mm) tires as well as plastic or rubber tracks. Optional Universal Mounting System to easily install equipment. Hydraulic Power Packs are available.

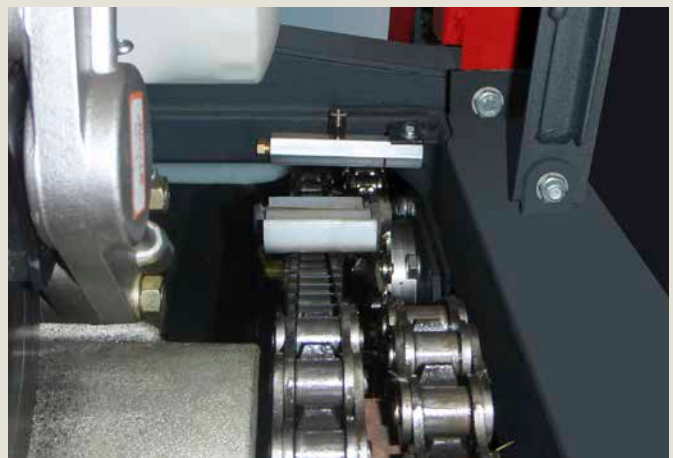


Optional, easily removable flatbed platform with access panel to storage area. Custom cargo configurations can be created by adding stakes, hinged or fixed side panels and tailgate. Electric dump box and utility box available.



Optional 18" (457 mm) HD rubber tandem or quad tracks with heavy duty UHMW-PE guides on high impact resistant 24" (610 mm) turf tires and reinforced rims.

www.argo.com/catalog/tracks



Automatic chain lubrication system featuring reduced maintenance requirements and longer chain life.



ARGO 8x8 Centaur with custom cargo box to transport core samples in challenging terrain.



ARGO 8x8 Centaur with Multi-Power drilling system for soil sampling.



ARGO 8x8 Centaur equipped with Maxilift crane and flat bed pulling 8 wheel trailer.



ARGO 8x8 Centaur with Arro-Gun sand fly abatement spraying system.



ARGO 8x8 Centaur Fire Chief with CET 80 gallon tank, foam system, fire pump and storage compartments.



Modified ARGO 8x8 Centaur platform for defense sector.

COMFORT



Cab Heater (848-110)
The CENTAUR can be fitted with a 17000 BTU cab heater, featuring a 3-speed dual fan motor to provide operator comfort in the harshest cold weather conditions.

CONVENIENCE

Auxiliary Alternator Kit (849-289)
150 amp auxiliary alternator. Fitted as a stand-alone option, it is belt driven to provide on-demand power when operating ancillary equipment.

Cargo Tie Down Bars (849-116)
Six rings mount around the rear compartment.



Dump Box (835-100)
Mounted to the main frame, the powered dump box improves the load carrying versatility of the CENTAUR.



Flatbed Platform (958-112)
66"W x 44"L (1675 mm x 1115 mm). Mounts to the main chassis and is supported by the upper frame. Includes four tie down points and a 32"W x 35"L (810 mm x 890 mm) hatch for easy access to lower body cargo area.



Helicopter Lift Kit (848-121)
4 connection points designed to lift vehicle via helicopter for remote firefighting, search & rescue and surveying.



Lightbar (Universal) (958-95)
Mounts directly to the hard top for installation of work lights, beacons, or spot lights. Lights not included.



Light Rack (848-192)
Increase visibility to the cargo area with three manually adjusted swivel lights.



Receiver Winch Kit (849-223)
The receiver option incorporates a winch brush guard, front and rear receiver mounting brackets and quick disconnect cables.



Snowplow (657-106)
81" (2 m) wide steel blade for straight or angled use. Attaches to the front main frame assembly. Requires power winch option to raise and lower snowplow blade.



Trailer
4-wheel: up to 600 lb. (270 kg) load capacity. 8-wheel: up to 1,400 lb. (635 kg) capacity. Complete with 24" (610 mm) or 25" (635 mm) tires. Contact Retailer or see Web site for more information. Lincoln Electric Welder sold separately.



Universal Mounting System (959-01) Quick-change, 750 lb. capacity universal mount, bolts directly to the main chassis offering a convenient structure to secure third party equipment.



Utility Box (958-168)
Custom .100" (2.5 mm) aluminum checker plate with stainless steel t-locks and gaskets. Lid and rear door include gas shocks and three-point lock. Allows full access to cargo area.

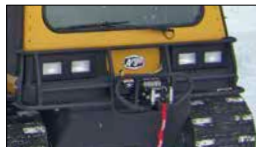


Winch Kit (622-144)
The 4,500 lb. (2,040 kg) winch mounts permanently to the front of the vehicle. Reversing, free wheeling out, 40 ft. (12.2 m) steel cable and 30 ft. (9.1 m) nylon strap, safety switch disabled unless ignition is on.

PROTECTION



Bilge Pump Kit (849-146)
Recommended for water crossing. Includes dashmounted switch and wire harness.



Brushguard (848-212)
Frame-mounted. Protects front end of vehicle.



Cargo Liner (848-209)
Made from welded steel, the cargo liner is an extension to the existing floor plates and increases lower body protection.



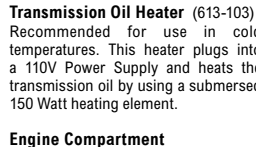
Catwalk Mudflaps (850-250)
6 1/4" (160 mm) steel platform along the length of the vehicle. Includes a 10" (255 mm) mud flap.



Light Guard (849-134)
Prevents brush and tree limbs from making direct contact with the vehicle driving lights. Installed as a stand-alone item or combine it with the brush guard.



Mud Flap Extenders (821-105)
For use with Snow or Multi-Purpose Tracks. Mud flap extenders bolt onto the upper frame assembly to keep mud and snow out of the cargo compartment.



Transmission Oil Heater (613-103)
Recommended for use in cold temperatures. This heater plugs into a 110V Power Supply and heats the transmission oil by using a submersed 150 Watt heating element.



Hydraulic power pack made by Chicago Pneumatic. Installation with quick connect ARGO Universal Mounting System (959-01).

TRACKS



15" (381 mm) Quad Rubber Tracks (849-150)
This 15" (381 mm) wide rubber track provides ultimate all terrain performance. Two tire wrap design complete with track tires.



18" (457 mm) Rubber Tracks (958-88)
Hinged rubber track, rubber sections wrap around 4 tires. Reduces ground pressure to 1.06 psi (7.23 kPa) at full payload.



18" (457 mm) HD Rubber Tracks - 2 pcs (958-88HD)
Fits over all 4 tires. HD rubber tracks feature UHMW-PE guides, aluminum backing washers, and heavy duty hinge lacing. Includes reinforced rims with impact resistant 24" (610 mm) turf tires.



18" (457 mm) HD Quad Rubber Tracks - 4 pcs (958-88-4HD)
Fits over 2 tires, resulting in a 4-track configuration.



22" (559 mm) Snow Tracks (849-160)
Ladder style, belted snow track, 22" (559 mm) wide for minimal ground pressure, 1.85" (47 mm) steel grouser for max. snow penetration.

FLATBED OPTIONS

3 Hinged Sides, Steel (958-124)
10" (255 mm) sides for flatbed. All sides fold down.

Stake Sides for Wood Panels (958-123) Includes nine stakes and pocket rails. Add your own material to finish the sides and rear.

2 Stake, Steel Cover + Rear Hinge Steel Covered (958-125) Easily removed when not required.

3 Sided Stake with Steel Covering (958-126)
Side options where all panels are secured via stake pocket rails.

FIRE FIGHTING AND SPRAYING SOLUTIONS ON REQUEST

CHICAGO PNEUMATIC EQUIPMENT



Hydraulic power pack made by Chicago Pneumatic. Installation with quick connect ARGO Universal Mounting System (959-01).

MAXILIFT CRANE SOLUTIONS



Maxilift compact and lightweight mono-boom cranes with outriggers available. Requires the use of auxiliary alternator (849-289).

Strength and Durability

- 3" (76 mm) tubular main chassis capable of transporting up to 2,000 lb. (907 kg) of total payload.
- 2" (51 mm) tubular upper frame is fastened directly to the main chassis, allows for easy accessory mounting and provides structural strength.
- The lower body is vacuum formed from High Molecular Weight Polyethylene featuring superior wear and impact resistance vs. fiberglass or steel even to temperatures as low as -40°F (-40°C), and it won't rust.
- Engine parts and transmission are well-protected from rocks and stumps to reduce the potential for damage.

Versatility

The ARGO 8x8 Centaur features an adaptable rear platform for mounting specialized equipment such as quick-change flatbed, cargo box, utility box, dump box, sprayers, spreaders, cranes, drills and fire & rescue solutions.

The new universal mounting system (UMS) facilitates the installation of most add-on solutions.

Low Environmental Impact

The ARGO 8x8 Centaur features eight 25" (635 mm), low pressure tires that provide an ultra-light footprint on sensitive terrain. When equipped with optional tracks, vehicle ground pressures as low as 1 psi (6.8 KPa) can be attained.

Compared to other UTV and tracked vehicles, the Centaur features one of the lowest ground pressure ratings in the off-road industry, and meets all EPA and CARB "whole vehicle emission and evaporative" standards and regulations.

In addition, the fully sealed lower body not only keeps water and dirt from entering into the vehicle, it also prevents oil, hydraulic fluid, antifreeze and other fluids from leaking out of the vehicle and into the environment.

Low Cost of Ownership

The patented CENTAURMATIC mechanical transmission and SAUER DANFOSS hydrostatic steering provide features and benefits found in more expensive hydrostatic drive systems.

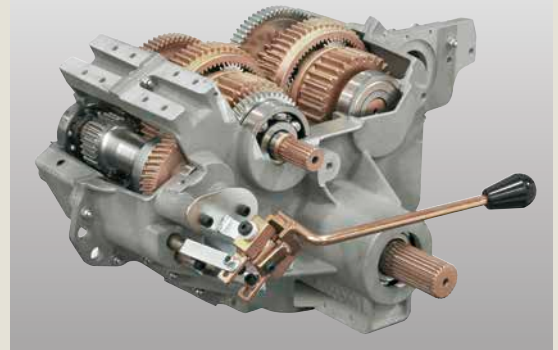
- Chain lubrication system automatically lubricates all drive chains via pressurized pump and distribution block. Chain lubrication intervals of 15 or 60 minutes can be selected depending on duty cycle and type of operation. The 1 quart (1 L) reservoir holds enough lubricant to keep the chains oiled for 40 to 120 hours of operation.
- Eight 1.50" (38 mm) diameter axles are contained in aluminum housings. Each axle is supported by two tapered roller bearings and sealed at each end. Lubrication is accomplished via oil bath within the axle housing.
- Strong R80 final drive chains are used to connect all eight axles to the output shafts of the CENTAURMATIC transmission.
- Fully floating, automatic chain adjusters allow the drive chain to freely float up and down based on chain tension. These long lasting, nylon slider blocks support the top and bottom of each chain.
- Easy access to engine compartment as well as improved serviceability for all critical components.

Proven Track Record

Since 1962, ODG has been an innovative manufacturer of gears and transmissions, amphibious extreme terrain vehicles, and rovers for future lunar exploration. ODG introduced the world famous amphibious ARGO in 1967 and has sold more than 50,000 vehicles around the globe.

Solid Investment

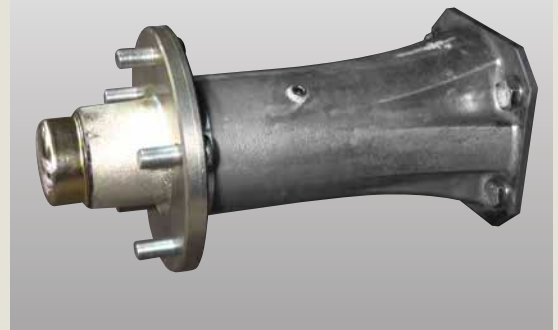
The all season capabilities of the ARGO 8x8 Centaur, in combination with a multipurpose rear cargo platform, provide optimized utilization resulting in fast, year round payback on investment. Proper operation and adherence to a scheduled maintenance program will ensure maximum uptime and usage for years to come.



Patented dual differential Centaurmatic transmission.



3" (76 mm) tubular frame, strong RC 80 chains with automatic, reversible chain adjusters.



High performance heavy duty axles.



Where we proudly build the ARGO...

SPECIFICATIONS

ENGINE

Engine	Turbo diesel, in-line 3 cylinder, 4 cycle
Model	Briggs & Stratton Daihatsu
Torque	58 lb. ft (78.6 Nm)
Horsepower ¹	34 hp (25.3 kW) @ governed 3800 rpm
Displacement	958 cc (58.46 cu. in.)
Cooling	Liquid cooled
Starting	Electric with glowplug for cold weather
Electrical	60 amp alternator

TRANSMISSION

Transmission	Dual differential transmission, HI, LOW, NEUTRAL and REV
Controls	Dash-mounted HI, LOW and REV gear selector with hand throttle and floor-mounted brake pedal
Clutch	Continuously variable belt driven torque converter (CVT)
Brakes	Hydraulically activated disc brakes

CONTROLS

Steering	Ergonomic steering yoke. Skid steered via Centaurmatic Transmission.
Park Brake	Ratcheting style mechanical park brake
Instrumentation	LCD Digital Gauge Cluster
Gauges	Speedometer, Odometer, Voltmeter, Hour Meter, Tachometer, Engine Coolant Temperature, Oil Pressure, Parking Brake Reminder, Preheat Timer
Warning Lights	Parking Brake Reminder Water in Fuel Indicator Check Engine Warning

CHASSIS

Frame	Powder coated, 3" (76 mm) tubular steel, lower body support pan, welded construction - FEA analyzed for strength and durability
Final Drive	R80 roller chains from transmission to eight 1.5" (38 mm) diameter axles. Automatically adjusting tensioner for each drive chain. Tapered roller bearings in an oil bath support each axle. Standard semi-automatic or optional automatic chain lubrication system.
Tires	HEAT AT190 25x12.00-9 NHS or High impact resistant 24" (610 mm) turf tires with reinforced rims (for track use only)
Body	Vacuum formed lower body and standard full skid plate formed from high molecular weight polyethylene (HMWPE).

CONVENIENCE

Electrical Output	12 V outlet
Battery	960 CCA battery



220 Bergey Court, New Hamburg
ON, Canada N3A 2J5
Toll Free: **1-877-274-6288**
Tel: (519) 662-4000
Fax: (519) 662-2421
www.argo.tv.com/products/centaur

- (1) Gross intermittent SAE J1349.
- (2) All speeds are approximate and depend on conditions.
- (3) Drawbar Pull rating based on ISO 7464-1983.
- (4) Towing capacity is approximate and depends on terrain, load on vehicle, incline and decline.
- (5) Fuel consumption depends on load and operating conditions.
- (6) Dimensions and weights are approximate and will vary depending on final build specification.

Some vehicle applications shown are for demonstration purposes, originating from third parties and not available from ARGO. In all cases vehicle load limits have been considered. For safety, always wear approved helmets and eye protection. Always remain seated while in the ARGO.
678-136 • Printed in Canada 6/2014

PERFORMANCE

Speed ²	25 mph (40 km/h)
Drawbar Pull ³	2,400 lb. (1090 kg)
Towing Capacity ⁴	2,200 lb. (1000 kg)
Load Capacity	2,000 lb. (907 kg)
Seating Capacity	Front bench seat for two persons
Fuel Capacity	12.6 U.S. gal. (48 litres) providing approx. 10 hours of operation ⁵
Operating Temperature	All weather, all terrain, -40°F to +104°F (-40°C to +40°C)

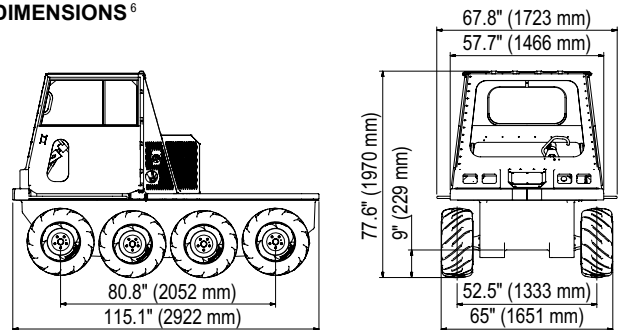
GROUND CLEARANCE & GROUND PRESSURE ⁴

Ground Clearance	9" (229 mm) @ centre of vehicle
Ground Pressure	As low as 5 psi (34 kPa) with tires
	2.2 psi (15 kPa) with 15" (381 mm) tracks
	1.27 psi (8 kPa) with 18" (457 mm) tracks
	1.0 psi (6.8 kPa) with 22" (559 mm) snow tracks

WEIGHT

	2,400 lb. (1,090 kg) base vehicle
Shipping Weight ⁶	2,720 lb. (1,234 kg) with multi-purpose tracks
	2,920 lb. (1,324 kg) with snow tracks
Transport	Truck, trailer or helicopter lift

DIMENSIONS ⁶



Dimension 'A'
 with 15" (381 mm) Rubber Tracks 72.5" (1841 mm)
 with 18" (471 mm) Rubber Tracks 75.5" (1917 mm)
 with 22" (559 mm) Snow Tracks 84.5" (2146 mm)

AVAILABLE ARGO 8X8 CENTAUR COLORS

Colors are reproduced with great care, but may vary slightly on actual vehicles.



Safety!
...always in Season!

treadlightly!
ON LAND AND WATER



Proud to be located in
Canada's
Technology
Triangle