

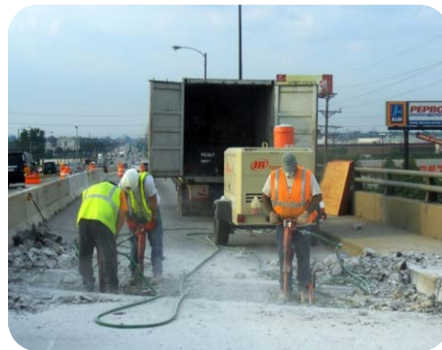


## We make infrastructure happen.

Gale Construction Company (GCC) capabilities include civil construction, demolition, shoreline stabilization, vehicular and pedestrian bridges, and retaining walls. Our personnel have extensive backgrounds in design-build, interior/exterior renovations, SCIFs, architectural, mechanical, electrical upgrades, labs, energy retrofits, modular, roofing, facade renovations, and life safety.

### Current and Past Projects:

Client	Project	Amount
USACE	Lock and Dam 21 Bull Nose Repair	\$2,000,000
USACE	Lockport Control Works Dam 2	\$1,427,000
USACE	T.J O'Brien L&D Electrical Bubbler Upgrade	\$1,400,000
USACE	T.J O'Brien L&D Material Supply and Support	\$1,300,000
Fortune 500	Norfolk Southern Railway Retaining Wall Rehabilitation	\$1,200,000
USACE	In Harbor CDF Equipment Storage Building	\$880,000
Waste Mgmt.	Landfill Maintenance	\$550,000
IDOT	Vehicular Bridge Removal and Replacement	\$496,148
IDOT	Vehicular Superstructure Repairs	\$494,357
USDA	Midewin Tallgrass Bison Trail Fencing	\$365,000
SP+	Snow Removal at Midway Airport, Chicago	\$200,000
USDA	Midewin Tallgrass Prairie Cattle Fence Installation	\$175,000
FAA	Perimeter Fence Removal and Replacement	\$78,000



### SBA BOS

Lolitha K. Mckinney  
312.353.5850  
Lolitha.mckinney@sba.gov

### BONDING CAPACITY

\$5M/project  
\$15M/aggregate

### PERSONNEL EXPERIENCE

USACE  
GSA  
NPS  
DOL  
USDA  
DOT-FAA  
NAVFAC

**CAGE CODE** 5A6N2

**DUNS NUMBER** 602999844

**EMR** 0.91

### IN-HOUSE RESOURCES

- Structural construction
- Retaining walls
- Pile driving
- Concrete boat ramps
- Shoreline stabilization
- Earth excavation
- Concrete forming and repair
- Steel erection
- Bridge installations
- Demolition
- Certified helical screw pile installation

### CONTACT

**Laura J. Pager, President**  
**815.722.4253**  
**lpager@galeconstructioncompany.com**

**Dean Hardman, Director of Business Development**  
**301.648.4429**  
**dhardman@boldconcepts.com**

PRINCIPAL OFFICE  
315 West McDonough Street  
Joliet, IL 60436  
[www.galeconstructioncompany.com](http://www.galeconstructioncompany.com)

OFFICES IN:  
Gaithersburg, Maryland  
Arcadia, Florida