



# **BRILLIANCE WAVE STRIP LIGHT**

## PRODUCT & INSTALLATION

### **GUIDE**

  
**BRILLIANCE LED**<sup>®</sup>  
A HIGHER LIGHT FORM<sup>®</sup>

# TABLE OF CONTENTS

<b>BRILLIANCE WAVE STRIP LIGHT</b> .....	<b>3</b>
<b>ACCESSORIES</b> .....	<b>4</b>
POWER FEED .....	4
END CAP .....	4
JUMPER CONNECTOR .....	4
MOUNTING PLATE .....	4
BRILLIANCE WAVE STRIP LIGHT CHANNEL - BENDABLE .....	4
BRILLIANCE WAVE STRIP LIGHT CHANNEL - STANDARD .....	4
<b>BEST PRACTICES: DO'S AND DON'TS</b> .....	<b>5</b>
CARRYING .....	.5
BENDING .....	.5
CUTTING .....	.5
END CAP CONNECTIONS .....	.5
POWER FEED CONNECTIONS .....	.5
<b>POWER FEED ASSEMBLY INSTRUCTIONS</b> .....	<b>8</b>
<b>END CAP ASSEMBLY INSTRUCTIONS</b> .....	<b>9</b>

# BRILLIANCE WAVE STRIP LIGHT



## DESCRIPTION

Brilliance Wave Strip Light is made specifically to flex left and right for indoor or outdoor applications with a radius and are perfect for fire pits, stairs, hardscaping, and overhangs. Just like our original strip light, the LEDs are encased in a UV protected material and can be incorporated to a new project or connected directly to an existing 8 to 16 VAC landscape lighting system. Dimmable with Brilliance Dimmer and most magnetic transformers. Reference this product and installation guide for assembly instructions and best practices.

## FEATURES

- Dimmable with most magnetic transformers
- Recommended max. length per power feed is 22 feet
- Available in 65.62 ft reels (20 meters)
- Enhanced ESD (Electro-Static Discharge) protection (IEC-61000-4-2)
- UL Certified E487030



**Scan QR Code to watch best practices video**

## STRIP LIGHT SPECS

<b>Wattage</b>	4.5 per meter
<b>Lumens</b>	30 per ft
<b>Kelvin Temperature</b>	2700
<b>Operating Range</b>	8-16 VAC/DC
<b>CRI</b>	80
<b>IP</b>	65
<b>Lamp Life (hours)</b>	35,000
<b>Warranty (years)</b>	3

NEC® Article 411.5 (B): Lighting systems shall be installed not less than 3m (10ft) horizontally from the nearest edge of the water, unless permitted by Article 680.

**INSTALLATION REQUIREMENTS:** Each Brilliance Wave Strip Light is quality control tested in the manufacturing process. Carefully follow the installation instructions to avoid mishandling, abuse, damage, misuse or negligence, as this voids the warranty.

# ACCESSORIES



**Power Feed**  
Part # BRI-WAVE-A-PF  
1 - Power Feed w/ Metal Cover  
1 - Metal Anti-Slip Plate



**Jumper Connector**  
Part # BRI-WAVE-A-JC  
1 - Jumper Connector  
2 - Metal Covers  
2 - Metal Anti-Slip Plates



**End Cap**  
Part # BRI-WAVE-A-EC  
1 - End Cap  
1 - Metal Anti-Slip Plate



**Mounting Plate**  
Part # BRI-WAVE-A-MP  
1 - Mounting Plate  
1 - Screw



**Brilliance Wave Strip Light Channel - Bendable**  
Part # BRI-WAVE-A-BC  
1 - Bendable Channel  
10 - Screws



**Brilliance Wave Strip Light Channel - Standard**  
Part # BRI-WAVE-A-SC  
1 - Standard Channel  
5 - Screws

# BEST PRACTICES: DO'S AND DON'TS



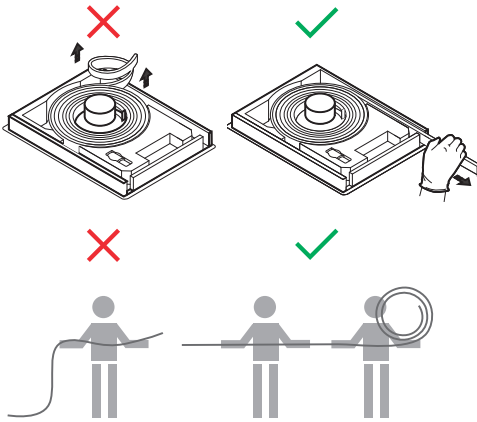
Failure to follow these instructions will void the warranty.

- Each Brilliance Wave Strip Light is quality-control tested to operate as intended.
- Carefully follow the Wave Strip Light installation instructions.
- Do not mishandle, abuse, damage, or misuse this product, as this voids the warranty.



Scan QR Code for video

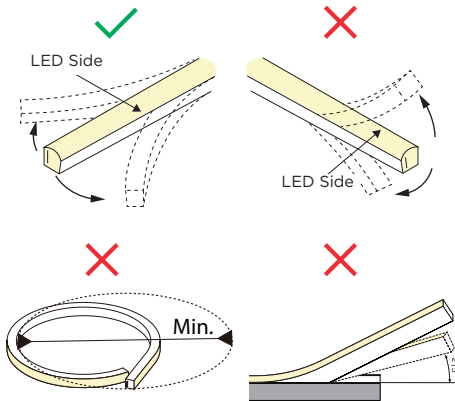
## A CARRYING



**DO:** Carefully remove from the box and coil the Wave Strip Light before transporting it to the installation location.

**DON'T:** Twist, bend, drag, carry over your shoulder, or transport in any manner other than in a coil. This can break contactors throughout the Wave Strip Light.

## B BENDING



**DO:** Bend the strip light horizontally.

**DON'T:** Bend the strip light any other direction, or exceed the minimum and maximum bending requirements.

## C CUTTING



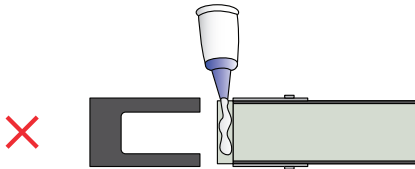
**DO:** Use a PVC cutting device to make clean, straight cuts on the cut lines.

**DON'T:** Use a utility knife, saw, or any other tool for cutting. These can create uneven or tilted edges, which can affect the connectivity and/or affect water ingress protection.

## D END CAP CONNECTIONS

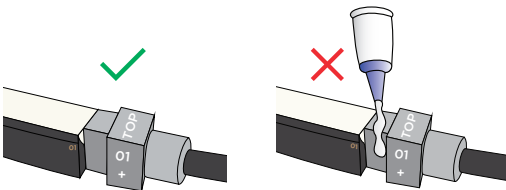


**DO:** Use the end cap provided with the Wave Strip Light. There is a gel insert that seals the connection in each end cap.



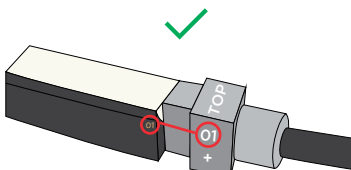
**DON'T:** Use silicone or any other sealant, lubricant, or adhesive on the cut ends. It will affect the Wave Strip Light's connectivity.

## E POWER FEED CONNECTIONS



**DO:** Use the Power Feed accessory with the Wave Strip Light. There is a gel insert that seals the connection in each power feed.

**DON'T:** Use silicone or any other sealant, lubricant, or adhesive on the cut ends. It will affect the Wave Strip Light's connectivity.



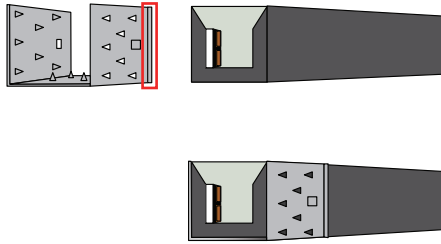
**NOTE:** Connect the Power Feed to the strip light using the 01 and TOP indicators for reference. Align the 01 on the Power Feed and the strip light. Align the TOP on the Power Feed with the LED side of the strip light.

# POWER FEED ASSEMBLY INSTRUCTIONS

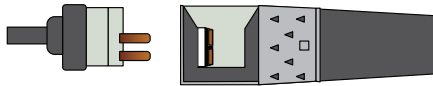


Failure to follow these instructions will void the warranty.

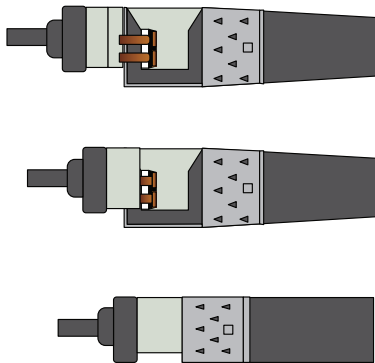
1. Place the metal anti-slip plate around the non-LED sides of the strip, with the ridge toward the middle of the strip.



2. Align the Connector Pins with the PCB opening, making sure that the gel will cover the remainder of the open side.



3. Insert the Connector Pins under the PCB Side (Copper).  
Do not insert the Connector Pins on the LED side.

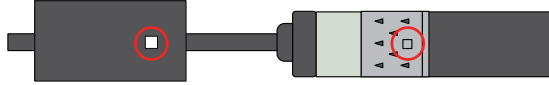


# POWER FEED ASSEMBLY INSTRUCTIONS

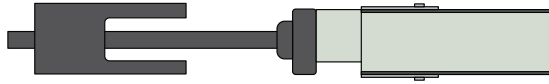
*Continued*

4. Align the Power Feed metal cover opening with the LED side of the strip light. The square side bumps should align with the side notches in the metal cover.

*Side View*

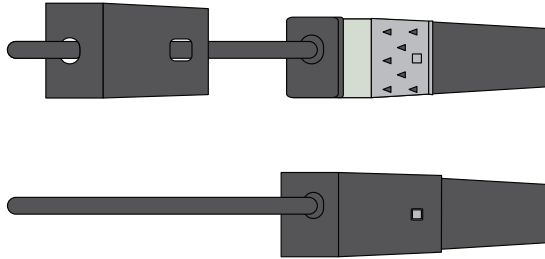


*Top View*

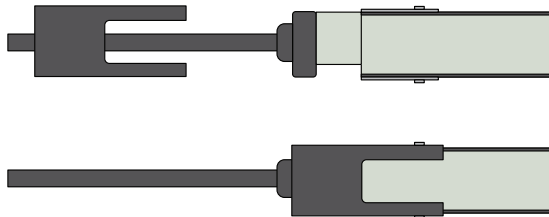


5. Slide the metal cover over the anti-slip plate until you hear a click sound. The Power Feed is connected.

*Side View*



*Top View*



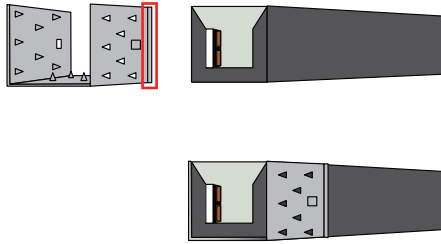


# END CAP ASSEMBLY INSTRUCTIONS



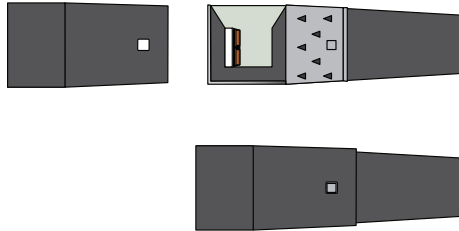
Failure to follow these instructions will void the warranty.

1. Place the metal anti-slip plate around the non-LED sides of the strip, with the ridge towards the middle of the strip

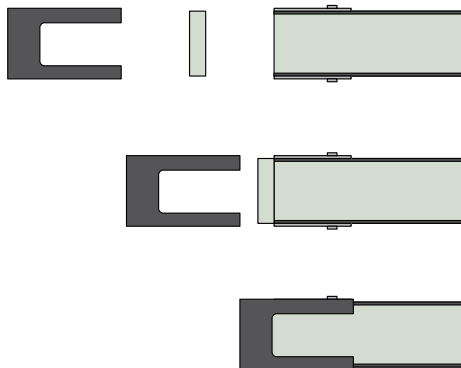


2. Align the End Cap metal cover opening with the LED side of the strip light. The side bumps should align with the side notches in the metal cover. Then slide the metal End Cap over the anti-slip plate until you hear a click sound. The End Cap is connected.

*Side View*



*Top View*





[brillianceled.com](http://brillianceled.com) | 800.867.2108  
7202 E Cave Creek Rd, Suite 3A  
PO Box 2281 Carefree, AZ 85377