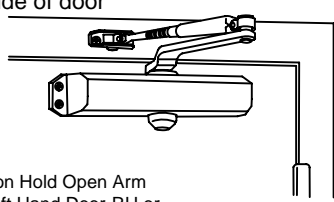
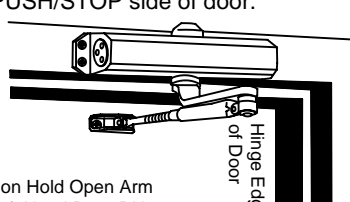
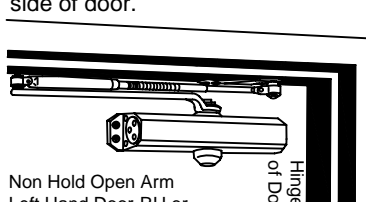


INSTALLATION APPLICATIONS

<p>Regular Arm installation Closer installs on PULL/HINGE side of door</p>  <p>Non Hold Open Arm Left Hand Door-RH or Right Hand Reverse -RHR See Page 2</p>	<p>Top Jamb Installation Closer Installs on Frame on PUSH/STOP side of door.</p>  <p>Non Hold Open Arm Left Hand Door-RH or Right Hand Reverse -RHR See Page 3</p>	<p>Parallel Arm Installation Closer installs on PUSH/STOP side of door.</p>  <p>Non Hold Open Arm Left Hand Door-RH or Right Hand Reverse -RHR See Page 4</p>
--	--	--

DOOR CLOSER ADJUSTMENT

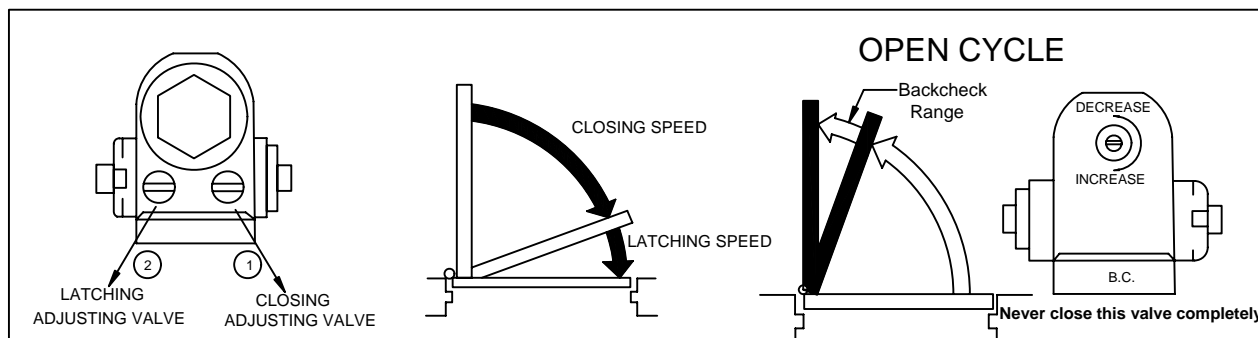
CLOSING CYCLE

NOTE: CLOSING arcs (CLOSE and LATCH) are controlled two (2) separate speed adjusting valves adjust the CLOSING speed first, then adjust the LATCHING speed.

- CLOSING speed adjustment is accomplished by full rotations of the speed adjusting valve.
 - Turn the speed adjustment valve CLOCKWISE for a SLOWER CLOSE arc closing speed.
 - Turn the speed adjustment valve COUNTER-CLOCKWISE for a FASTER CLOSER arc closing speed.
- LATCH speed adjustments is accomplished by full rotations of the speed adjusting valve.
 - Turn the speed adjustment screw CLOCKWISE for a SLOWER LATCHE arc closing speed.
 - Turn the speed adjustment screw COUNTER-CLOCKWISE for a FASTER LATCH arc closing speed.

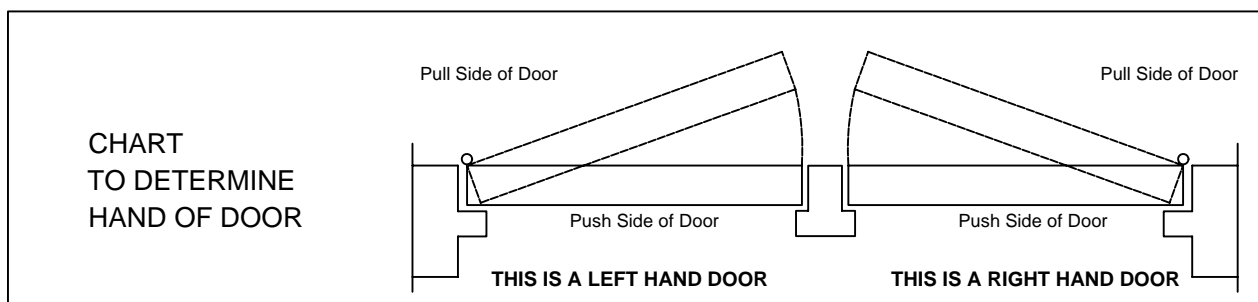
CAUTIONS!

Do not turn speed adjusting valve more than two (2) full turns counter-clockwise from its factory set position, as two speed adjusting valves could become dislodged from the door closer body, resulting in the loss of internal fluid and failure of the device.



These instructions apply to closers equipped with backcheck.
To increase backcheck intensity, turn valve marked "BC" clockwise.
To decrease backcheck intensity, turn valve marked BC counter-clockwise

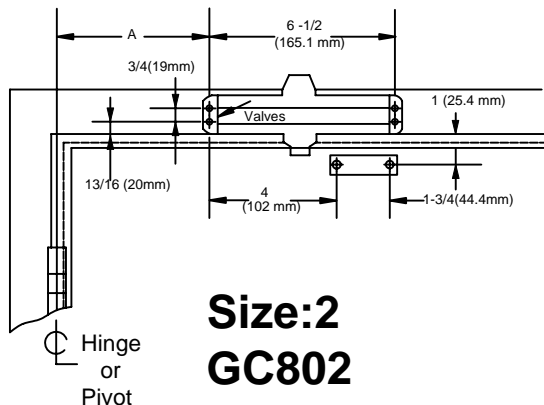
CHART TO DETERMINE HAND OF DOOR



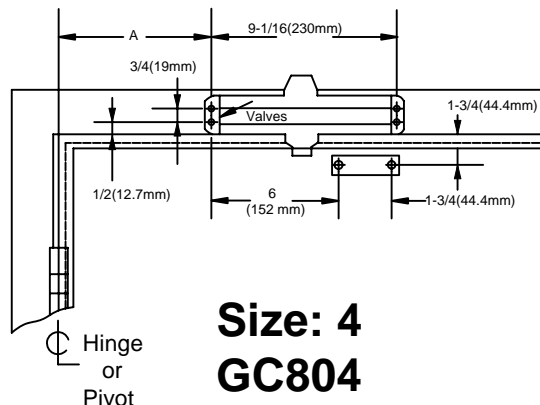
THIS IS A LEFT HAND DOOR **THIS IS A RIGHT HAND DOOR**

Installation Instructions for TOP JAMB (PUSH SIDE) Mounting

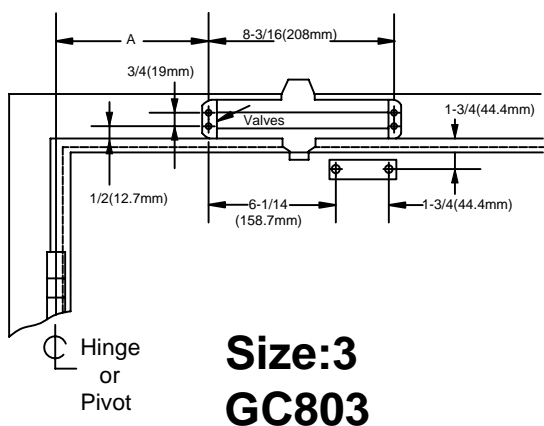
THIS TEMPLATE COVERS REGULAR ARM INSTALLATIONS TO 180° OPENING.



**Size:2
GC802**



**Size: 4
GC804**



**Size:3
GC803**

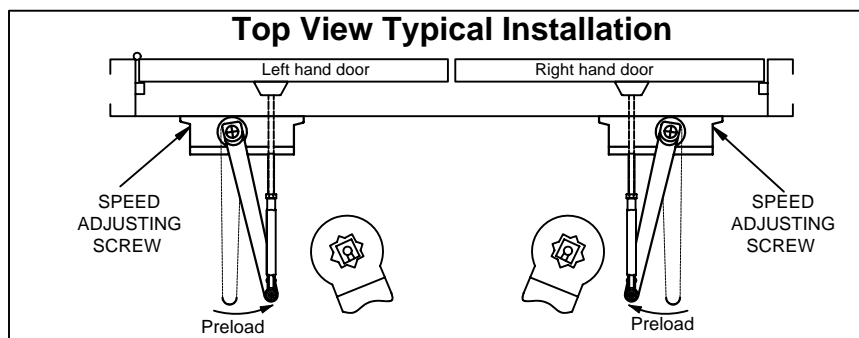
OPENING	DIM.A GC802, Size 2	
To 120°	6-3/16 (157mm)	
120°-180°	4-1/8 (105mm)	

OPENING	DIM.A GC803, Size 3	DIM.A GC804, Size 4
To 120°	6-1/2 (165.1mm)	6 (152 mm)
120°-180°	4 (101.6mm)	3-1/2 (89mm)

Left hand door shown
Right hand in opposite
Dimensions are in inches
Do not scale drawing

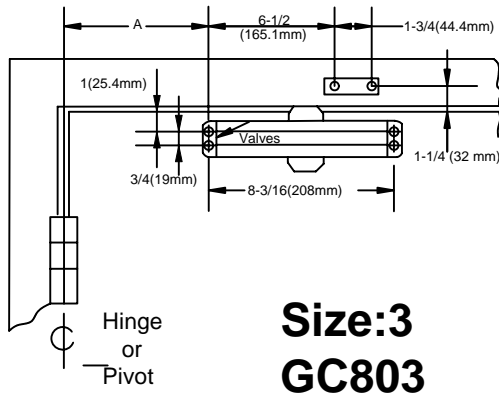
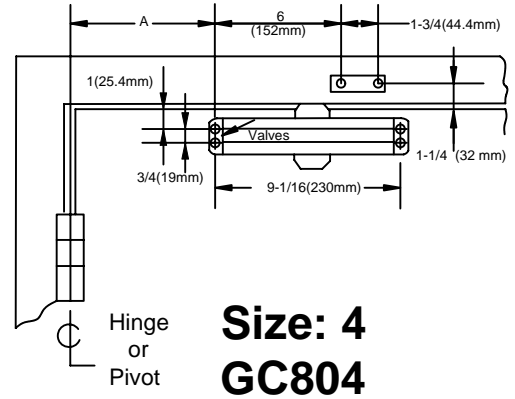
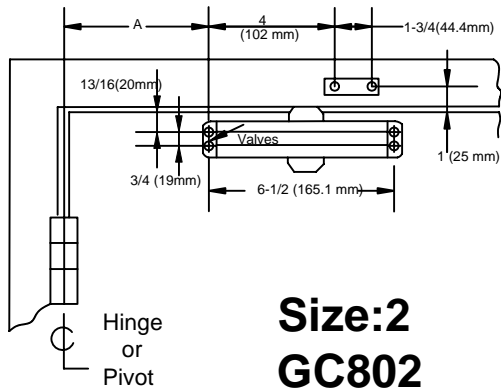
INSTALLATION INSTRUCTONS

1. Select door opening and use dimensions shown above, mark four (4) holes on door frame for body and two (2) holes on door leaf for arm shoe.
2. Drill pilot holes in door and frame for # 14 all-purpose screws or drill or tap for 1/4-20 machine screw.
3. Install forearm/arm shoe assembly to door using screws provided.
4. Mount closer on frame using screw provided. SPEED ADJUSTING VALVE MUST BE POSITIONED TOWARD HINGE EDGE.
5. Adjust length of the forearm to position forearm at right angle to the door leaf when connected to main arm at elbow. USE Washer and screw provided to secure pivot connection. Tighten locknut on forearm.
6. Snap pinion cap over shaft at bottom of closer.
7. Adjust closing speed of door. following instructions as shown page 1.



Installation Instructions for REGULAR ARM (PULL SIDE) Mounting

THIS TEMPLATE COVERS REGULAR ARM INSTALLATIONS TO 180° OPENING.



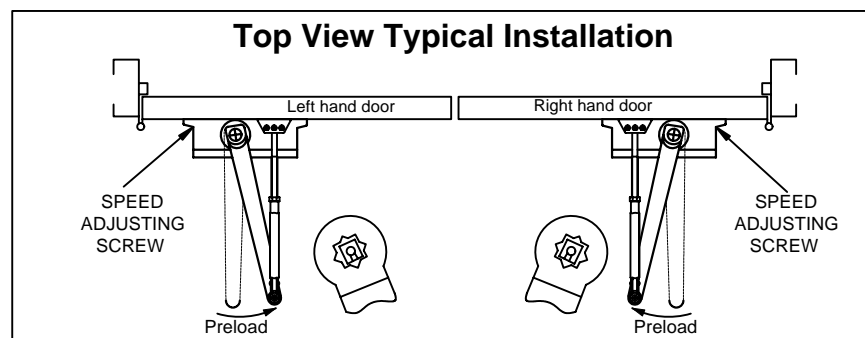
OPENING	DIM.A GC802, Size 2	
To 120°	6-3/16 (157mm)	
120°-180°	4-1/8 (105mm)	

OPENING	DIM.A GC803, Size 3	DIM.A GC804, Size 4
To 120°	6-1/2 (165.1mm)	6 (152 mm)
120°-180°	4 (101.6mm)	3-1/2 (89mm)

Right hand door shown
Left hand in opposite
Dimensions are in inches
Do not scale drawing

INSTALLATION INSTRUCTONS

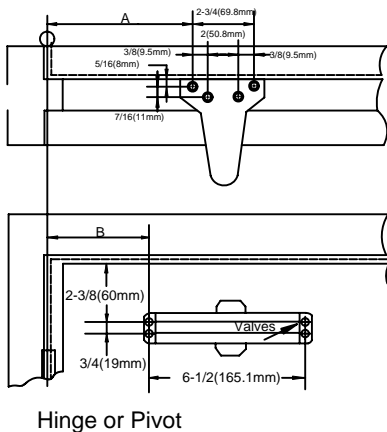
1. Select door opening and use dimensions shown above, mark four (4) holes on door leaf for body and two (2) holes on door frame for arm shoe.
2. Drill pilot holes in door and frame for # 14 all-purpose screws or drill or tap for 1/4-20 machine screw.
3. Install forearm/arm shoe assembly to door using screws provided.
4. Mount closer on frame using screw provided. SPEED ADJUSTING VALVE MUST BE POSITIONED TOWARD HINGE EDGE.
5. Adjust length of the forearm to position forearm at right angle to the door frame when connected to main arm at elbow. USE Washer and screw provided to secure pivot connection. Tighten locknut on forearm.
6. Snap pinion cap over shaft at bottom of closer.
7. Adjust closing speed of door. following instructions as shown page 1.



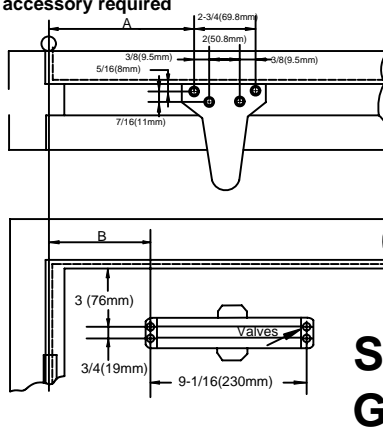
Installation Instructions for PARALLEL ARM (PUSH SIDE) Mounting

THIS TEMPLATE COVERS REGULAR ARM INSTALLATIONS TO 180° OPENING.

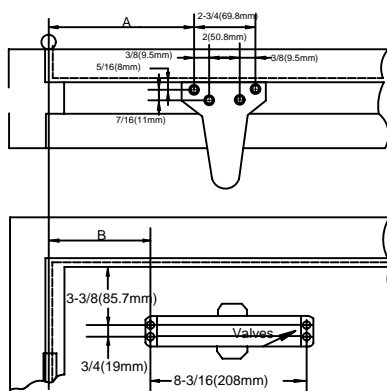
Parallel bracket accessory required



**Size:2
GC802**



**Size: 4
GC804**



**SIZE 3
GC803**

OPENING	DIM.A GC802, Size 2	DIM.B GC802, Size 2		
120°-180°	4-3/4(120mm)	3-1/2(90mm)		

OPENING	DIM.A GC803, Size 3	DIM.B GC803, Size 3	DIM.A GC804, Size 4	DIM.B GC804, Size 4
To120°	10-3/4(273mm)	7-13/16(198.4mm)	7-3/4(197mm)	6-1/8(156mm)
120°-180°	8-3/4(222.2mm)	5-5/8(142.9mm)	5-3/4(146mm)	4-1/8(105mm)

Left hand door shown
Right hand in opposite
Dimensions are in inches
Do not scale drawing

INSTALLATION INSTRUCTONS

1. Select door opening angle and use dimensions shown above, mark four (4) holes on door leaf for door closer and four(4) holes underside of door frame for parallel of bracket.
2. Drill pilot holes in door and frame to #14 all-purpose screws or drill and tap for 1/4-20 machine screws.
3. Mount closer on door using screws provided SPEED ADJUSTING VALVE MUST BE POSITIONED AWAY FROM HINGE EDGE
4. Install parallel Arm Bracket to frame using screws provided
5. Using a wrench on the square shaft at bottom of closer, rotate shaft approximately 45 angles toward hinge dege of door. Hold and place main arm of shaft on top of closer at proper index mark as illustrated
6. Remove arm shoe form fore arm and discard it. Install ROD and of forearm to bracket using screw/washer assembly provided.
7. Adjust lenth of adjustable forearm so that adjustable forearm is parallel to frame.

