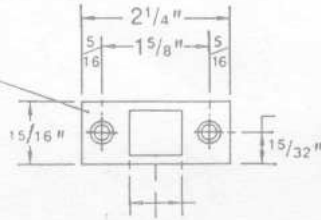


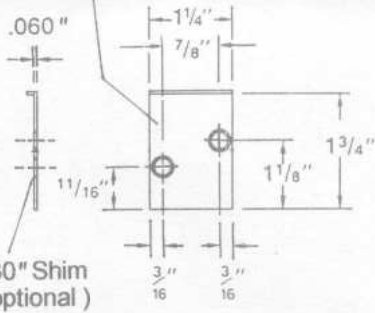
AUTOMATIC FLUSH BOLTS (FOR METAL DOORS APPLICATION)

Frame & Sill Strike
2 each #8 x 3/4" AB



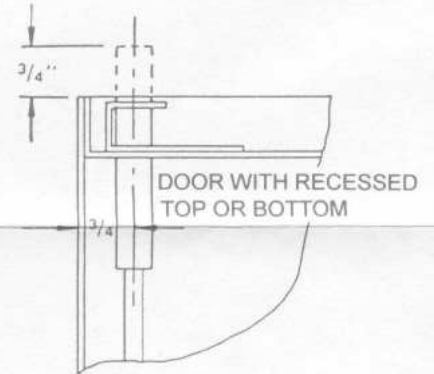
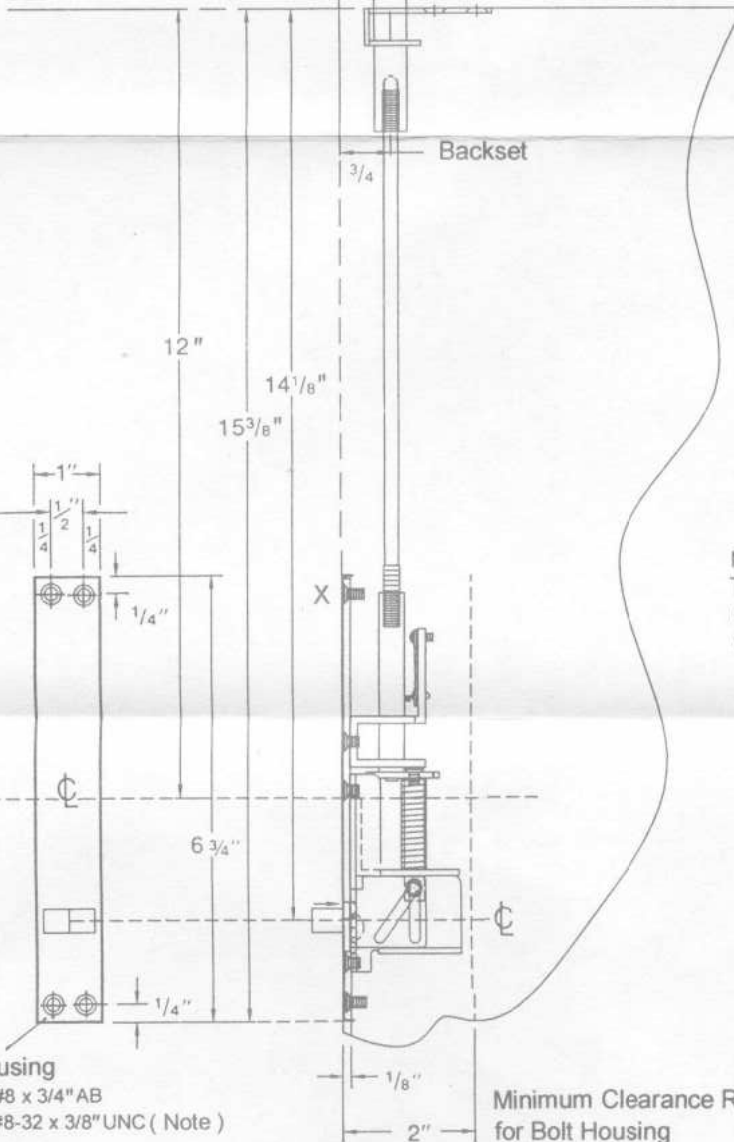
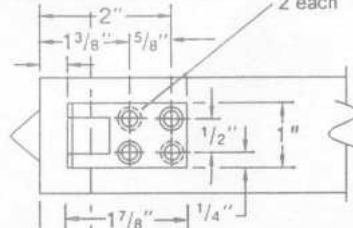
DIMENSIONS SHOWN ON THIS TEMPLATE ARE FOR TOP FLUSH BOLTS. FOR BOTTOM BOLTS INVERT AND MEASURE FROM EDGE OF DOOR.

Active Door Strike
2 each #8 x 3/4" AB



0.30" Shim (optional)

Reversible Top & Bottom Bolt Hd. Guide
2 each #8 x 3/4" AB



Note :
The short screws are seated into the holes of bolt housing as shown mark X, where faces the Bolt Extension Rod.

Bolt Housing
2 each #8 x 3/4" AB
2 each #8-32 x 3/8" UNC (Note)

Minimum Clearance Required for Bolt Housing

SCREW DETAILS: #8-32 x 3/8" UNC - flat countersunk head machine screw, total 2 pcs.
#8 x 3/4" AB - undercut flat countersunk head, dual purpose machine/tapping screw, total 8 pcs.