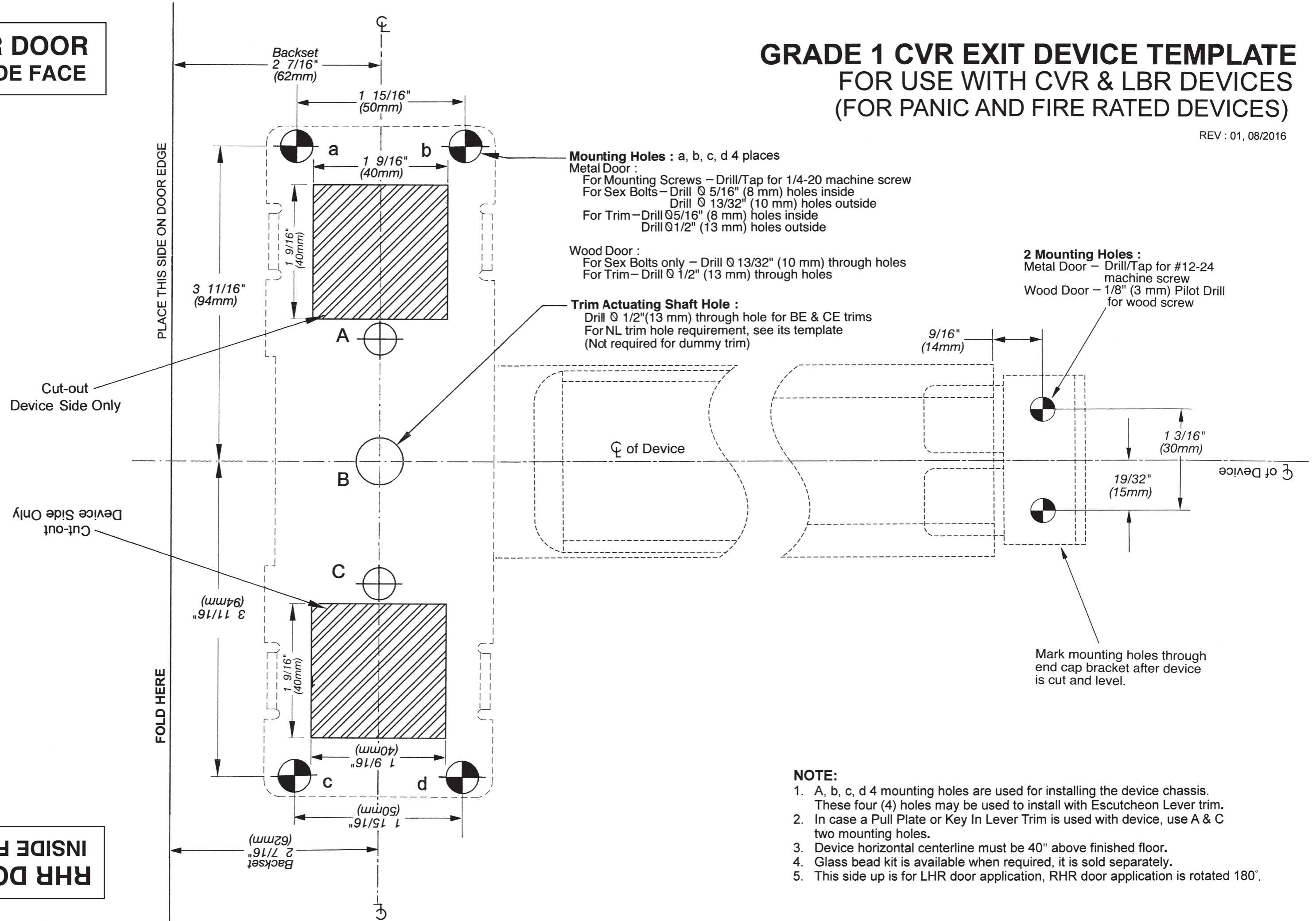


**LHR DOOR  
INSIDE FACE**

# GRADE 1 CVR EXIT DEVICE TEMPLATE FOR USE WITH CVR & LBR DEVICES (FOR PANIC AND FIRE RATED DEVICES)

REV : 01, 08/2016



**RHR DOOR  
INSIDE FACE**

PLACE THIS SIDE ON DOOR EDGE

FOLD HERE

Cut-out  
Device Side Only

Cut-out  
Device Side Only

3 11/16" (94mm)

Backset  
2 7/16" (62mm)

A

B

C

c

d

1 15/16" (50mm)

2 7/16" (62mm)

ϕ

**Trim Actuating Shaft Hole :**  
 Drill Ø 1/2" (13 mm) through hole for BE & CE trims  
 For NL trim hole requirement, see its template  
 (Not required for dummy trim)

ϕ of Device

ϕ of Device

# TOP DOOR FRAME

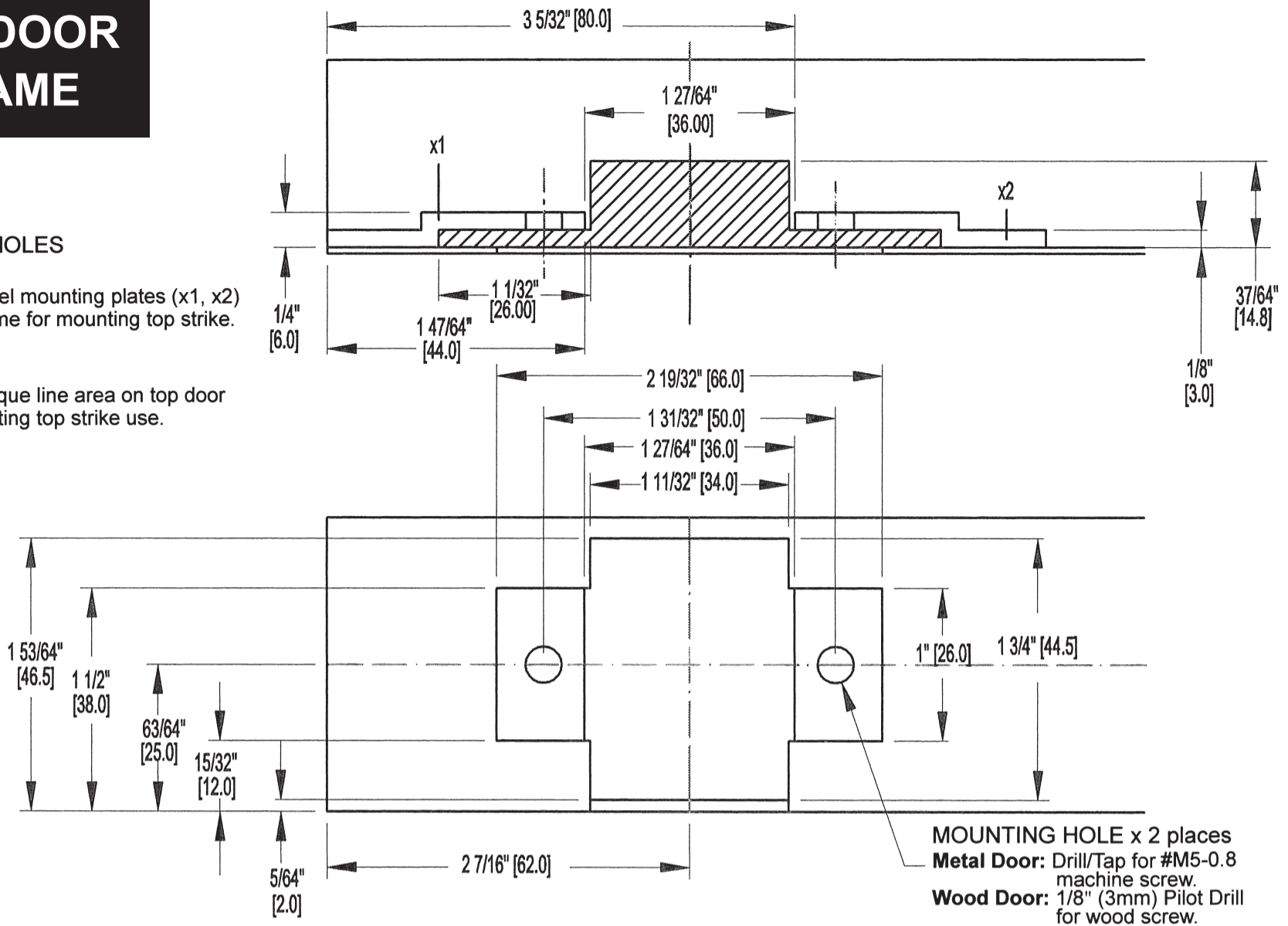
## MOUNTING HOLES

### Metal Door:

To weld two steel mounting plates (x1, x2) on top door frame for mounting top strike use.

### Wood Door:

Cut out the oblique line area on top door frame for mounting top strike use.



# TOP EDGE OF DOOR

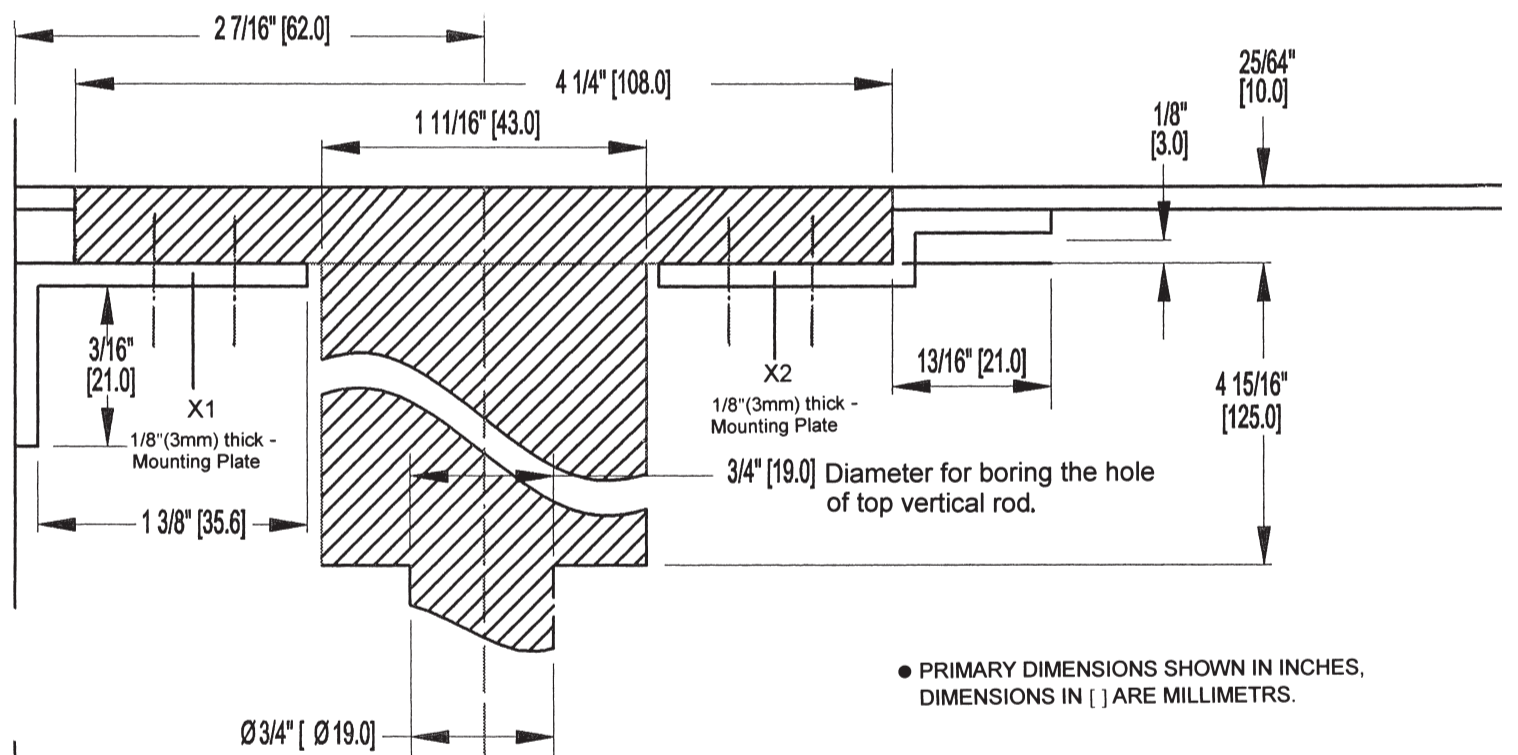
## MOUNTING HOLES

### Metal Door:

To weld two steel mounting plates (X1, X2) on top edge of door for mounting top latch assembly use.

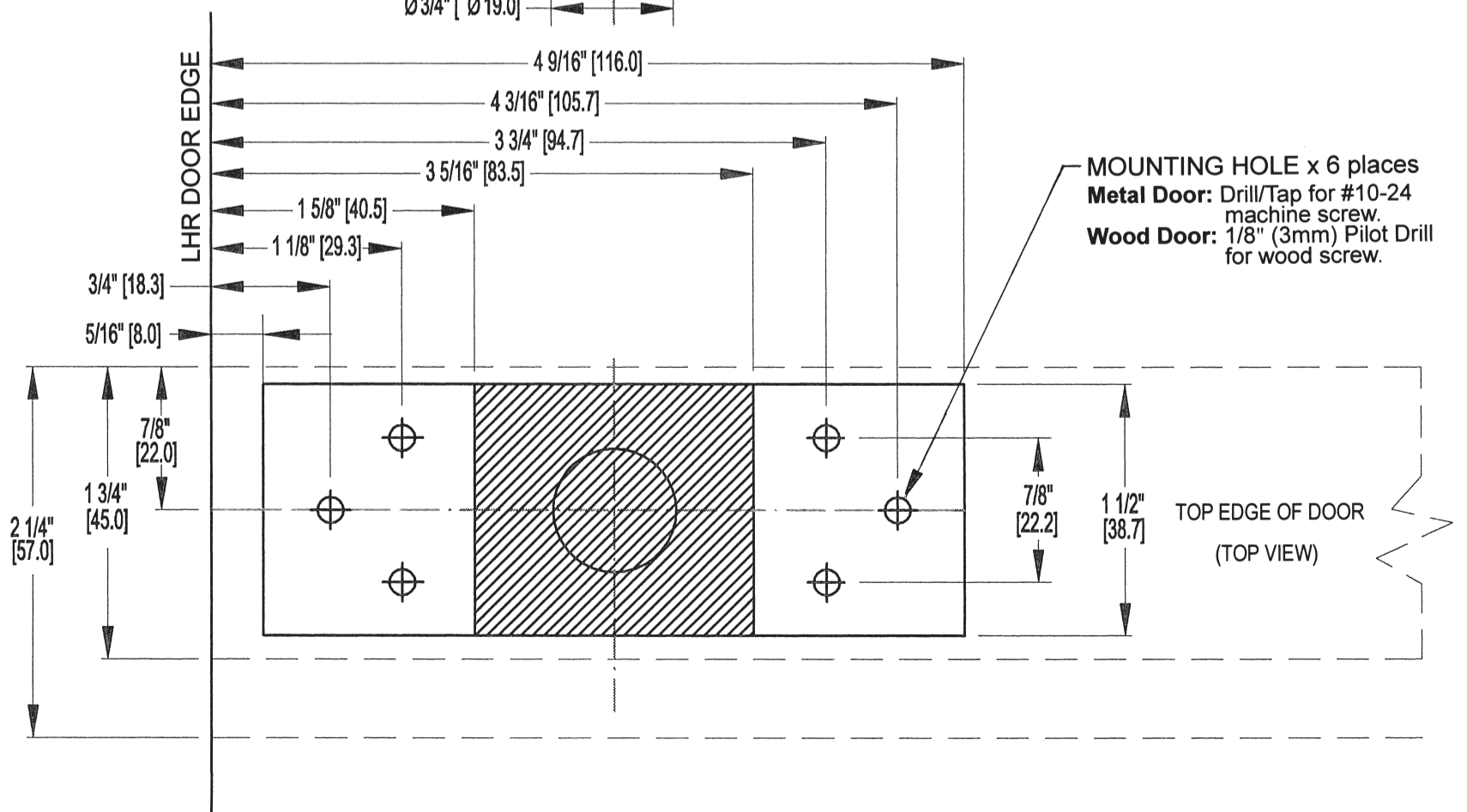
### Wood Door:

Cut out and bore the oblique line area on top edge of door for mounting top latch assembly use.

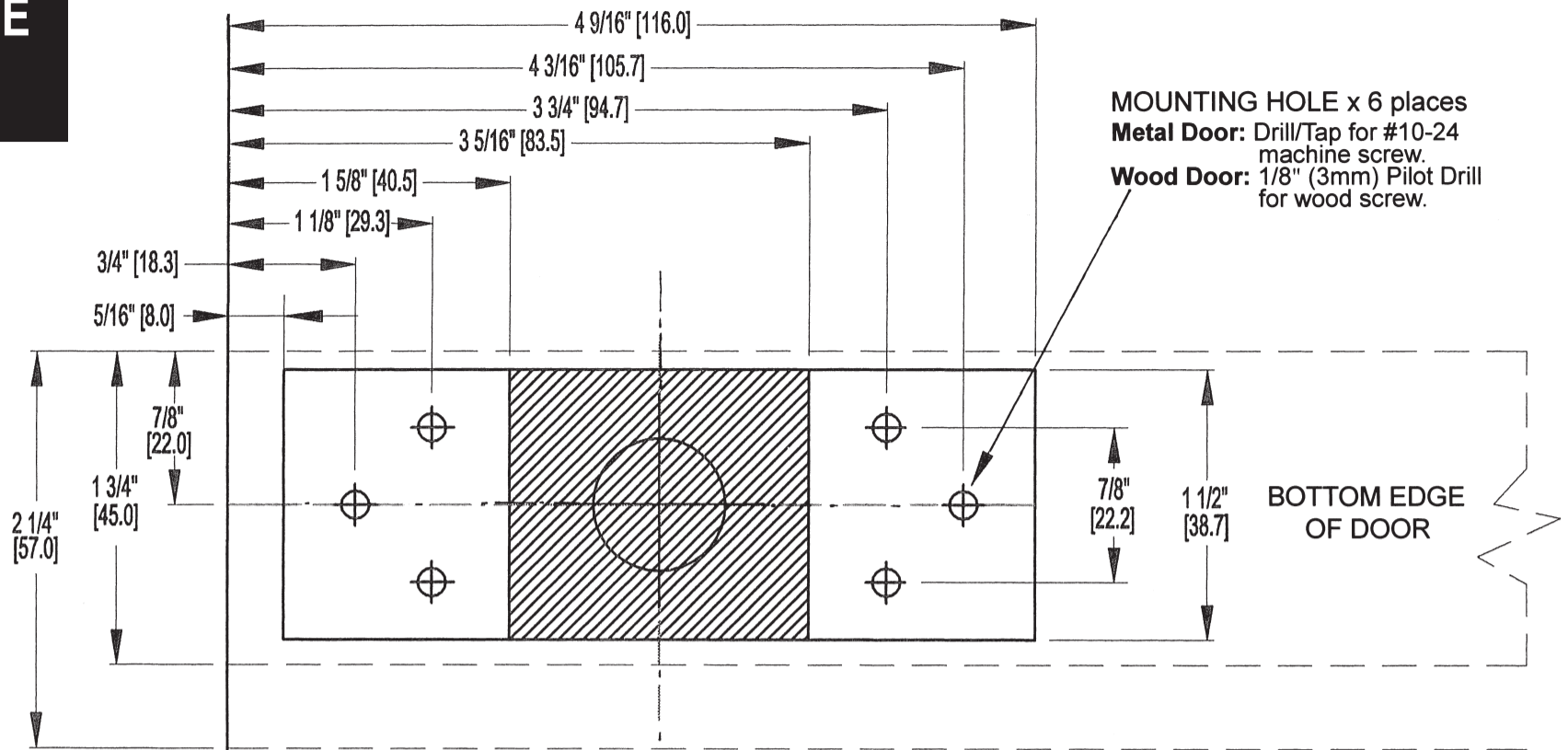


● PRIMARY DIMENSIONS SHOWN IN INCHES, DIMENSIONS IN [ ] ARE MILLIMETERS.

For RHR door use, invert this template.



# BOTTOM EDGE OF DOOR



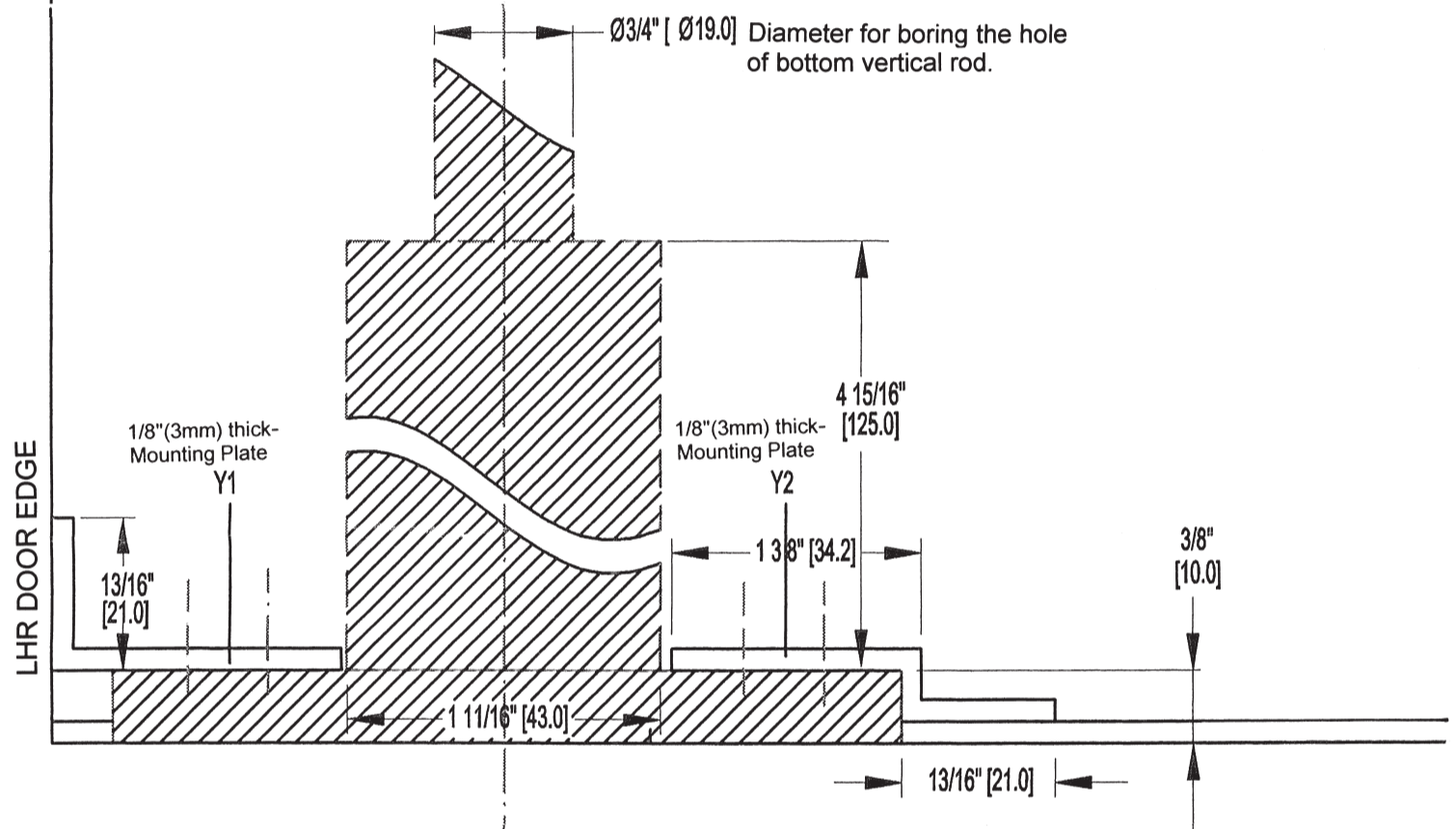
## MOUNTING HOLES

### Metal Door:

To weld two steel mounting plates (Y1, Y2) on bottom edge of door for mounting bottom latch assembly use.

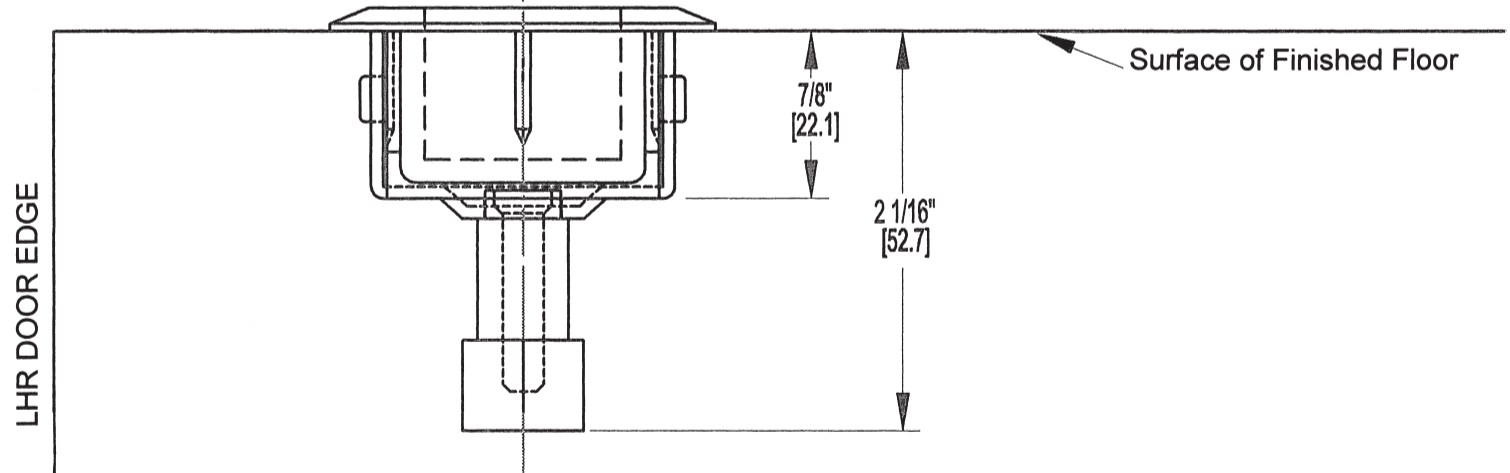
### Wood Door:

Cut out and bore the oblique line area on bottom edge of door for mounting bottom latch assembly use.

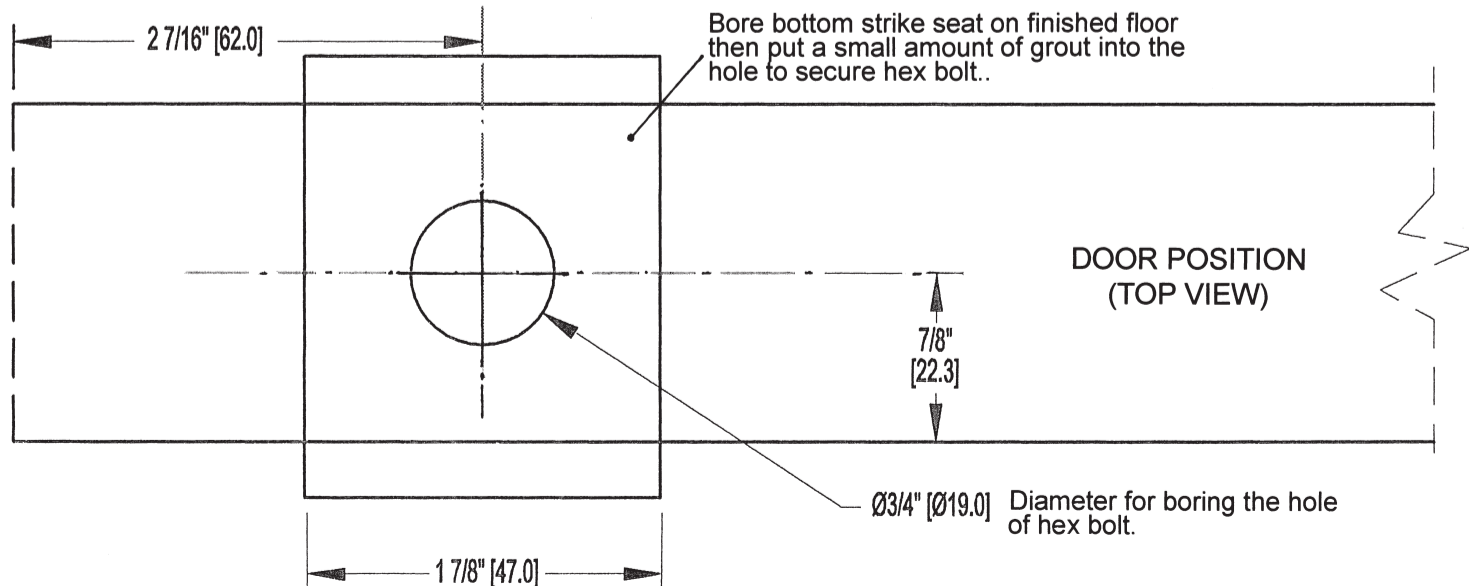


● PRIMARY DIMENSIONS SHOWN IN INCHES, DIMENSIONS IN [ ] ARE MILLIMETERS.

# FINISHED FLOOR



For RHR door use, invert this template.



## Concealed Vertical Rod Device Mounting Figures

