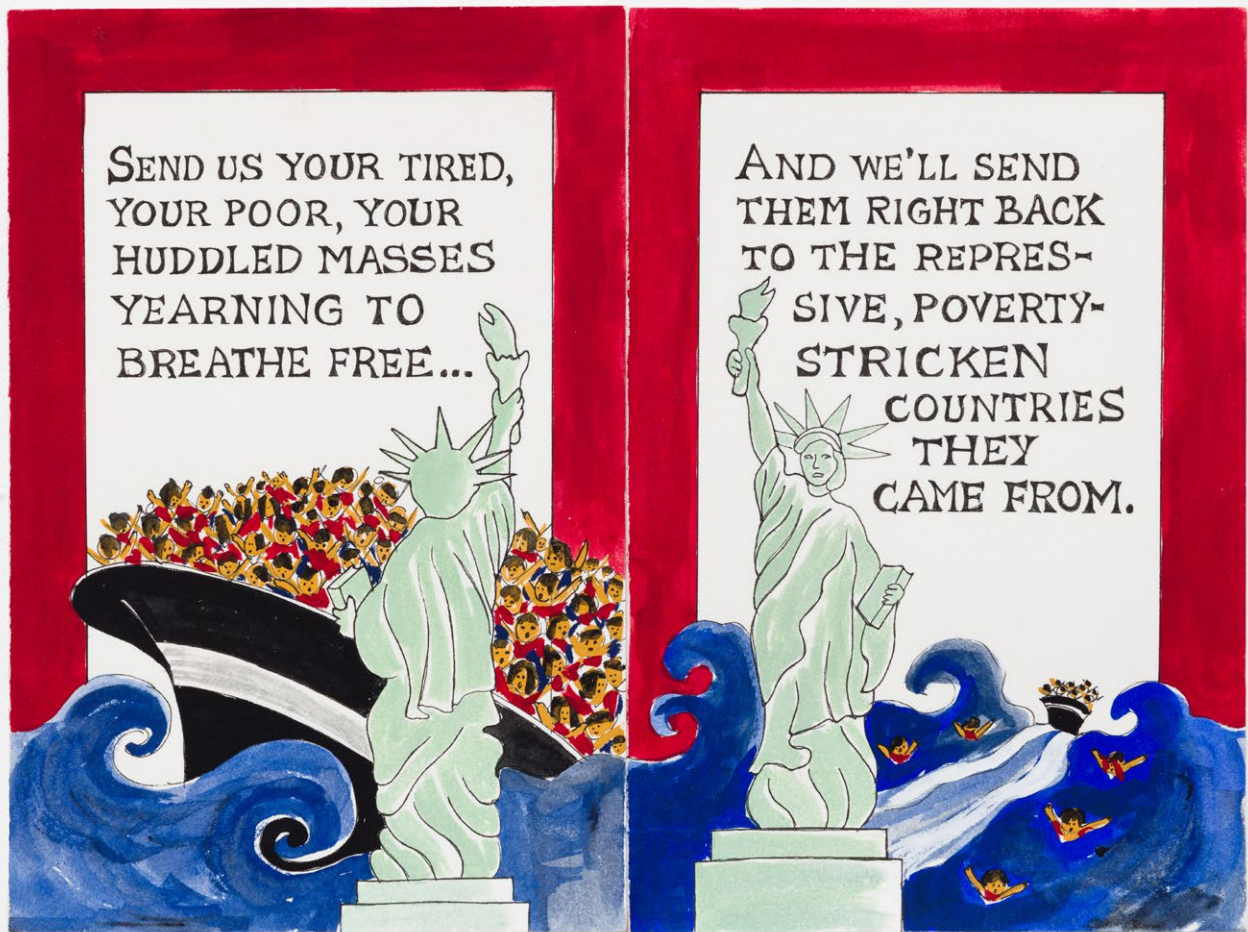


ERIKA ROTHENBERG
HOUSE OF CARDS



ERIKA ROTHENBERG

HOUSE OF CARDS

Charlie James Gallery is proud to present Los Angeles-based artist Erika Rothenberg in her first solo show with the gallery. In House of Cards, Rothenberg reinstalls her 1992 Museum of Modern Art New York exhibition of ninety satirical greeting cards. House of Cards premiered at MoMA right before a presidential election, and here it is again, right before another. First time this work will be exhibited in LA!

Rothenberg has been creating satirical greeting cards since 1991 that address what she describes as “every awful, ignorant thing we do to one another.” Like a traditional Hallmark store, the greeting cards in this exhibition are arranged in sections – except Rothenberg’s cards tackle themes like politics, the economy, racism, religion, etc., and push the envelope of acceptability and taste. Also included in the exhibition will be new cards, with themes such as misogyny vs feminism, that meld into the older cards with ease – perhaps a statement on how little we have progressed as a society since the original installation.

ERIKA ROTHENBERG makes art that takes many forms—painting, sculpture, photography, etc.—and frequently uses words as well as images. Her work has been widely exhibited at galleries and museums including the Museum of Modern Art, New York, the Los Angeles County Museum of Art, the Museum of Contemporary Art, Los Angeles, the Museum of Contemporary Art, Chicago, and Documenta IX in Kassel, Germany, and is in many private and public collections, including the museums cited above. Rothenberg has completed several large-scale public art projects, including The Road to Hollywood in Hollywood, California, and Freedom of Expression National Monument (with architect Laurie Hawkinson and performance artist John Malpede) in New York City.

Rothenberg was born in New York City and lives in Los Angeles. She attended the University of Chicago, but was kicked out for participating in a student protest. At 21, years before becoming a fulltime artist, she was the first woman art director at the ad agency McCann-Erickson in New York.

ERIKA ROTHENBERG
HOUSE OF CARDS - 1992



ERIKA ROTHENBERG
HOUSE OF CARDS - 1992

POLITICS



You're a Liar, Gouache and ink on paper, 8 x 10.75 inches, 1992



Penis, Gouache and ink on paper, 8 x 11 inches, 1992



A Few Things I Won't Need, Gouache and ink on paper, 8 x 11 inches, 1992



Biggest Ears, Gouache and ink on paper, 8 x 11 inches, 1992

ERIKA ROTHENBERG
HOUSE OF CARDS - 1992

POLITICS



Even Your Mother Won't Vote For You, Gouache and ink on paper, 8 x 11 inches, 1992



Mazel Tov, Gouache and ink on paper, 6 x 12.25 inches, 1992



Solve the Problems, Gouache and ink on paper, 8 x 11 inches, 1992



Blame Congress, Gouache and ink on paper, 8 x 11 inches, 1992

ERIKA ROTHENBERG
HOUSE OF CARDS - 1992

THE ECONOMY



Unemployed, Gouache and ink on paper, 8 x 11 inches, 1992



#1 Job Opportunity, Gouache and ink on paper, 9 x 12 inches, 1992



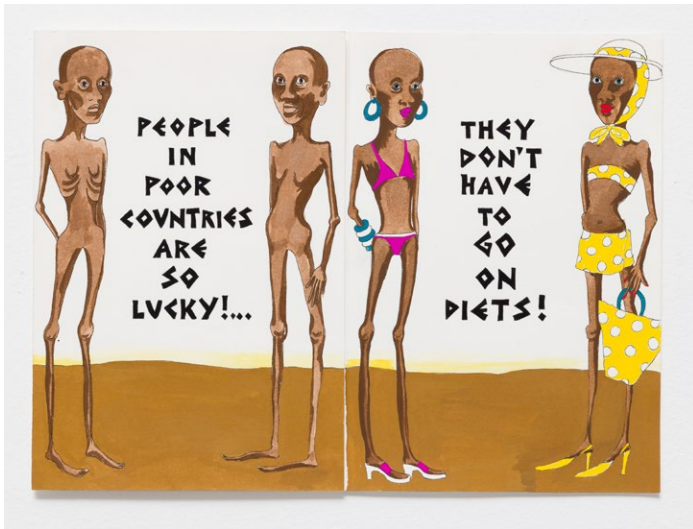
Executive Pay Cut, Gouache and ink on paper, 7.5 x 20 inches, 1992



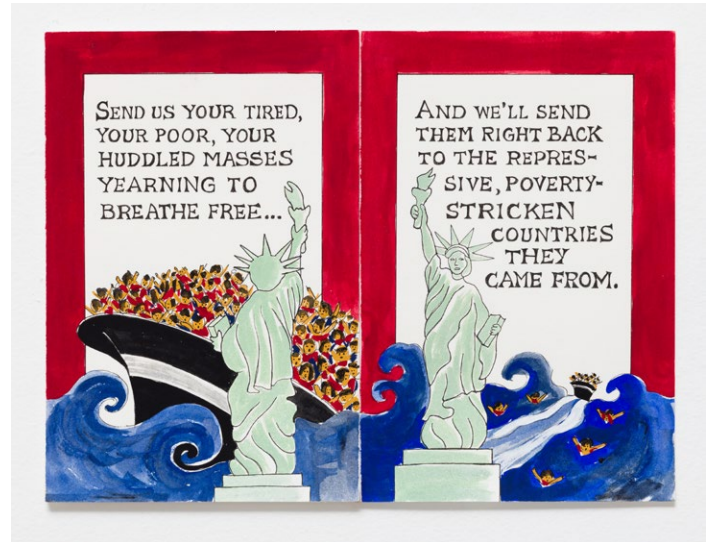
Buy, Spend..., Gouache and ink on paper, 10 x 14.5 inches, 1992

ERIKA ROTHENBERG
HOUSE OF CARDS - 1992

FOREIGN AFFAIRS



Diets, Gouache and ink on paper, 9.5 x 13 inches, 1992



Send Us Your Tired, Gouache and ink on paper, 9 x 12 inches, 1992



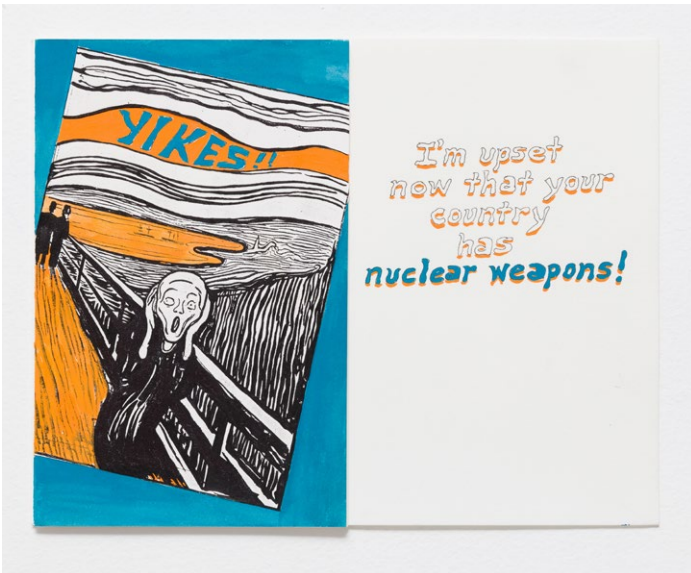
CIA, Gouache and ink on paper, 8.5 x 11 inches, 1992



If You Work Hard, Gouache and ink on paper, 9 x 12 inches, 1992

ERIKA ROTHENBERG
HOUSE OF CARDS - 1992

FOREIGN AFFAIRS



Yikes, Gouache and ink on paper, 8.5 x 11 inches, 1992



Surprise, Gouache and ink on paper, 11.25 x 10 inches, 1992



Suicide Bomber, Gouache and ink on paper, 7 x 11 inches, 1992

ERIKA ROTHENBERG
HOUSE OF CARDS - 1992

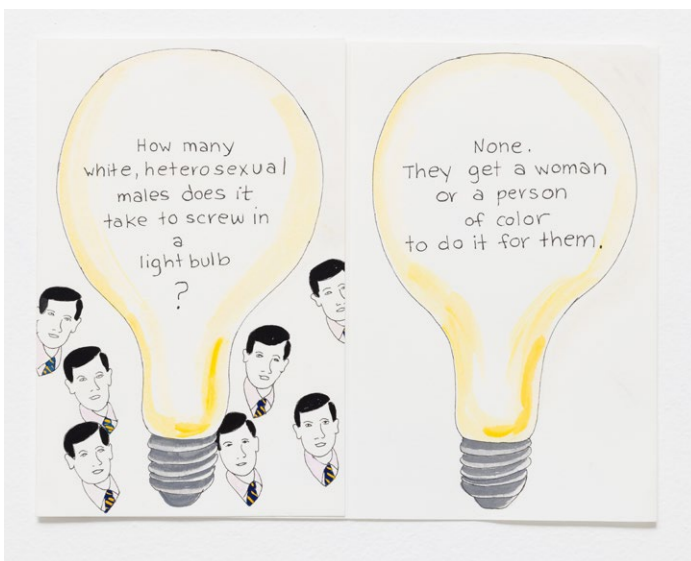
RACISM



It's So Unfair, Gouache and ink on paper, 8.5 x 11.25 inches, 1992



Welcome to our Neighborhood, Gouache and ink on paper, 8.5 x 12 inches, 1992



Lightbulb, Gouache and ink on paper, 8.5 x 11 inches, 1992



Victim of Discrimination Gouache and ink on paper, 9.5 x 13 inches, 1992

ERIKA ROTHENBERG
HOUSE OF CARDS - 1992

RACISM



Graveyard, Gouache and ink on paper, 9.5 x 13.25 inches, 1992

CIVIL RIGHTS



American Protest Kit, Gouache and ink on paper, 9.75 x 13 inches, 1992



Affirmative Action, Gouache and ink on paper, 8 x 11 inches, 1992

ERIKA ROTHENBERG
HOUSE OF CARDS - 1992

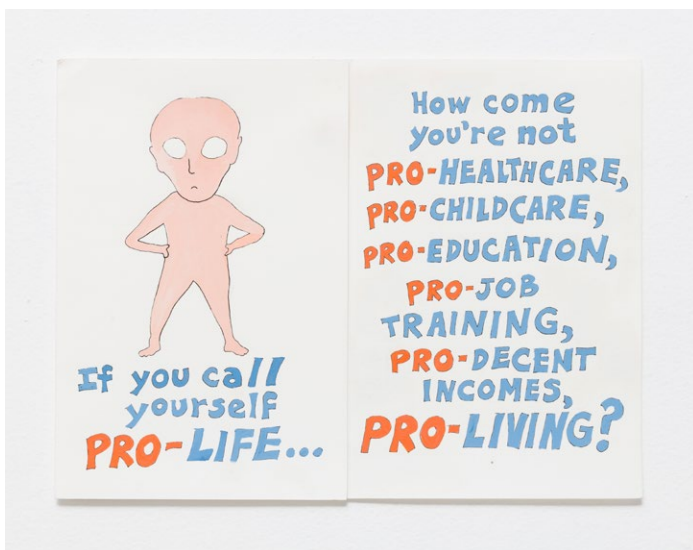
ABORTION



Don't Go Alone, Gouache and ink on paper, 8.5 x 11 inches, 1992



Note from Fetus, Gouache and ink on paper, 8.5 x 11 inches, 1992



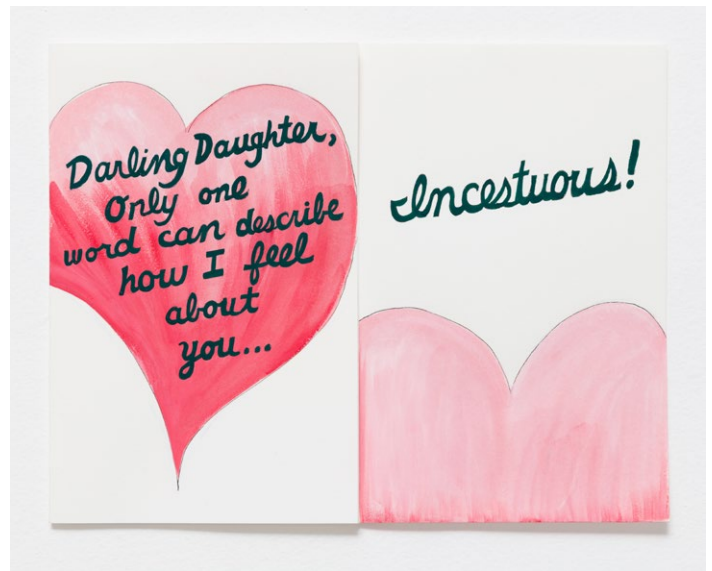
You Call Yourself Pro-Life, Gouache and ink on paper, 9 x 12 inches, 1992

ERIKA ROTHENBERG
HOUSE OF CARDS - 1992

SEXUAL ABUSE



It Was My Fault, Gouache and ink on paper, 8.5 x 11 inches, 1992



Incestuous, Gouache and ink on paper, 8.5 x 11 inches, 1992



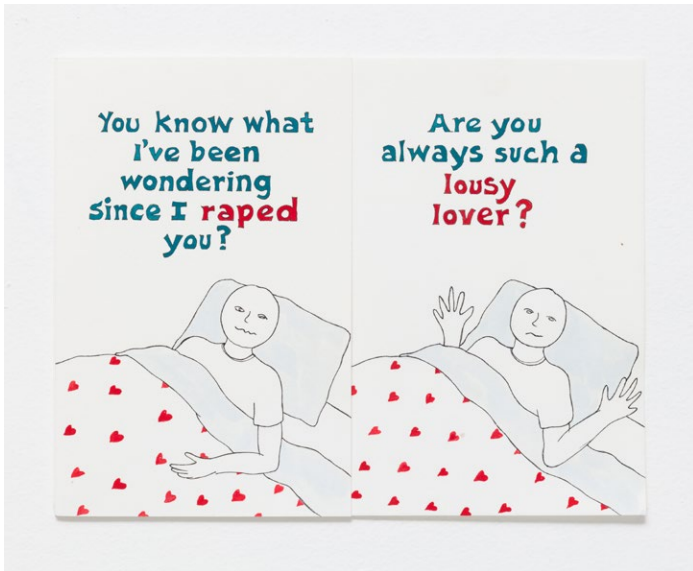
Hey Boss, Gouache and ink on paper, 9 x 12 inches, 1992



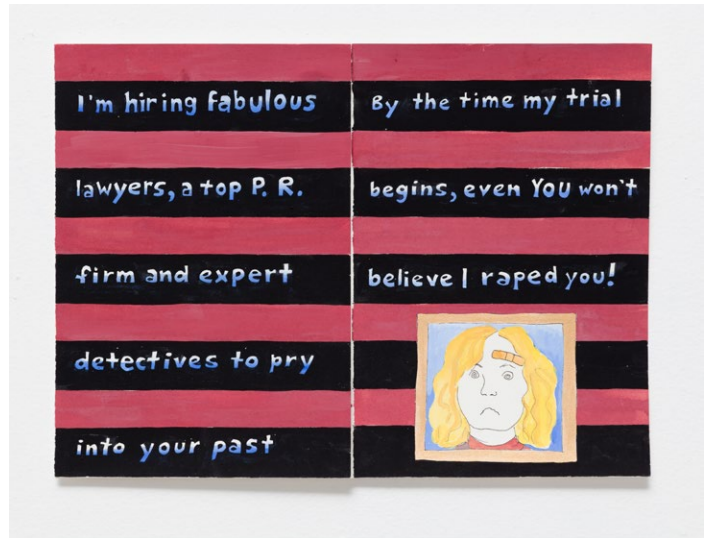
Thought No Meant Yes, Gouache and ink on paper, 9 x 12 inches, 1992

ERIKA ROTHENBERG
HOUSE OF CARDS - 1992

SEXUAL ABUSE



Lousy Lover, Gouache and ink on paper, 8.5 x 11 inches, 1992



No One Will Believe I Raped You, Gouache and ink on paper, 9 x 12 inches, 1992



Someone Famous, Gouache and ink on paper, 9 x 12 inches, 1992



If You Tell, I'll Kill You, Gouache and ink on paper, 7.5 x 10.5 inches, 1992

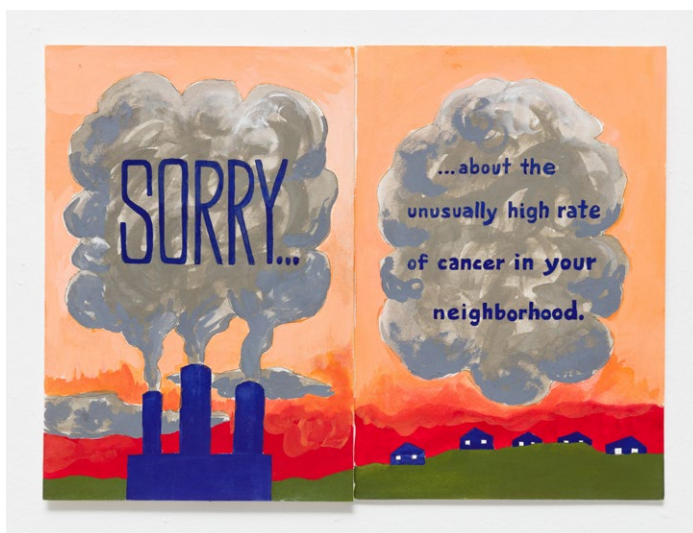
ERIKA ROTHENBERG
HOUSE OF CARDS - 1992

SEXUAL ABUSE

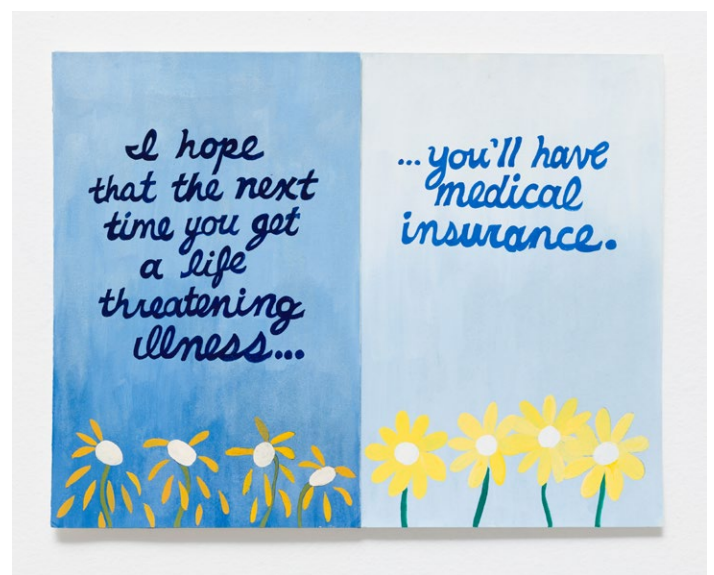


Hope You Get Over It Soon, Gouache and ink on paper, 9.5 x 13 inches, 1992

HEALTH EDUCATION AND WELFARE



Cancer in Your Neighborhood, Gouache and ink on paper, 9.5 x 13 inches, 1992



Medical Insurance, Gouache and ink on paper, 8.5 x 11 inches, 1992

ERIKA ROTHENBERG
HOUSE OF CARDS - 1992

HEALTH EDUCATION AND WELFARE



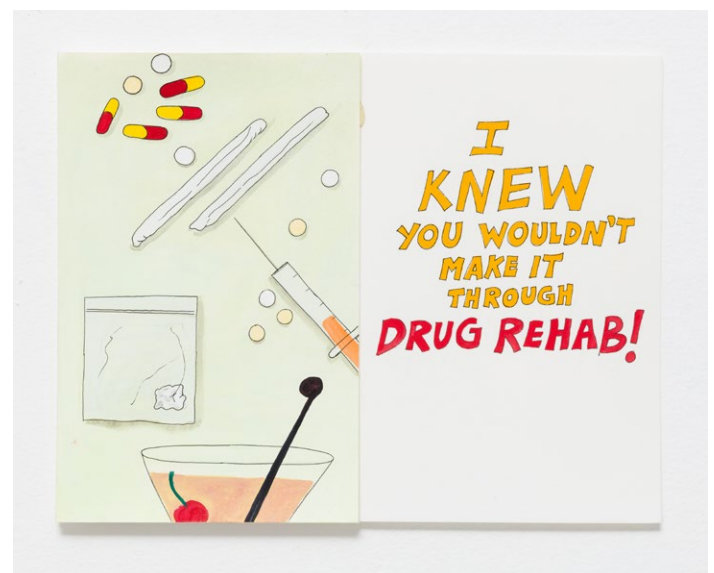
Bulletproof Vest, Gouache and ink on paper, 8.5 x 11 inches, 1992



Publik School, Gouache and ink on paper, 8.5 x 11 inches, 1992



Homeless, Gouache and ink on paper, 8.5 x 11 inches, 1992



Drug Rehab, Gouache and ink on paper, 8.5 x 11 inches, 1992

ERIKA ROTHENBERG
HOUSE OF CARDS - 1992

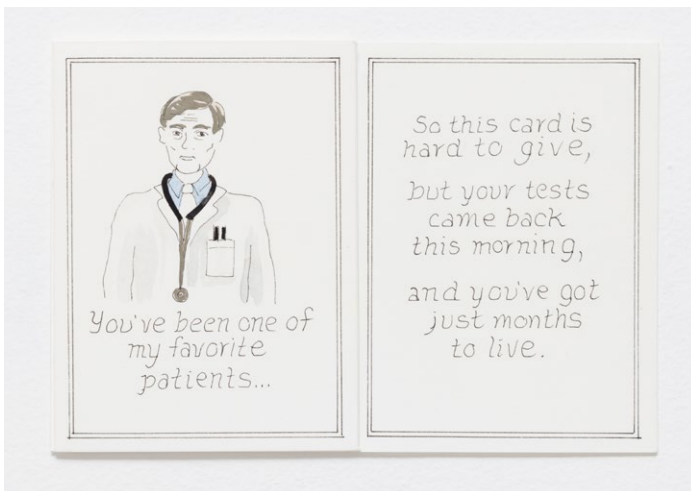
HEALTH EDUCATION AND WELFARE



Welfare, Gouache and ink on paper, 9 x 12 inches, 1992



Suicide, Gouache and ink on paper, 11 x 11.5 inches, 1992



Months to Live, Gouache and ink on paper, 6 x 8.5 inches, 1992



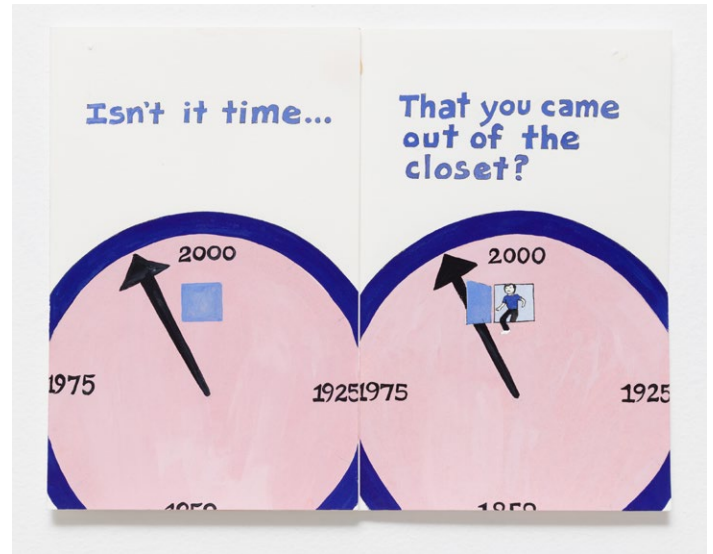
Get Well or I'll Kill You, Gouache and ink on paper, 8.5 x 11 inches, 1992

ERIKA ROTHENBERG
HOUSE OF CARDS - 1992

LIFESTYLE



Depressed, Gouache and ink on paper, 8.5 x 11 inches, 1992



Closet, Gouache and ink on paper, 8.5 x 11 inches, 1992



Multiple Personalities, Gouache and ink on paper, 7.75 x 10.5 inches, 1992



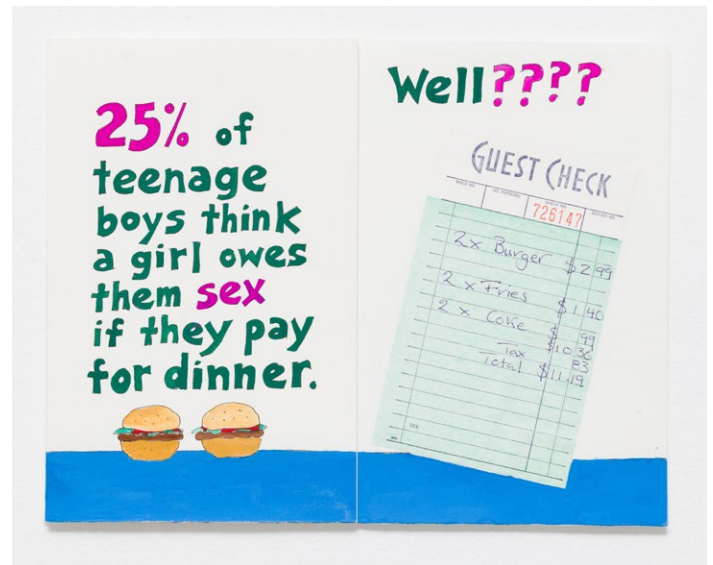
Daughter Pregnant, Gouache and ink on paper, 8.5 x 11 inches, 1992

ERIKA ROTHENBERG
HOUSE OF CARDS - 1992

LIFESTYLE



Grow Up, Gouache and ink on paper, 8.5 x 11 inches, 1992



Sex for Dinner, Gouache and ink on paper, 8.5 x 11 inches, 1992



Old and Fat, Gouache and ink on paper, 9 x 12 inches, 1992



4% of Families, Gouache and ink on paper, 10 x 9.75 inches, 1992

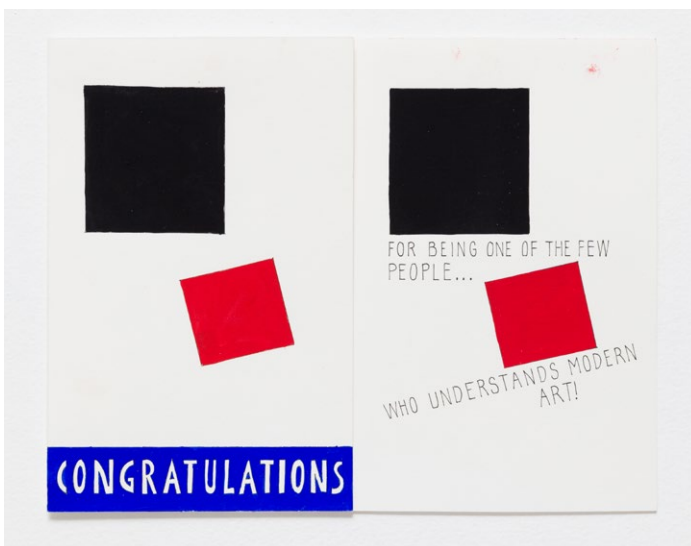
ERIKA ROTHENBERG
HOUSE OF CARDS - 1992

LIFESTYLE



To a Good Samaritan, Gouache and ink on paper, 8.5 x 11 inches, 1992

ART AND CULTURE



Congratulations, Gouache and ink on paper, 8.5 x 11 inches, 1992



Van Gogh, Gouache and ink on paper, 9 x 12 inches, 1992

ERIKA ROTHENBERG
HOUSE OF CARDS - 1992

ART AND CULTURE



Famous, Gouache and ink on paper, 8 x 10.5 inches, 1992



Too Famous, Gouache and ink on paper, 8 x 10.5 inches, 1992



I'm Angry, Gouache and ink on paper, 8.5 x 11 inches, 1992



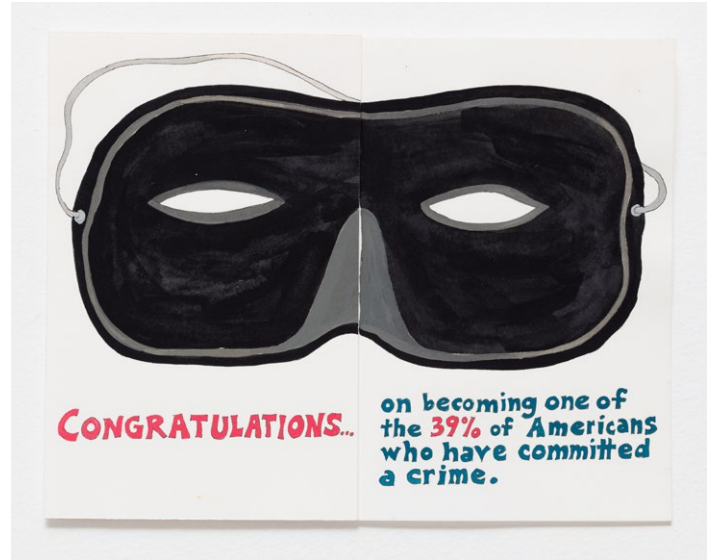
Hollywood, Gouache and ink on paper, 11 x 13.75 inches, 1992

ERIKA ROTHENBERG
HOUSE OF CARDS - 1992

CRIME



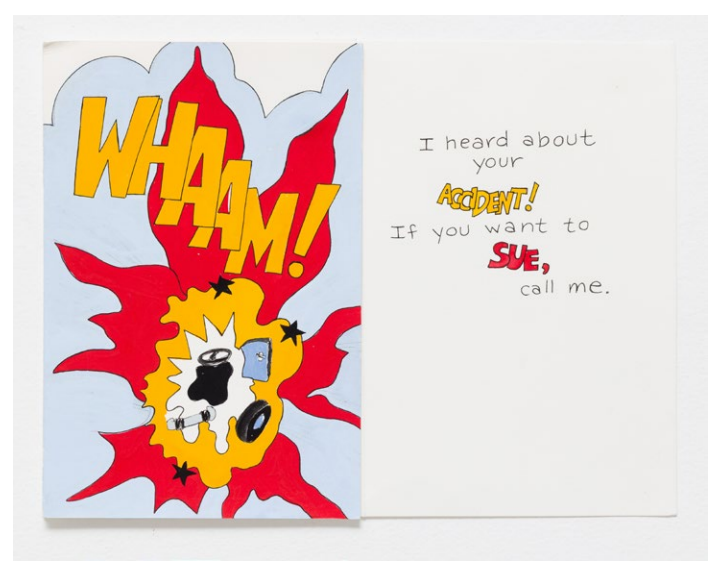
Murders on TV, Gouache and ink on paper, 8.5 x 11 inches, 1992



39% of Americans, Gouache and ink on paper, 8.5 x 11 inches, 1992



Insider Trading, Gouache and ink on paper, 8.5 x 11 inches, 1992



Wham, Gouache and ink on paper, 9 x 12 inches, 1992

ERIKA ROTHENBERG

HOUSE OF CARDS - 1992

CRIME



Nice Quiet Guy, Gouache and ink on paper, 8.5 x 11 inches, 1992



Didn't Eat Them, Gouache and ink on paper, 8.5 x 11 inches, 1992



Protection, Gouache and ink on paper, 8 x 11 inches, 1992



Blacks Who Kill Whites, Gouache and ink on paper, 8.5 x 11 inches, 1992

ERIKA ROTHENBERG
HOUSE OF CARDS - 1992

CRIME



Society's Fault, Gouache and ink on paper, 8.5 x 11 inches, 1992



Dear Father, Gouache and ink on paper, 7.25 x 10.25 inches, 1992



Guernica Neighborhood, Gouache and ink on paper, 5 x 21.5 inches, 1992

ERIKA ROTHENBERG
HOUSE OF CARDS - 1992

RELIGION



Book Burning Invite, Gouache and ink on paper, 8.5 x 11 inches, 1992



Communism, Gouache and ink on paper, 8.5 x 11 inches, 1992



Swastika, Gouache and ink on paper, 7.75 x 10.75 inches, 1992



Message from God, Gouache and ink on paper, 9.5 x 13 inches, 1992

ERIKA ROTHENBERG
HOUSE OF CARDS - 1992

RELIGION



TV Ministry, Gouache and ink on paper,
8.5 x 11 inches, 1992

HOPE



Someday, Gouache and ink on paper,
10 x 17 inches, 1992

ERIKA ROTHENBERG
HOUSE OF CARDS - 1992

POP_UP CARDS



Please don't execute my son, Gouache and ink on paper, 1992



Please execute my son's murderer, Gouache and ink on paper, 1992



Sorry the police beat you, Gouache and ink on paper, 1992



We had a great time aboard your UFO, Gouache and ink on paper, 1992

ERIKA ROTHENBERG
HOUSE OF CARDS - 1992

POP_UP CARDS



You Need therapy, Gouache and ink on paper, 1992



If you miss one more child support payment, Gouache and ink on paper, 1992



Vomit, Gouache and ink on paper, 1992



Hurt me, burn me, throw garbage on me, Gouache and ink on paper, 1992

ERIKA ROTHENBERG
HOUSE OF CARDS - 1992

POP_UP CARDS



Men and Women aren't miles apart,
Gouache and ink on paper, 1992



Great idea for how to help the homeless, Gouache and ink on paper, 1992

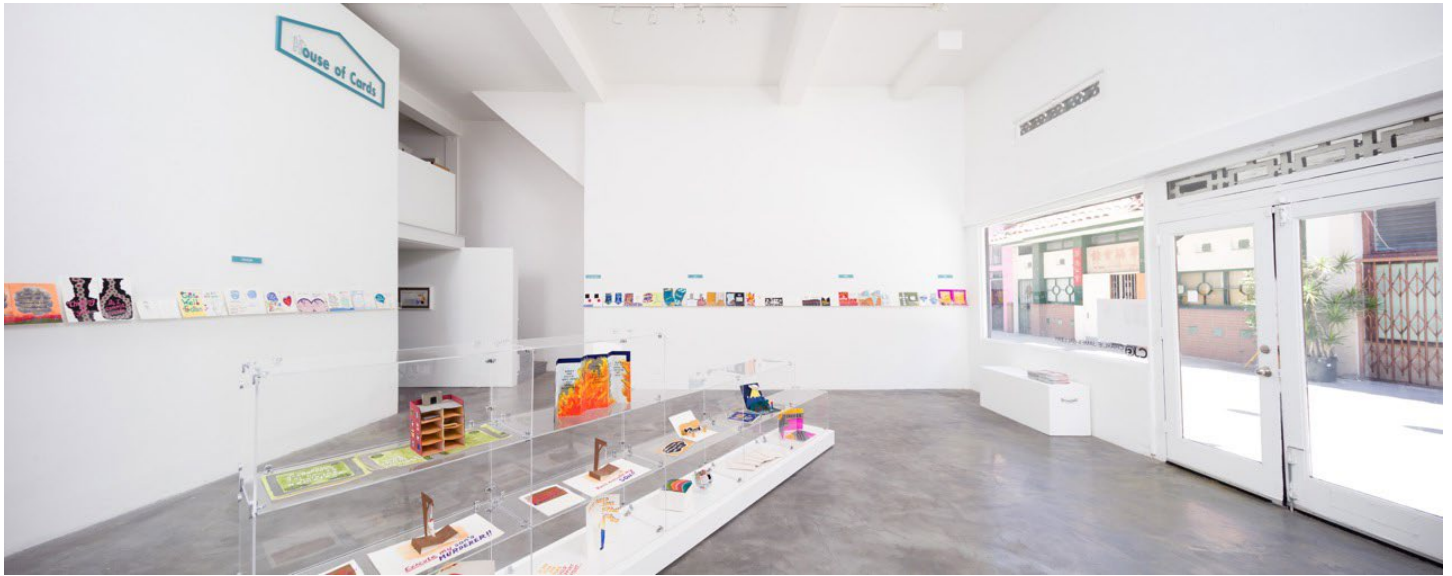
ERIKA ROTHENBERG
HOUSE OF CARDS - 1992

POP_UP CARDS



From the desk of...
(5 memo pads)
Ink on paper
1992

ERIKA ROTHENBERG
HOUSE OF CARDS - 1992

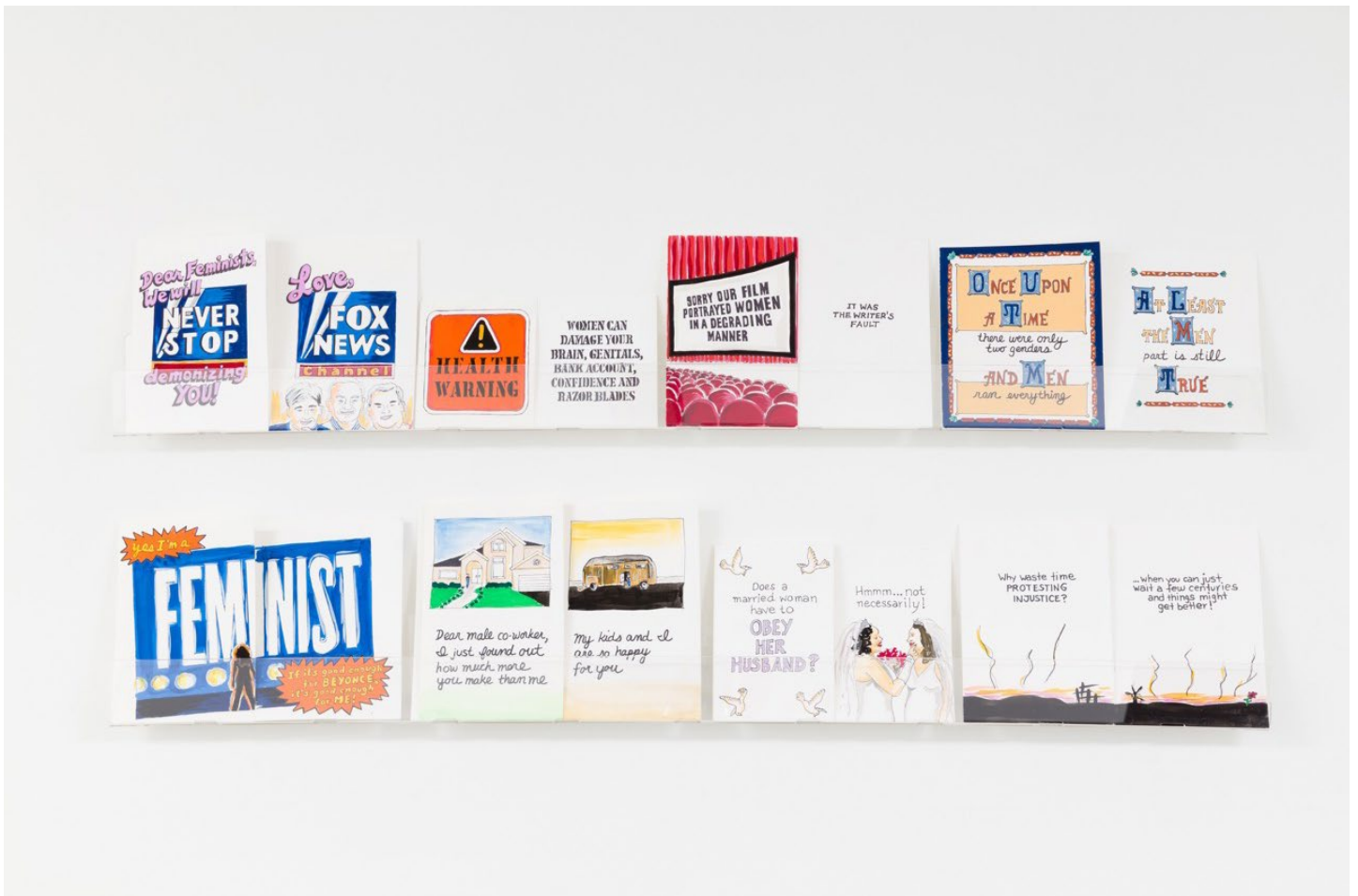


ERIKA ROTHENBERG
HOUSE OF CARDS - NEW WORK



One World So Many Ways It Could End
Acrylic on panel and wood construction
36 x 30 x 13.5 inches
Edition of 5
2015

ERIKA ROTHENBERG
HOUSE OF CARDS - NEW WORK



Misogynist/Feminist
Installation of 8 cards
Gouache and ink on paper
21 x 48 inches
2015

ERIKA ROTHENBERG
HOUSE OF CARDS - NEW WORK



Trump Cards, Gouache and ink on paper
14 x 31 inches, 2016



18,000 Murders, Gouache and ink on paper, 13.5 x 26 inches, 2015

ERIKA ROTHENBERG
HOUSE OF CARDS - NEW WORK



Run for Office, Gouache and ink on paper
13 x 26 inches, 2015

