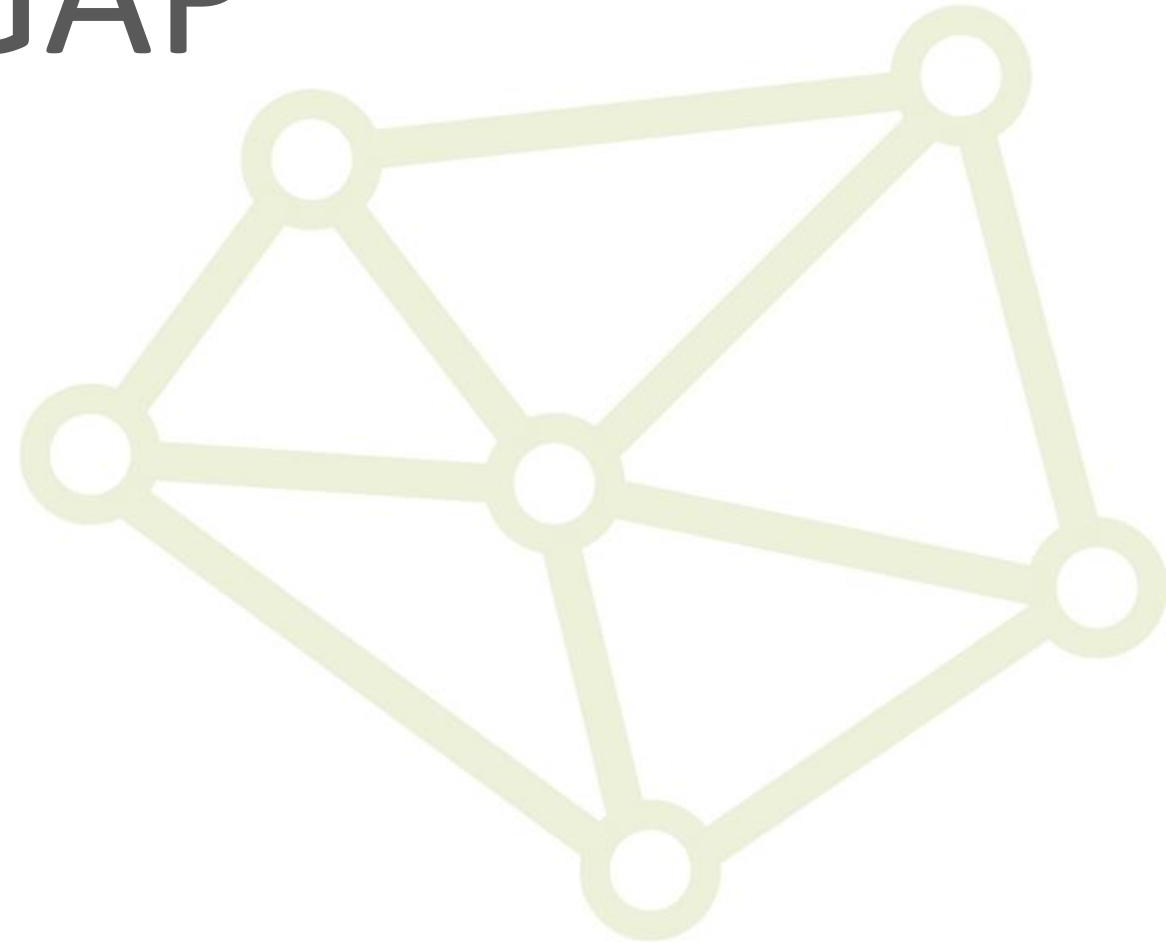
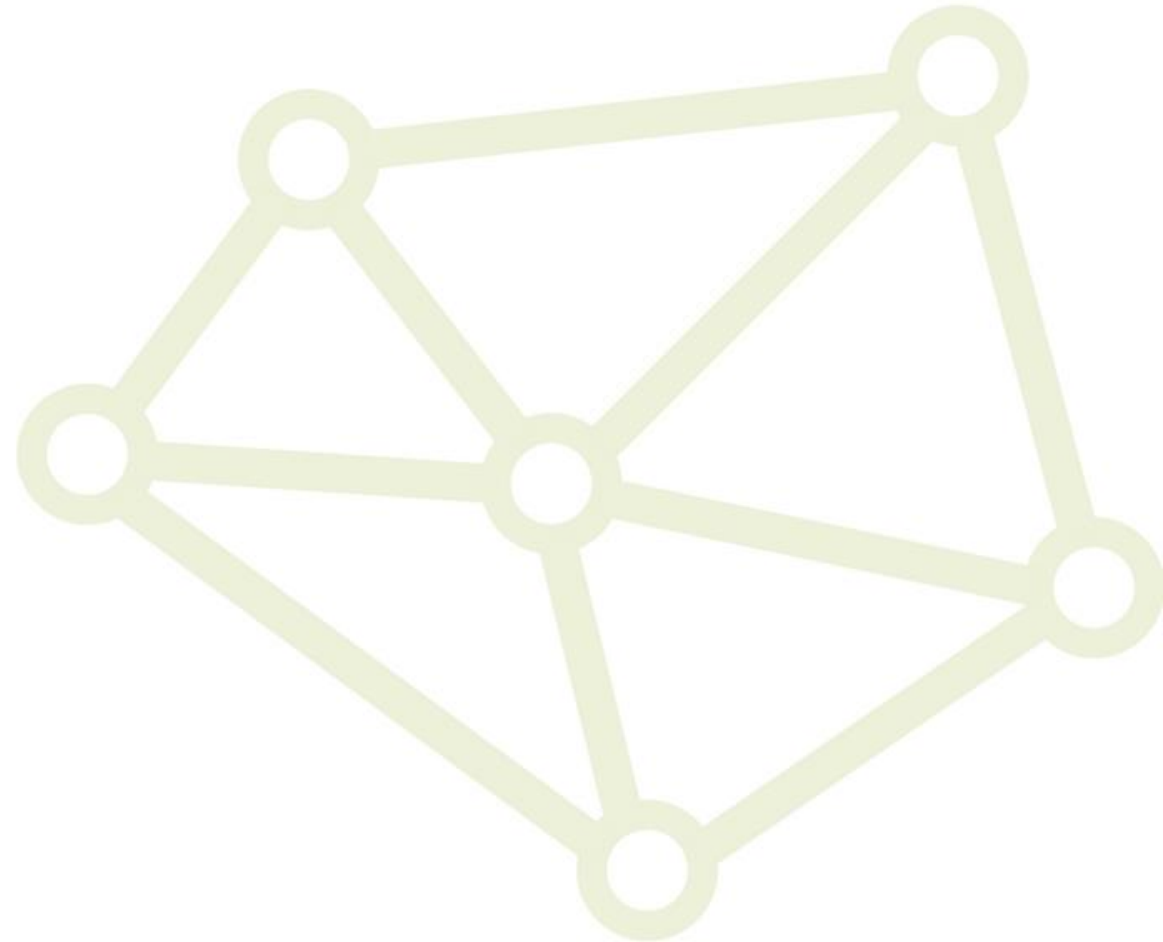


Michigan GroupGAP Network



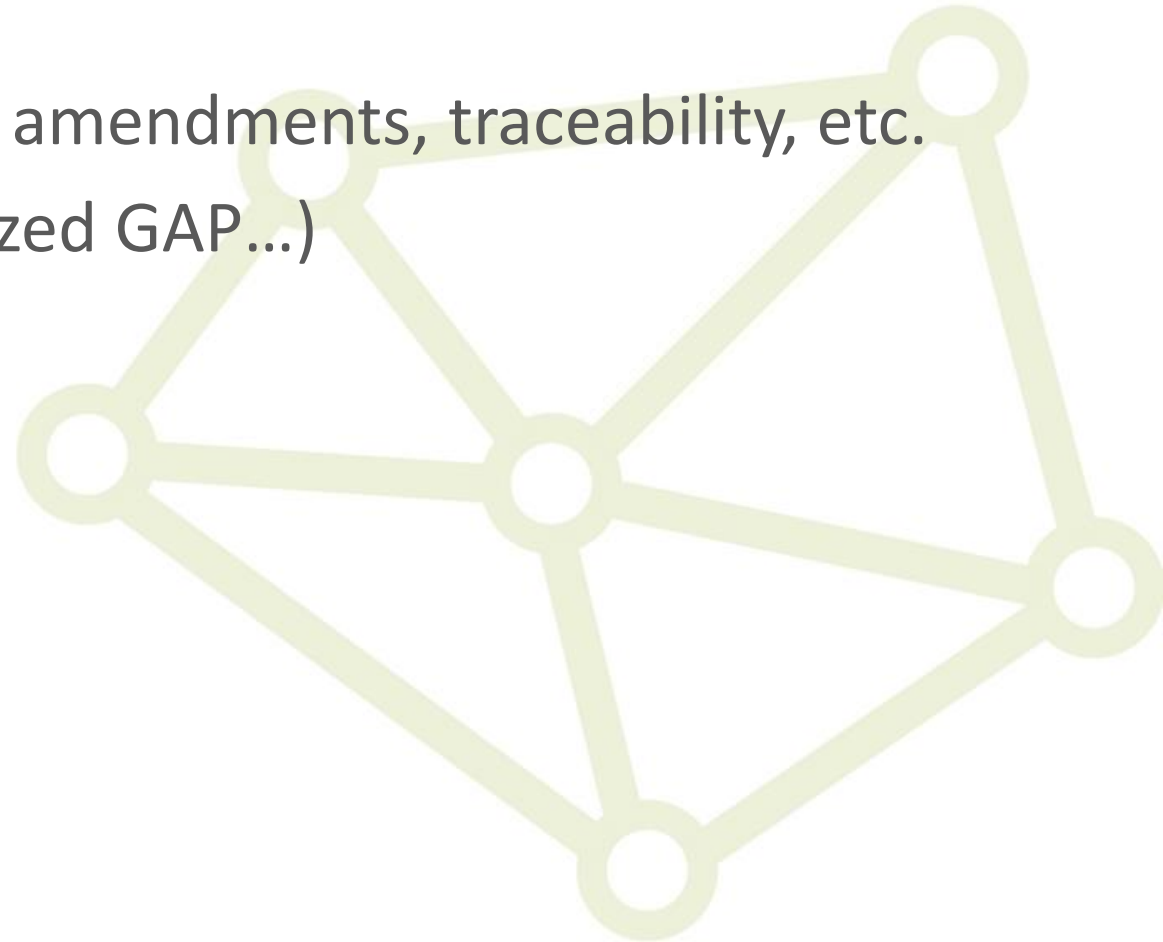
Agenda

- Foundations – GAP/GroupGAP overview
- MI GroupGAP Network overview
- A look at an annual audit cycle
- How to get involved
- Q&A



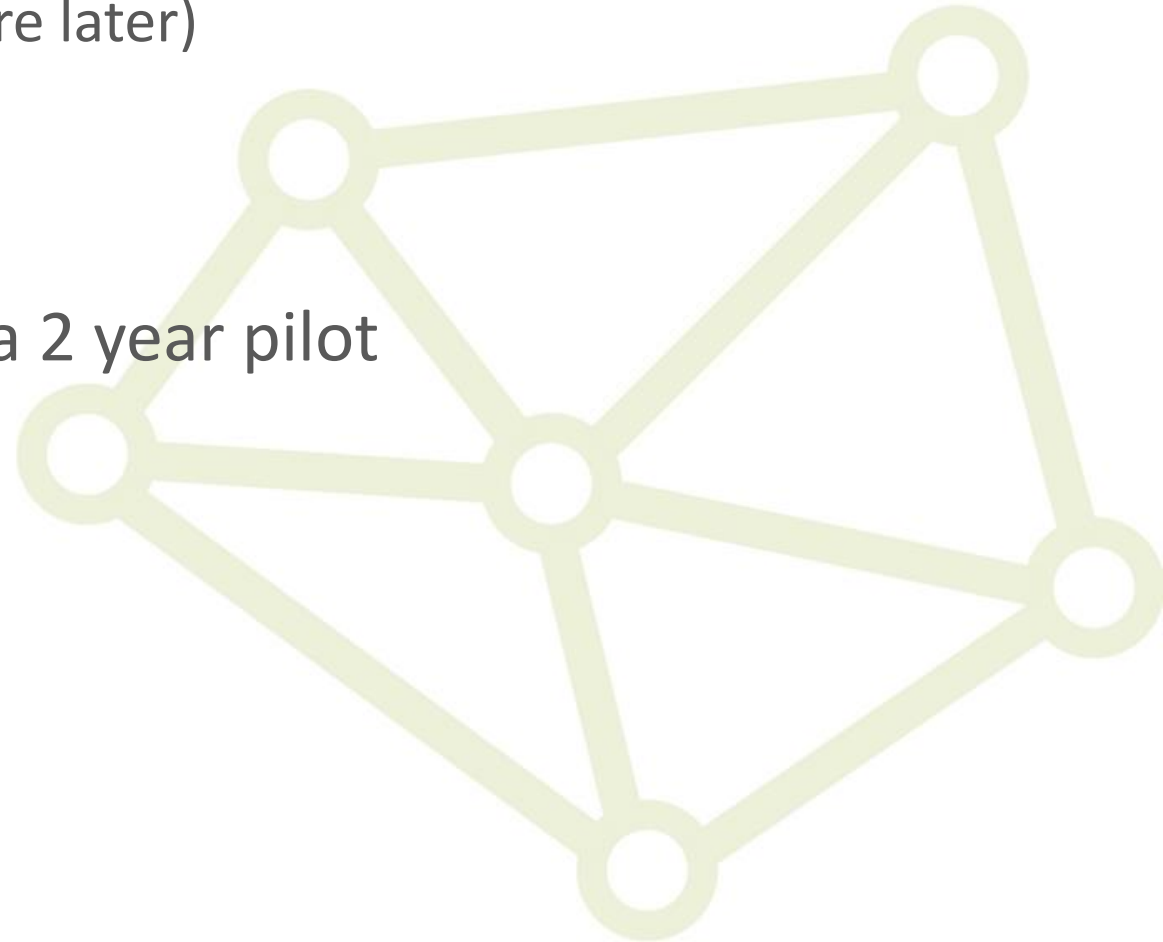
What is GAP?

- Set of best practices designed to reduce the risk of pathogen contamination in fresh produce.
- Hygiene, sanitation, water quality, soil amendments, traceability, etc.
- Several standards (GAP/GHP, Harmonized GAP...)

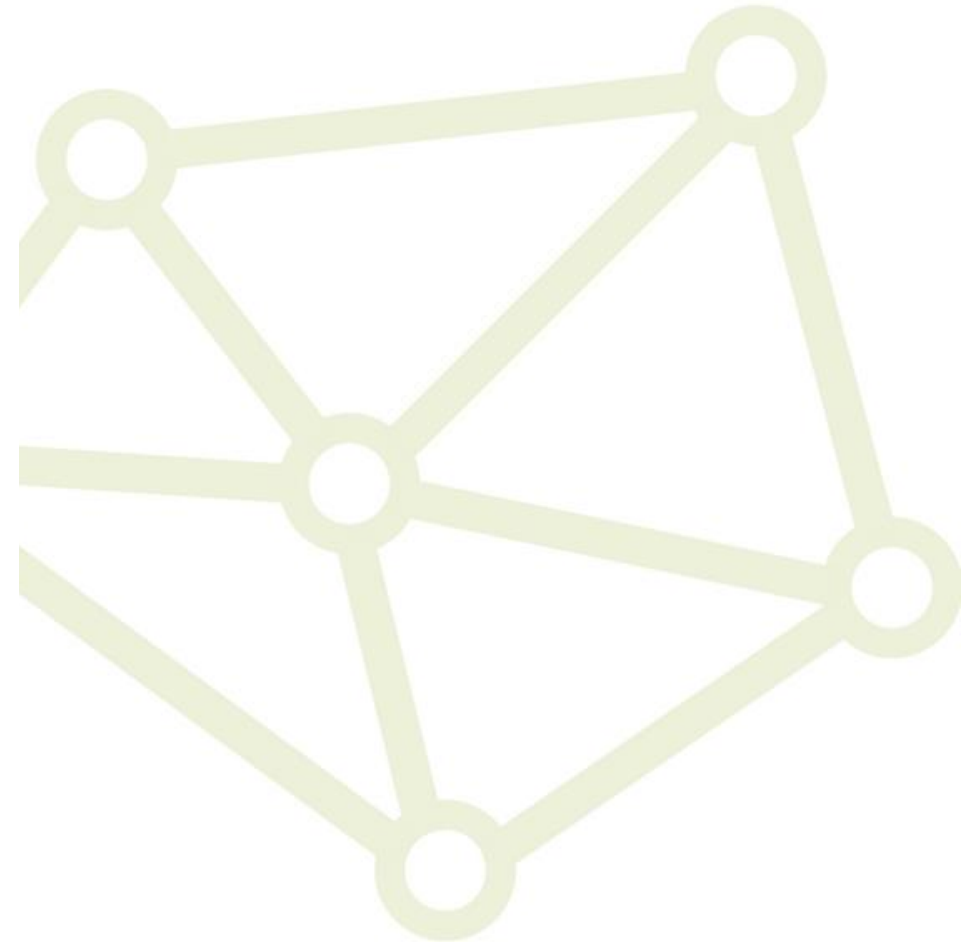
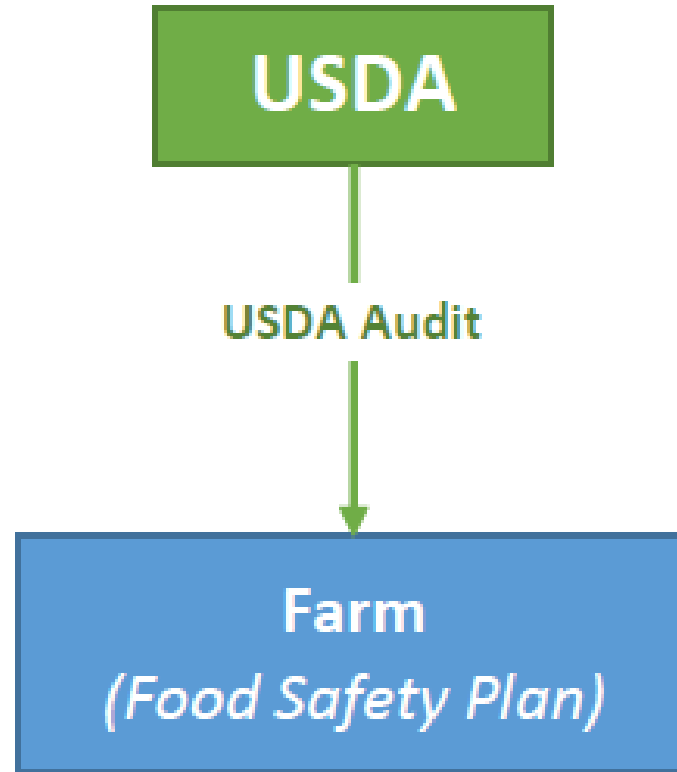


What is GroupGAP?

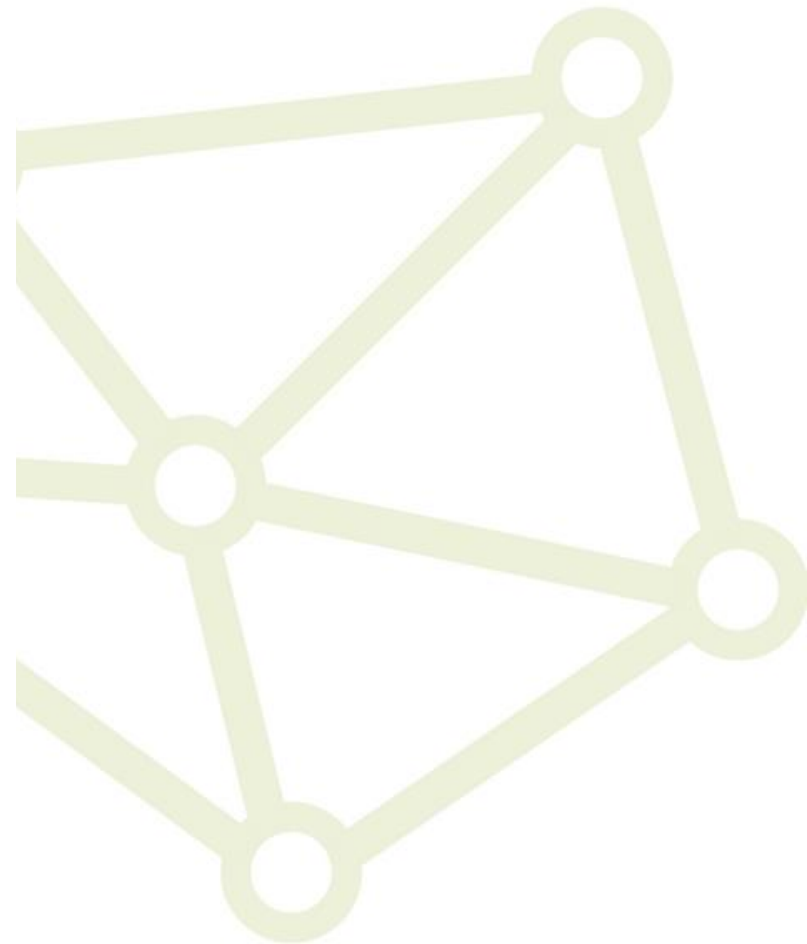
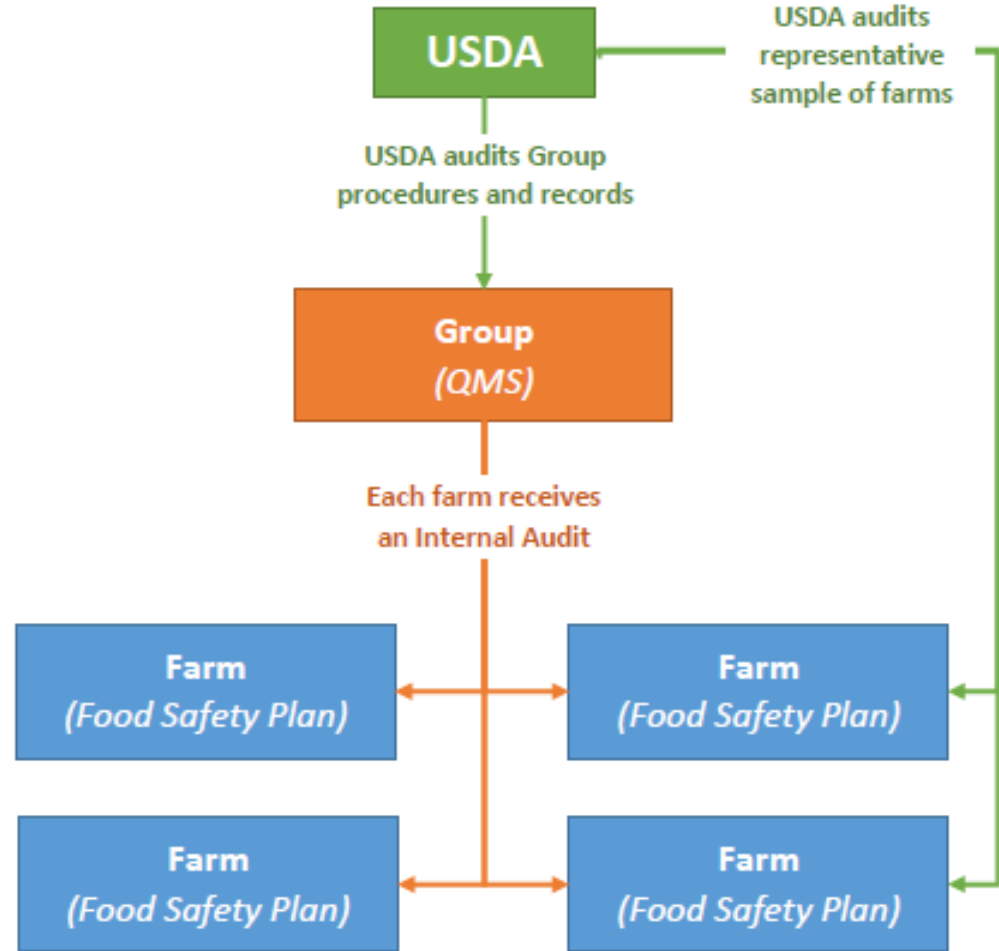
- All of that + administration
 - Internal audits, documentation, etc. (more later)
- USDA's role
- Group is certified as a whole
- Officially launched in April 2016 after a 2 year pilot



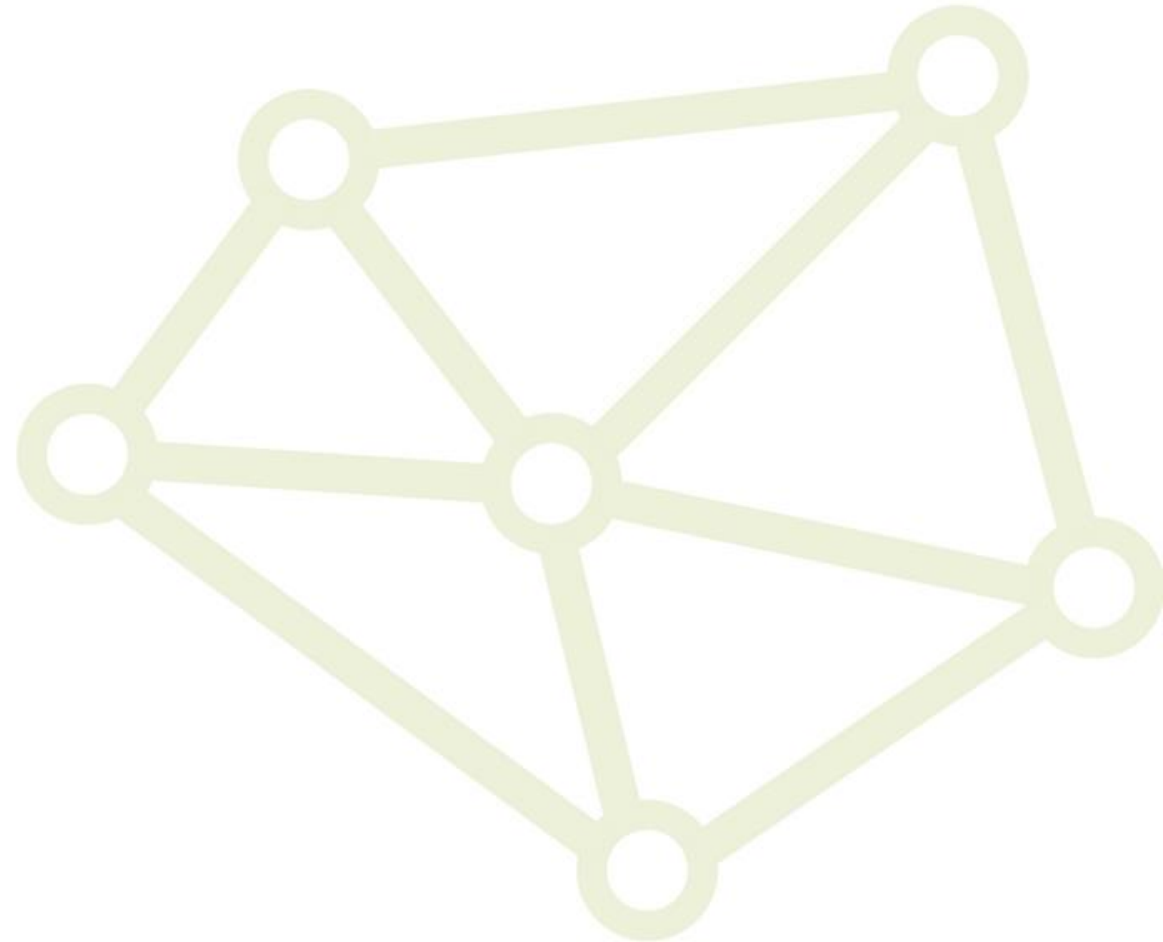
What is GroupGAP?



What is GroupGAP?

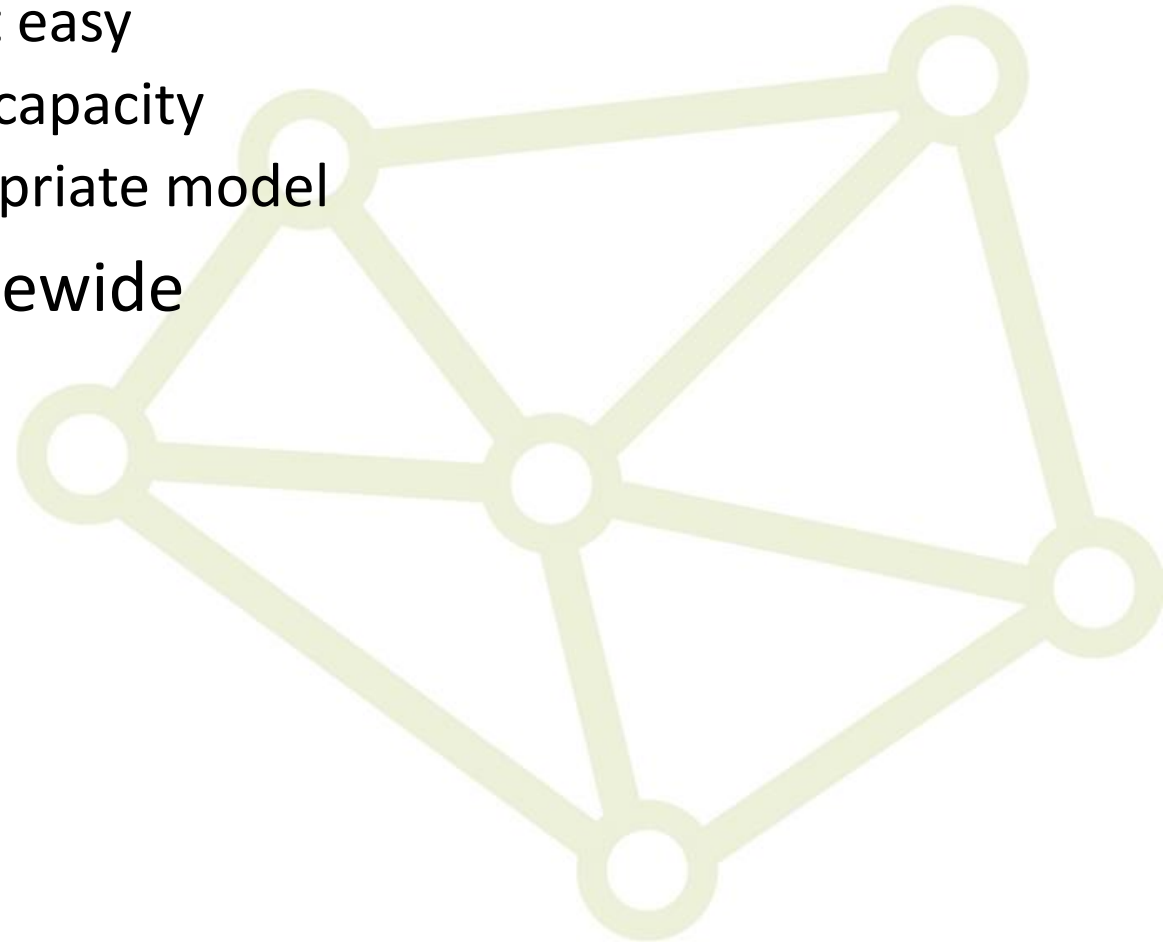


Questions?

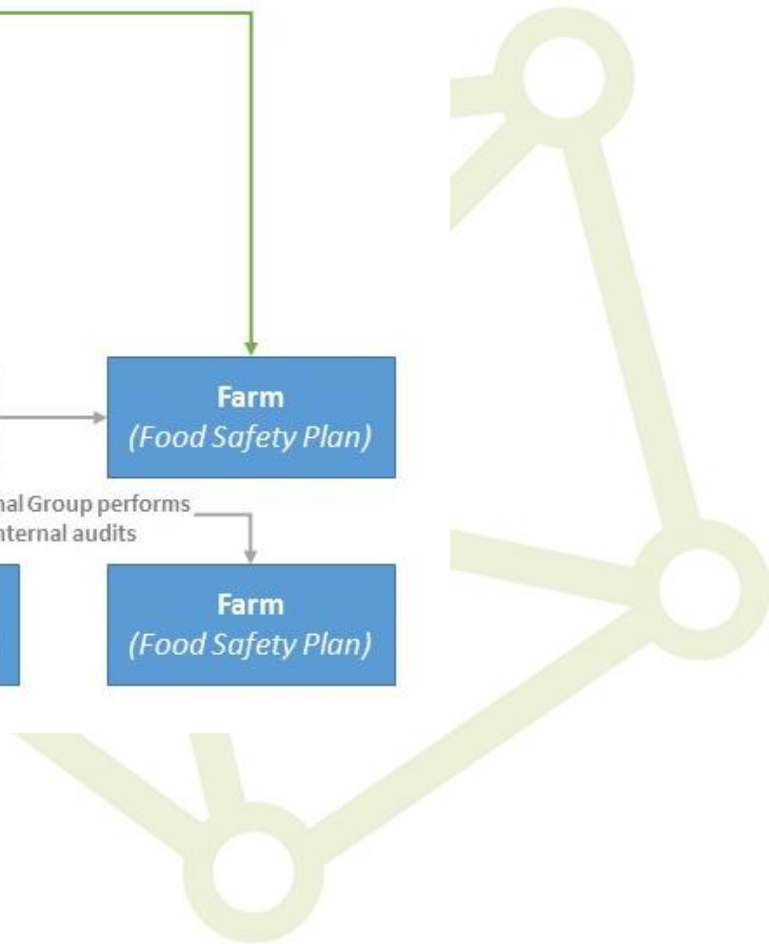
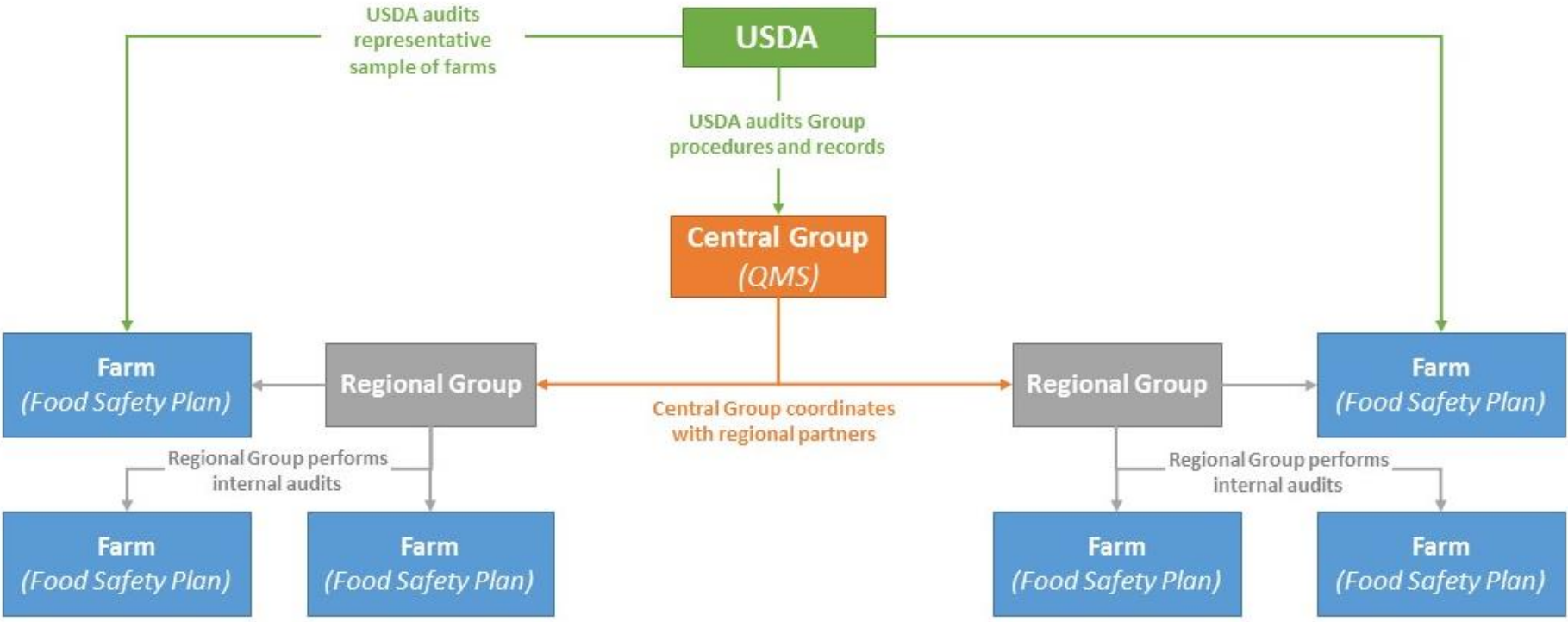


Michigan GroupGAP Network

- Lessons learned from pilot projects:
 - The admin/QMS piece of GroupGAP isn't easy
 - Regional interest, but a dearth of admin capacity
 - GroupGAP is a workable and scale-appropriate model
- Explored ways to expand program statewide

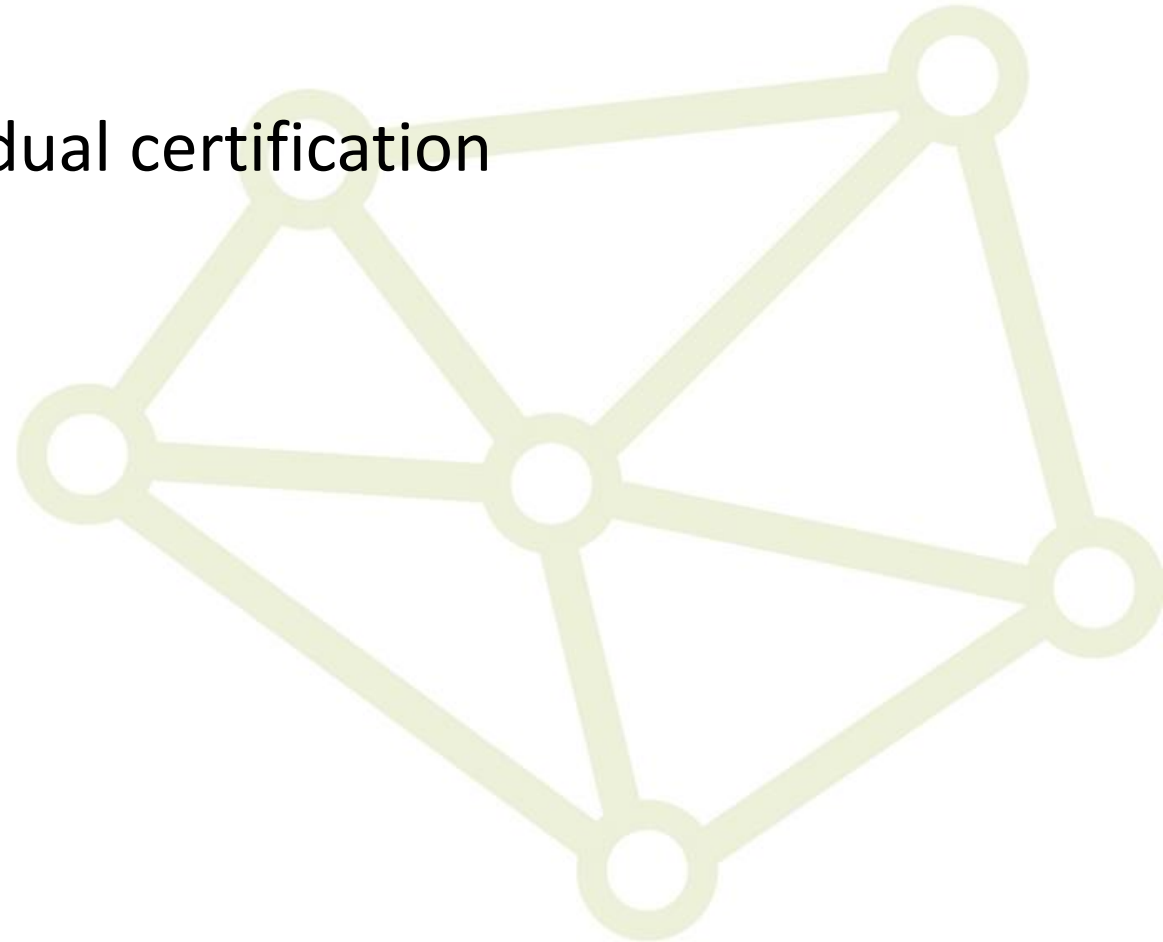


Michigan GroupGAP Network



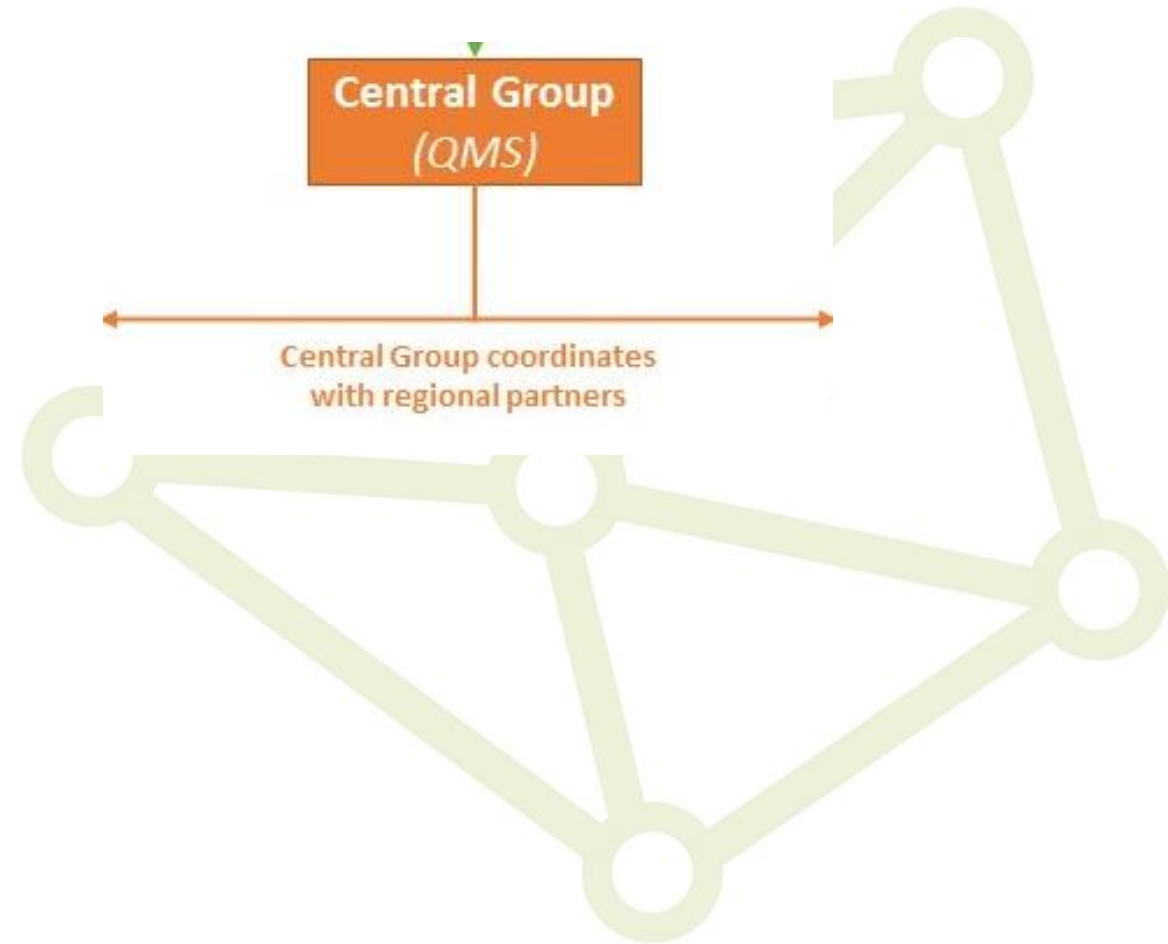
MI GroupGAP Network

- Allows larger geographic area while reducing travel cost
- Greater continuity of practice
- Cost can be kept comparable to individual certification



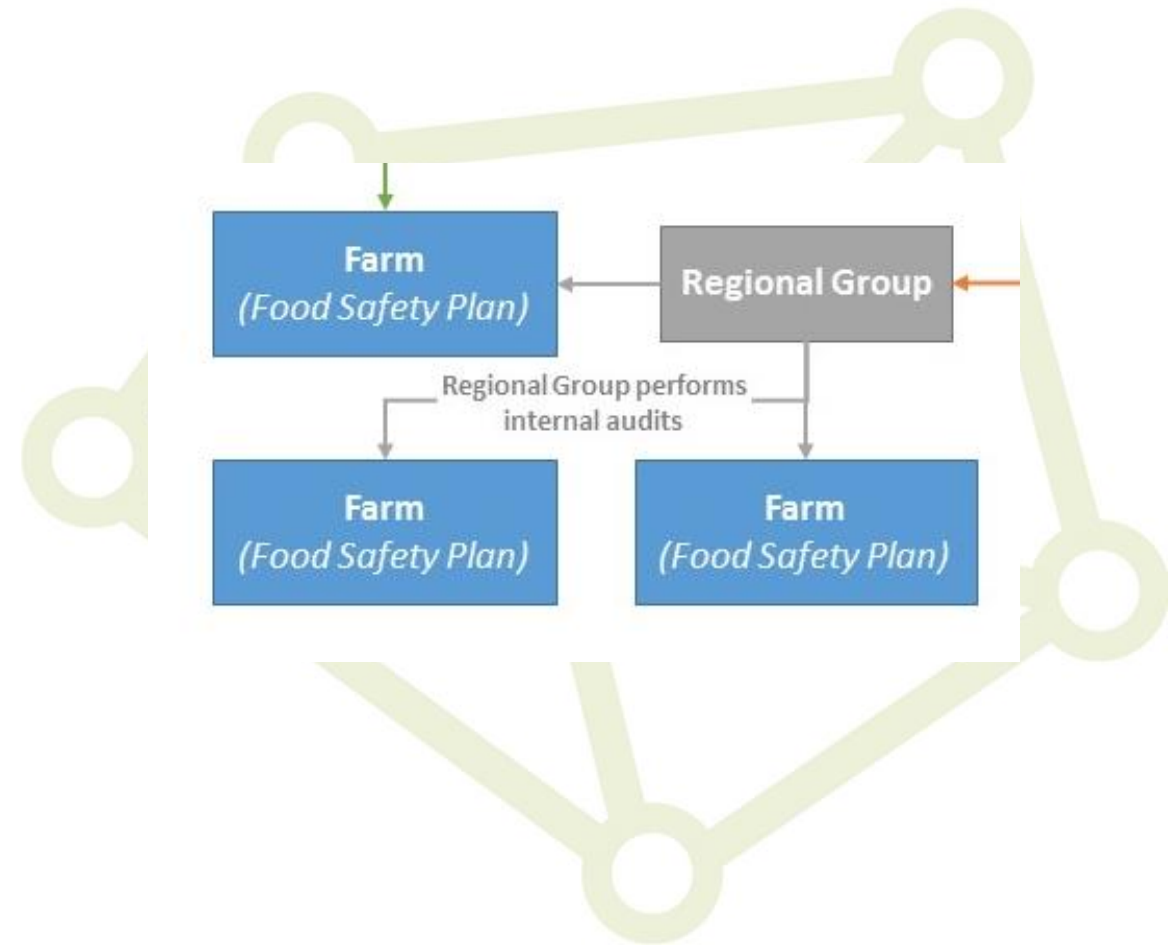
MI GroupGAP Network – Central Group

- Manages the QMS activities
 - Record keeping
 - Audit report review
 - Program integrity and quality
- Liaison to USDA
- Coordinates audit schedule
 - Can be shared with regional groups
- Central admin stuff



MI GroupGAP Network – Regional Groups

- Performs internal & unannounced farm audits
- “Local face”
 - Understands local needs
 - Provides better technical assistance
 - More oversight, due to proximity
- Hosts farmer trainings
- Farm’s role is mostly unchanged

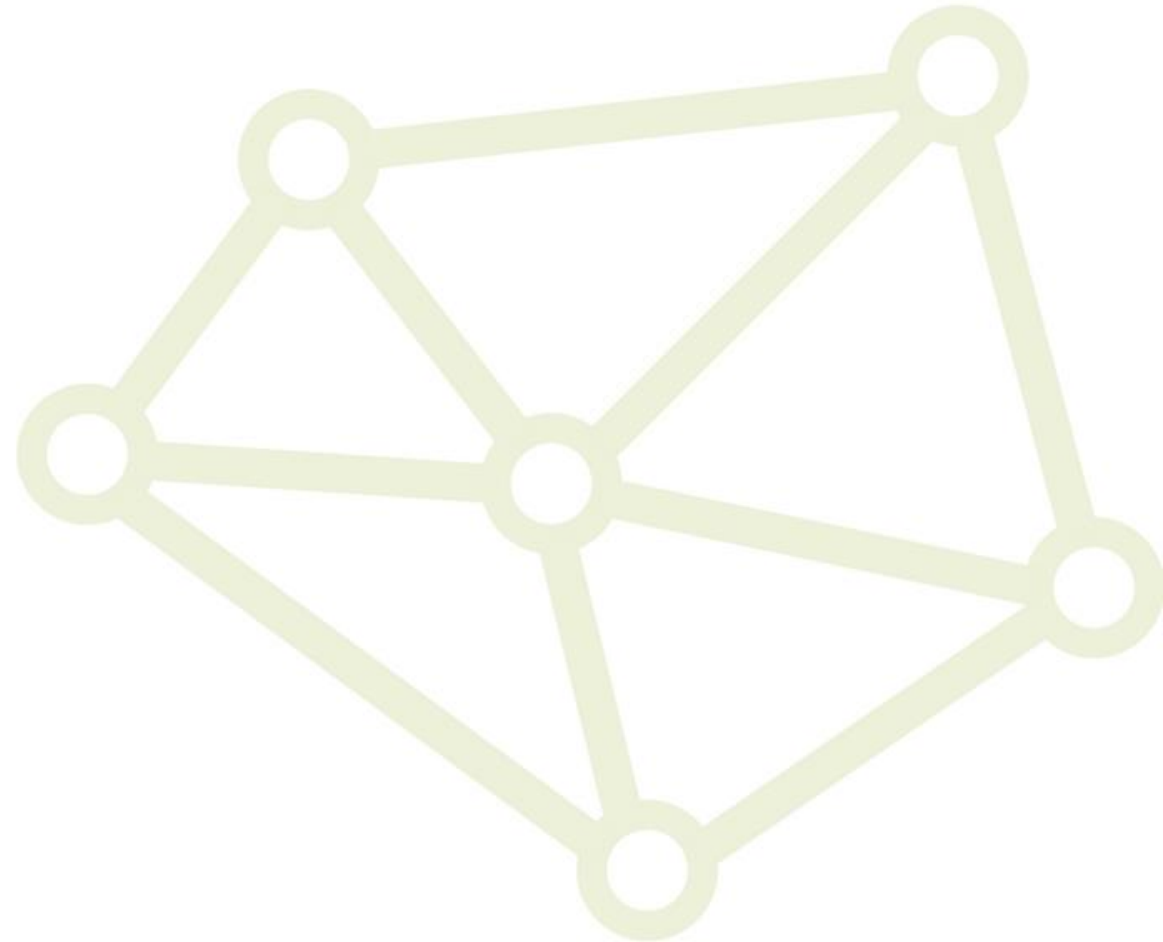


MI GroupGAP Network - USDA

- USDA audits procedures and records at the Central Group level
 - Does include auditor training records, audit reports (checked against USDA audits), and may include regional auditor interviews
- Representative sample is chosen from entire group



Questions?



The Audit Cycle – Farm Level

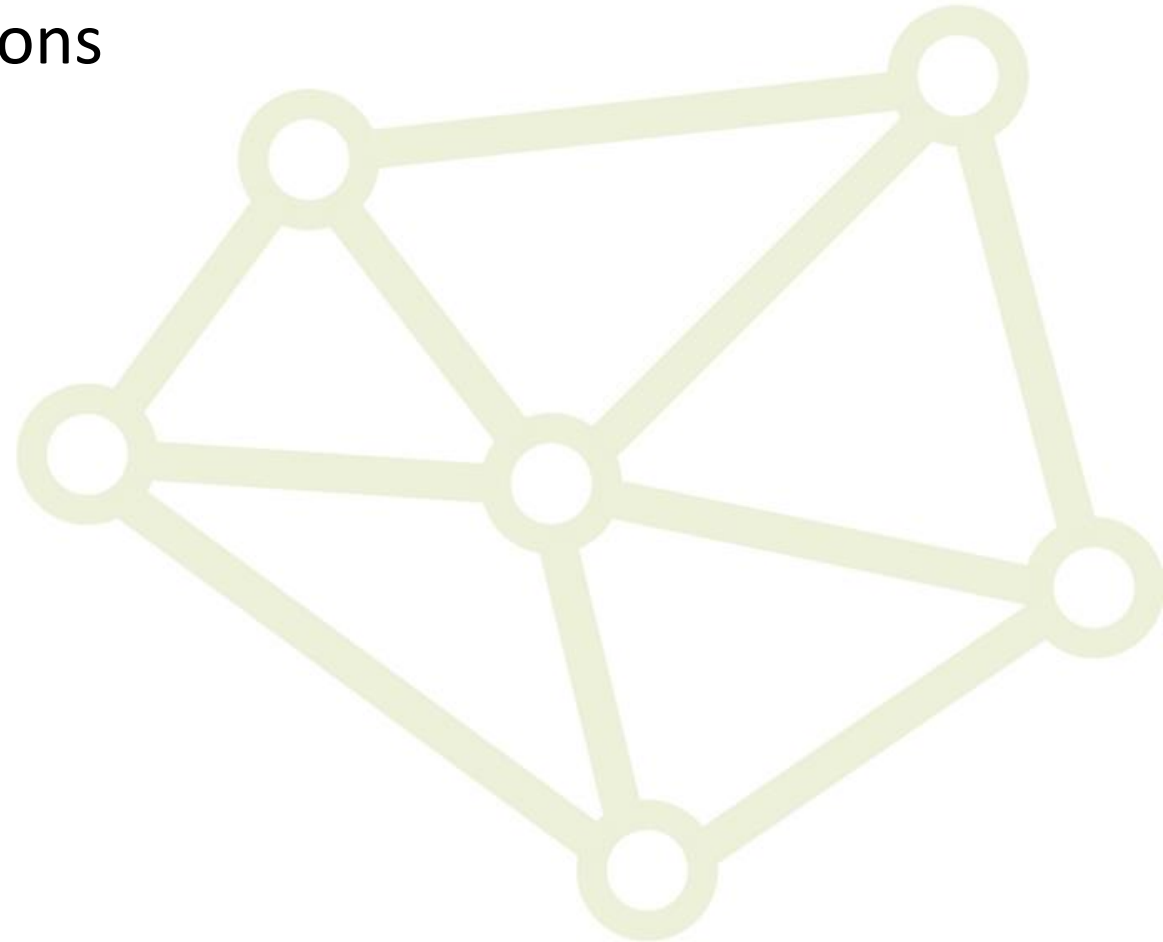
- Farmer signs Grower Agreement
- Initial visit is performed by regional auditor
- Internal audit is scheduled by Central Group (or regional)
- Internal audit is performed by regional auditor
- Auditor sends finished report to Central Group admin for approval
- Central Group sends report to farm, and/or arranges for any follow-up
- Farm is certified once internal audit is passed
- Regional auditor performs unannounced audits, as applicable

The Audit Cycle – Central Group Level

- Central Group handles USDA application, communication, and fees
- Central Group helps coordinate auditor training and continuing ed
- Central Group sends USDA list of participants
- USDA randomly selects farms that will receive a USDA audit
- USDA gives that information to MDARD, who then schedules them
- Central Group helps coordinate audits and any necessary follow-up
- USDA audits procedures and records at the Central Group level

How to Get Involved

- Farmers – how to know when you're ready
- Auditors – prerequisites and expectations
- New regional partners
- Spread the word!
- www.migroupgap.com
- Facebook



Thanks, eh!

- phil@migroupgap.com
- 1.866.943.5010 ext: 302

