

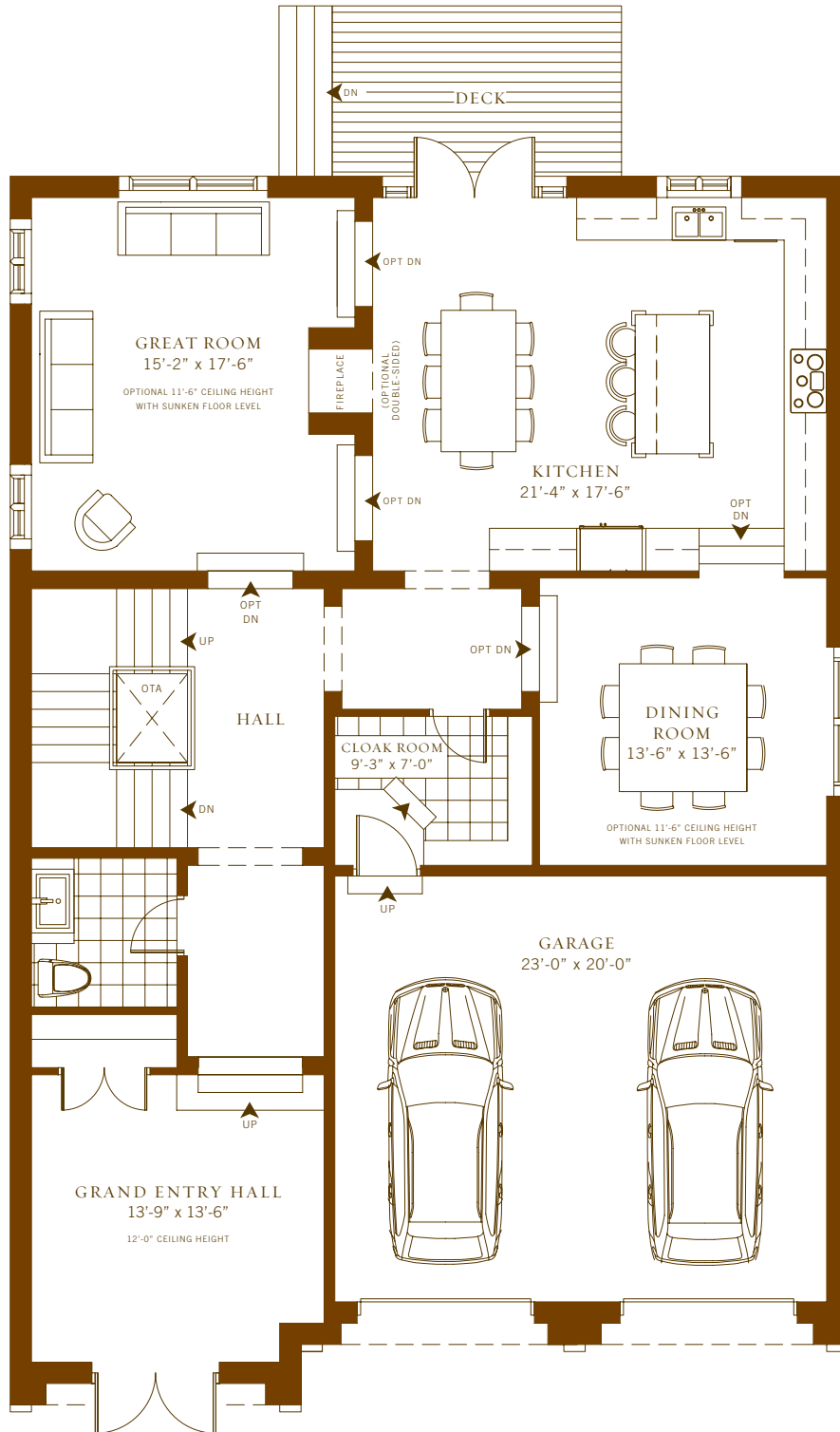
MONT PALAIS

Mississauga Road

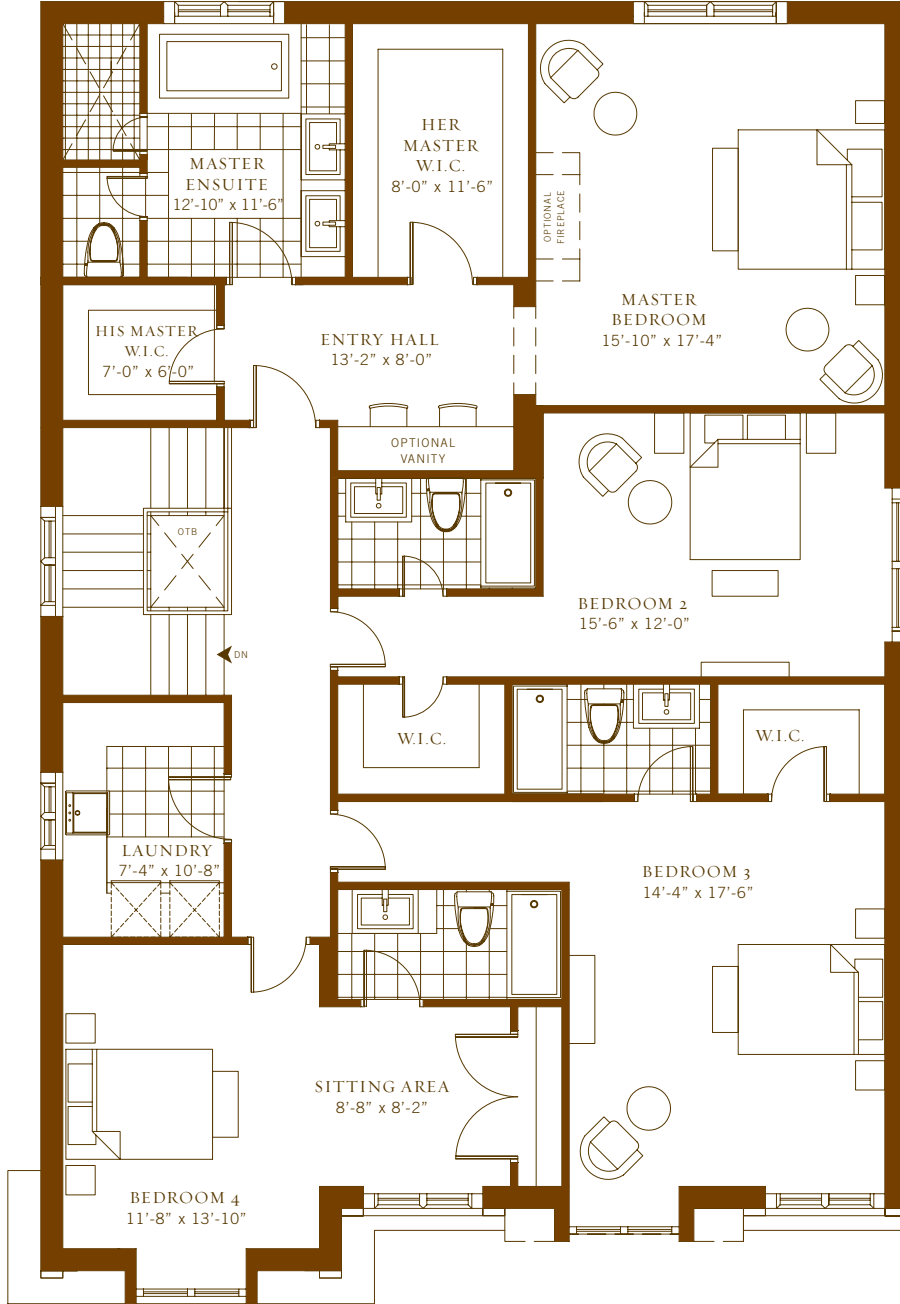


IO
Luce

LOT TEN — 3940 SF

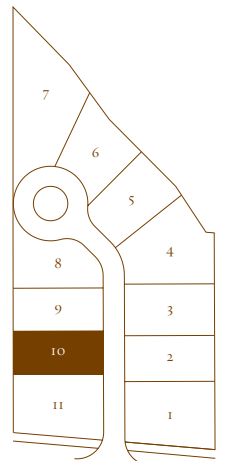


10 | GROUND FLOOR
1715 SQUARE FEET



10

SECOND FLOOR
 2225 SQUARE FEET



IO

Luce

FEATURES OF THE HOME

This option is designed for those who prefer a traditional double car garage. Entry to the home is through the grand entry hall, which boasts a dramatic 12' ceiling.

The great room and dining room can be sunken to provide 11'-6" ceiling heights. An optional double-sided fireplace is an elegant design feature which can connect the kitchen and great room, creating a warm family environment ideal for informal entertaining.

The 21'-4" x 17'-6" gourmet kitchen conveniently serves both the great room and the traditional dining room. This large, sun-drenched kitchen is a perfect family setting which can accommodate an additional breakfast/dining space, with French doors opening out onto a private deck.

The second floor accommodates four large bedrooms: each with their own generously sized ensuite bathroom and closet. The upstairs also has a convenient full-size laundry room.

The master bedroom is truly a homeowner's retreat. A private master entry hall provides central access to the bedroom, luxurious master bathroom, and two spacious walk-in closets. The sleeping area includes a restful sitting space positioned next to an optional fireplace.



HUSH

HUSH.CA | 905 286 5270