

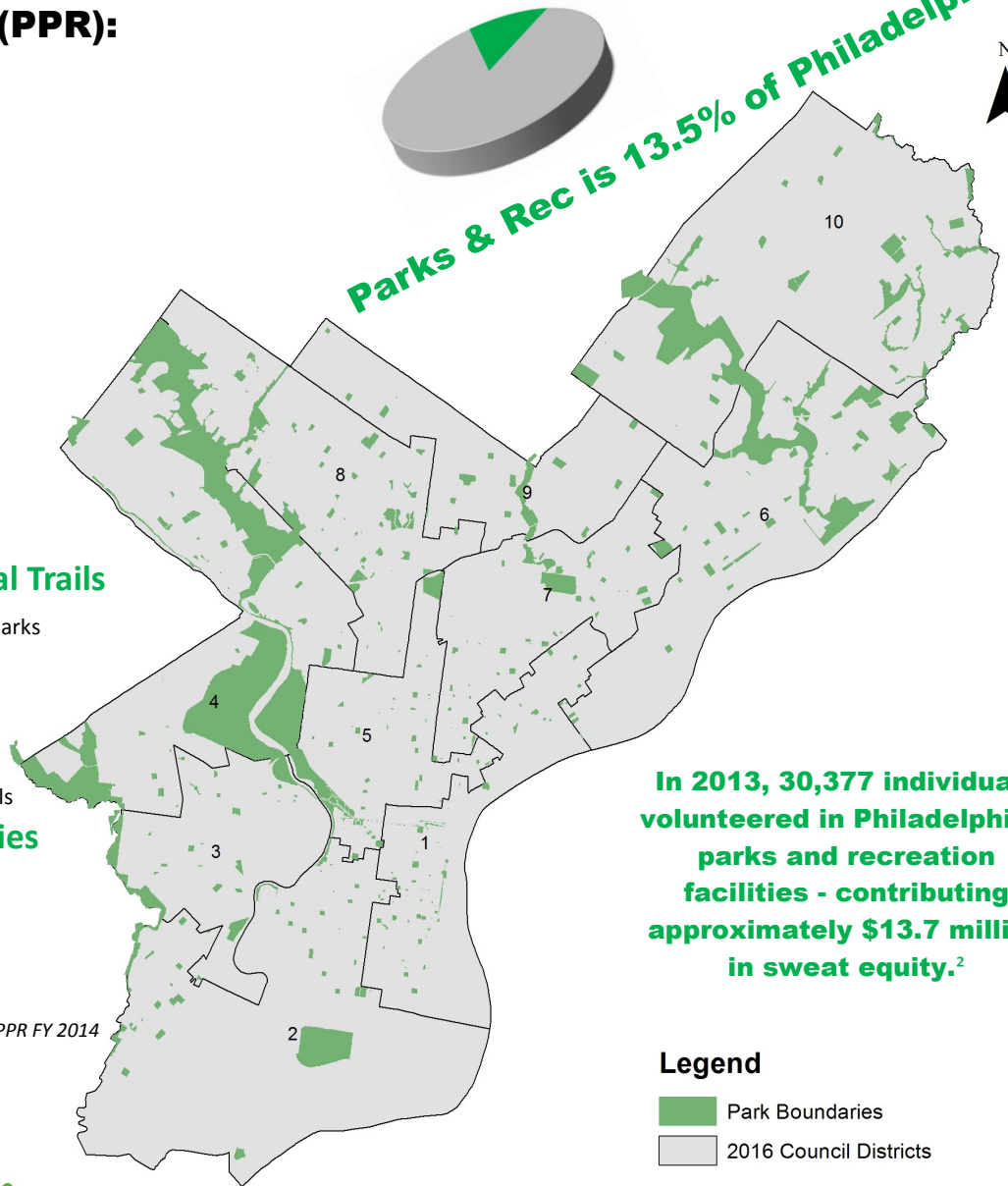
Philadelphia Parks & Recreation by the Numbers 2014

Philly Parks & Rec (PPR):

404	Ball fields
460	Basketball Courts
131	Day Camps
10,150	Land Acres
1	Disc Golf Course
2	Environmental Centers
80	Friends Groups
6	Golf Courses
55	Gymnasiums
242	Historic Structures
21	Hockey Courts
5	Ice Skating Rinks
30,377	Individual volunteers
1	Indoor Pool
220	Miles Recreational Trails
200	Neighborhood & Regional Parks
70	Outdoor pools
213	Outdoor Sculptures
140	Picnic Sites
254	Playgrounds
120	Rec Center Advisory Councils
156	Recreation Facilities
7	Spray Grounds
575	Structures
277	Tennis Courts
8	War Memorial Parks
270	Sports Fields PPR

Source PPR FY 2014

Parks & Rec is 13.5% of Philadelphia¹



In 2013, 30,377 individuals volunteered in Philadelphia's parks and recreation facilities - contributing approximately \$13.7 million in sweat equity.²

Legend

- Park Boundaries
- 2016 Council Districts

0 0.75 1.5 3 4.5 6 Miles



Philadelphia's New Department of Parks and Recreation

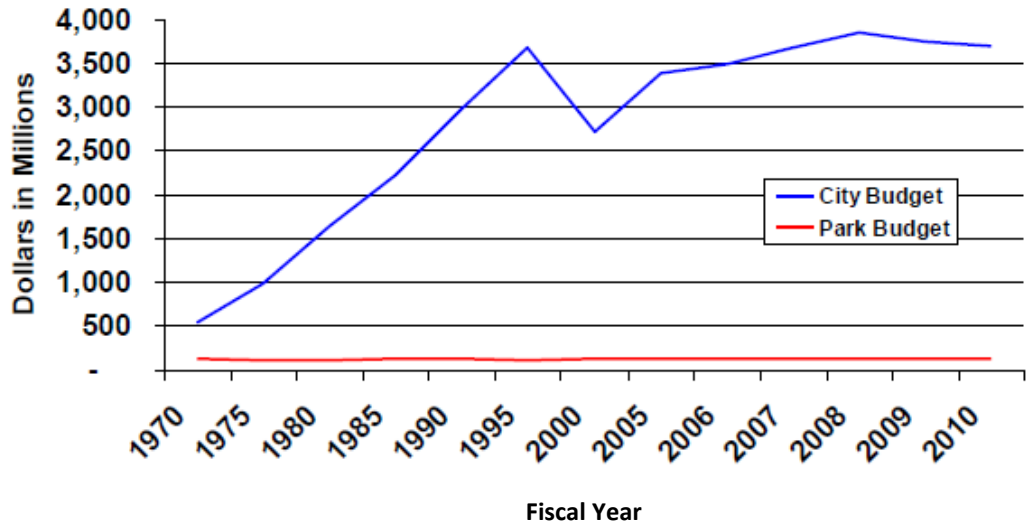
On November 4, 2008, the citizens of Philadelphia overwhelmingly approved a Charter change reforming the City's parks and recreation and merging the Fairmount Park Commission and Department of Recreation into the new Department of Parks and Recreation. Spearheaded by the Philadelphia Parks Alliance, this reform referendum was born out of years of rigorous study and dialogue that included citizens, government officials, community & business organizations and national experts. The Charter change mandated the formation of a new Commission on Parks and Recreation appointed through a transparent and public process, and the establishment of - for the first time ever - guidelines for parkland protection. Since the official completion of the merger on July 1, 2010, the new Department has been working to revitalize one of the greatest urban parks in the nation while dealing with decades of chronic underfunding.

¹Trust for Public Land 2014 City Park Facts

²Calculated using a conservative estimate of 20 hours per year at the hourly rate of \$22.55 established by Independent Sector.

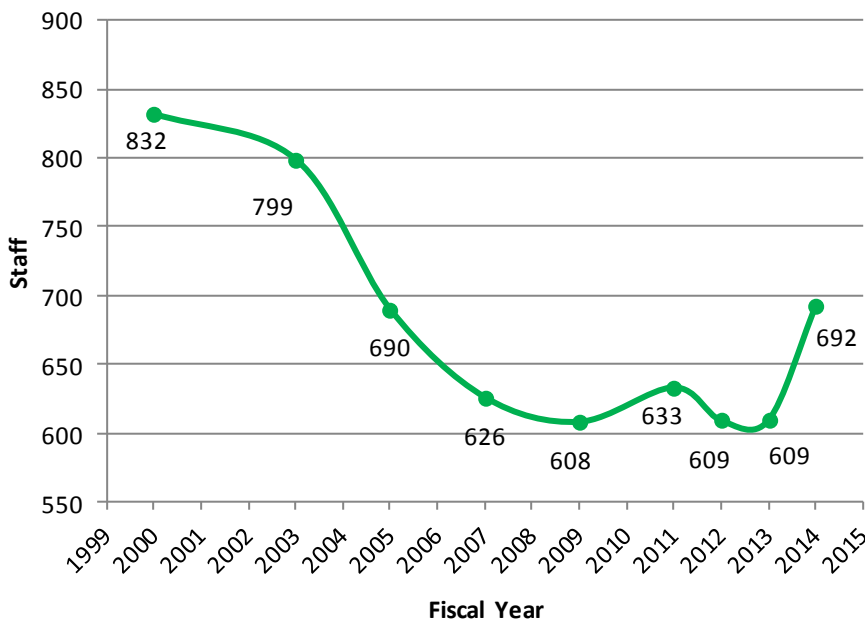
Philadelphia Parks & Recreation by the Numbers 2014

Budget Neglect of Fairmount Park FY 1970-2010¹



Philadelphia's parks have been chronically underfunded for decades!

Parks & Recreation Staff FY 2000-2014¹



Despite partial restoration of funding in FY 2013, Philadelphia has 17% fewer parks and recreation staff than in FY 2000!

In 1971, Philadelphia had 525 Park Guard Police but in 2014 we have only 18 Park Rangers!

Source PPR

37% of Philadelphia's children live in poverty² Families in poverty depend on parks and recreation. They cannot afford to join a gym, take a family vacation or to send their children to summer camp.

¹Historic budget and staff numbers going back to FY 1970, are only available for Fairmount Park. After FY 2010, parks & rec budgets are combined and are not available separately.
²National Kids Count 2012