



RECONFIGURED RANCH TURNS MODERN



A

Path from
bedroom wing
led into walls
around stairs

B

Small
dining
area
facing
street

BEFORE: PHOTOS

Photo locations shown
on plan below



C

Stair to basement and structural beam line in middle of house.
Person standing in old kitchen at front of house



D

Awkward family room, imposing fireplace/chimney made
reconfiguring a challenge

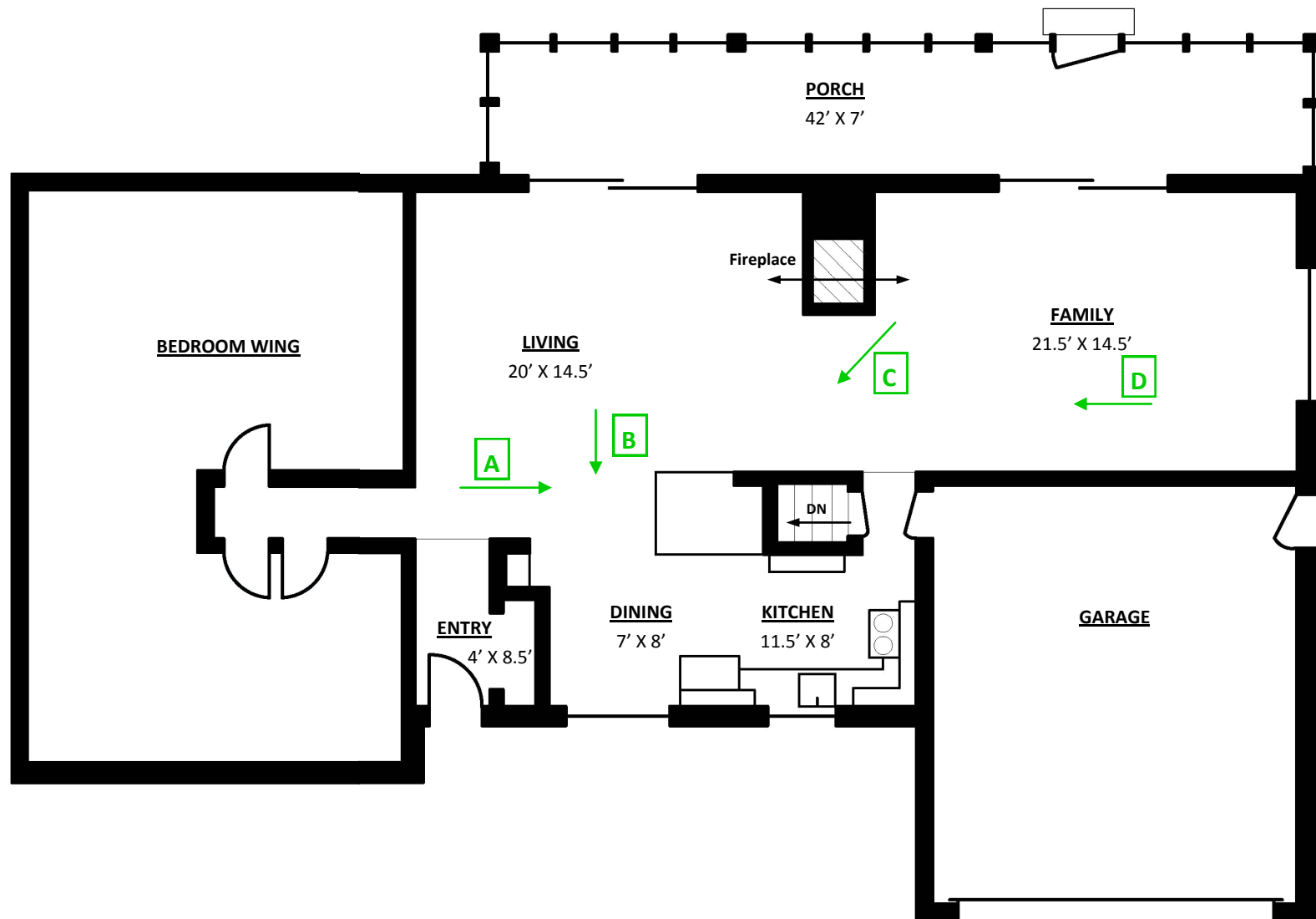
BEFORE: FLOOR PLAN

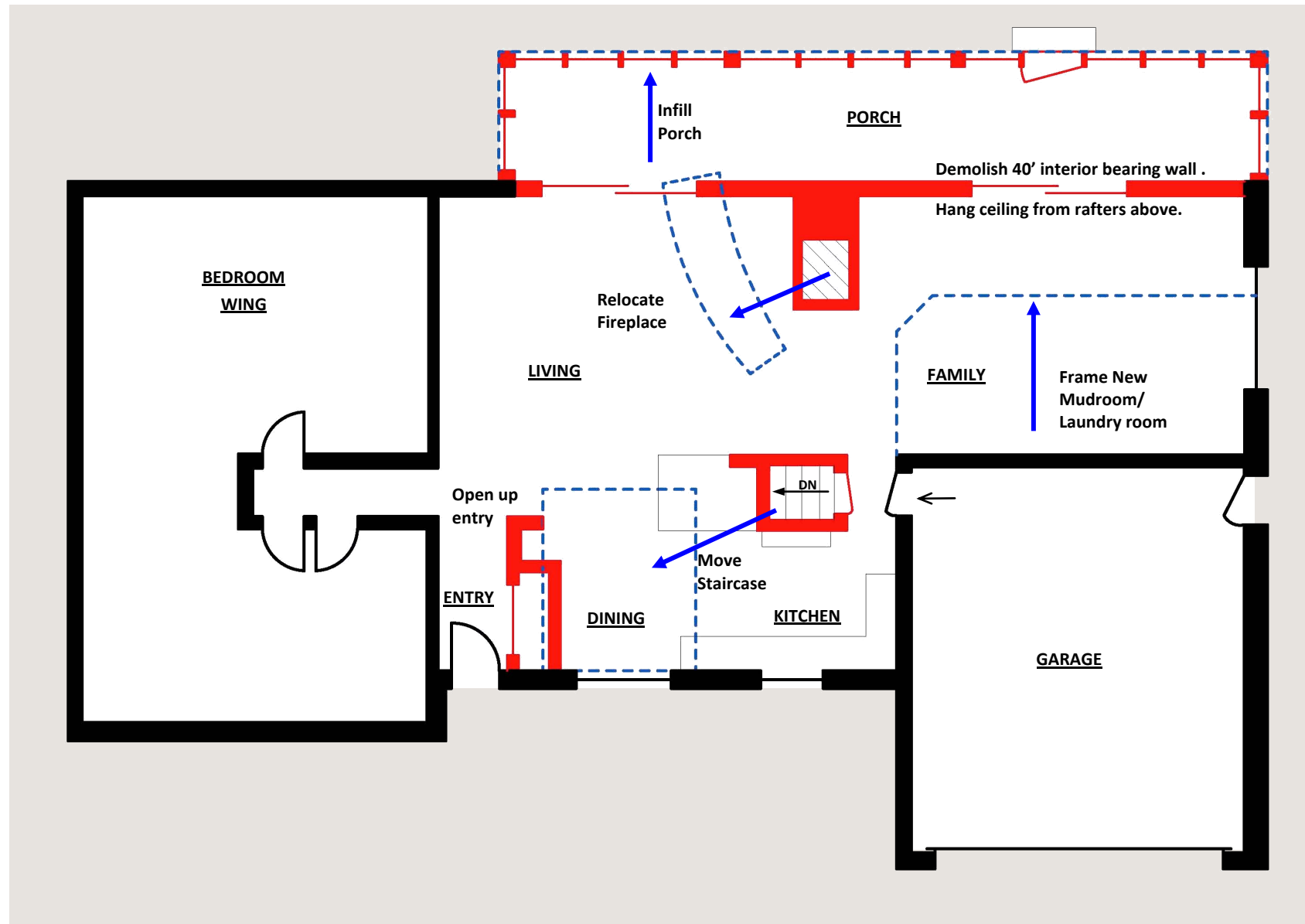
1959 Brick Ranch

Chopped up rooms, family & living room awkward to furnish

Small kitchen, no views to backyard

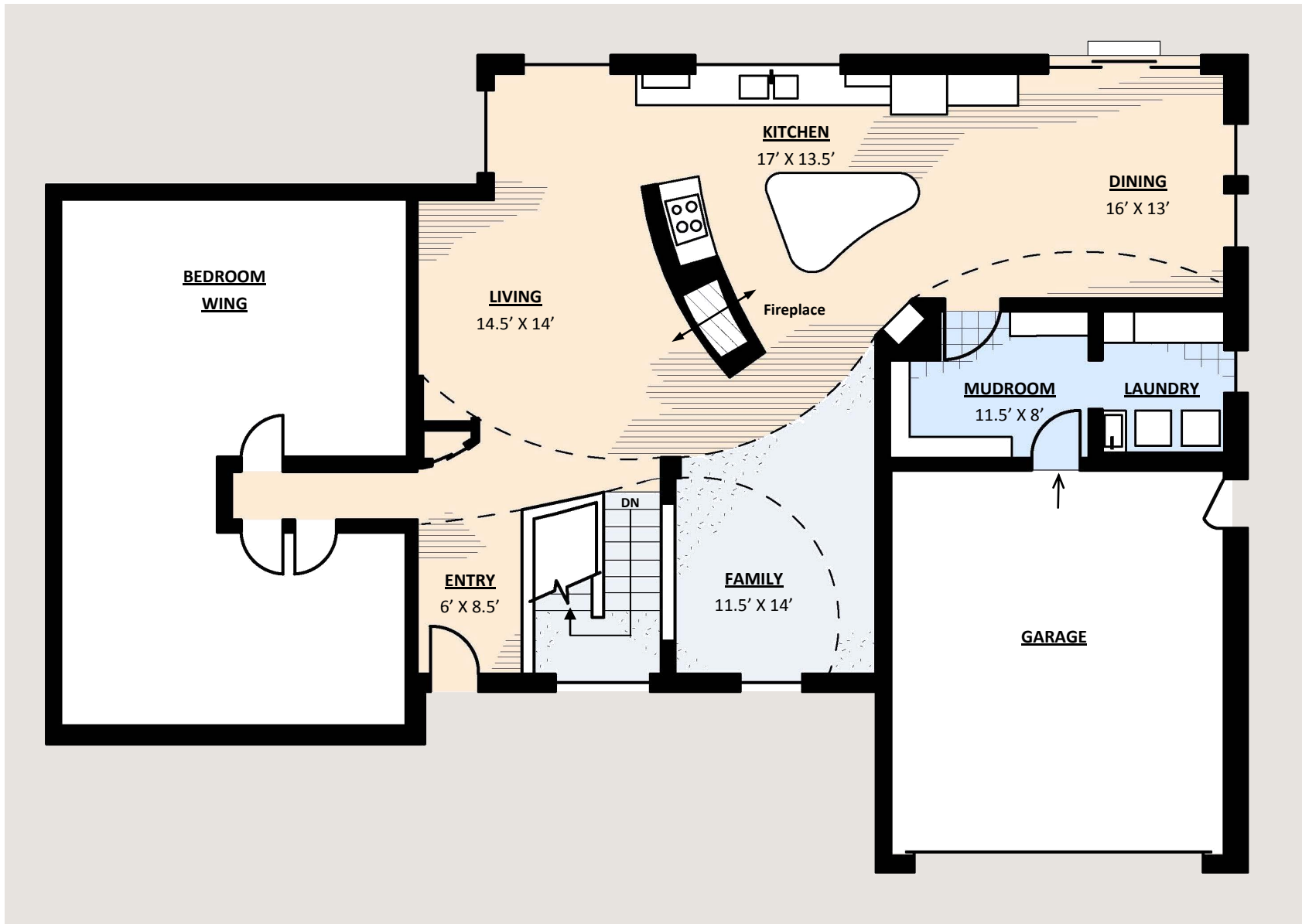
Stair to basement cuts floor plan in half



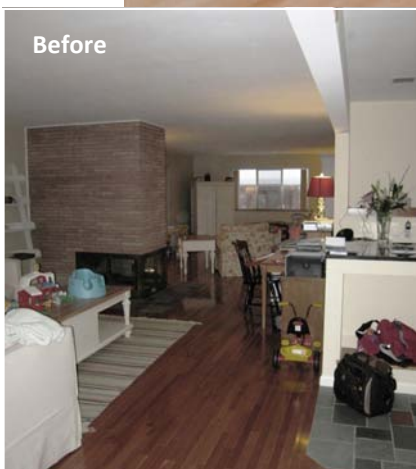


BIG MUSCLE MOVEMENTS

AFTER



ENTRY/LIVING RM



The completed home now has an open floor plan, natural curves that lead your eye around corners from space to space, and bold and fresh colors. This view is across the entry, staircase, and living room.

The dropped header (see before photo at left) is now concealed with the curved soffit above. Spaces are partially open to each other with wall cutouts, a see-through fireplace, and long sightlines.

KITCHEN



The kitchen was relocated to the backside and sits partially in the old screened porch. It now features clean modern lines, custom cabinetry, white quartz countertops, large windows facing the backyard, modern faucetry and lighting, a well positioned fireplace, and a gracious sense of space.

CURVED MONOLITH

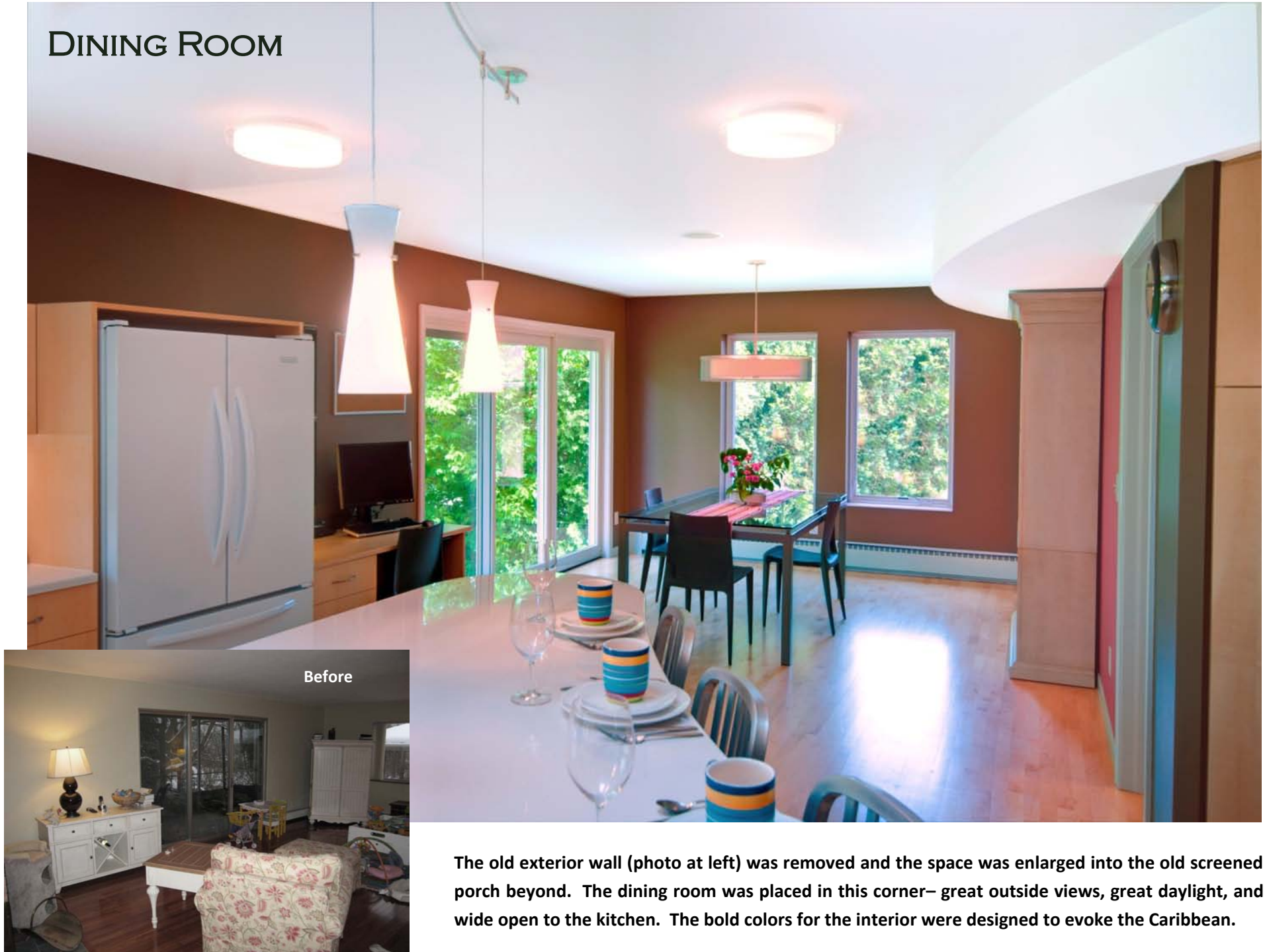
A thick dividing wall between the living room and kitchen was designed to be a featured element. This 'monolith' is finished with a textured plaster and houses a see-thru linear burner fireplace on one side and a cooktop on the other. Colorful glass tiles sparkle on backsplash behind the white countertop and white glass cooktop. A custom built hood is built-in above.

A recurring design detail is gentle curves abutting straight lines, as seen where the face of the fireplace meets the curved monolith face.

On the backside of the monolith (in photo below) clear sightlines to the kitchen and the dining room are visible.

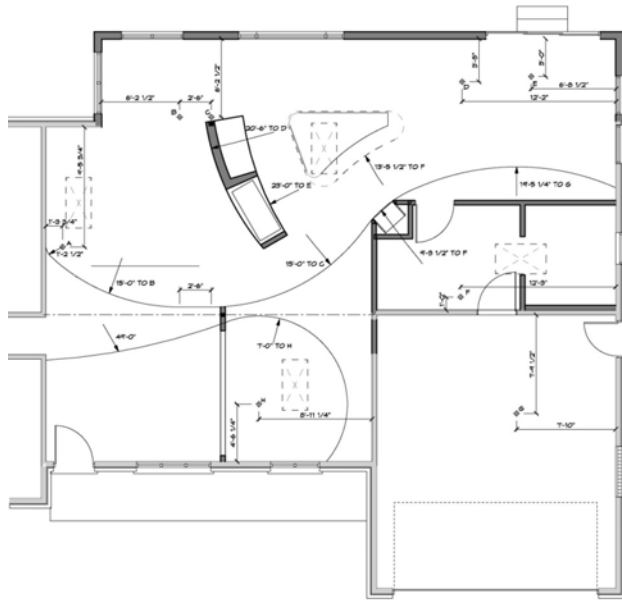


DINING ROOM

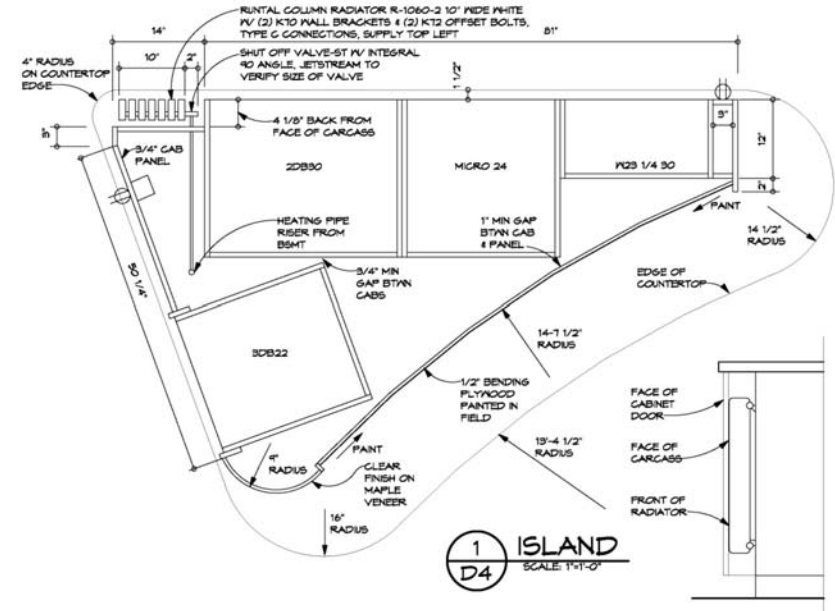


The old exterior wall (photo at left) was removed and the space was enlarged into the old screened porch beyond. The dining room was placed in this corner– great outside views, great daylight, and wide open to the kitchen. The bold colors for the interior were designed to evoke the Caribbean.

CONSTRUCTING THE MANY CURVES



All curves were laid out on our CAD drawings. Top and bottom plates for the curved walls and soffits were then cut on our CNC router machine for ease and accuracy as many layout points for the curves were outside of the building.



The island, 9' x 6', required precision in fabrication to fit all the desired cabinetry, the hot water radiator, the curved veneers, and to align with the room. Cabinetry parts were cut on our CNC router based on our detailed drawings.



FAMILY ROOM



Before



The serpentine soffits conceal structural beams and lighting and provide an elegant and delightful way of connecting separate spaces together. The main path from the bedroom wing to the kitchen follows the dominant curve.

HEART OF THE HOME



The new heart of the home— an inspiring kitchen space, clean and simple modern style. Cool colors and a warm heart.