

Nature Park Trails

There are three trails that traverse three different natural areas within the Nature Park. Each area treats you to different terrain and wildlife, allowing you to experience a variety of nature over the 3.26 miles of trail.



Dykeman Walking Trail
0.8 miles ~ Easy

The flat topography of the trail winds around Spring ponds and through wetland areas on both sides of the railroad tunnel.



Dykeman Meadow Trail
1.28 miles ~ Moderate

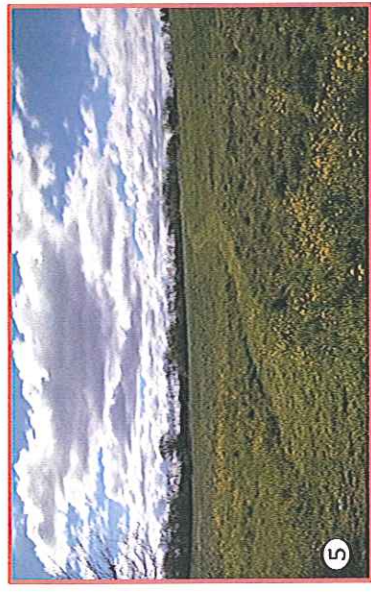
This trail offers great views of the countryside around Shippensburg offers chances to view wildlife.



Dykeman Upland Trail
1.18 miles ~ More Difficult

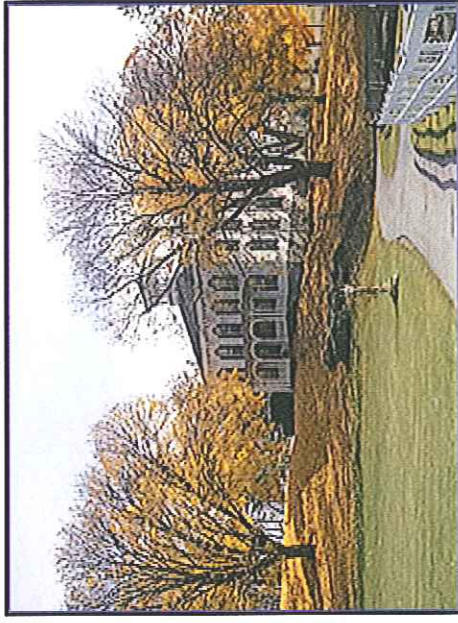
This trail travels through the woods, the meadow, and has some hills. There are benches and tables to take a break and relax

Scenic Spots on the Trails



The Dykeman Spring Nature Trail

Shippensburg, Pennsylvania



Located on the land purchased by George Dykeman in 1870, the Dykeman Spring Nature Park was created through the cooperation between the Cumberland County Land Partnership Program and Shippensburg Borough. The 56-acre park is preserved open space and the 2-acre Dykeman property is listed on the National Register of Historic Places.

