



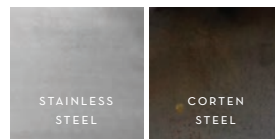
PERSONALIZED FIRE PIT

PERSONALIZED FIRE PITS

The personalized fire pit is constructed of steel or stainless steel that will not warp from the heat. Our matching metal covers make it easy to convert the fire pit into a table when not in use, and the grill attachment allows you to cook over an open flame.



MATERIALS AVAILABLE:



Cor-ten steel will naturally weather and may cause discoloration on some surfaces.

Ways to personalize:

- o Personal Name
- o Special Date
- o Hotel Name
- o Saying or Quote
- o Sports Team
- o Logo
- o Company Name
- o Custom Design

Three fire options:

- o Wood Burning
- o Manual Key Valve
- o Electronic Ignition

Sizes:

28" & 48"

Materials:

- 1/4" Thick Stainless Steel
- 1/4" Thick Steel

Order forms and specifications available at bobewaterandfire.com

PERSONALIZED FIRE PITS

Note: Propane units must be ventilated (see "Fire Add-Ons"). Transformers included.

Steel

	Wood Burning	Manual	Electronic	Fire Pit Covers
28"	RFPFIT-STEEL-28	RFPFITA-STEEL-28	RFPFITC-STEEL-28	RFPFIT-STEELCVR-28
40"	RFPFIT-STEEL-40	RFPFITA-STEEL-40	RFPFITC-STEEL-40	RFPFIT-STEELCVR-40

Stainless Steel

	Wood Burning	Manual	Electronic	Fire Pit Covers
28"	RFPFIT-SS-28	RFPFITA-SS-28	RFPFITC-SS-28	RFPFIT-SSCVR-28
40"	RFPFIT-SS-40	RFPFITA-SS-40	RFPFITC-SS-40	RFPFIT-SSCVR-40

PREFABRICATED FIRE PIT KITS

Manual Key Valve

Propane units must be ventilated. Prefabricated fire pits are measured by the O.D. of the perforated aluminum structure.

Automatic Ignition

Propane units must be ventilated. Prefabricated fire pits are measured by the O.D. of the perforated aluminum structure.

	Square		Round			Square		Round	
	Copper	Stainless Steel	Copper	Stainless Steel		Copper	Stainless Steel	Copper	Stainless Steel
36"	FPSCA-36	FPSSA-36	RFPSCA-36	RFPSSA-36	36"	FPSCC-36	FPSSC-36	RFPSCC-36	RFPSSC-36
48"	FPSCA-48	FPSSA-48	RFPSCA-48	RFPSSA-48	48"	FPSCC-48	FPSSC-48	RFPSCC-48	RFPSSC-48
60"	FPSCA-60	FPSSA-60	RFPSCA-60	RFPSSA-60	60"	FPSCC-60	FPSSC-60	RFPSCC-60	RFPSSC-60

FIRE PIT INSERT KITS

Manual Key Valve

Propane units must be ventilated (see "Fire Add-Ons").

Automatic Ignition

Propane units must be ventilated (see "Fire Add-Ons").
Transformers sold included.

	Square		Round			Square		Round	
	Copper	Stainless Steel	Copper	Stainless Steel		Copper	Stainless Steel	Copper	Stainless Steel
24"	FPSCIOA-24	FPSSIOA-24	FPSCIOA-24	FPSSIOA-24	24"	FPSCIOC-24	FPSSIOC-24	RFPSCIOC-24	RFPSSIOC-24
36"	FPSCIOA-36	FPSSIOA-36	FPSCIOA-36	FPSSIOA-36	36"	FPSCIOC-36	FPSSIOC-36	RFPSCIOC-36	RFPSSIOC-36
48"	FPSCIOA-48	FPSSIOA-48	FPSCIOA-48	FPSSIOA-48	48"	FPSCIOC-48	FPSSIOC-48	RFPSCIOC-48	RFPSSIOC-48

Fire Add-Ons

Note: Propane units must be ventilated. Transformers included.

Vent Collar

VC-SM	VENT COLLAR FOR BOWLS SIZE 28" AND SMALLER (VENTILATION FOR PROPANE UNITS)
VC-LG	VENT COLLAR FOR BOWLS SIZE 29" AND LARGER (VENTILATION FOR PROPANE UNITS)

Material Add-Ons

Note: Powder coats are applied to stainless steel products.

MIDNIGHT	MATTE BLACK POWDER COAT
TERRA	SPECKLED BROWN POWDER COAT
SLATE	COOL GREY POWDER COAT
WALNUT	DARK BROWN POWDER COAT