

now playing



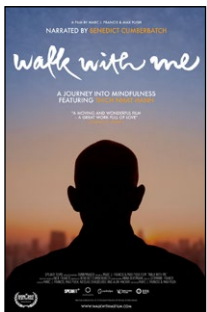
LADY BIRD (R)

SHOWTIMES:

FRI. DEC 1	5:00, 7:30 P
SAT. DEC 2	3:30, 6:00, 8:30 P
SUN. DEC 3	2:30, 5:00, 7:30 P
MON. DEC 4	4:45, 7:15 P
TUES. DEC 5	2:30, 5:00 P
WED. DEC 6	5:00, 7:30 P
THURS. DEC 7	4:00 P

Christine "Lady Bird" McPherson (Saoirse Ronan) fights against, but is exactly like her wildly loving, deeply opinionated, and strong-willed mom (Laurie Metcalf), a nurse working tirelessly to keep her family afloat after Lady Bird's father (Tracy Letts) loses his job. Set in Sacramento, California in 2002, amidst a rapidly shifting American economic landscape, LADY BIRD is an affecting look at the relationships that shape us, the beliefs that define us, and the unmatched beauty of a place called home.

Directed by Greta Gerwig **Featuring** Saoirse Ronan, Laurie Metcalf, Tracy Letts **Running Time** 1 hr 33 mins



WALK WITH ME (NR)

SHOWTIMES:

TUES. DEC 5	7:30 P*
-------------	---------

WALK WITH ME goes deep inside a Zen Buddhist community whose adherents have given up all their possessions and signed up to a life of chastity to transform their suffering and practice the art of mindfulness with the world-famous Thich Nhat Hanh.

* Jeanne Anselmo and members of the Plum Village Tradition Zen Buddhist community will be hosting a post-screening film discussion, www.greenislandsangha.org.

Directed by Marc J. Francis, Max Pugh **Featuring** Benedict Cumberbatch **Running Time** 1 hr 28 mins



THE 19TH ANNUAL ANIMATION SHOW OF SHOWS (NR)

SHOWTIMES:

SAT. DEC 2	10:30 A*
THURS. DEC 21	7:30 P**

The ANIMATION SHOW OF SHOWS returns to theaters across North America this fall, presenting 16 exceptional and inspiring animated shorts from around the world. At a time of increasing social instability and global anxiety about a range of issues, the works in this year's show have a special resonance, presenting compelling ideas about our place in society and how we fit into the world.

* Q&A with curator Ron Diamond via Skype
** Q&A with Prof. Jennifer Gagliardi & Anthony Pampinella

Curated by Ron Diamond **Running Time** TBA



STAGE IN CINEMA WHO'S AFRAID OF VIRGINIA WOOLF? (NR)

SHOWTIMES:

THURS. DEC 7	6:30 P*
SAT. DEC 16	10:30 A**

In the early hours of the morning on the campus of an American college, Martha, much to her husband George's displeasure, has invited a new professor and his wife to their home for some after-party drinks. As the alcohol flows and dawn approaches, the young couple is drawn into George and Martha's toxic games until the evening reaches its climax in a moment of devastating truth-telling.

* Thursday night wine and cheese from The Cheese Patch!
** Saturday morning brunch from Goldberg's Famous Bagels!

Directed by James McDonald **Starring** Imelda Staunton, Conleth Hill, Luke Treadaway **Running Time** 3 hrs 30 mins (includes interval)
General Admission: \$15 • **Students:** \$12 • **Members:** \$11

upcoming films

- HUMAN FLOW (12/9 & 12/14)
- THREE BILLBOARDS OUTSIDE EBBING, MO
- ANIMATION WORKSHOPS (12/27, 12/28, 12/29)



www.PlazaMAC.org

THE BOX OFFICE OPENS 1-HOUR BEFORE THE FIRST SHOW OF THE DAY AND CLOSSES AFTER THE LAST SHOW.

The Plaza Cinema & Media Arts Center is a non-profit 501(c)(3) community supported organization. This means that there are no shareholders and that all monies are used to fund operations, programming, and capital campaigns.