



now playing



WON'T YOU BE MY NEIGHBOR? (PG-13)

SHOWTIMES:

FRI. JULY 6	5:00, 7:30 P
SAT. JULY 7	3:30, 6:00, 8:30 P
SUN. JULY 8	2:15, 4:45, 7:15 P
MON. JULY 9	5:00, 7:30 P
TUES. JULY 10	2:30, 5:00, 7:30 P
WED. JULY 11	5:00, 7:30 P
THURS. JULY 12	4:00 P

From Academy Award-winning filmmaker Morgan Neville (*20 Feet from Stardom*), *WON'T YOU BE MY NEIGHBOR?* takes an intimate look at America's favorite neighbor: Mister Fred Rogers. A portrait of a man whom we all think we know, this emotional and moving film takes us beyond the zip-up cardigans and the land of make-believe and into the heart of a creative genius who inspired generations of children with compassion and limitless imagination.

Directed by Morgan Neville **Featuring** Fred Rogers
Running Time 1 hr 34 mins

upcoming film series and classes

FILM SERIES

- **The Cineaste:** Hereditary (7/19 & 8/2)
- **Stage in Cinema:** A Woman of No Importance (8/9 & 8/19)

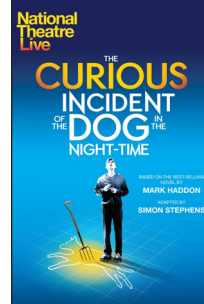
FILM CLASSES

- Summer Animation Classes (classes start 7/9)
- Film Editing Workshop (classes start 7/23)



www.PlazaMAC.org

now playing



PERFORMING ARTS IN CINEMA (PAiC) THE CURIOUS INCIDENT OF THE DOG IN THE NIGHTTIME

SHOWTIMES:

THURS. JULY 12	6:30 P*
SUN. JULY 22	10:30 A**

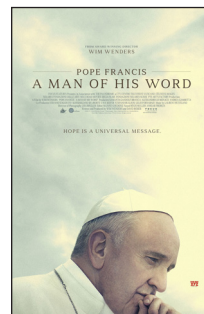
Captured live from the National Theatre in London, this critically acclaimed production directed by Marianne Elliott has astonished audiences around the world and has received seven Olivier and five Tony Awards. Christopher, fifteen years old, stands beside Mrs Shears' dead dog. It has been speared with a garden fork, it is seven minutes after midnight, and Christopher is under suspicion. He records each fact in the book he is writing to solve the mystery of who murdered Wellington. He has an extraordinary brain, exceptional at math, while ill-equipped to interpret everyday life. He has never ventured alone beyond the end of his road, he detests being touched, and he distrusts strangers. But his detective work, forbidden by his father, takes him on a frightening journey that upturns his world.

* Thursday night wine & cheese from *The Cheese Patch*
** Sunday brunch from *Goldberg's Famous Bagels*

Directed by Marianne Elliott **Starring** Luke Treadaway, Niamh Cusack, Paul Ritter, Nicola Walker **Running Time** 2 hrs 50 mins

PAiC PRICING: General \$15 • Students \$12 • Members \$11

coming soon



POPE FRANCIS - A MAN OF HIS WORD (PG) COMING SOON

Wim Wenders' new documentary, *POPE FRANCIS - A MAN OF HIS WORD*, is intended to be a personal journey with Pope Francis rather than a biographical documentary about him. The pope's ideas and his message are central to this documentary, which sets out to present his work of reform and his answers to today's global questions. From his deep concern for the poor and wealth inequality to his involvement in environmental issues and social justice, Pope Francis engages the audience face-to-face and calls for peace.

Directed by Wim Wenders **Featuring** Pope Francis
Running Time 1 hr 36 mins

THE BOX OFFICE OPENS 1-HOUR BEFORE THE FIRST SHOW OF THE DAY AND CLOSSES AFTER THE LAST SHOW.

