



now playing



THE CATCHER WAS A SPY (R)

SHOWTIMES:

FRI. JULY 13	5:00, 7:30 P
SAT. JULY 14	3:30, 6:00, 8:30 P
SUN. JULY 15	2:15, 4:45, 7:15 P
MON. JULY 16	5:00, 7:30 P
TUES. JULY 17	2:30, 5:00, 7:30 P
WED. JULY 18	5:00, 7:30 P
THURS. JULY 19	5:00 P

In the midst of World War II, major league catcher Moe Berg (Paul Rudd) is drafted to join the Office of Strategic Services. No ordinary ballplayer, the erudite, Jewish Ivy League graduate speaks nine languages and is a regular guest on a popular TV quiz show. Despite his celebrity, Berg is an enigma—a closeted gay man with a knack for keeping secrets. The novice spy is quickly trained and sent into the field to stop German scientist Werner Heisenberg before he can build an atomic bomb for the Nazis.

Directed by Ben Lewin **Featuring** Paul Rudd, Mark Strong (II), Sienna Miller **Running Time** 1 hr 38 mins



THE CINEASTE HEREDITARY (R)

SHOWTIMES:

THURS. JULY 19	7:30 P*
THURS. AUG 2	7:30 P**

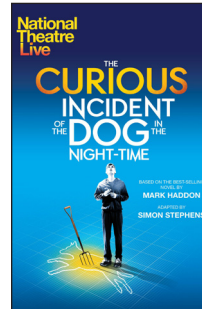
After the family matriarch passes away, grieving family members are haunted by tragic and disturbing occurrences and begin to unravel dark secrets.

* Post-screening film discussion with Prof. Peter Mascuch

** Post-screening film discussion with Jennifer Gagliardi

Directed by Ari Aster **Starring** Toni Collette, Milly Shapiro, Gabriel Byrne **Running Time** 2 hrs 7 mins

coming soon



PERFORMING ARTS IN CINEMA (PAiC) THE CURIOUS INCIDENT OF THE DOG IN THE NIGHTTIME

SHOWTIMES:

SUN. JULY 22	10:30 A*
--------------	----------

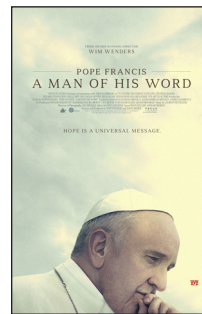
Captured live from the National Theatre in London, this critically acclaimed production directed by Marianne Elliott has astonished audiences around the world and has received seven Olivier and five Tony Awards.

Christopher, fifteen years old, stands beside Mrs. Shears' dead dog. It has been speared with a garden fork, it is seven minutes after midnight, and Christopher is under suspicion. He records each fact in the book he is writing to solve the mystery of who murdered Wellington. He has an extraordinary brain, exceptional at math, while ill-equipped to interpret everyday life. He has never ventured alone beyond the end of his road, he detests being touched, and he distrusts strangers. But his detective work, forbidden by his father, takes him on a frightening journey that upturns his world.

* Sunday brunch from Goldberg's Famous Bagels

Directed by Marianne Elliott **Starring** Luke Treadaway, Niamh Cusack, Paul Ritter, Nicola Walker **Running Time** 2 hrs 50 mins

PAiC PRICING: General \$15 • Students \$12 • Members \$11



SPECIAL PRESENTATION POPE FRANCIS - A MAN OF HIS WORD (PG)

SHOWTIMES:

THURS. JULY 26	7:30 P*
SUN. AUG 5	10:30 A**

The pope's ideas and his message are central to this documentary, which sets out to present his work of reform and his answers to today's global questions.

From his deep concern for the poor and wealth inequality to his involvement in environmental issues and social justice, Pope Francis engages the audience face-to-face and calls for peace.

* Guest speaker Dr. Tom Petriano, St. Joseph's College

** Guest speaker Cristian Murphy, St. Joseph's College

Directed by Wim Wenders **Featuring** Pope Francis
Running Time 1 hr 36 mins



www.PlazaMAC.org

THE BOX OFFICE OPENS 1-HOUR BEFORE THE FIRST SHOW OF THE DAY AND CLOSSES AFTER THE LAST SHOW.



The Plaza Cinema & Media Arts Center is a non-profit 501(c)(3) community supported organization.



This means that there are no shareholders and that all monies are used to fund operations, programming, and capital campaigns.