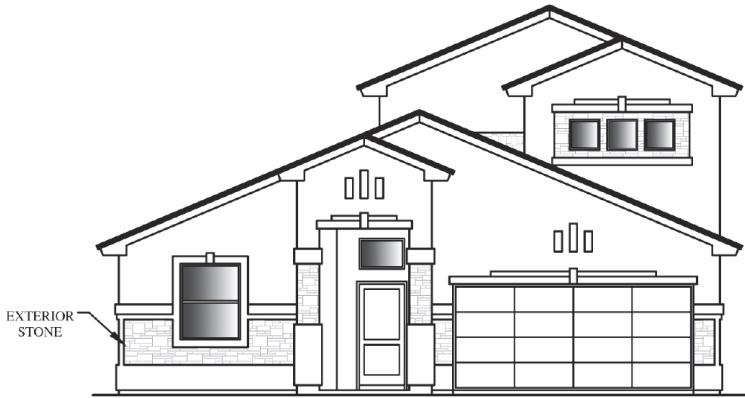


Windsor II

2,379 SQ. FT.



ELEVATION A



ELEVATION B



ELEVATION C

In a continuing effort to improve our product, Definitive Homes reserves the right to make changes or modifications to floor plans, specifications, materials, features and colors without notice. Window styles, availability, sizes and locations as well as ceiling heights and vaults and livable square footage will vary with choice of exterior elevations. All floor plans and lot square footages are approximate only. Total plan square footage calculations are from the outside of exterior walls and include interior partition walls. Optional features may be included at additional costs and are subject to construction cutoff dates. Lot premiums and HOA fees may apply. All maps, plans, landscaping and elevation renderings are artists' conceptions. This presentation constitutes intellectual property of Definitive Homes. Any copying, reproduction or use of this information without the written authorization of Definitive Homes is strictly prohibited. Prices are subject to change without notice. Consult a Sales Associate for additional information.

6.9.17

AVIATOR TRAILS

www.DefintiveHomesEP.com



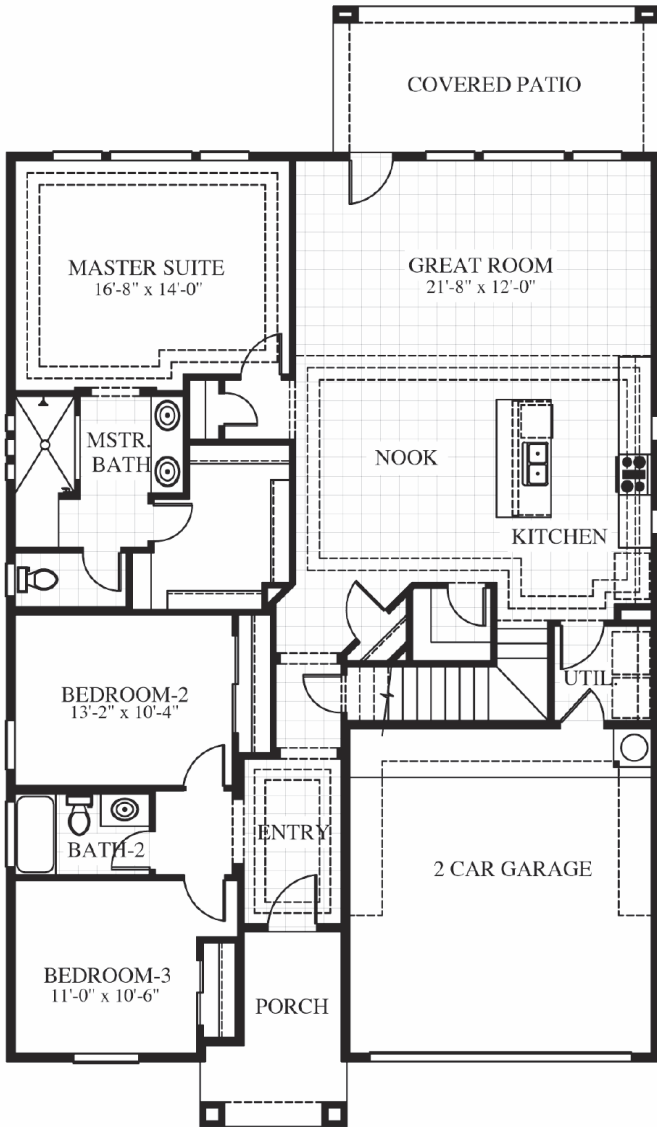
DEFINITIVE
Homes

DEFINING QUALITY, EXCELLENCE AND VALUE

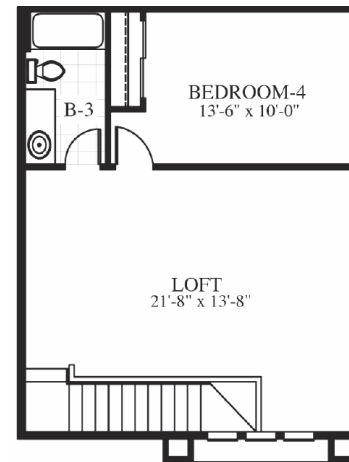
Windsor II

2,379 SQ. FT.

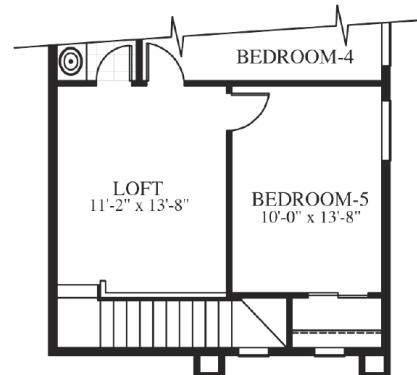
- Two-Story ■ 4 Bedrooms ■ 3 Baths
- Great Room ■ Loft ■ Utility Room
- Covered Patio ■ 2-Car Garage
- Options: ■ Loft to Bedroom 5
- Kitchen Island



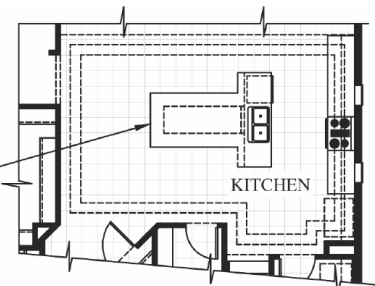
FIRST FLOOR



SECOND FLOOR



LOFT TO BEDROOM 5



KITCHEN ISLAND

OPTION 1: CABINET
FINISH WITH STORAGE
OPTION 2: STONE VENEER
FINISH WITH NO STORAGE



DEFINITIVE
Homes

DEFINING QUALITY, EXCELLENCE AND VALUE