

KOWHAI

INTERMEDIATE SCHOOL

PROSPECTUS 2017



Principal's welcome

Welcome and warm greetings to all parents and students considering enrolment at Kowhai Intermediate for 2017.

Kowhai is a unique school perfectly positioned to prepare your child for the opportunities, challenges and responsibilities that lie just ahead. The diverse composition of our school community and our location at the heart of Auckland City means that we are living at the forefront of change.

Our vision is to prepare and enable our students to step confidently into the future as well rounded individuals. This vision is well supported by our strong sense of school culture, values and teaching programmes.

We know the needs of this age group and our programmes reflect this. We know learning must be meaningful, it must be challenging, it must be fun and it must be viewed from a student perspective.

At Kowhai we know that student achievement is strengthened by strong partnerships between home and school so we look forward to the opportunity of working with you, in strong partnership, over the next two years.

I look forward to answering any of your queries and encourage you to visit the school, attend our open evening or one of our open days.

Louise Broad
Principal

OUR VISION

We learn. No exceptions.

Ka ako mo ake tonu atu.

E leai se 'Alofaga o le Ola A'oa'oina

Our students will step confidently into the future,
as well rounded individuals.

WE VALUE

Whanau

We include everyone We work together

We look after each other

Respect

Respect our diversity Respect our environment

Respect Te Tiriti o Waitangi

Learning

Personalised learning Fun and challenge Celebration of successes

Confidence

Confident in ourselves Confident in each other

Confident to try new things

Fairness

We are honest We do what is right We listen to each other

SCHOOL PROVERB

Ko taku toa he toa takitini.

My strength comes from my whanau and those who came before me.

Kowhai Intermediate School 2016 ERO Report

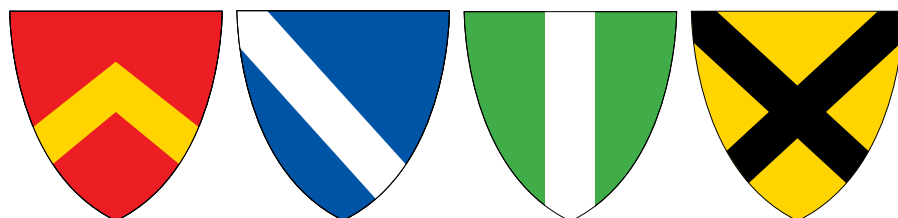
For our latest excellent report by the Education Review Office, visit www.ero.govt.nz





Our history and traditions

Kowhai Intermediate was established in October 1922 and is New Zealand's first intermediate school. In keeping with the school's tradition, students join one of the four school houses of Burns, Garrard, Parr and Rudman. Students collect points for their house through their involvement in school life and for maintaining school values. The school also continues the tradition of formal assembly. Classes take turns to lead the assembly and parents are welcome to attend.



Contents

Five priorities at Kowhai	4
What will I learn at Kowhai?	6
Our curriculum	6
Talent development and extension programmes	6
Learning support	6
Information and communication technologies – ICT	7
Our bilingual learning units	7
What can I do outside the classroom?	8
Sports programmes	8
Intermediate sports camp	8
Trent Bray Swim School	8
Camps, trips and adventures	8
What can I do creatively at Kowhai?	10
Performing arts	10
Technology	10
Visual arts	11
More things to know about Kowhai?	12
Student behaviour	12
Healthy students and a healthy school community	12
Student involvement and leadership	12
Staying in touch	12
Stationery	13
Canteen	13
Health care	13
Sick bay	13
Dental clinic	13
How to get here	13
School hours	13
School fees and donations	13
Uniform	14
Enrolment	14
International students	14
Enrolment zone	15
Contact information	16

Five priorities at Kowhai

Learning to learn

Kowhai Intermediate School is committed to teaching children how to learn. We don't see children as empty buckets to be filled up with information. We believe children need to learn how to build up their own understandings.

Quality teachers

The school is staffed by a balance of men and women; teachers with interests and skills and a passion for teaching intermediate-age children. Kowhai teachers use current best teaching practices and engage in regular professional development. It is the teacher that makes the

greatest difference to student achievement and Kowhai teachers know how to inspire and challenge their students to excellence.

Focus on literacies

Literacy and numeracy are twin priorities at Kowhai. There are proven reading, writing and speaking programmes in every class, alongside lessons in understanding and communication in the language of number. Digital literacy is essential so that our students can safely navigate the ocean of ideas, opinions and information available via the internet. Learning others' languages prepares

our children to move between cultures confidently. We aim to produce richly articulate young people in all these literacies.

Personalised learning

Each child comes with their unique collection of experiences, interests and abilities. Our school is set up to identify the needs of individual learners and support individual pathways to development. We personalise your child's education.

Fun with challenge

This is the age to try out new challenges. We cater for this liveliness and inquisitiveness through exciting physical, cultural and creative enrichment, such as camps, competitions and events.





"We are a learning community"

At Kowhai Intermediate School we are all learning – students, staff and whanau – all the time and from each other. Our children are at the centre of this community. Each student will feel secure, appreciated and have a sense of belonging here. Our multi-ethnic school aims to be an example of how New Zealanders of all backgrounds can work and play together. The rich resources, contexts and experiences of our community support the learning of our children. We maintain excellent relationships and communications with our contributing schools and secondary schools, so as to ensure seamless transitions as our students move through their schooling.





What will I learn at Kowhai?

At Kowhai, students have their own classroom and teacher who teaches them most of the curriculum.

Classes are in teams that we call Whanau Whero, Whanau Takahe, Whanau Matau, Whanau Kotuku, Whanau Apārangi and Whanau Pounamu. Each whanau has a mix of separate year 7 and year 8 classes so that students from both levels get to know each other.

The lead teacher of each Whanau is a member of the Kowhai leadership team.

Each week, classes spend some periods with specialist teachers, who teach technology, ICT and media, visual art, music and performing arts.

Our curriculum

Kowhai's curriculum follows all the learning areas of the New Zealand curriculum:

- ★ English
- ★ Mathematics
- ★ Science

- ★ Social sciences
- ★ Health and physical education
- ★ Technology
- ★ The arts
- ★ Second languages

Talent development and extension programmes

Every class has a streamed programme in English and mathematics to ensure that students are challenged to excel. Our social inquiry learning allows students to go deeper in areas of study that interest them. Talent Development modules offer a variety of enrichment opportunities that students can select in academic subjects and the arts.

We encourage gifted students to take part in the International Competitions and Assessments for Schools (ICAS) examinations in a range of curriculum areas. Students with high level abilities can tackle Otago University Maths (a termly

problem-solving challenge) and the annual Mathex competition. For avid readers there is the Auckland Lit Quiz competition.

Extension programmes in literacy and numeracy also cater for small groups of students who have exceptional abilities.

Future Problem Solving (FPS) is also offered at Kowhai. FPS is a highly regarded and well-researched international educational programme that develops creative, critical and caring thinking skills. Each year at Kowhai, groups either enter the stepping stones programme or the competitive programme.

Learning support

Kowhai Intermediate is an inclusive school where students with special needs are integrated into mainstream classes with appropriate support. Kowhai has a learning support centre, the Totara Room, where an experienced teacher provides targeted instruction for students using such resources as Learning Staircase (a computer-based literacy programme).





Information and communication technologies – ICT

ICT tools and resources are used across the curriculum, including portable devices, desktop computers and data projectors for each class. There is a school-wide wireless network and Google Apps are used by students in their daily learning. Each student has a Google account for learning.

In 2017 we request that our Y7 students bring their own device (chrome book) to school.

If a student does not own a chrome book the school will have chrome books available for intermittent use.

Our bilingual learning units

Kowhai operates two special programmes.

Te Whanau Pounamu – Maori

Te Whanau Pounamu is a parallel pathway of learning that is underpinned by Tikanga Maori and is delivered through Te Reo Maori. Graduates of Te Whanau Pounamu are empowered culturally with a strong sense of identity and are competent, confident and connected lifelong learners.

Toku reo toku ohooho

Toku reo toku mapihi maurea

Toku reo toku whakakai marihi

Ahakoia he iti, he iti Pounamu.

Gāfoa le Ata – Samoan

Gāfoa le Ata – *The Break of Dawn*, is our Samoan bilingual class, for students whose Samoan heritage and language is acknowledged and incorporated into their everyday learning. The class programme follows the New Zealand curriculum with a clear focus on biliteracy in both Samoan and English. Our philosophy is guided by three principles: language, identity and support, and aims to significantly improve our students' academic achievements and personal growth. Students with prior Samoan language experience are preferred; however we welcome enquiries from all interested families. Students must

undertake a language assessment to meet language competency and participate in an interview before being accepted

O Gāfoa le Ata o se vasega e fa'aogaina ai gagana e lua (Fa'aperetania ma le Fa'aSamoa) e a'oaoina ai matupu eseese. O leni vasega o se vasega e tu'u fa'atasia ai le tausaga fitu ma le tausaga valu.

O lo'o mulimulita'i polokalame a leni vasega i Ta'iala o a'oa'oga a Niu Sila. O leni vasega e talafeagai lea mo tamati uma o lo'o mafai ona tautala ma tusitui i le Gagana Samoa, pe i ai foi se silafia i le gagana. E lē taofia ai lou susu mai e fa'atalatalanoa se avanoa mo lou alo pe a fia auai ai i leni vasega.





What can I do outside the classroom?

Sports programmes

Kowhai has a strong and successful sporting tradition and students can trial for school representative teams in many different sports. We compete in the following sports:

★ Athletics, cross country, swimming, cricket, softball, touch rugby, tennis, volleyball, basketball, netball, soccer, rugby sevens, hockey, league, table tennis and futsal.

Team practices often occur before or after school, supervised by teachers or coaches. A fitness club meets before school during the year, catering for students interested in improving their performance at a competitive level. Girls' netball teams compete in a Saturday morning inter-school competition. Boys and girls compete in the mid-week basketball competition at Unitec. Inter-house and inter-whanau sporting and games competitions involving the whole school, occur throughout the year.

Intermediate sports camp

Up to fifty of our top sports people compete at the week-long Intermediate Sports Camp held in Matamata each year. Our most talented sports students test themselves in a wide range of disciplines. The Kowhai Intermediate School team has won the championship title for the past four years.

Trent Bray Swim School

We have a special relationship with the Trent Bray Swim School. This modern indoor heated pool complex is situated on our school grounds. Kowhai Intermediate students have year-round access to the pool and the swim school's top quality instructors.

All students have the opportunity to take part in swimming instruction for at least two terms of the year. Students access this programme free of charge. Kowhai club and competitive swimmers use the pool all year for training under the swim school's instruction.

Camps, trips and adventures

Learning at Kowhai includes camps, adventure days and field trips. Over their two years here, students attend a school camp and a Marae experience.

The William Pike Challenge Award is offered at Kowhai and is a great opportunity for our students to engage in adventurous opportunities, develop life skills and get involved with their local community.

Up to 28 students can attend our annual snow camp, staying a week in a lodge on Mt Ruapehu. Adventure days provide outdoor challenges such as mountain-biking, sailing or other outdoor activities. Science and social studies learning sometimes includes field trips and other opportunities to engage with the world outside school.

The school assists students with fundraising activities to help manage the cost of some camps.



What can I do creatively at Kowhai?

Performing arts – dance, drama and music

Adolescent students are drawn to taking risks with their growing bodies and minds. The performing arts give our students opportunities to explore their new capabilities. We have specialist dance, drama and music teachers. Students can start a new musical instrument, or build on their skills. Students can learn a new instrument by taking lessons from itinerant music teachers during school time, at a modest cost. The Kowhai Intermediate Kapa Haka

group competes each year and also performs for the school and parents. Our performing arts teachers seek opportunities within the community to give students valuable learning experiences, from artistic collaborations with professional performers to competitions. The annual variety show allows students to perform in public, and parents to watch their children's talents grow.

Refer to our website for examples of some of the performing arts opportunities available at Kowhai. www.kowhai.school.nz

Technology – working with metals, foods, electronics, textiles and structures

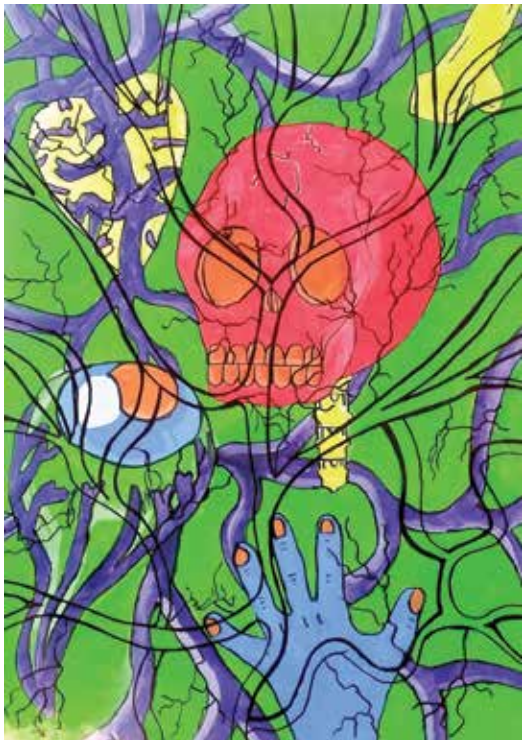
In our technology studios, students explore existing technologies before developing their own ideas under the guidance of specialist teachers. The focus is on hands-on learning whether creating pieces of jewellery, 3D printing or creating a nutritious meal.

Each year, students complete a 50-hour course in technology. Browse the Kowhai School website for photos of our work, including a video showcasing our own mechanical toys.



Visual arts – experimenting with media

Our specialist visual arts teacher develops students' expressive and creative talents by producing exciting objects and images in a variety of media. Student art is displayed at Auckland intermediate school art exhibitions. Many families frame or display their children's artworks for their home decor. Examples of student work can be found on the Kowhai school website photo gallery.





More things to know about Kowhai

Student behaviour

Students are expected to take responsibility for their behaviour. We expect to support them with encouragement, advice and discipline. Our main focus is affirming and encouraging excellent behaviour, while maintaining fair consequences for poor behaviour.

The Principal and the Associate Principal consider their time well spent understanding reasons for inappropriate behaviour and putting programmes in place to help students make positive changes. We abide by the school's Guiding Principles and the following school rules:

- ★ Respect others and yourself.
- ★ Always do your best and allow others to do their best.
- ★ Be in the right place at the right time.
- ★ Look after the school and all property.
- ★ Be responsible for your own things, including uniform.

The school has positive behaviour initiatives, such as the weekly Whizz

Kids prize draw, where students put names and good actions into a weekly draw for a small prize.

Healthy students and a healthy school community

Kowhai Intermediate School is a member of the Health Promoting Schools programme. Student voice is crucial to successful health promotion, so students are consulted via the HPS team, the school council, surveys and an open door to the school management. In this way, students are empowered to take responsibility for the well-being of the school community. They can take part in the Health Committee with the Public Health Nurse, the Associate Principal and visiting experts, to plan projects which positively influence the health of students.

Students have organised such events as a cultural day where the school was able to showcase their own culture through dress, food and performance, and a sushi day where students prepared and sold sushi as a healthy lunch option. (Visit our

website www.kowhai.school.nz to see galleries of such events.)

Student involvement and leadership

Leadership is encouraged by providing many layers of opportunities. For example, each class has a representative and deputy on the school council; the HPS committee involves representatives from every class, each of the four houses have leaders and deputies, many students are involved as captains of the many sports played at Kowhai, 'tech angels' are ICT-savvy students who assist organising our ICT resources, school assemblies are led by students; numerous fundraisers, charity and social events are all led by students, and each year new ideas emerge from our students about ways to serve the school.

Staying in touch Meet your teacher

Parents are encouraged to contribute to their child's learning goals throughout the year. They



are invited to meet teachers together with their child early in Term 1 to map learning goals and again in Term 2 to discuss progress and review these goals. Parents are welcome to contact their child's class teacher or the Principal and Associate Principal at any time to discuss their child's well-being and progress. Meetings can be arranged at a time that is convenient for all parties.

Newsletters and reports

★ Student portfolios contain assessed pieces of work and come home at the end of Terms 2, 3 and 4.

★ Newsletters are distributed on a fortnightly basis

★ Teachers will maintain weekly homework expectations to all students and parents by email. We encourage parents to communicate with classroom teachers by email. Phone messages may be left with the school office.

School website

Our school website www.kowhai.school.nz and google calendar keeps you up to date with school wide events. Curriculum updates are posted each term so that parents can track what students are learning each term.

Stationery

Stationery packs can be purchased from the school office at the beginning of the school year.

Canteen

Lunches may be ordered on line through the link on our web page. Lunches will be delivered to the classroom. The canteen is also open during morning interval.

Health care

A public health nurse visits the school throughout the school year. She sees any students with health problems and follows up hearing and vision tests. She administers

the immunisation programme with parental consent. Students can refer themselves to the Health Nurse and she will keep parents advised and seek consent where necessary. *Contact: Public Health Nurse, telephone (09) 639 0200 ext 2749.*

Sick bay

Our office staff members hold current First Aid Certificates. Unless it is a minor matter, if your child is hurt or becomes ill a member of staff will contact you. In case of an emergency our staff will call an ambulance and advise you urgently.

Please remember to keep your contact details current with the school and ensure we have an alternative contact number in case we are unable to reach you.

Dental clinic

The mobile school dental clinic visits once a year.

Contact: Dental Clinic, 19 Brixton Road, Mt Eden, telephone (09) 623 4537.

How to get here

We recommend students travel to and from school with others. If your child must come to school by car, please take care not to stop or park illegally.

Bus and train

We are well served by public transport. The Principal visits the Kingsland train station after school to monitor safety. It is your responsibility to ensure your child understands how to behave safely in and around public transport.

Own wheels

We encourage students to cycle, scooter or walk to school. Appropriate safety helmets must be worn and you must ensure your child knows the safest route to and from school. Bicycle racks and a lock-up scooter shed are available to store bikes and scooters during the day.

SCHOOL HOURS

All students in school	8.30am
School begins	8.45am
Interval	10.20 - 10.45am
Lunch break	12.00 - 12.15pm
Afternoon break	1.10 - 1.50pm
End of school	3.00pm

School Office hours

Monday to Friday 8am – 4.00pm

Lateness or absence

Late students report to the School Office to collect a late pass. If your child is absent or late for any reason you must phone the school, or email absentees@kowhai.school.nz

The School Office will notify you by text message if your child is absent without a reason.

In the event of your family taking an extended holiday inside of the school year, application must be made in writing to the Principal, to withdraw your child from class.

School Office telephone

(09) 846 7534

SCHOOL DONATION

Annual curriculum donation per family \$300

Two or more pupils per family \$450

This contribution to school funds provides resources not funded by the Government and includes 'take home' items such as artworks or technology projects.

Walking

If your child walks to school independently make sure he or she knows where and how to use the controlled crossings on the way to school.





Enrolment

In order to plan our classes for 2017, we encourage you to enrol your child by the end of term 3.

It is likely that we will hold a ballot for a limited number of enrolments in 2017. The Board of Trustees will advise the number available, in term 3. Applications for out of zone enrolments for both mainstream and special programmes closes on 12 October 2017. The ballot date for out of zone enrolments is 19 October 2017.

International students

Kowhai welcomes international students. We place international students in mainstream classes with local students and provide withdrawal classes to teach oral and written English.

A designated adult who sees to their pastoral care, and ensures that their accommodation is safe and happy, supports our international students.

Enrolment as an international student is made through the Principal. International student packs are available from the school office.

Uniform

Students must wear school uniform at all times during the school day and when travelling to and from school.

GIRLS a navy monogrammed polo shirt, maroon monogrammed sweatshirt, navy and maroon plaid culottes or navy shorts, plain white ankle socks.

Terms 2 and 3 (optional) long-sleeved plain navy skivvy, monogrammed heavy zip-up fleece, long plain navy trousers, black tights, monogrammed navy rain jacket.

BOYS a navy monogrammed polo shirt, maroon monogrammed sweatshirt, navy shorts, long black socks.

Terms 2 and 3 (optional) long-sleeved plain navy skivvy, monogrammed heavy zip-up fleece, long plain navy trousers, monogrammed navy rain jacket.

FOOTWEAR plain black leather lace-up shoes **Terms 2 and 3** (optional) black or brown leather sandals.

SUN HATS **Terms 1 and 4** plain navy cap or bucket hat.

PE UNIFORM gold and navy monogrammed top and PE shorts.

SWIMMING regulation swimming attire will be needed in **Terms 2 and 3**.

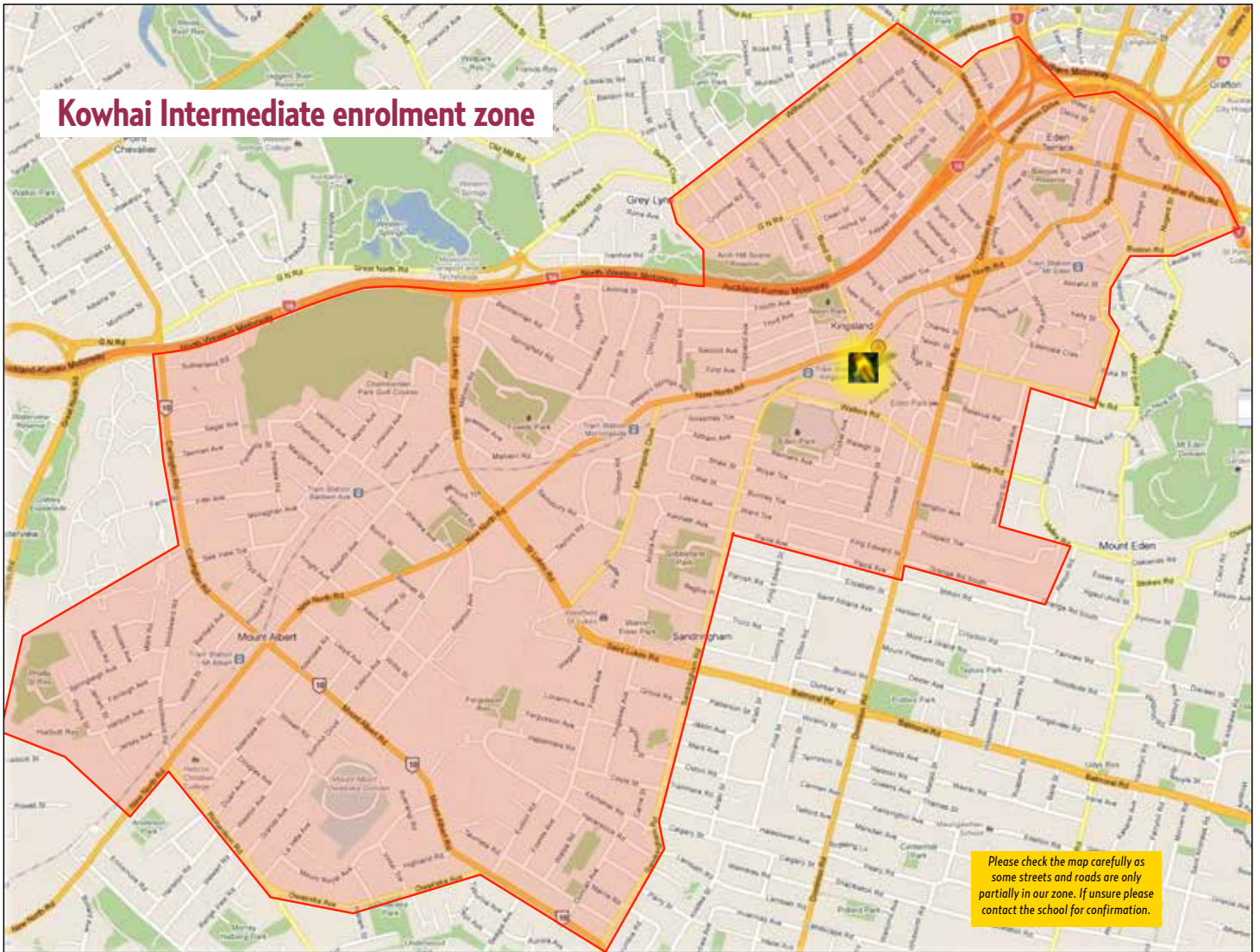
SPORTS TEAMS representing the school may wear a plain navy blue tracksuit when attending sporting events.

JEWELLERY a single stud in each ear and/or a watch.

HAIR long hair must be tied back during technology classes with a plain navy or black hair tie.

UNIFORM CAN BE PURCHASED from The Warehouse, 7 Wagener Place, Mt Albert (opp Westfield St Lukes). Phone 09 846 9534.

Kowhai Intermediate enrolment zone



Please check the map carefully as some streets and roads are only partially in our zone. If unsure please contact the school for confirmation.

- | | | | | | | | |
|--|---|--|--|---|--|--|--|
| Abbey St
Ace Pl
Aitken Tce
Akepiro St
Akiraho St
Alberton Ave
Alderley Rd
Alex Evans St
Alexander St
Alexis Ave
Allendale Rd
Altham Ave
Amandale Ave
Ambrose St
Arawa St
Argyle St
Arika St from
Williamson Ave to
Great North Rd
Aroha Ave
Asquith Ave
Auburn St
Avenham Walk
Baldwin Ave
Bannerman St
Basque Rd
Beaconsfield St
Begbie Pl
Bellevue Rd from
Dominion Rd to
Horoka Ave
Bellwood Ave
Benfield Rd
Bennett St
Bond St
Boston Rd
Bournemouth Rd
Braemar Tce
Brentwood Ave
Brewster Rd
Bright St
Brisbane St
Buchanan St
Burch St
Burgoyne St
Burleigh St
Burnley Tce
Burns St | Burnside Rd
Burton St
Camden Rd
Cardigan St
Cargill St
Carrick Pl
Carrie St
Carrington Rd
Caughy Pl
Central Rd
Challinor Cres
Chapman St
Charlotte St
Chatham Ave
Cobden St
Coleridge St from
Williamson Ave to
Great North Rd
Collins St
Commercial Rd
Conway Rd
Cooper St
Copeland St
Cornwallis St
Couldry St
Counsel Tce
Coyle St
Cricket Ave
Cromwell St
Crummer Rd
Dacre St
Dean St
Derwent St
Devon St
Diamond St
Dolph St
Dominion Rd from
start (city end) to
Paice Ave
Don Croot St
Doreen Ave
Douglas St
Duart Ave
Duncan Ave
Duncan McLean
Link
Dundonald St
Edenvale Cres | Edenvale Park Rd
Edenvue Tce
Edinburgh St
Elgin St from
Williamson Ave to
Great North Rd
Esplanade Rd
from Mt Eden Rd to
View Rd
Ethel St
Euston Rd
Evelyn St
Ewington Ave
Exeter Rd
Exmouth St
Fairleigh Ave
Fenton St
Fergusson Ave
Ferner Ave
Fifth Ave
Finch St
First Ave
Fleet St
Flower St
Fontenoy St
Fourth Rd
Fowlds Ave
Fowler Ave
France St
Francis Ryan Cl
George St
Glenside Cres
Gordon Rd
Grande Ave
Grange Rd from
Domin Rd to
Henly Rd
Grant Ave
Grayson Ave
Great North Rd
from start (city end)
to Williamson Ave
Grosvenor St
Grove Rd
Guardwell Ave
Gundry St
Hampstead Rd
Harbutt Ave | Harcourt St
Haslett St
Haultoun St
Haverstock Rd
Hazelmere Rd
Hesketh St
Highland Rd
Home St
Horoka Ave
Horopito St
Hulse Ave
Ian McKinnon Dr
Inwood St
Jennings St
Jerram St
Jersey Ave
Jesmond Tce
Kamahi St
Karaka St
Karangahape Rd
from Great North
Rd to Motorway
Overpass Kawaka
St
Kelly St
Kenneth Ave
Kenyon Ave
Keppell St
Kerr Taylor Ave
Khyber Pass Rd
from Symonds St to
Boston Rd
King Edward St
from Paice Ave to
Dominion Rd
King St
Kingsland Ave
Kingsland Tce
Kingsway Ave
Kirk St
Kitchener Rd
Kitenui Ave
Knight Ave
Korari St
Kowhai St
La Veta Ave
Laurel St
Leamington Rd | Leone Tce
Leslie Ave
Levonia St
Linwood Ave
Lisnoe Ave
Lloyd Ave
Locarn Ave
Lyon Ave
MacAulay St
MacKelvie from
Williamson Ave to
Great North Rd
Madeira Lane
Madeira Pl
Maidstone St
Malvern Rd
Margaret Ave
Mark Rd
Marlborough St
Marne Rd
Martin Ave
Maybeck Rd
McDonald St
McLean St
Minnie St
Monaghan Ave
Monmouth St
Morningside Dr
Mostyn St
Mountain View Rd
Mountfield Tce
Mt Albert Rd from
Carrington Rd to
Sandringham Rd
Mt Eden Rd from
New North Rd and
Symonds St to
Esplanade Rd
Mt Royal Ave
Myrtle St
New Bond St
New North Rd
from start (city end)
to Richardson &
Woodward Rds
Newcastle St
Newton Rd
Ngahura St | Niger St
Nikau St
Nixon St
Norgrove Ave
Norrie Ave
Northland St
Norwich St
Novar Pl
Nugent St
Oakfield Ave
Onslow Rd
Ophir St
Owairaka Ave
Paice Ave
Parkdale Rd
Parr Rd
Partridge St
Phyllis St
Pickens Cres
Pickett Ave
Pollen St from
Williamson Ave to
Great North Rd
Ponsonby Rd from
Karangahape &
Great North Rds to
Williamson Ave
Porters Ave
Potatau St
Prospect Tce
Prospero Ave
Punga St
Putiki St
Raetihi St
Raleigh St
Ranleigh Tce
Rawalpindi St
Reimers Ave
Rendall St
Renton Rd
Rhodes Ave
Rhyde St
Richardson Rd
Richbourne St
Rocky Nook Ave
Rossgrove Tce
Rossmay Tce
Royal Ave | Royal Tce
Ruarangi Rd
Ruru St
Sadgrove Tce
Sainsbury Rd
Sandringham Rd
from New North Rd
to Mt Albert Rd
Scanlan St
School Rd
Seaview Tce
Second Ave
Seddon St
Segar Ave
Selcourt Rd
Selkirk Rd
Severn St
Seychelles St
Shaddock St
Shaw St
Shorwell St
Springfield Rd
Springleigh Ave
St Benedicts St
St Lukes Rd
Stable Lane
Stillwell Rd
Suffolk St
Summit Dr
Sussex St from
Williamson Ave to
Great North Rd
Sutherland Rd
Sylvan Ave East
Sylvan Ave West
Symonds St from
New North Rd to
Alex Evans St
Takau St
Tanekahe St from
Paice Ave to King
Edward St
Tasman Ave
Taumata St
Taupata St
Tawari St
Taylors Rd
Thanet Ave | Third Ave
Thomas Ave
Tongariro St
Toroa St
Turakina St
Upper Queen St
Vaillima St
Valley Rd from
Dominion Rd to
Woodford and
Horoka Sts
Verona Ave
View Rd from
Esplanade Rd to
Horoka St
Vinter Tce
Violet St
Wagner Pl
Waima St
Wairere Ave
Walters Rd
Ward Tce
Warwick St
Watea Rd
Water St
Watson Ave
Wellgarth St
Wesley Ave
West St
Western Springs Rd
Weston Ave
Willcott St
Williamson Ave
Willis St
Wolseley St
Woodford Rd
Woodward Rd
Wynyard Rd |
|--|---|--|--|---|--|--|--|





CONTACT INFORMATION

26 Onslow Road, Kingsland, Auckland 1024

PHONE (09) 846 7534

EMAIL admin@kowhai.school.nz

WEBSITE www.kowhai.school.nz