

Teaching the Teachers — Mapping Workshop

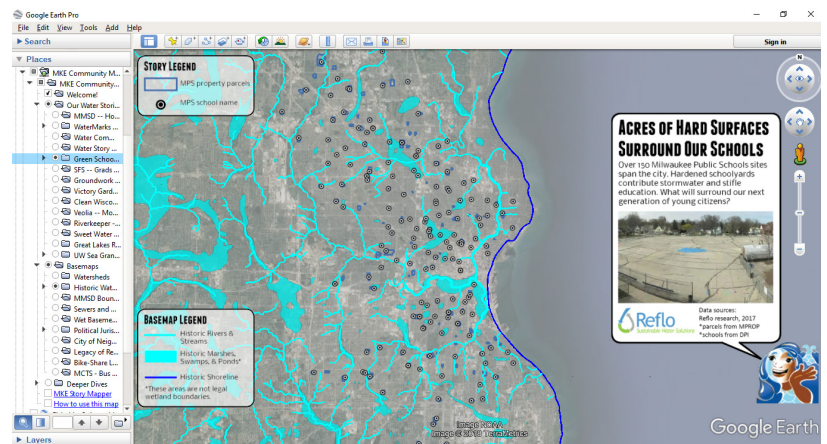
INTRO TO THE MILWAUKEE COMMUNITY MAP: TIPS & TRICKS TO EXPLORING GOOGLE EARTH

Limited to 12 participants per workshop — free but **RSVP to mtimm@refloh2o.com** required

Please join us for an interactive workshop on using the Milwaukee Community Map in Google Earth.

Google Earth is an amazing tool, but can be daunting to use. Consider this workshop if you would like to improve your confidence in using Google Earth to support your classroom activities, specifically related to local water.

Michael Timm, Reflo’s Milwaukee Water Stories manager, will lead the workshop. Together we will learn how to navigate and explore the many exciting aspects of the Milwaukee Community Map and identify curricular connections!



This workshop will be held twice: **Wednesday, Jan. 16, 2019 and Tuesday, Feb. 19 from 4:30 to 5:30 p.m. at Arts @ Large, 908 S. Fifth St.** Food and drink will be provided.

Participants should bring a laptop computer with Wi-Fi. *A mouse with scroll-wheel is strongly encouraged.

After the workshop, participants will be confident in performing the following tasks:

- ✓ Navigating and manipulating Google Earth
- ✓ Exploring and manipulating the Milwaukee Community Map
- ✓ Identifying easy ways to use Google Earth and the Milwaukee Community Map in your classroom

Participants will further be encouraged to share and discuss answers to the following questions:

- ✓ What are three specific ways I will use Google Earth to engage my students?
- ✓ What are three inquiry-driven questions or assignments I can pose to my students?
- ✓ What are three ways these tools can help me align meaningful activity with standards?