

THE NORTH

Adirondack Retreats Add New Facilities

Special to THE NEW YORK TIMES.
LAKE PLACID.—To add the finishing touch to vacationing here in the Adirondacks—a country of geographic and climatic contradictions in which yachts may approach to within hailing distance of the larger peaks and where ice skating and ski running are among midsummer pastimes—there will soon be "mountain climbing" via elevator.

Members of the Whiteface Mountain Highway Commission have announced that the new electric lift, which is to make it possible for all to enjoy the panoramic view from the summit of that mountain, will be ready for use on July 1.

Since opening of the Whiteface Mountain highway, on July 20, 1935, it has been necessary for those desirous of attaining the mountain's summit, 4,872 feet above the sea, to abandon their automobiles at the upper terminal of the highway, which extends 8.05 miles up the mountainside, and to climb about 800 feet up a steep pathway protected by stone walls and guard rails.

Installation of the elevator has been accomplished only after two years of work. Rock taken from the excavations for tunnel and shaft has been employed in construction of a small shelter house on the very summit of the mountain and in the building at the upper terminal of the highway of Whiteface "Castle," containing a restaurant, offices and other rooms.

Lake Placid's midsummer ice skating season has this year been moved up in the calendar of events and extended to seven weeks, June 25 to Aug. 15, inclusive. The seventh annual midsummer figure skating operetta, providing the highlight of the ice season, is to be held Aug. 4, 5 and 6.

Skiing on runs of pine needles has already found favor among members of the younger set in the village.

Taking advantage of early opening of the Lake Placid ice skating season at the Olympic arena, the Lake Placid Club will inaugurate its second annual figure skating camp for junior skaters also on June 25, keeping it in session until Aug. 15. Ice skating gymkhanas also are being arranged at the club.

Lake Placid's schedule of feature events for the season also includes the ninth annual horse show, to be held on Aug. 12, 13 and 14; the fourth annual flower show, Aug. 19, 20 and 21, and the third annual Lake Placid open golf tournament, Aug. 26, 27 and 28.

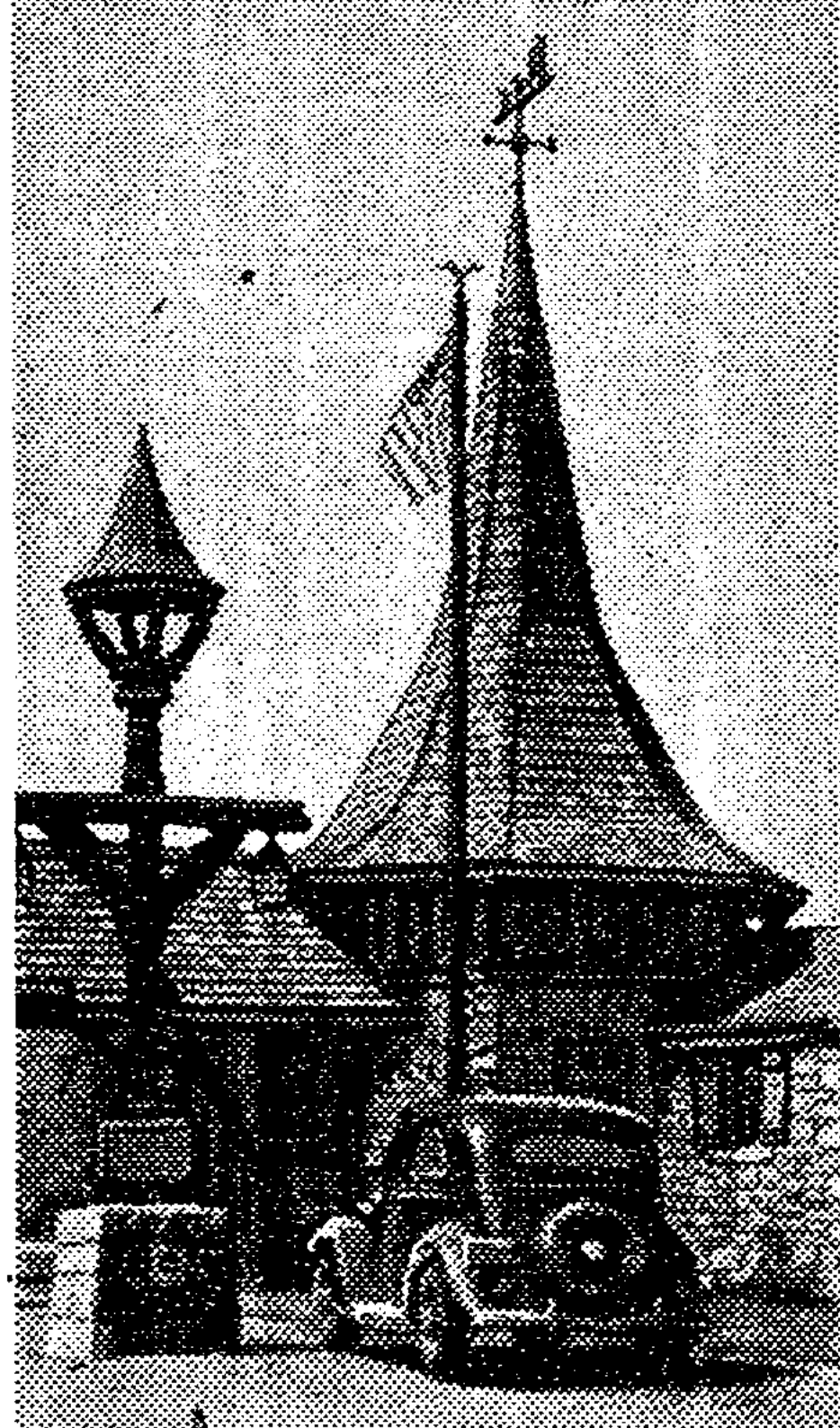
* * *

SEVERAL major tournaments will feature the golf schedule at Lake Placid Club, which will be inaugurated with the annual women's invitation golf tournament, June 30, July 1 and 2. From July 7 to 9 the third annual men's invitation tournament will be played at the club for the William Carpenter Trophy. Then, starting on Aug. 17 and continuing for three days, the annual club championships will be held.

Other golf features will be held throughout the region during the Summer, among them the annual championship for the Frank Lee Connable Trophy and the annual scratch tournament for the Harrington Mills Trophy, both included in the schedule of the Saranac Inn Country Club, to be played on the course at Saranac Inn; the third annual Champlain Valley tournament for a trophy presented by Edwin F. Mack of Chicago and the second annual Adirondack amateur tournament for a trophy offered by Mark Whitman at the Westport Inn Country Club, Westport-on-Lake Champlain; championship events sponsored by the Ausable Club and other championship events to be played on the Hotel Champlain course at Bluff Point on Lake Champlain. Among other golf events scheduled are those at Schroon Lake, Elizabethtown, Whiteface Inn, Port Kent and Loon Lake.

A senior invitation tennis tournament is to be held at the Lake Placid Club under sanction of the United States Lawn Tennis Association, July 18 to 23, and the tennis schedule also calls for a second tournament in mid-August.

August at the Lake Placid Club also will be featured by the annual charity fashion show, the costume ball and numerous parties in connection with Lake Placid's annual horse show.



View mountain from Nesmith

Toll house, Whiteface Memorial Highway, in the Adirondacks.

Six-week season at Lake Placid Club's Lakeside Theatre starting July 15. The Symphony Ensemble will return late this month, giving a series of concerts each week in the Agora Theatre, at the club. At the same time Dr. William Starr Myers of Princeton University will begin a series of weekly lectures on current economic and political questions. The Carl Lamson School of Music will again conduct a Summer session at the club.

* * *

UNUSUAL numbers of visitors will come to the Adirondacks this Summer as members of convention groups. Estimates from the office of Charles Goldsmith, manager of the convention bureau of the Chamber of Commerce of the village of Saranac Lake, place the total number likely to attend a series of conventions scheduled there at 5,250, divided as follows: June 29-July 2, New York State Police Conference, 1,000; July 10-13, United Spanish War Veterans, 1,450; July 14-16, New York State Moose Conclave, 1,000; July 26-28, New York State chiefs of police, 300; Aug. 16-19, New York State Firemen's Association, 1,200; on a date to be determined, New York State Sheriffs Association, 300.

Reservations for other large and important convention groups have been made at Saranac Inn on the Upper Saranac Lake.

The seventh annual invitation seaplane cruise, including a large group of private planes, with Rudolph R. Loening as commodore, will arrive at the Westport Inn anchorage, Westport-on-Lake Champlain, on a flight from Long Island on July 14, remaining through July 15, 16 and 17.

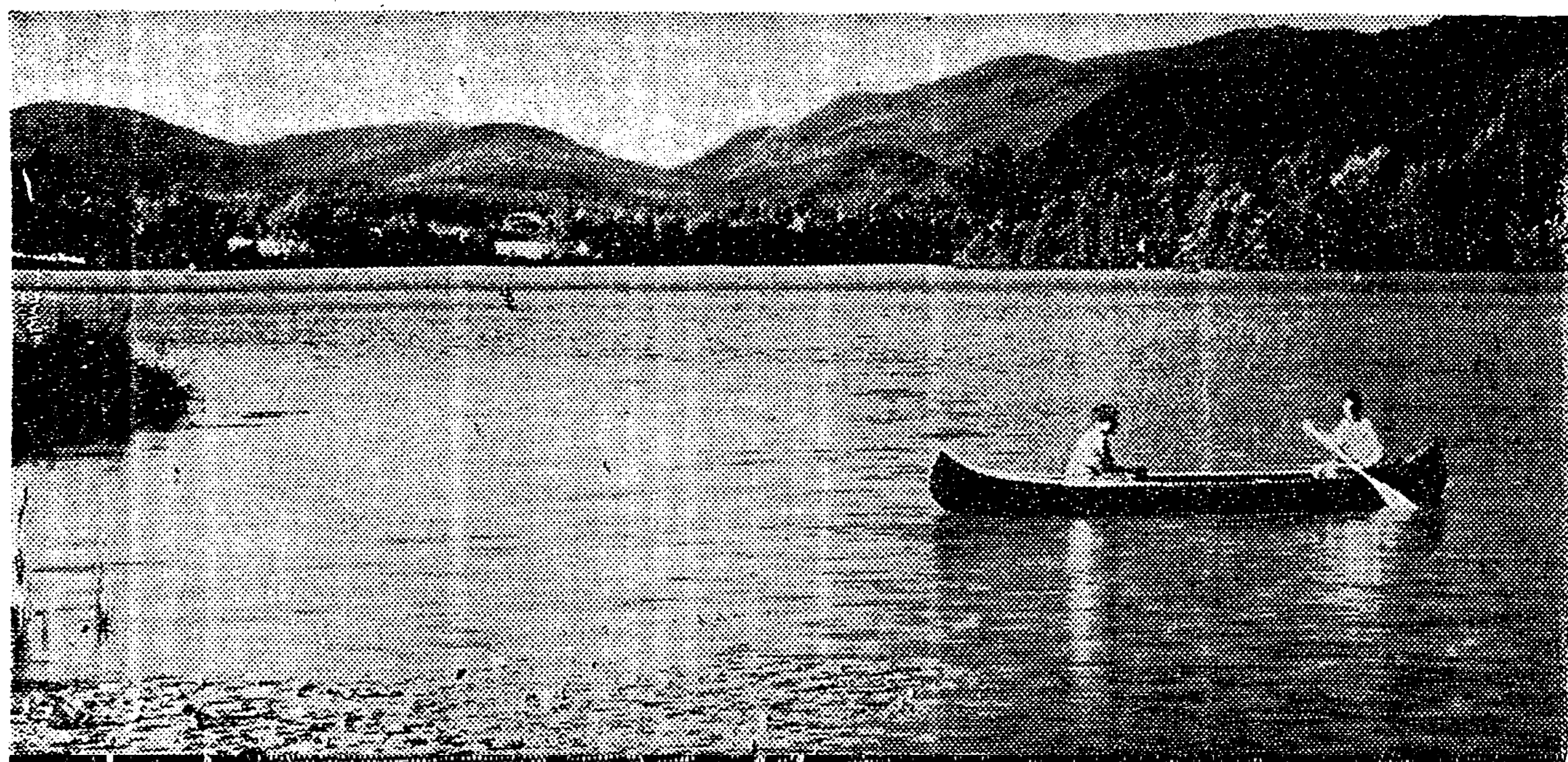
Among notable and permanent improvements in the Adirondack region this Summer is creation of a new lake in the village of Wilmington. The lake, about a quarter of a mile wide and two and one-half miles long, has been formed by building a concrete dam across the West Branch of the Ausable River. It has been christened Lake Everest.

Speed-boat racing on Schroon Lake, nine miles long and sometimes referred to as "the Lake Como of America," has received impetus through presentation of a trophy by Philip E. Rice, former president of both the New York State Hotel Association and the Adirondack Resorts Association. Camp owners on the lake are placing fast boats in commission this season.

Featuring the annual Saranac Inn invitation power-boat regatta will be competition in the free-for-all event for the trophy presented by Waler E. Frew of New York. Annual speed-boat races also will be held at Saranac Lake Village. There will be the usual sail race series on the Upper Saranac and the Upper St. Regis Lakes.

Among developments within the Adirondack region this season will be opening of Eagle Island, a beautiful twenty-five-acre estate on the Upper Saranac Lake, as a vacation camp for the Girl Scouts of Orange, East Orange, West Orange, South Orange and Maplewood, N. J.

Completion of work on Route 86 between the village of Saranac Lake and Saranac Inn and on the State Highway at Keene Center, connecting the new highway through Keene Valley with that reaching Lake Placid via the Cascade Lakes Pass, has provided motorists with a convenient and comparatively short approach to the heart of the mountains from the south. On the north also Route 86, from its junction at Upper Jay with Route 9N to the village of Wilmington, has been



Canoeing on a peaceful Summer afternoon at Lake Placid in the Adirondacks.