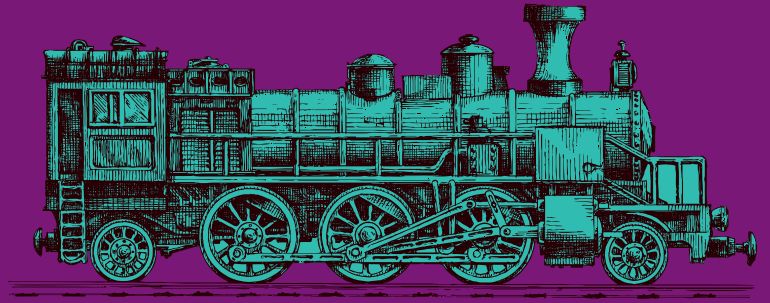


LOCOMOTIVE



Locomotive is a real tube bass overdrive featuring a 12AY7 tube, the same tube type used in the preamp of a tweed bass amp design conceived decades ago. With that amp in mind we designed the pedal with a wide gain range. From a massive clean boost to warm organic tube grind featuring excellent touch sensitivity and dynamic response with the organic compression of a classic tube amp. A clean control has been added to blend in your dry signal and preserve all bass frequencies while a low impedance output ensures that the pedal can also be used as a stand-alone preamp. Powered from a standard 9V DC supply with an internal voltage multiplier to deliver proper tube voltages.

Controls:

Gain: set the desired gain level of the tube driven circuit. From clean boost to pure tube grit.

Mean: set the output level of tube drive. Match to bypass level or boost your amp for extra drive and output.

Clean: blend in your dry signal and preserve low frequencies.

Tone: set the high frequencies response and dynamics. From smooth (CCW) to bright and aggressive (CW).

True Bypass: Locomotive features top quality relay-driven true bypass that will automatically go in bypass mode in the event of power supply failure.

We designed Locomotive with 12AY7 for optimum performance but you can replace the tube with any standard dual triode like 12AX7, 5751, 12AT7, 12AU7 for different flavor and overdrive/distortion characteristics.

You should also replace the tube if you experience loss of highs and lows, little or no output at all, microphonic whistling or squealing, or excessive noise. Tubes wear out with use and have to be changed accordingly.

To replace the tube:

- Disconnect power supply
- Unscrew and remove bottom plate
- Remove tube gently
- Replace only with 12AY7 or similar type (12AX7, 5751, 12AT7, 12AU7)

Built with the best components available, operates with external 9V DC regulated power supply (- center, + ring). Max current consumption 400 mA @ 9V DC. Using a power supply of +12V DC or more may cause severe damage to the pedal and void warranty.

Warranty: Locomotive comes with 5 years warranty. We will provide service/repair at no cost for all internal parts, within 5 years from date of manufacture - buyer is responsible for shipping costs. This warranty excludes the tube and damages done due to misuse or improper handling.

Contact info:

info@crazytubecircuits.com

Visit our website:

www.crazytubecircuits.com

