

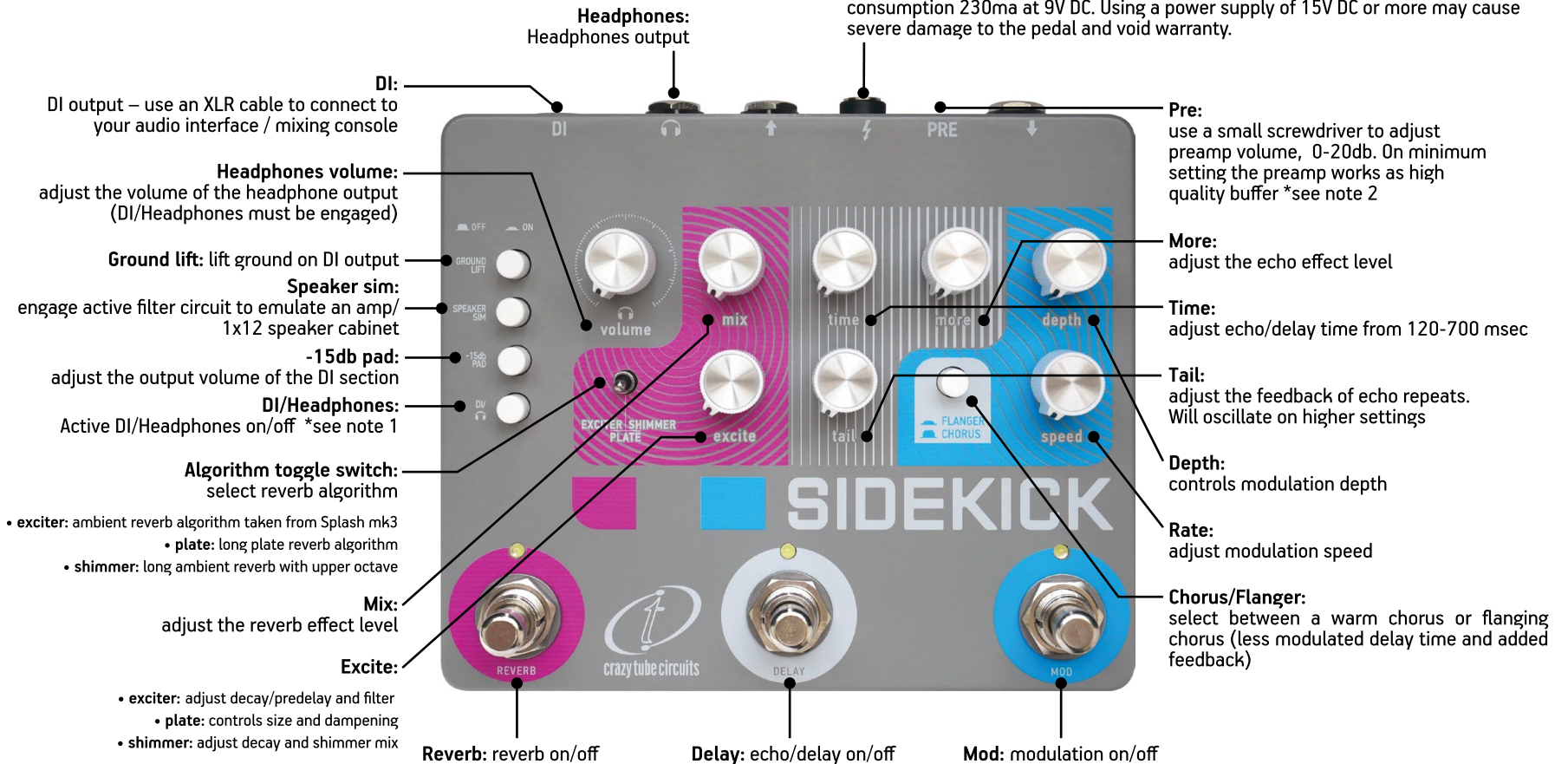


SIDEKICK

Sidekick combines the most common time based effects and creative tools in a compact design, ideal for any fly-rig or small board setup.

Starting with a fully analog, lush BBD chorus for 3-dimensional sounds that can be also switched for less modulated delay time and extra feedback creating a flanger like effect. A sweet but sparky echo/delay with a maximum delay time of 700ms adds organic repeats to your tone while 3 algorithms of spacious reverb (exciter – taken from Splash mk3, plate and shimmer) create the perfect ambience. You can use any of the effects on their own or combine them to create the soundscapes of your dreams. A switchable studio quality buffer/preamp taken from our Magnifier pedal ensures that all your precious tone will be kept unaltered through travels of long cables or enhance/boost your signal if needed (microphones, low output/piezo/acoustic instruments...). With the active DI and Headphones outputs with switchable amp/speaker simulation you can always have your personal in-ear monitor with you or silent practice late at night and at the same time connect to your audio interface/ mixing console.

DC:
Plug a 9-12V DC regulated/filtered power supply (- center, + ring). Max current consumption 230ma at 9V DC. Using a power supply of 15V DC or more may cause severe damage to the pedal and void warranty.

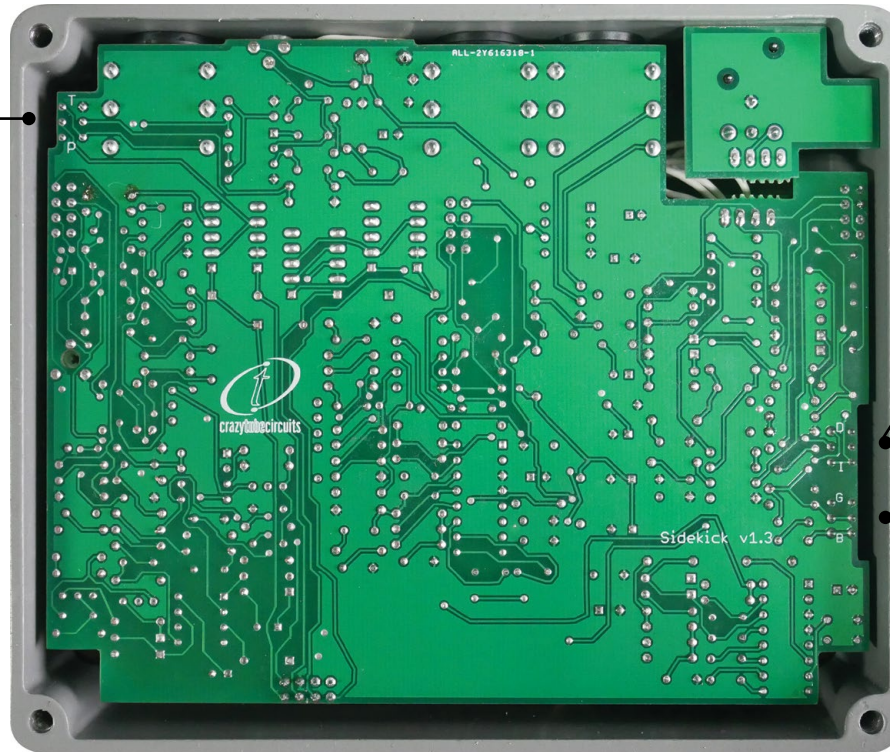


SIDEKICK

Note 1: when set in I position the active DI circuit is always on and speaker sim is always bypassed in the DI signal and only switchable on the headphones output

Note 2: preamp volume control is only active when internal switch is set in P position

Note 3: in order to have 100% true bypass, internal DI switch must be set in D position and external DI/headphones activation switch must be set in off position



T/P:

select between soft click relay **True** bypass of the effects or buffer/**Preamp** bypass via a studio grade circuit preamp* see notes 2, 3

D/I:

select between Dependent or Independent operation of the DI circuit from the DI/Headphones and Speaker Sim activation switches.

G/B:

adjust the frequency response of the speaker simulation circuit for **Guitar** or **Bass** guitar.

Warranty: Sidekick comes with 5 years warranty. We will provide service/repair at no cost for all internal parts, within 5 years from date of manufacture - buyer is responsible for shipping costs and taxes that may apply. This warranty excludes damages done due to misuse or improper handling.

Contact info:

info@crazytubecircuits.com

Visit our website:

www.crazytubecircuits.com

