

FOR IMMEDIATE RELEASE

**Media Contacts**

Terry Owens — (202) 763-8635, [terry.owens@dc.gov](mailto:terry.owens@dc.gov)

Michelle Phipps-Evans — (202) 497-0124, [michelle.phipps-evans@dc.gov](mailto:michelle.phipps-evans@dc.gov)

## **DDOT to Temporarily Close the ramp to Beach Drive, NW, from Klingle Road, NW, Beginning February 24**

*Lane closures in place while DDOT constructs the future Klingle Valley Trail*

**(Washington, DC)** – The District Department of Transportation (DDOT) will close the ramp to Beach Drive, NW, from Klingle Road, NW, beginning on Wednesday, February 24, 2016 at 7 am, weather permitting. This closure is expected to remain until May 2016.

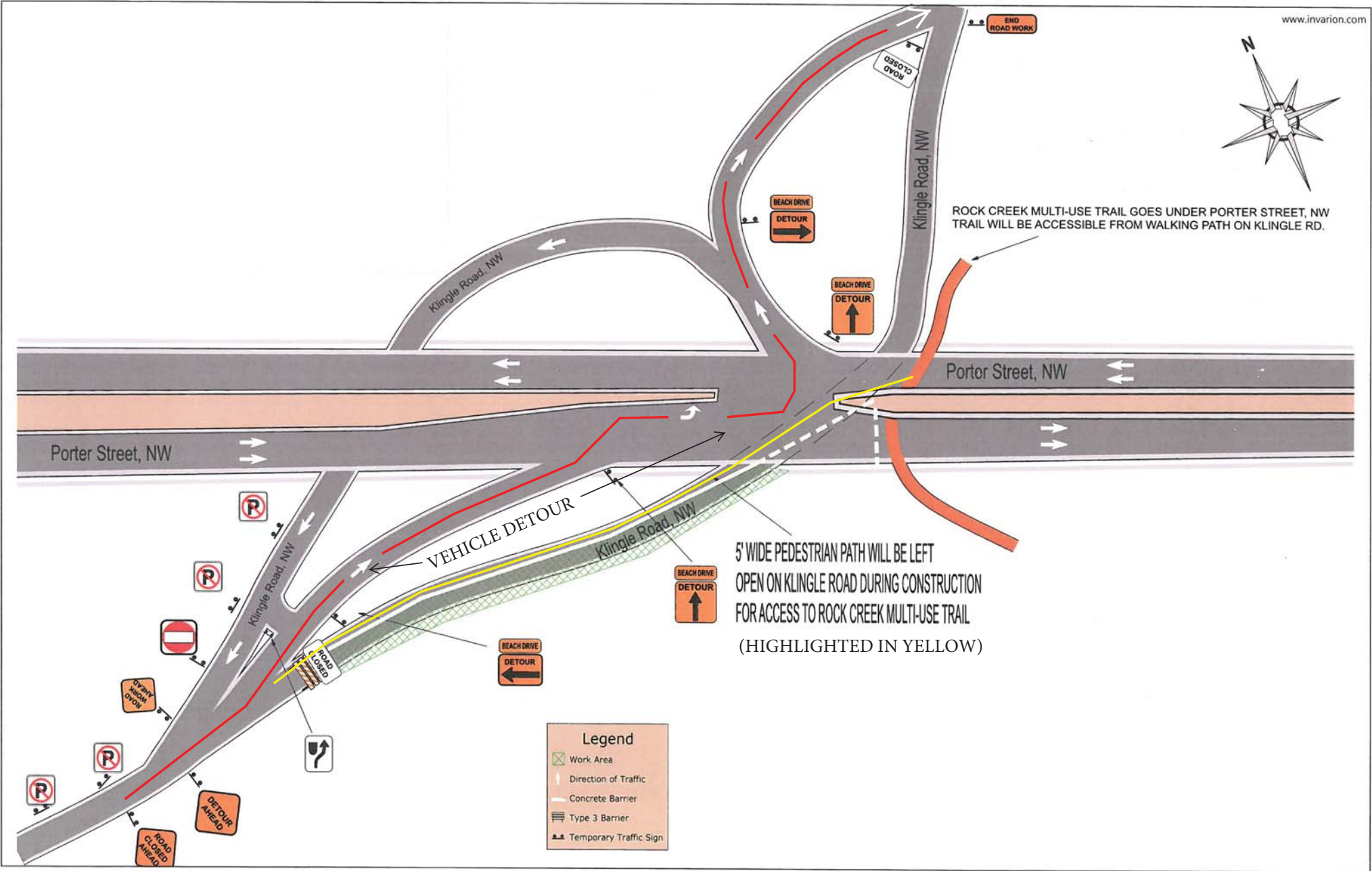
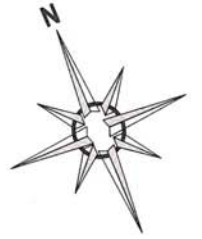
The ramp closure is needed for DDOT to safely construct the new Klingle Valley Trail along the ramp to Beach Drive, NW. The work includes water quality filtration systems, drainage pipe replacement, earthwork, curb and gutter replacement, paving, and guardrail installation.

Motorists who wish to access Beach Drive from Klingle Road should take the middle ramp up to Porter Street across to Beach Drive. A paved walking path will be maintained along the ramp to Beach Drive to allow pedestrian access to the Rock Creek Multi-Use Trail. Signage and protective barriers will also be used to maintain public safety.

Motorists should expect minor delays while using the detour to access Beach Drive from Klingle Road. Motorists, pedestrians and cyclists are urged to stay alert and to obey all construction signs.

###

*The mission of the District Department of Transportation (DDOT) is to enhance the quality of life for District residents and visitors by ensuring that people, goods, and information move efficiently and safely with minimal adverse impact on residents and the environment. Follow us on [Twitter](#) for transportation-related updates and more; like us on [Facebook](#) and visit the website at [www.ddot.dc.gov](http://www.ddot.dc.gov). Visit [goDCgo.com](http://goDCgo.com) for more information on transportation options in the District.*



ROCK CREEK MULTI-USE TRAIL GOES UNDER PORTER STREET, NW TRAIL WILL BE ACCESSIBLE FROM WALKING PATH ON KLINGLE RD.

5' WIDE PEDESTRIAN PATH WILL BE LEFT OPEN ON KLINGLE ROAD DURING CONSTRUCTION FOR ACCESS TO ROCK CREEK MULTI-USE TRAIL (HIGHLIGHTED IN YELLOW)

- Legend**
- Work Area
  - Direction of Traffic
  - Concrete Barrier
  - Type 3 Barrier
  - Temporary Traffic Sign